



### FEATURES:

- Suitable for RoHS reflow profile
- High current rating and low DCR
- Special lead wire design to prevent open circuit failure
- Excellent terminal strength to mechanical stress

### APPLICATIONS:

- OA equipments
- PC and notebook
- LCD TV set
- Power supply

### ELECTRICAL SPECIFICATIONS:

|                        |                                  |
|------------------------|----------------------------------|
| Abracon P/N:           | ASPI-0504 Series                 |
| Operating Temperature: | -40°C to +85°C                   |
| Storage Temperature:   | +5°C to +40°C (In Tape and Reel) |

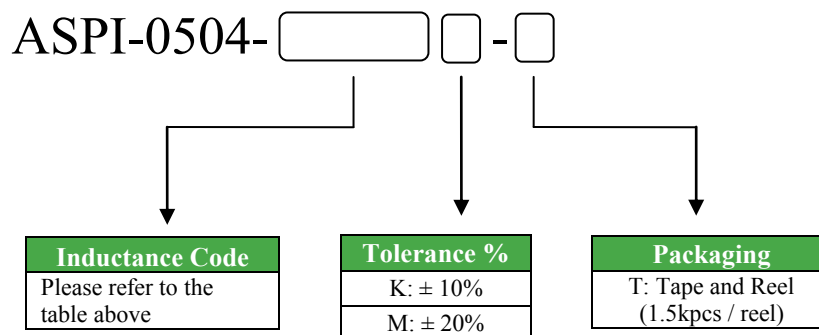
| PART NUMBER<br>ASPI-0504-<br>Inductance Code | Inductance (uH) | Test<br>Frequency | Tolerance | DCR (Ω) max | IDC (A) max |
|--|-----------------|-------------------|-----------|-------------|-------------|
| ASPI-0504-4R7                                | 4.7             | 7.96MHz           | K, M      | 0.04        | 3.50        |
| ASPI-0504-100                                | 10              | 2.52MHz           | K, M      | 0.10        | 1.44        |
| ASPI-0504-120                                | 12              | 2.52MHz           | K, M      | 0.12        | 1.40        |
| ASPI-0504-150                                | 15              | 2.52MHz           | K, M      | 0.14        | 1.30        |
| ASPI-0504-180                                | 18              | 2.52MHz           | K, M      | 0.15        | 1.23        |
| ASPI-0504-220                                | 22              | 2.52MHz           | K, M      | 0.18        | 1.11        |
| ASPI-0504-270                                | 27              | 2.52MHz           | K, M      | 0.20        | 0.97        |
| ASPI-0504-330                                | 33              | 2.52MHz           | K, M      | 0.23        | 0.88        |
| ASPI-0504-390                                | 39              | 2.52MHz           | K, M      | 0.32        | 0.80        |
| ASPI-0504-470                                | 47              | 2.52MHz           | K, M      | 0.37        | 0.72        |
| ASPI-0504-560                                | 56              | 2.52MHz           | K         | 0.42        | 0.68        |
| ASPI-0504-680                                | 68              | 2.52MHz           | K         | 0.46        | 0.61        |
| ASPI-0504-820                                | 82              | 2.52MHz           | K         | 0.60        | 0.58        |
| ASPI-0504-101                                | 100             | 1KHz              | K         | 0.70        | 0.52        |
| ASPI-0504-121                                | 120             | 1KHz              | K         | 0.93        | 0.48        |
| ASPI-0504-151                                | 150             | 1KHz              | K         | 1.10        | 0.40        |
| ASPI-0504-181                                | 180             | 1KHz              | K         | 1.38        | 0.38        |
| ASPI-0504-221                                | 220             | 1KHz              | K         | 1.57        | 0.35        |
| ASPI-0504-102                                | 1000            | 1KHz              | M         | 14.4        | 0.15        |

### Test Conditions

**Inductance:** 100kHz

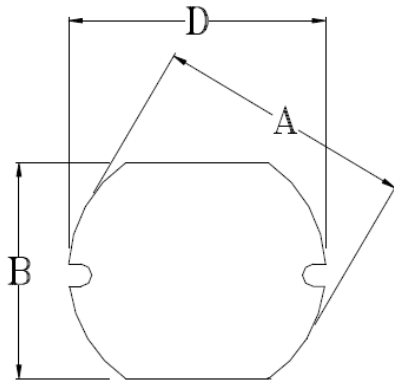
**Isat:**  $\Delta L/L$  (initial)  $\geq$  -10% or  $\Delta T=40^\circ\text{C}$  ( $T_a=20^\circ\text{C}$ ), whichever is lower.

### OPTIONS AND PART IDENTIFICATION

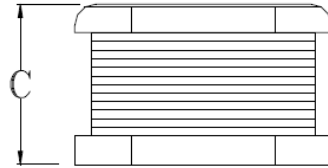




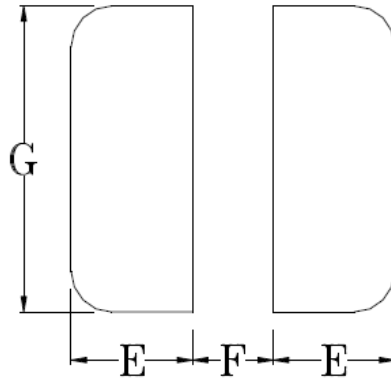
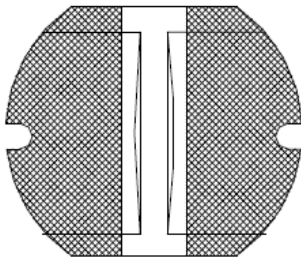
## OUTLINE DRAWING:



| A       | B       | C        | D       | E    | F    | G    |
|---------|---------|----------|---------|------|------|------|
| 5.8±0.3 | 5.2±0.3 | 4.5±0.35 | 5.8±0.3 | 1.80 | 1.90 | 5.00 |

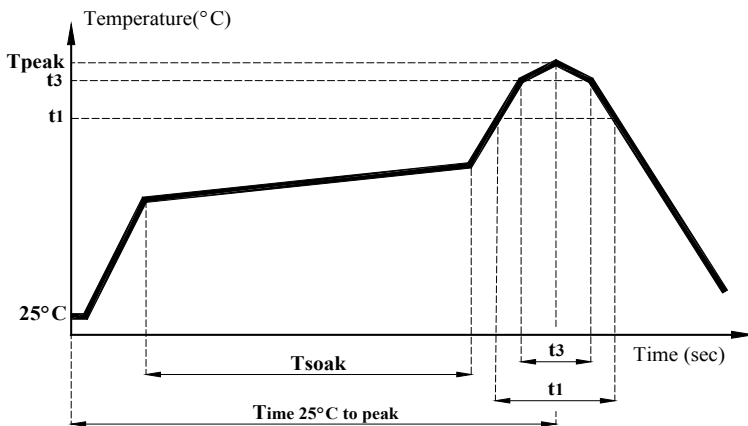


### Recommended Land Pattern



Dimension: mm

## REFLOW PROFILE:

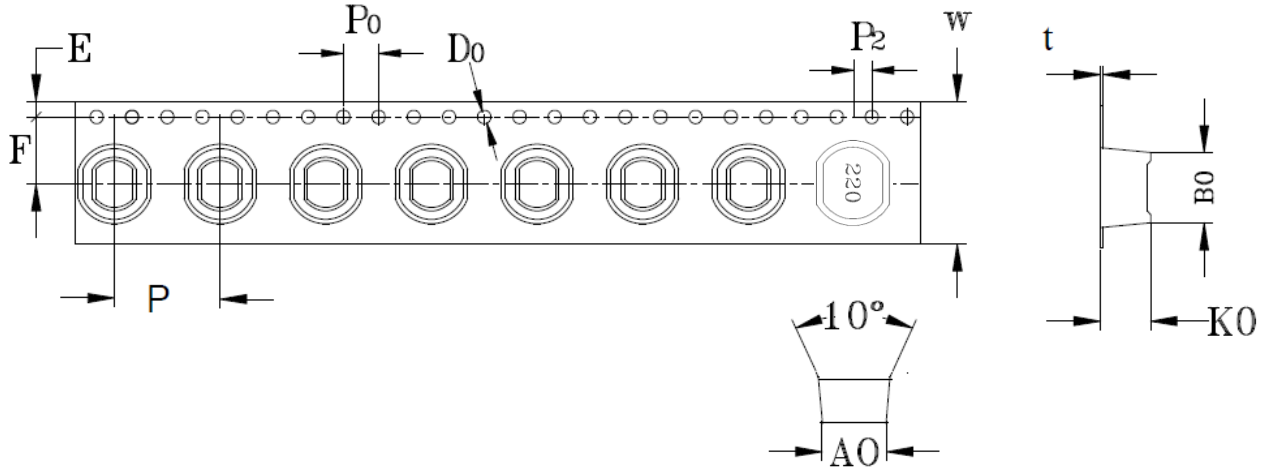


| Item                                       | mark  |                    |
|--|-------|--------------------|
| Temperature rise gradient                  |       | 3°C/sec (max)      |
| Heating time                               | Tsoak | 50s ~ 150s         |
| Heating temperature                        |       | 120°C~180°C        |
| Time over 217°C                            | t1    | 70 sec             |
| Time within 5°C of actual peak temperature | t3    | 10~30 sec          |
| Peak temperature                           | Tpeak | 250 ( +0 / -5 °C ) |
| Time 25°C to peak Temperature              |       | 6 minutes max.     |

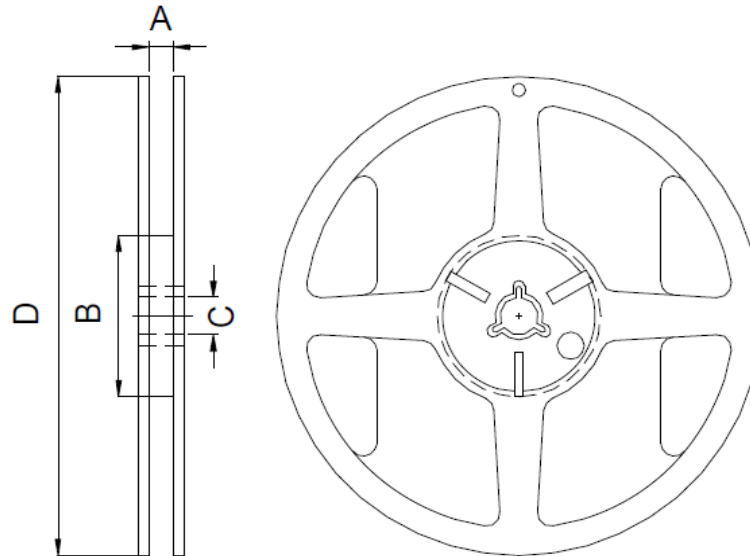


## TAPE & REEL:

T: 1,500pcs / reel



| A0        | B0        | K0        | F         | E          | W        | P       | Po      | P2      | t          |
|-----------|-----------|-----------|-----------|------------|----------|---------|---------|---------|------------|
| 5.4 ± 0.1 | 6.0 ± 0.1 | 4.8 ± 0.1 | 5.5 ± 0.1 | 1.75 ± 0.1 | 12 ± 0.3 | 8 ± 0.1 | 4 ± 0.1 | 2 ± 0.1 | 0.4 ± 0.05 |



| A          | B         | C          | D         |
|------------|-----------|------------|-----------|
| 12.5 ± 0.2 | 100 ± 0.5 | 13.2 ± 0.3 | 330 ± 1.0 |

Dimension: mm

**ATTENTION** Abracon Corporation's products are COTS – Commercial-Off-The-Shelf products; suitable for Commercial, Industrial and, where designated, Automotive Applications. Abracon's products are not specifically designed for Military, Aviation, Aerospace, Life-dependant Medical applications or any application requiring high reliability where component failure could result in loss of life and/or property. For applications requiring high reliability and/or presenting an extreme operating environment, written consent and authorization from Abracon Corporation is required. Please contact Abracon Corporation for more information.

## X-ON Electronics

Largest Supplier of Electrical and Electronic Components

*Click to view similar products for [Gate Drivers](#) category:*

*Click to view products by [ABRACON](#) manufacturer:*

Other Similar products are found below :

[00028](#) [00053P0231](#) [8967380000](#) [56956](#) [CR7E-30DB-3.96E\(72\)](#) [57.404.7355.5](#) [LT4936](#) [57.904.0755.0](#) [5801-0903](#) [5803-0901](#) [5811-0902](#)  
[5813-0901](#) [58410](#) [00576P0030](#) [00581P0070](#) [5882900001](#) [00103P0020](#) [00600P0005](#) [00-9050-LRPP](#) [00-9090-RDPP](#) [5951900000](#) [01-](#)  
[1003W-10/32-15](#) [LTI LA6E-1S-WH-RC-FN12VXCR1](#) [0131700000](#) [00-2240](#) [LTP70N06](#) [LVP640](#) [0158-624-00](#) [5J0-1000LG-SIL](#) [020017-13](#)  
[LY1D-2-5S-AC120](#) [LY2-0-US-AC120](#) [LY2-US-AC240](#) [LY3-UA-DC24](#) [00-5150](#) [00576P0020](#) [00600P0010](#) [LZNQ2M-US-DC5](#) [LZNQ2-](#)  
[US-DC12](#) [LZP40N10](#) [00-8196-RDPP](#) [00-8274-RDPP](#) [00-8275-RDNP](#) [00-8609-RDPP](#) [00-8722-RDPP](#) [00-8728-WHPP](#) [00-8869-RDPP](#) [00-](#)  
[9051-RDPP](#) [00-9091-LRPP](#) [00-9291-RDPP](#)