

Precision SMD VCTCXO

AST3TDA-0000-T

Request Samples



Check Inventory



ESD Sensitive



7.0 x 5.0 x 2.2 mm

RoHS/RoHS II Compliant

MSL Level = 3

Features

- High stability over industrial temperature range: -40°C to +85°C @ ±280ppb
- HCMOS output
- Voltage-control Functionality

Applications

- Stratum 3
- Network routers and switches
- COTS Military Radios & other Communication Hardware
- Wireless Communication
- GPS Tracking with Hold-Over Accuracy
- Test & Measurement Equipment
- Autonomous Technologies

Maximum Ratings

Parameters	Notes
Storage Temperature Range	-55 to +105°C
Supply Voltage	-0.5 to 6V
Control Voltage	0 to 3.3V
ESD, HBM/CDM/MM	4kV/2kV/200V/400V

Electrical Specifications

Parameters	Min.	Typ.	Max.	Units	Notes
Frequency	38.40			MHz	
Output Waveform	HCMOS				
Operating Temperature	-40		+85	°C	
Storage Temperature	-55		+105	°C	
Frequency Stability over Operating Temperature Range ^[Note 1]	-0.28		+0.28	ppm	
Frequency Stability vs. Supply Voltage Change (V _{dd} ±5%)	-0.1		+0.1	ppm	V _{cc} =3.3V±/-5%, V _c =1.65V
Aging	-1		+1	ppm	First year
	-3		+3	ppm	10 years
Supply Voltage (V _{dd})	3.13	3.3	3.45	V	
Supply Current (I _{cc})			15	mA	@ 25°C, V _{cc} =3.3V, O _{Load} = 10pF
Start-up Time		2	3	s	
Control Port					
Control Voltage Range (V _c)	0		3.3	V	
Center Control Voltage (V _c)		1.65		V	
Modulation Bandwidth		6		kHz	3dB BW
Absolute Pulling Range (APR) ^[Note 2]	-5		+5	ppm	

Note 1: T_A varied from -40°C to 85°C, measurement referenced to frequency observed with f_{ref}=(f_{max}+f_{min})/2, V_{cc}= 3.3V, V_c=1.65V, temperature variable speed less than 2°C/min.

Note 2: Sufficient range to correct for initial calibration, 15years aging, temperature, voltage, and load variation



5101 Hidden Creek Ln Spicewood TX 78669
 Phone: 512-371-6159 | Fax: 512-351-8858
 For terms and conditions of sales, please visit:
www.abracon.com

REVISED: 03-14-22

ABRACON IS
 ISO9001-2015
 CERTIFIED

Precision SMD VCTCXO

AST3TDA-0000-T

Request Samples



Check Inventory



ESD Sensitive

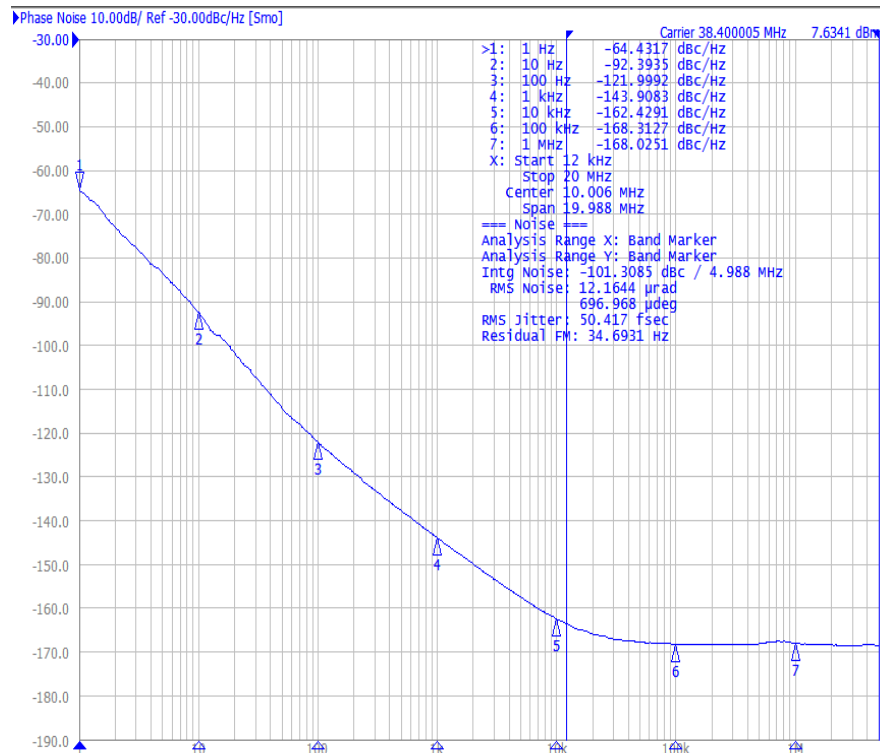


7.0 x 5.0 x 2.2 mm
RoHS/RoHS II Compliant
MSL Level = 3

Electrical Specifications *continued*

Parameters	Min.	Typ.	Max.	Units	Notes
Tuning Slope	Positive				
Linearity			10	%	
Port Impedance	10			kΩ	
Phase Noise (@25°C):		-93	-85	dBc/Hz	Offset @10Hz
		-122	-115		Offset @100Hz
		-144	-139		Offset @1kHz
		-163	-155		Offset @10kHz
		-167	-162		Offset @100kHz
		-167	-165		Offset @1MHz
Phase Jitter		70	100	fs	12kHz to 20MHz
V _{OH}	2.97			V	V _{cc} =3.3V, O _{load} =10 pF
V _{OL}			0.4	V	V _{cc} =3.3V, O _{load} =10 pF
Output Load		10		pF	
Duty Cycle	45	50	55	%	@50%
Rise / Fall Time (10%~90%)			10	ns	@25°C

Typical Phase Noise Characteristics (@ 25°C ± 3°C)



5101 Hidden Creek Ln Spicewood TX 78669
Phone: 512-371-6159 | Fax: 512-351-8858
For terms and conditions of sales, please visit:
www.abracon.com

REVISED: 03-14-22

ABRACON IS
ISO9001-2015
CERTIFIED

Precision SMD VCTCXO

AST3TDA-0000-T

Request Samples



Check Inventory

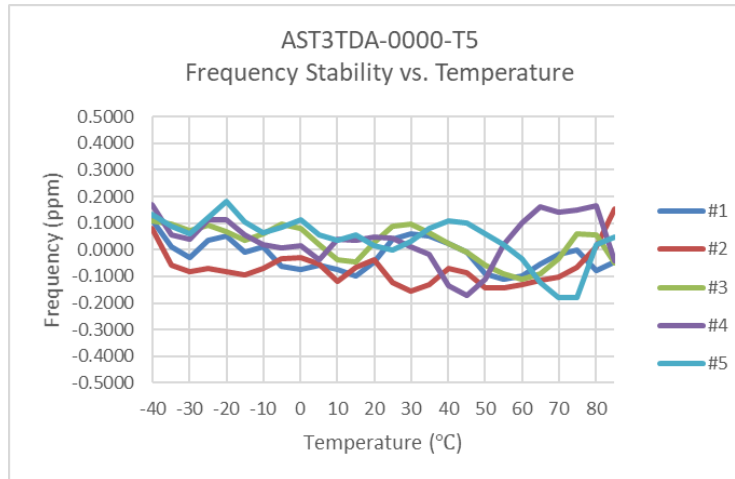


ESD Sensitive

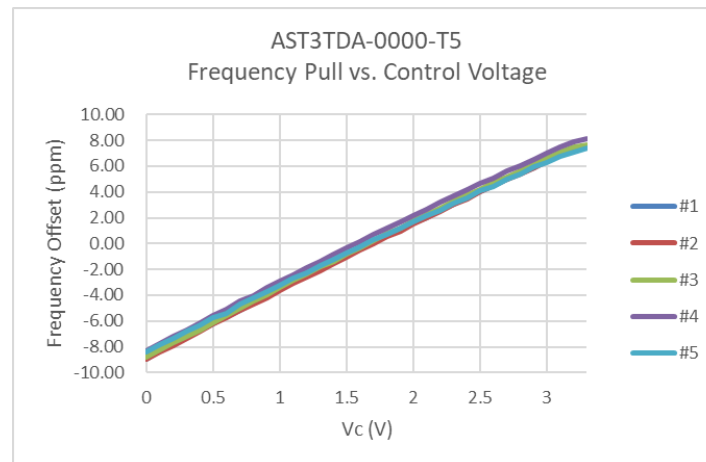


7.0 x 5.0 x 2.2 mm
RoHS/RoHS II Compliant
MSL Level = 3

Frequency vs. Temperature Characteristics

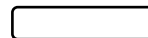


Frequency Pull vs. Control Voltage (VCTXCO)



Part Identification

AST3TDA - 0000 -



Packaging
Blank: Bulk
T5: 500pcs/reel



5101 Hidden Creek Ln Spicewood TX 78669
Phone: 512-371-6159 | Fax: 512-351-8858
For terms and conditions of sales, please visit:
www.abracon.com

REVISED: 03-14-22

ABRACON IS
ISO9001-2015
CERTIFIED

Precision SMD VCTCXO

AST3TDA-0000-T

Request Samples



Check Inventory

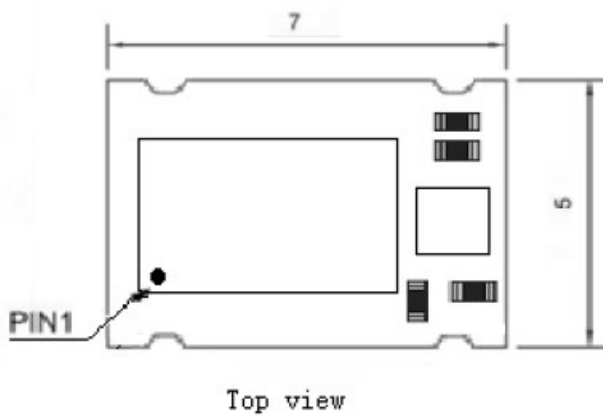
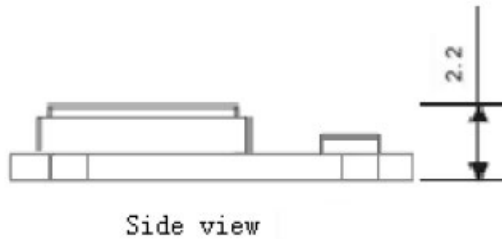
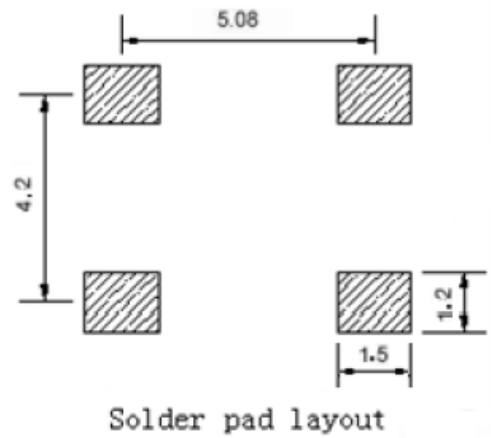
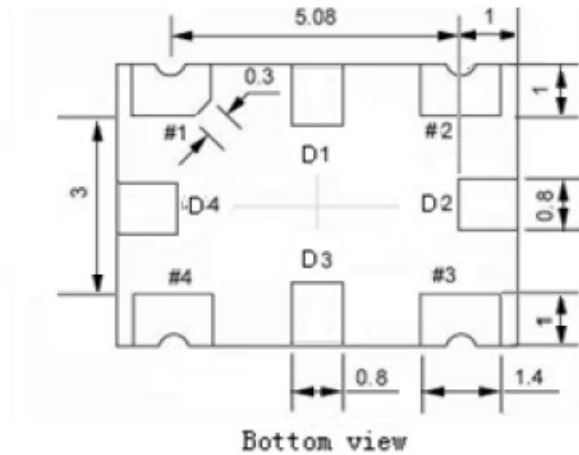


ESD Sensitive



7.0 x 5.0 x 2.2 mm
RoHS/RoHS II Compliant
MSL Level = 3

Mechanical Dimensions



Pin #	Function
D1, D2, D3, D4	No connect
1	Voltage control
2	GND
3	Output
4	Vdd

Dimensions:
Tolerance ± 0.2 mm

inches

[mm]

Precision SMD VCTCXO

AST3TDA-0000-T

Request Samples



Check Inventory

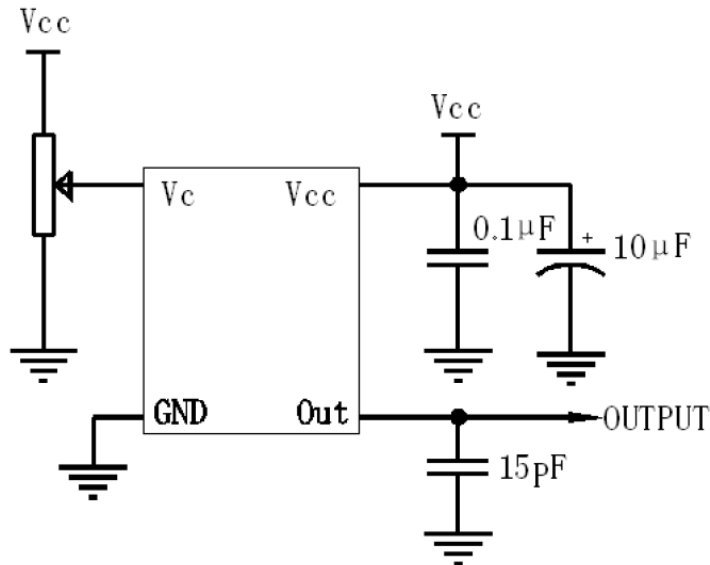


ESD Sensitive



7.0 x 5.0 x 2.2 mm
RoHS/RoHS II Compliant
MSL Level = 3

Test Circuit



Precision SMD VCTCXO

AST3TDA-0000-T

Request Samples



Check Inventory



ESD Sensitive



7.0 x 5.0 x 2.2 mm
RoHS/RoHS II Compliant
MSL Level = 3

Reflow Profile [JEDEC J-STD-020]

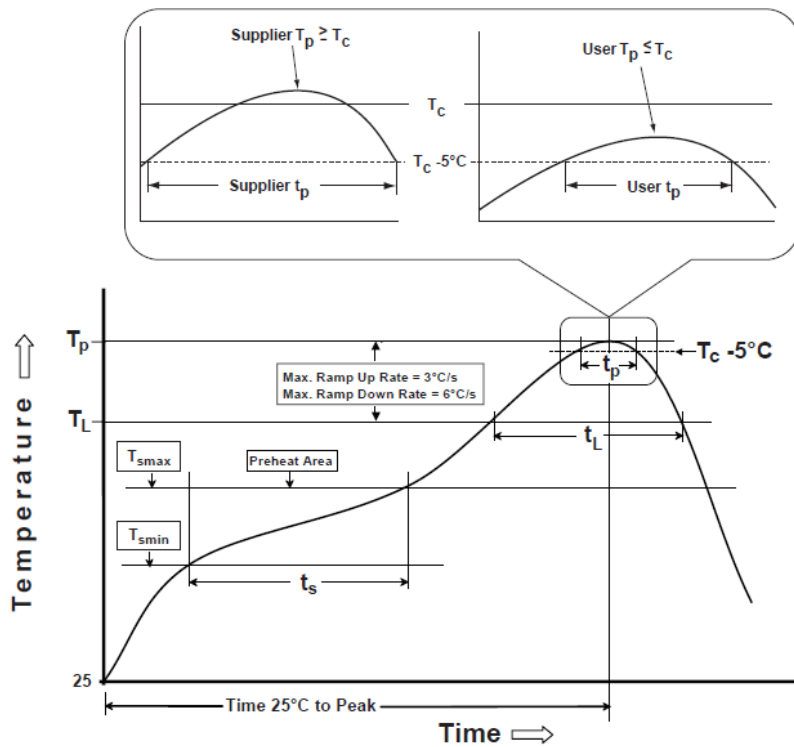


Table 1

SnPb Eutectic Process Classification Temperatures (T_c)		
Package Thickness	Volume mm ³ <350	Volume mm ³ ≥350
<2.5 mm	235 °C	220 °C
≥2.5 mm	220 °C	220 °C

Table 2

Pb-Free Process Classification Temperatures (T_c)			
Package Thickness	Volume mm ³ <350	Volume mm ³ 350-2000	Volume mm ³ >2000
<1.6 mm	260 °C	260 °C	260 °C
1.6 mm - 2.5 mm	260 °C	250 °C	245 °C
>2.5 mm	250 °C	245 °C	245 °C

Profile Feature	Sn-Pb Eutectic Assembly	Pb-Free Assembly
Preheat / soak		
Temperature minimum (T_{smin})	100°C	150°C
Temperature maximum (T_{smax})	150°C	200°C
Time (T_{smin} to T_{smax}) (t_s)	60 - 120 sec.	60 - 120 sec.
Average ramp-up rate (T_{smax} to T_p)	3°C/sec. max	3°C/sec. max
Liquidous temperature (T_L)	183°C	217°C
Time at liquidous (t_L)	60 - 150 sec.	60 - 150 sec.
Peak package body temperature (T_p)*	see Table 1	see Table 2
Time (t_p)** within 5°C of the specified classification temperature (T_c)	20 sec.	30 sec.
Ramp-down rate (T_p to T_{smax})	6°C/sec. max	6°C/sec. max
Time 25°C to peak temperature	6 min. max	8 min. max
Reflow cycles	2 max	2 max

*Tolerance for peak profile temperature (T_p) is defined as a supplier minimum and a user maximum.

**Tolerance for time at peak profile temperature (t_p) is defined as supplier minimum and a user maximum.

Precision SMD VCTCXO

AST3TDA-0000-T

Request Samples



Check Inventory



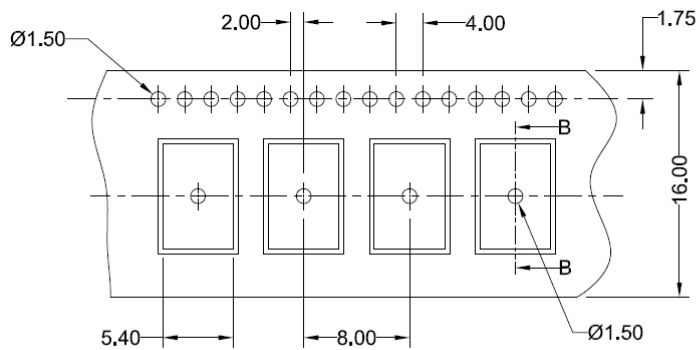
ESD Sensitive



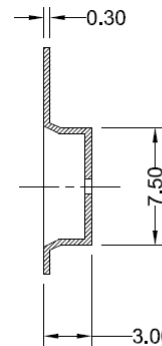
7.0 x 5.0 x 2.2 mm
RoHS/RoHS II Compliant
MSL Level = 3

Packaging

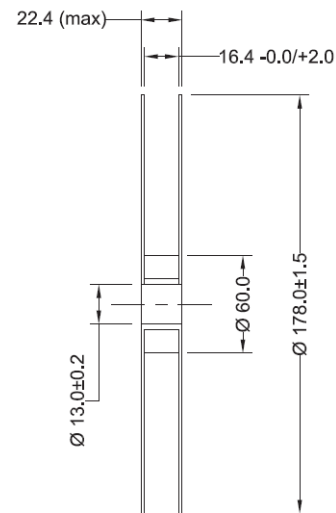
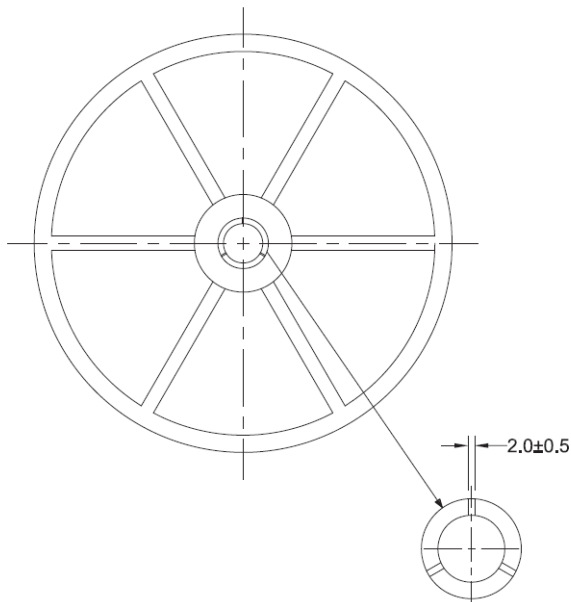
T5:500pcs/reel



FEEDING (PULL) DIRECTION



SECTION B - B



Dimensions: mm

ATTENTION: Abracon LLC's products are COTS – Commercial-Off-The-Shelf products; suitable for Commercial, Industrial and, where designated, Automotive Applications. Abracon's products are not specifically designed for Military, Aviation, Aerospace, Life-dependent Medical applications or any application requiring high reliability where component failure could result in loss of life and/or property. For applications requiring high reliability and/or presenting an extreme operating environment, written consent and authorization from Abracon LLC is required. Please contact Abracon LLC for more information.



5101 Hidden Creek Ln Spicewood TX 78669
Phone: 512-371-6159 | Fax: 512-351-8858
For terms and conditions of sales, please visit:
www.abracon.com

REVISED: 03-14-22

ABRACON IS
ISO9001-2015
CERTIFIED

X-ON Electronics

Largest Supplier of Electrical and Electronic Components

Click to view similar products for [TCXO Oscillators](#) category:

Click to view products by [Abracon](#) manufacturer:

Other Similar products are found below :

[SiT5000AI-3D-33E0-10.000000X](#) [FOX923CH-19.20M](#) [TG-5006CG-12H 26.0000M3](#) [THD3031035LK280005-10.0M](#) [SIT5000ACC8E-33VQ-19.200000X](#) [SiT5001AI-2E-33N0-48.000000X](#) [TG3225CEN 25.0000M-KFGNNAB](#) [TG2016SMN 38.4000M-MCGNNM3](#) [TG2016SMN 48.0000M-MCGNNM3](#) [TG2016SMN 19.2000M-ECGNNM3](#) [TG2016SMN 26.0000M-ECGNNM3](#) [SIT1566AC-JV-18E-32.768E](#) [AST3TDATAACJ5-10.0000MHz](#) [AST3TDATAACJ5-20.0000MHz](#) [AST3TDA53TACJ2-19.2000MHz](#) [AST3TDA53TACJ2-38.8800MHz](#) [AST3TDATAACJ5-19.2000MHz](#) [AST3TDATAACJ5-38.8800MHz](#) [SiT5155AI-FK-33E0-10.000000F](#) [NT0503CC3I287EN10](#) [NT0503CH3I287CN25](#) [NT0503CH3I287CN30.72](#) [NT0503CC3I287DN20](#) [TG-3541CE 32.7680KXB0](#) [ECS-TXO-2016MV-320-TR](#) [TG2520SMN 38.4000M-MCGNNM3](#) [ECS-TXO-2016MV-120-TR](#) [CVT32-10.000](#) [KT7050A10000KAW33TAD](#) [LFTCXO063716BULK](#) [7Z-26.000MDG-T](#) [7Z-26.000MBG-T](#) [LFTCXO075797](#) [SIT5356AI-FQ-33E0-25.000000X](#) [SIT5356AI-FQ-33VT-10.000000X](#) [SIT5356AI-FQ-33VT-20.000000X](#) [SIT5357AI-FQ-33N0-100.000000X](#) [DS32KHZSN+T&R](#) [LFPTXO000316Bulk](#) [SiT5000AICGE-33E0-25.000000X](#) [SiT1568AI-JE-DCC-32.768E](#) [SiT1552AC-JE-DCC-32.768D](#) [LFPTXO000068Bulk](#) [LFPTXO000244Bulk](#) [LFPTXO000291Bulk](#) [LFPTXO000268Bulk](#) [ABDFTCXO-20.000MHz-L-2-CT](#) [LFTCXO077226Cutt](#) [LFTCXO077227Cutt](#) [LFTCXO077231Cutt](#)