

# MMC-463F-32.768kHz-T

- Plastic SMD Crystal
- 32.768 kHz
- RoHS Compliant

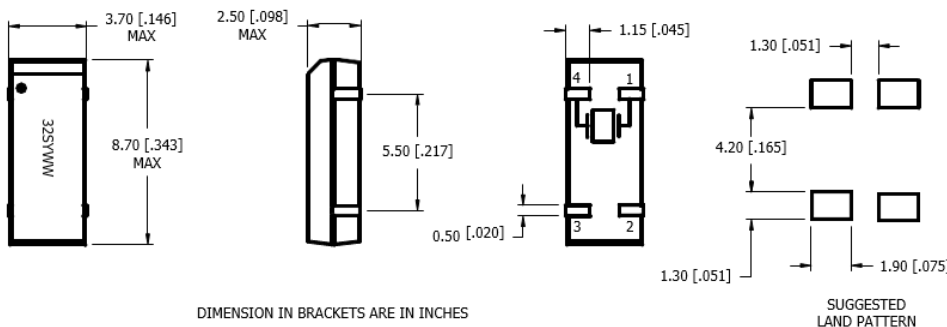


Frequency	32.768 kHz
Tolerance at +25°C	±20 ppm
Stability	Parabolic Coefficient -0.04 max ppm/(Δ°C) <sup>2</sup> max
Operating Temperature	-40°C to +85°C
Storage Temperature	-55°C to +125°C
Equivalent Series Resistance	50 kΩ max
Load Capacitance	12.5 pF ±0.5 pF
Shunt Capacitance	1.3 pF typical
Motional Capacitance	2.7 fF typical
Drive Level	1 μW max
Aging (first year)	±3 ppm max at +25°C ±3°C
Mode of Operation	Tuning Fork, X-Cut
Insulation Resistance	500 MΩ min at 100 VDC

## Mechanical & Environmental Detail

Shock	MIL-STD-883, Meth 2002, Cond B
Solderability	MIL-STD-883, Meth 2003
Vibration	MIL-STD-883, Meth 2007, Cond A
Moisture Sensitivity Level	Level 2 per JEDEC J-STD-020
Reflow Solderability	260°C, 10 secs max

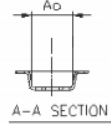
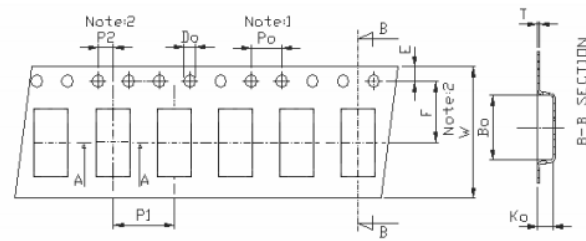
## Mechanical Details



PIN CONNECTIONS	
PIN 1	CRYSTAL
PIN 2	GROUND
PIN 3	GROUND
PIN 4	CRYSTAL

### Tape & Reel Dimensions

Quantity per Reel: 3000 Units



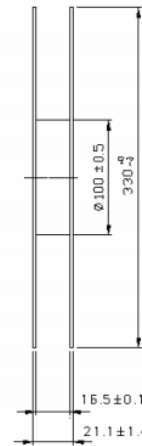
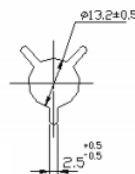
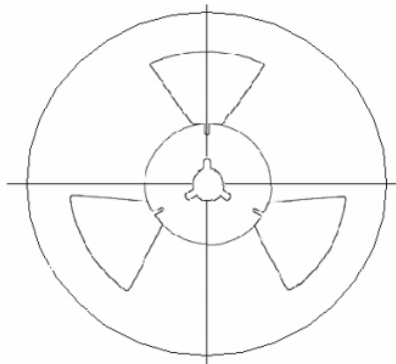
$A_o = 3.10 \pm 0.10$  mm  
 $B_o = 9.80 \pm 0.10$  mm  
 $K_o = 2.70 \pm 0.10$  mm

Unit: mm

Symbol	Spec.
K1	-
Po	4.00 ± 0.10
P1	8.00 ± 0.10
P2	2.00 ± 0.10
Do	1.50 <sup>+0.1</sup> / <sub>0</sub>
E	1.75 ± 0.10
F	7.50 ± 0.10
10Po	40.0 ± 0.10
W	16.0 ± 0.30
T	0.30 ± 0.05

Notice:

1. 10 Sprocket hole pitch cumulative tolerance is ±0.10 mm
2. Pocket position relative to sprocket hole measured as true position of pocket not pocket hole.
3. Ao & Bo measured on a plane 0.3mm above the bottom of the pocket to top surface of the carrier.
4. Ko measured from a plane on the inside bottom of the pocket to the top surface of the carrier.
5. Carrier camber shall be not than 1mm per 100mm through a length of 250mm.



Unit: mm

## X-ON Electronics

Largest Supplier of Electrical and Electronic Components

*Click to view similar products for [Crystals](#) category:*

*Click to view products by [Abracon](#) manufacturer:*

Other Similar products are found below :

[CX3225GB25000M0PPSZ1](#) [718-13.2-1](#) [MC405 32.0000K-R3:PURE SN](#) [7A-40.000MAAE-T](#) [FL2000085](#) [99-BU](#) [9B-15.360MBBK-B](#) [9C-7.680MBBK-T](#) [H10S-12.000-18-EXT-TR](#) [ABC2-6.000MHZ-D4Z-T](#) [ABLS-20.000MHZ-D2-T](#) [ABS071-32.768KHZ-6-T](#) [R38-32.768-12.5-5PPM-NPB](#) [BTD1062E05A-513](#) [21U15A-21.4MHZ](#) [RTX-781DF1-S-20.950](#) [LFXTAL066198Cutt](#) [9C-14.31818MBBK-T](#) [A-11.000MHZ-27](#) [ABL-27.000MHZ-B4Y-T](#) [ABM11-132-24.000MHZ-T3](#) [ABM3B1-25.000MHZ-D2Y-T](#) [SPT2A-.032768B](#) [SPT2A.032768G](#) [SSPT7F-9PF20-R](#) [LFXTAL065253Cutt](#) [LFXTAL066431Cutt](#) [XT9S20ANA14M7456](#) [XT9SNLANA16M](#) [7A-24.576MBBK-T](#) [7B-30.000MBBK-T](#) [MMCC2R32.7680KHZ](#) [7A-14.31818MBBK-T](#) [6504-202-1501](#) [6526-202-1501](#) [ABLS-12.000MHZ-B2Y-T](#) [7A-10.000MBBK-T](#) [SG636PCE-20.000MC](#) [3404](#) [E1SAA18-25.000M TR](#) [CM315D32768EZFT](#) [C1E-24.000-7-2020-R](#) [C1E-19.200-12-1530-X-R](#) [C1E-16.000-12-1530-X-R](#) [ABM11-16.000MHZ-9-B1U-T](#) [FL5000014](#) [EUCA18-3.1872M](#) [FX0800015](#) [425F35E027M0000](#) [FP0800018](#)