

### 4G/LTE Band On Glass Antenna

---

- **4G/LTE**
- **On glass mount**
- **2 ~ 2,5 dBi Gain**

ADA-0068-LTE is an on glass 690-2700MHz antenna with SMA connector, 2.5 m RG174 low loss cable as standard.



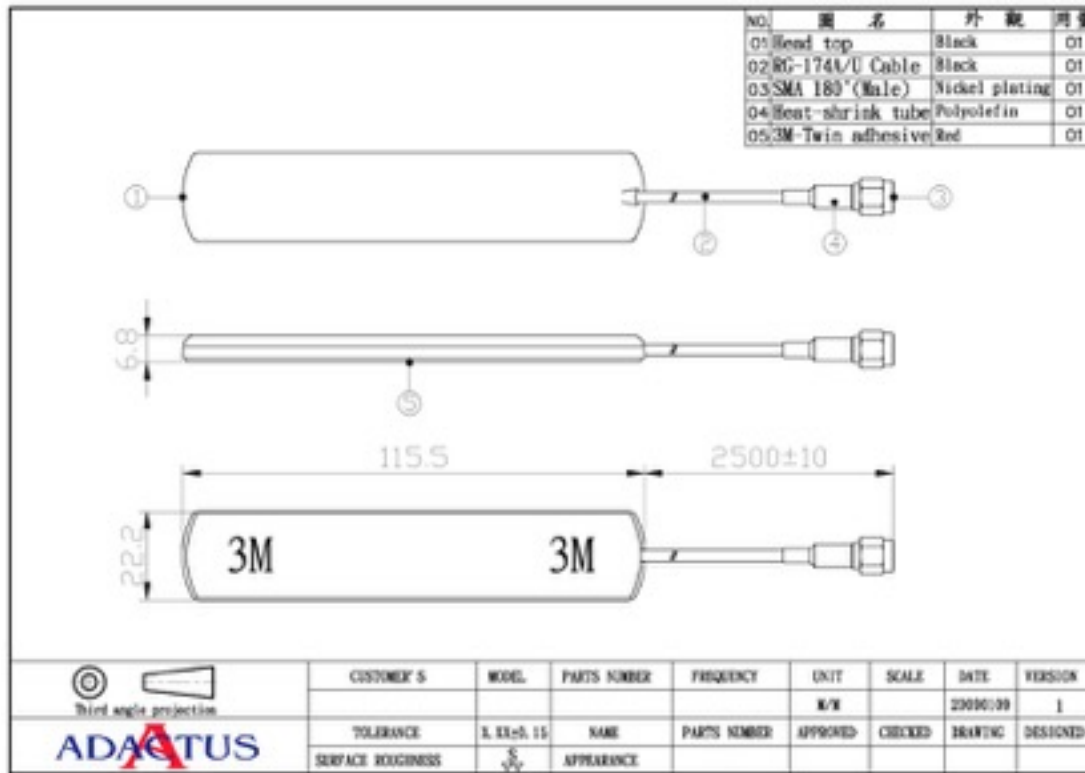
**RoHS**

Optimal position for automobile applications is on the inside of the windshield of the vehicle. Be certain to avoid coverage by metal objects in heated windshields, for optimal performance.

## Specification

Antenna	Specification
Frequency Bands	690-960/1710-2170/2400-2700MHz
Frequency	690-2700 MHz
Polarization	Vertical
V.S.W.R	<2.0:1
Impedance	50Ω
Gain	2~2,5 dBi
Return Loss	
	Environmental Conditions
Operating Temperature	-40°C ~ + 70°C
Storage Temperature	-40°C ~ + 80°C
Relative Humidity	40% to 95%
	Mechanical Specification
Antenna Material	TPE
Antenna Color	Black
Cable	RG174 low loss, 2.5m
Connector	SMA (M)
Size	115 x 22 x 7mm
Weight	125g Max.
Mounting	Adhesive Tape

## Mechanical Dimension



## Ordering codes

TYPE	Description	Comment
ADA-0068-LTE	On Glass Antenna	4G/LTE on Glass Antenna

**Disclaimer**

Information furnished is believed to be accurate and reliable. However, Adactus assumes no responsibility for the consequences of use of such information nor for any infringement of patents or other rights of third parties which may result from its use. Adactus reserves the right to make changes without further notice to any product herein to improve reliability, function or design. Adactus does not assume any liability arising out of the application or use of any product described herein.

This publication supersedes and replaces all information previously supplied. Adactus products are not authorised as critical components in life support devices or systems.

## **X-ON Electronics**

Largest Supplier of Electrical and Electronic Components

*Click to view similar products for [Adactus manufacturer](#):*

Other Similar products are found below :

[ADA-A720-S](#) [ADA-A101-S](#) [ADA-0169W-LTE](#) [ADA-0068LTE](#) [ADA 0169](#) [ADA-25252](#) [ADA 0186 433](#) [ADA-0186QU](#) [ADA-0186-868](#)