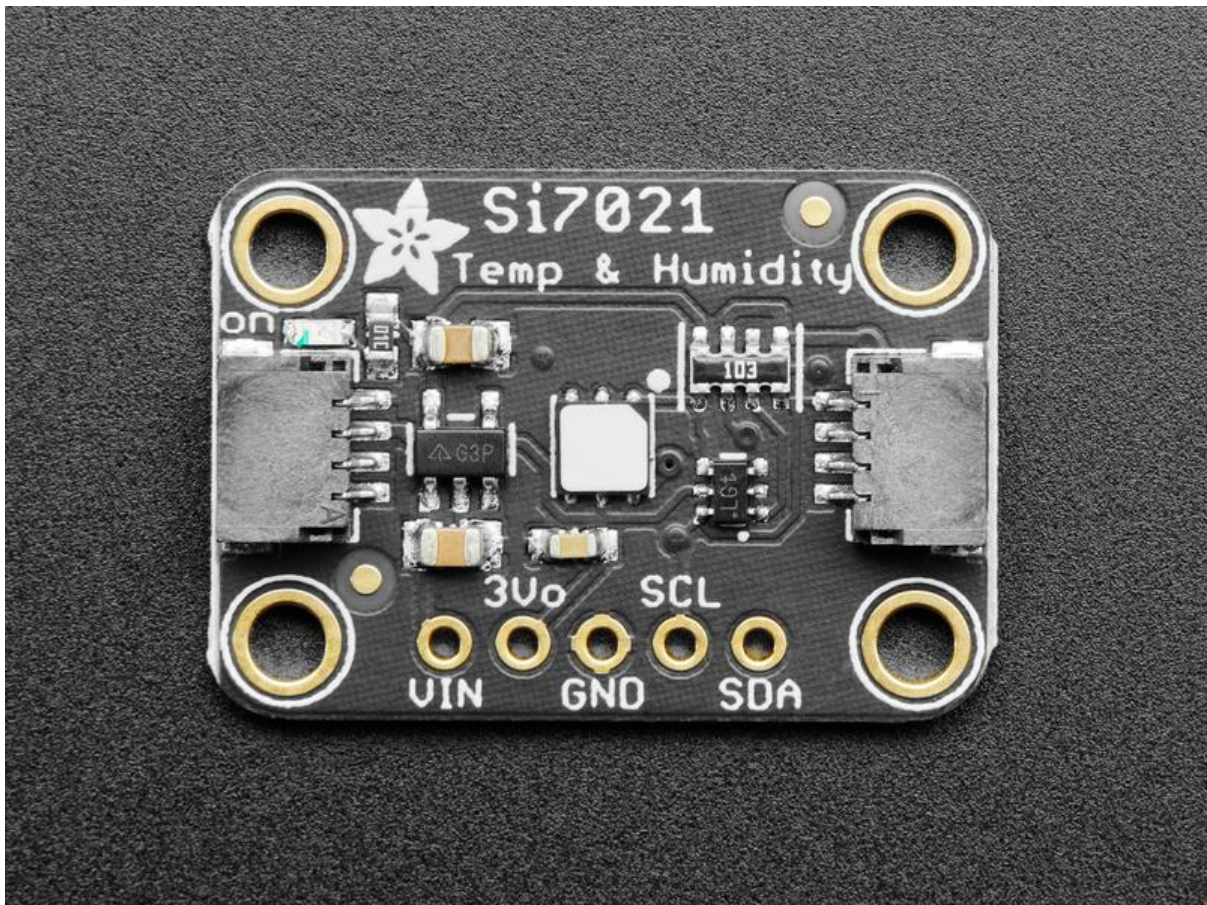




# Adafruit Si7021 Temperature + Humidity Sensor

Created by lady ada



<https://learn.adafruit.com/adafruit-si7021-temperature-plus-humidity-sensor>

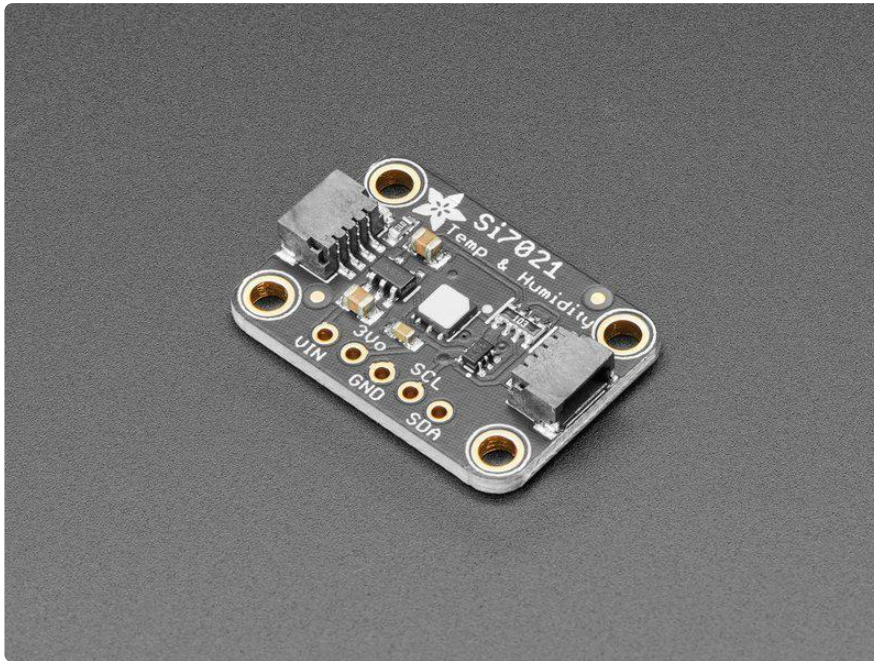
Last updated on 2021-11-15 06:47:29 PM EST

# Table of Contents

Overview	3
Pinouts	5
• Power Pins:	6
• I2C Logic pins:	7
Assembly	7
• Prepare the header strip:	7
• Add the breakout board:	8
• And Solder!	8
Arduino Code	9
• Install Adafruit_Si7021 library	11
• Load Demo	12
• Library Reference	13
Python & CircuitPython	14
• CircuitPython Microcontroller Wiring	14
• Python Computer Wiring	15
• CircuitPython Installation of Si7021 Library	16
• Python Installation of Si7021 Library	17
• CircuitPython & Python Usage	18
• Full Example Code	18
Python Library Docs	19
Downloads	19
• Files & Datasheets	19
• Schematic and Fabrication Print STEMMA QT Version	19
• Schematic and Fabrication Print Original Version	20

---

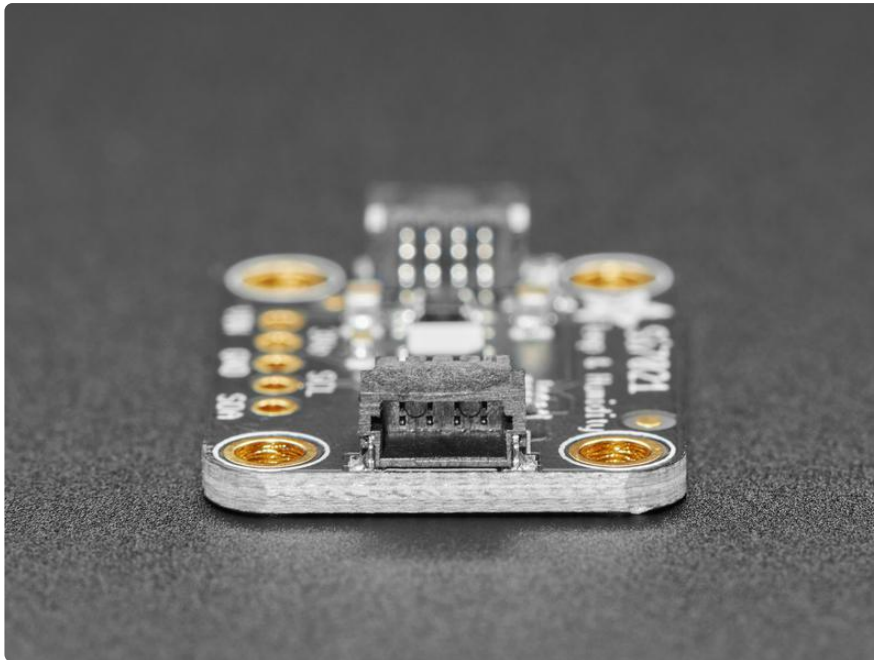
# Overview



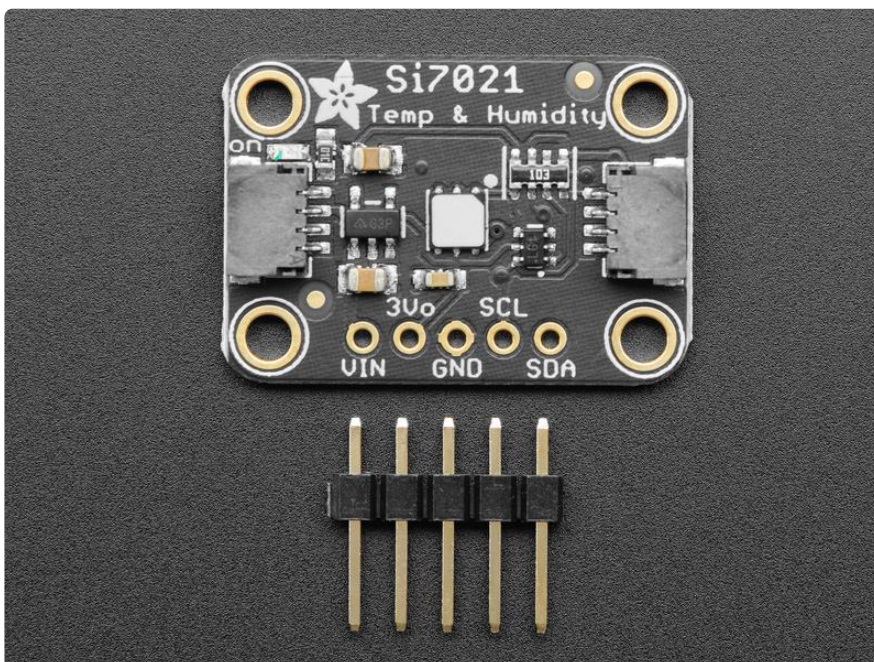
It's summer and you're sweating and your hair's all frizzy and all you really want to know is why the weatherman said this morning that today's relative humidity would max out at a perfectly reasonable 42% when it feels more like 77%. Enter the Si7021 Temperature + Humidity Sensor - the best way to prove the weatherman wrong!

This lovely sensor for Silicon labs has  $\pm 3\%$  relative humidity measurements with a range of 0–80% RH, and  $\pm 0.4\text{ }^\circ\text{C}$  temperature accuracy at a range of -10 to +85  $^\circ\text{C}$ . Great for all of your environmental sensing projects. It uses I2C for data transfer so it works with a wide range of microcontrollers.



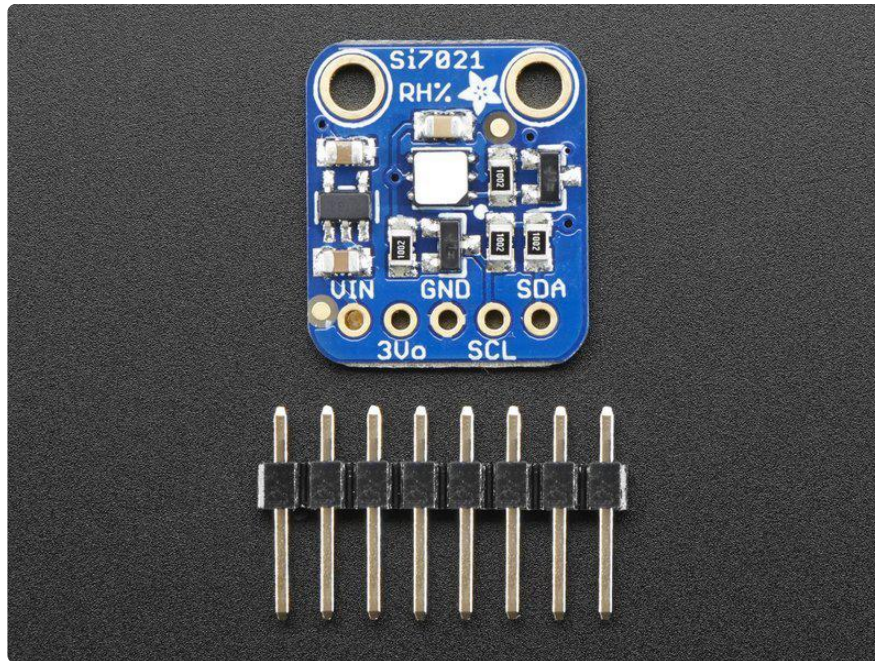


To get you going fast, we spun up a custom made PCB in the [STEMMA QT form factor](https://adafru.it/LBQ) (<https://adafru.it/LBQ>), making them easy to interface with. The [STEMMA QT connectors](https://adafru.it/JqB) (<https://adafru.it/JqB>) on either side are compatible with the [SparkFun Qwiic](https://adafru.it/Fpw) (<https://adafru.it/Fpw>) I2C connectors. This allows you to make solderless connections between your development board and the LIS331s or to chain them with a wide range of other sensors and accessories using a [compatible cable](https://adafru.it/JnB) (<https://adafru.it/JnB>). We've of course broken out all the pins to standard headers and added a voltage regulator and level shifting so allow you to use it with either 3.3V or 5V systems such as the Raspberry Pi + Feather series or Arduino Uno respectively.



There's a PTFE filter to keep the sensor clean, that's the white flat thing on top. Also comes with some pin header. Some light soldering is required to attach the header for use in a breadboard but it's easy to do.

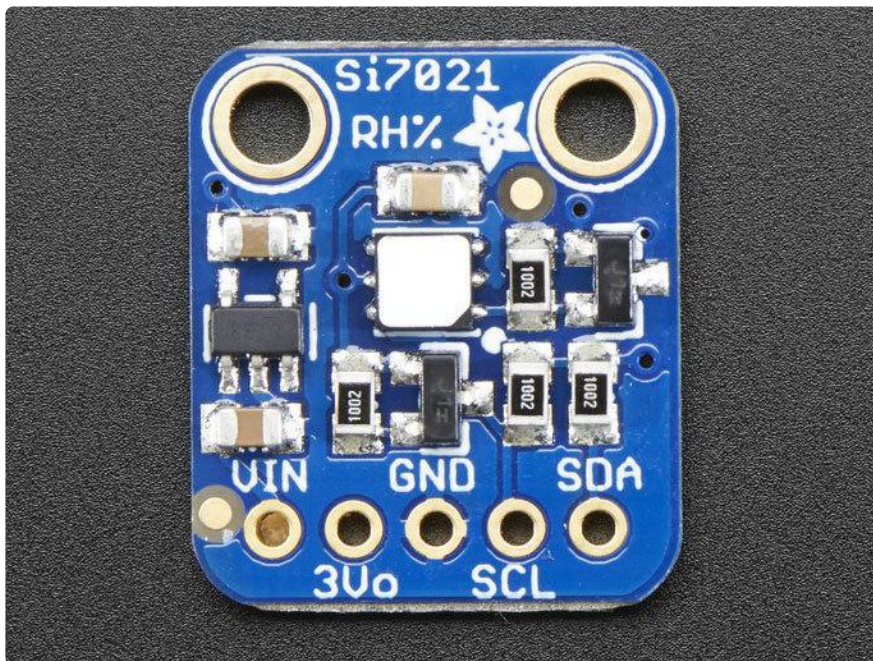
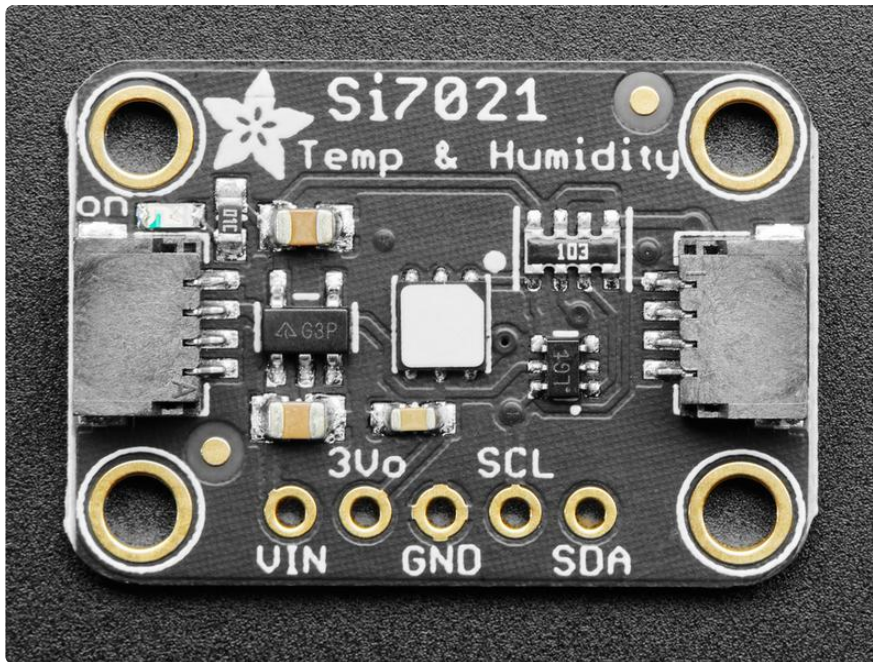
There are two versions of this board - the STEMMA QT version shown above, and the original header-only version shown below. Code works the same on both!



## Pinouts

The Si7021 is a I2C sensor. That means it uses the two I2C data/clock wires available on most microcontrollers, and can share those pins with other sensors as long as they don't have an address collision. For future reference, the I2C address is 0x40 and you can't change it!





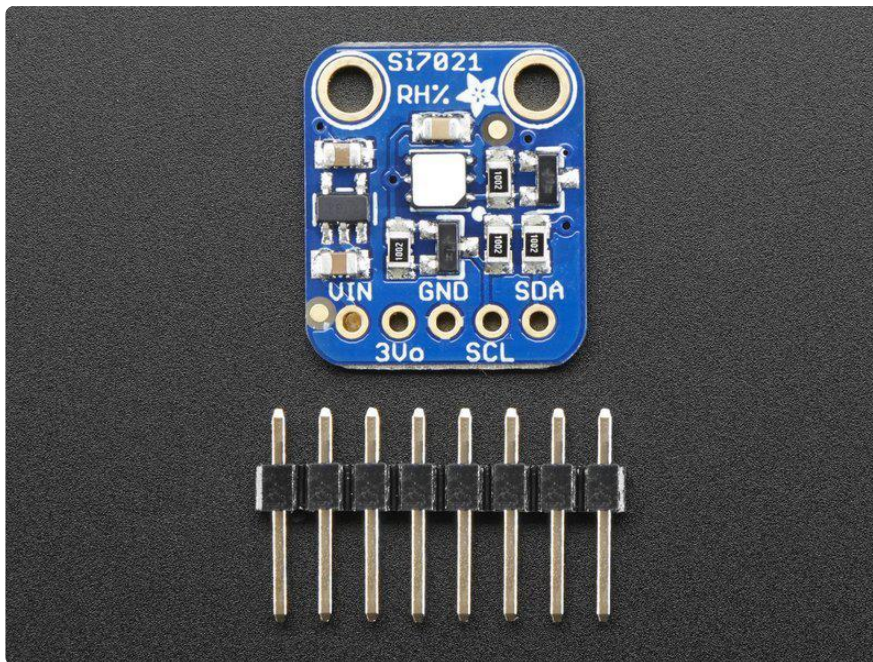
## Power Pins:

- Vin - this is the power pin. Since the chip uses 3 VDC, we have included a voltage regulator on board that will take 3-5VDC and safely convert it down. To power the board, give it the same power as the logic level of your microcontroller - e.g. for a 5V micro like Arduino, use 5V
- 3v3 - this is the 3.3V output from the voltage regulator, you can grab up to 100mA from this if you like
- GND - common ground for power and logic

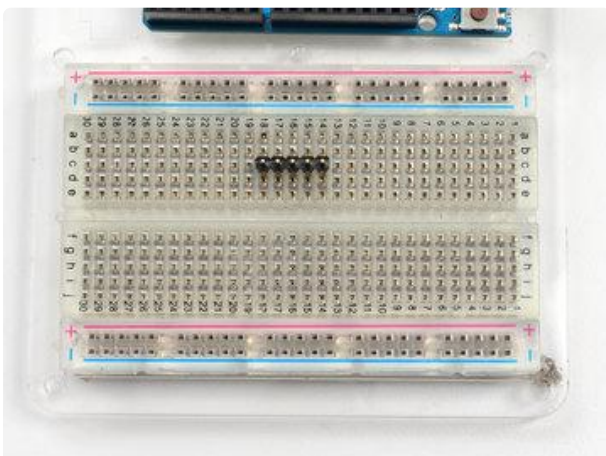
## I2C Logic pins:

- SCL - I2C clock pin, connect to your microcontrollers I2C clock line.
- SDA - I2C data pin, connect to your microcontrollers I2C data line.
- [STEMMA QT \(https://adafru.it/Ft4\)](https://adafru.it/Ft4) - These connectors allow you to connect to dev boards with STEMMA QT connectors or to other things with [various associated accessories \(https://adafru.it/Ft6\)](https://adafru.it/Ft6).

## Assembly

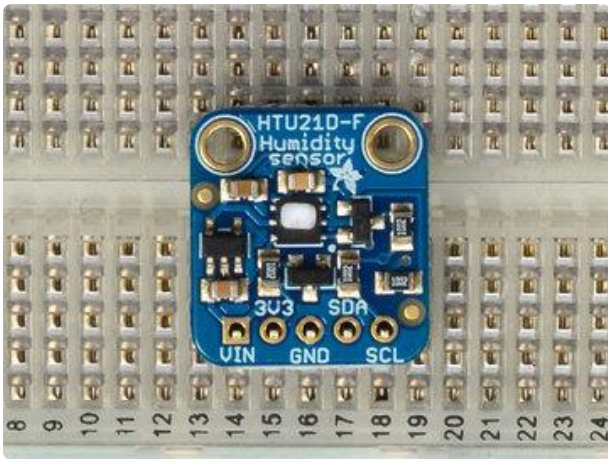


The photos below show a an HTUD21 sensor rather than the Si7021 but the soldering procedure is identical!



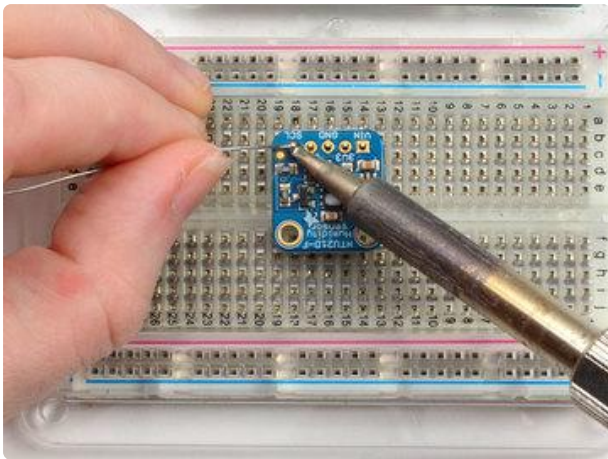
**Prepare the header strip:**  
Cut the strip to length if necessary. It will be easier to solder if you insert it into a breadboard - long pins down





## Add the breakout board:

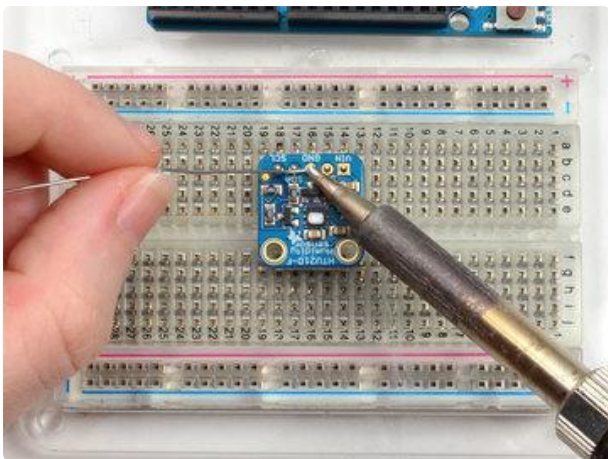
Place the breakout board over the pins so that the short pins poke through the breakout pads



## And Solder!

Be sure to solder all pins for reliable electrical contact.

(For tips on soldering, be sure to check out our [Guide to Excellent Soldering \(https://adafruit.it/aTk\)](https://adafruit.it/aTk)).





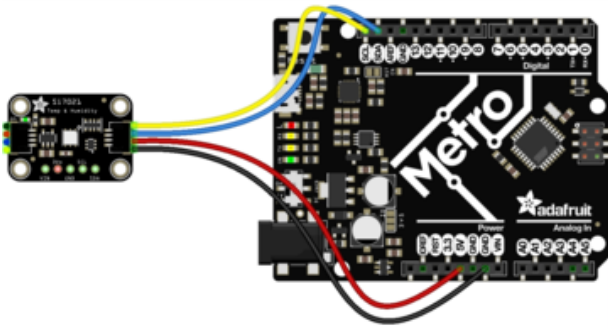


You're done! Check your solder joints visually and continue onto the next steps

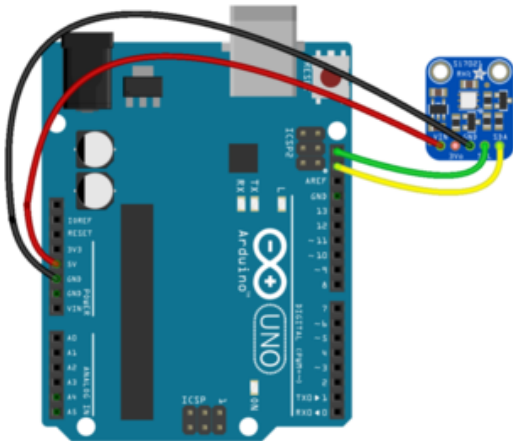
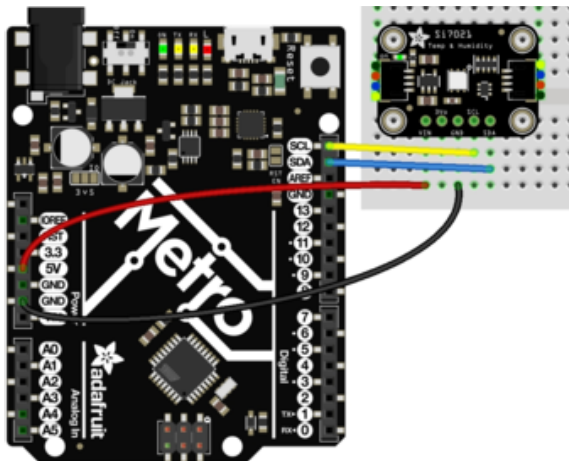
---

## Arduino Code

You can easily wire this breakout to any microcontroller, we'll be using an Arduino. For another kind of microcontroller, just make sure it has I2C, then port the code - its pretty simple stuff!



fritzing



- Connect Vin to the power supply, 3-5V is fine. (red wire on STEMMA QT version) Use the same voltage that the microcontroller logic is based off of. For most Arduinos, that is 5V
- Connect GND to common power/ data ground (black wire on STEMMA QT version)
- Connect the SCL pin to the I2C clock SCL pin on your Arduino. (yellow wire on STEMMA QT version) On an UNO & '328 based Arduino, this is also known as A5, on a Mega it is also known as digital 21 and on a Leonardo/Micro, digital 3
- Connect the SDA pin to the I2C data SDA pin on your Arduino. (blue wire on STEMMA QT version) On an UNO & '328 based Arduino, this is also known as A4, on a Mega it is also known as digital 20 and on a Leonardo/Micro, digital 2

diagram.fzz Fritzing file

<https://adafru.it/rAA>

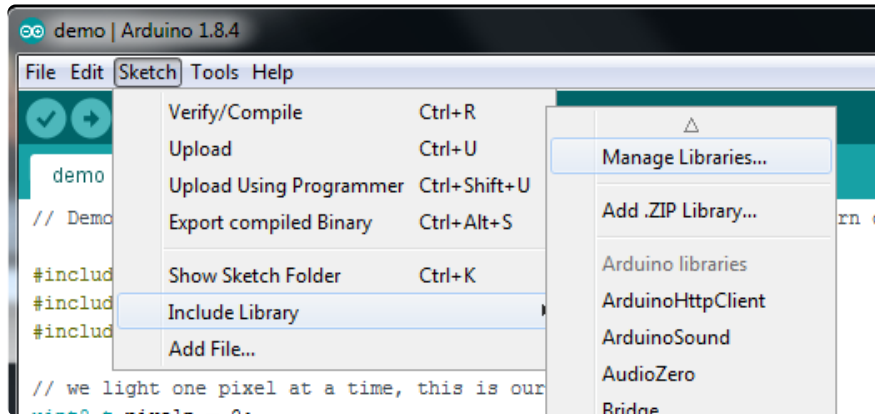
The Si7021 has a default I2C address of 0x40 and cannot be changed!



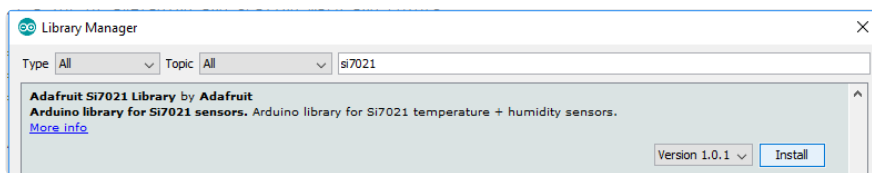
# Install Adafruit\_Si7021 library

To begin reading sensor data, you will need to [install the Adafruit\\_Si7021 library \(code on our github repository\)](https://adafru.it/rAw) (<https://adafru.it/rAw>). It is available from the Arduino library manager so we recommend using that.

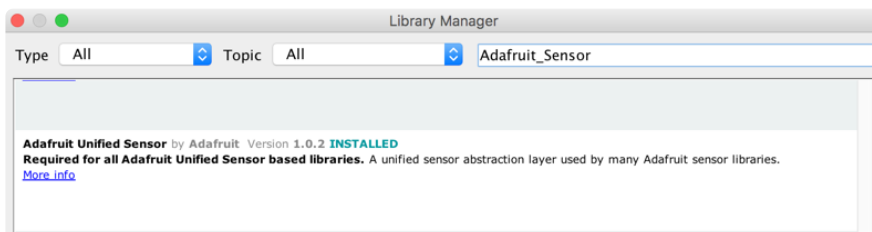
From the IDE open up the library manager...



And type in adafruit si7021 to locate the library. Click Install



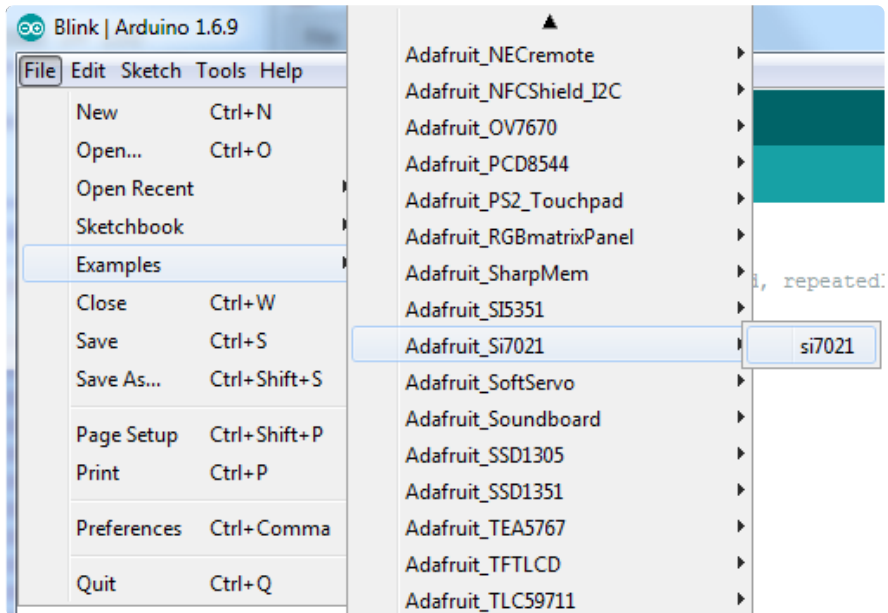
Also install the Adafruit Unified Sensor library in the same way:



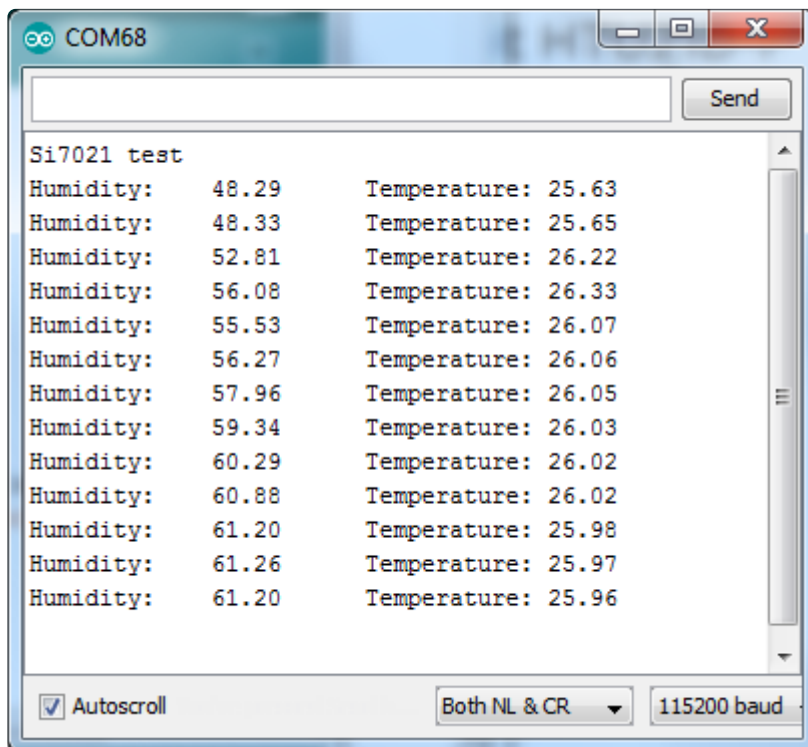
We also have a great tutorial on Arduino library installation at: <https://learn.adafruit.com/adafruit-all-about-arduino-libraries-install-use> (<https://adafru.it/aYM>)

# Load Demo

Open up File->Examples->Adafruit\_Si7021->si7021 and upload to your Arduino wired up to the sensor



That's it! Now open up the serial terminal window at 115200 speed to begin the test.



You can try breathing on the sensor to increase the humidity. The sensor reacts very fast!



# Library Reference

The library we have is simple and easy to use

You can create the `Adafruit_Si7021` object with:

```
Adafruit_Si7021 sensor = Adafruit_Si7021();
```

There are no pins to set since you must use the I2C bus!

Then initialize the sensor with:

```
sensor.begin();
```

this function returns `True` if the sensor was found and responded correctly and `False` if it was not found

Once initialized, you can query the temperature in °C with

```
sensor.readTemperature()
```

Which will return floating point (decimal + fractional) temperature. You can convert to Fahrenheit by multiplying by 1.8 and adding 32 as you have learned in grade school!

Reading the humidity is equally simple. Call

```
sensor.readHumidity()
```

to read the humidity also as a floating point value between 0 and 100 (this reads % humidity)

This sensor also has a serial number which you might find handy! Call `sensor.readSerialNumber()` to read out the 8 bytes of unique ID. Then you can access them from `sensor.sernum_a` and `sensor.sernum_b`

---

# Python & CircuitPython

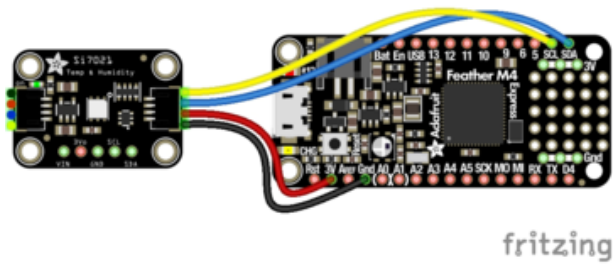
It's easy to use the Si7021 sensor with Python or CircuitPython and the [Adafruit CircuitPython SI7021 \(https://adafru.it/BfV\)](https://adafru.it/BfV) module. This module allows you to easily write Python code that reads the humidity and temperature, pressure from the sensor.

You can use this sensor with any CircuitPython microcontroller board or with a computer that has GPIO and Python [thanks to Adafruit\\_Blinka, our CircuitPython-for-Python compatibility library \(https://adafru.it/BSN\)](https://adafru.it/BSN).

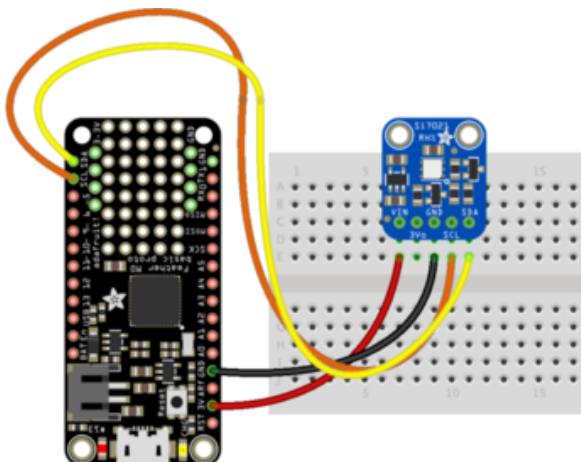
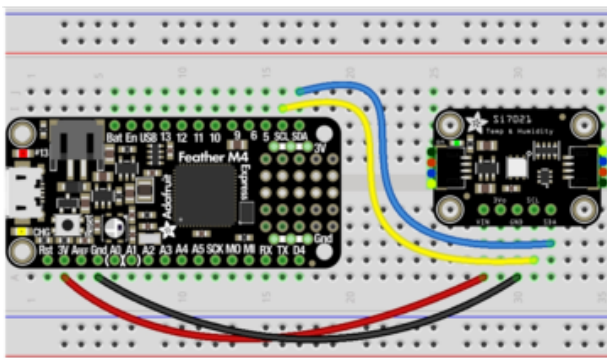
## CircuitPython Microcontroller Wiring

First wire up a SI7021 to your board exactly as shown on the previous pages for Arduino. Here's an example of wiring a Feather M0 or M4 to the sensor with I2C:





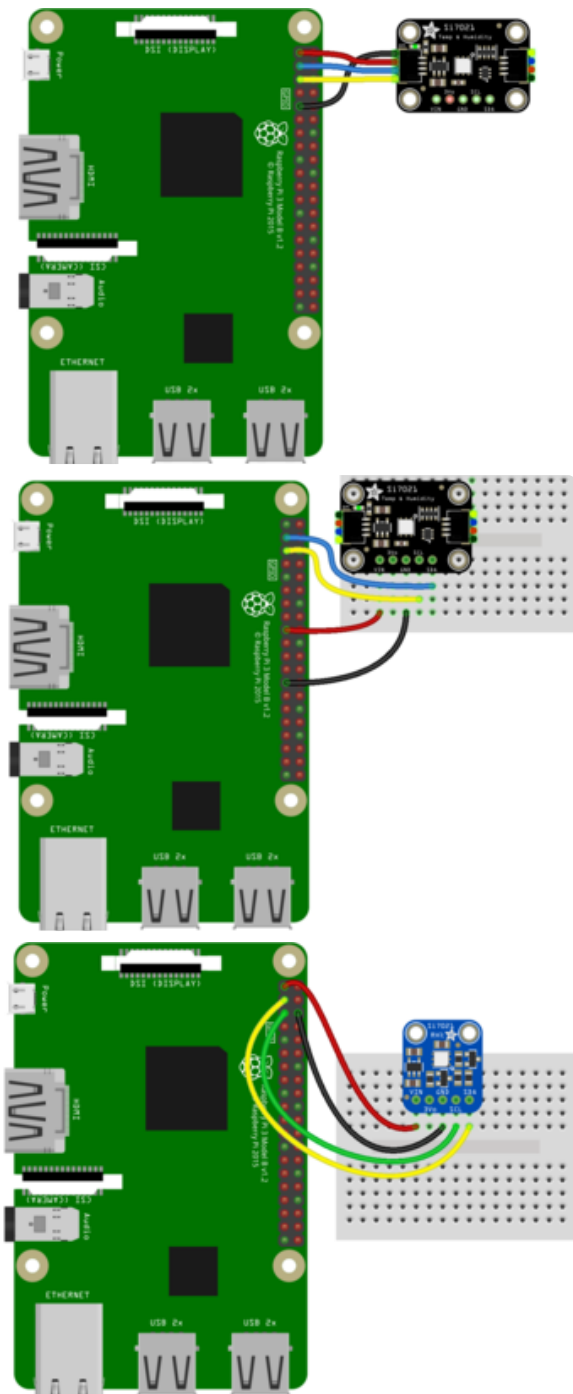
- Board 3V to sensor VIN (red wire on STEMMA QT version)
- Board GND to sensor GND (black wire on STEMMA QT version)
- Board SCL to sensor SCL (yellow wire on STEMMA QT version)
- Board SDA to sensor SDA (blue wire on STEMMA QT version)



## Python Computer Wiring

Since there's dozens of Linux computers/boards you can use we will show wiring for Raspberry Pi. For other platforms, [please visit the guide for CircuitPython on Linux to see whether your platform is supported \(https://adafruit.it/BSN\)](https://adafruit.it/BSN).

Here's the Raspberry Pi wired with I2C:



- Pi 3V3 to sensor VIN (red wire on STEMMA QT version)
- Pi GND to sensor GND (black wire on STEMMA QT version)
- Pi SCL to sensor SCL (yellow wire on STEMMA QT version)
- Pi SDA to sensor SDA (blue wire on STEMMA QT version)

## CircuitPython Installation of Si7021 Library

You'll need to install the [Adafruit CircuitPython Si7021 \(https://adafruit.it/BfV\)](https://adafruit.it/BfV) library on your CircuitPython board.

First make sure you are running the [latest version of Adafruit CircuitPython \(https://adafruit.it/tBa\)](https://adafruit.it/tBa) for your board.



Next you'll need to install the necessary libraries to use the hardware--carefully follow the steps to find and install these libraries from [Adafruit's CircuitPython library bundle \(https://adafru.it/zdx\)](https://adafru.it/zdx). For example the Circuit Playground Express guide has [a great page on how to install the library bundle \(https://adafru.it/Bf2\)](https://adafru.it/Bf2) for both express and non-express boards.

Remember for non-express boards like the Trinket M0, Gemma M0, and Feather/Metro M0 basic you'll need to manually install the necessary libraries from the bundle:

- adafruit\_si7021.mpy
- adafruit\_bus\_device

You can also download the adafruit\_si7021.mpy from [its releases page on Github \(https://adafru.it/BfW\)](https://adafru.it/BfW).

Before continuing make sure your board's lib folder or root filesystem has the adafruit\_si7021.mpy, and adafruit\_bus\_device files and folders copied over.

Next [connect to the board's serial REPL \(https://adafru.it/pMf\)](https://adafru.it/pMf) so you are at the CircuitPython >>> prompt.

## Python Installation of Si7021 Library

You'll need to install the Adafruit\_Blinka library that provides the CircuitPython support in Python. This may also require enabling I2C on your platform and verifying you are running Python 3. [Since each platform is a little different, and Linux changes often, please visit the CircuitPython on Linux guide to get your computer ready \(https://adafru.it/BSN\)](https://adafru.it/BSN)!

Once that's done, from your command line run the following command:

- `sudo pip3 install adafruit-circuitpython-si7021`

If your default Python is version 3 you may need to run 'pip' instead. Just make sure you aren't trying to use CircuitPython on Python 2.x, it isn't supported!

# CircuitPython & Python Usage

To demonstrate the usage of the sensor we'll initialize it and read the temperature and humidity from the board's Python REPL. First run the following code to import the necessary modules and initialize the I2C bus:

```
import board
import adafruit_si7021
sensor = adafruit_si7021.SI7021(board.I2C())
```

Now you're ready to read values from the sensor using any of these properties:

- `temperature` - The sensor temperature in degrees Celsius.
- `relative_humidity` - The percent humidity as a value from 0 to 100%.

```
print('Temperature: {} degrees C'.format(sensor.temperature))
print('Humidity: {}%'.format(sensor.relative_humidity))
```

```
>>> print('Temperature: {} degrees C'.format(sensor.temperature))
Temperature: 21.6142 degrees C
>>> print('Humidity: {}%'.format(sensor.relative_humidity))
Humidity: 48.0605%
>>> █
```

That's all there is to using the Si7021 sensor with CircuitPython!

## Full Example Code

```
# SPDX-FileCopyrightText: 2021 ladyada for Adafruit Industries
# SPDX-License-Identifier: MIT

"""
Initializes the sensor, gets and prints readings every two seconds.
"""
import time
import board
import adafruit_si7021

# Create library object using our Bus I2C port
sensor = adafruit_si7021.SI7021(board.I2C())

while True:
    print("\nTemperature: %0.1f C" % sensor.temperature)
    print("Humidity: %0.1f %" % sensor.relative_humidity)
    time.sleep(2)
```

---

# Python Library Docs

[Python Library Docs \(https://adafru.it/C3f\)](https://adafru.it/C3f)

---

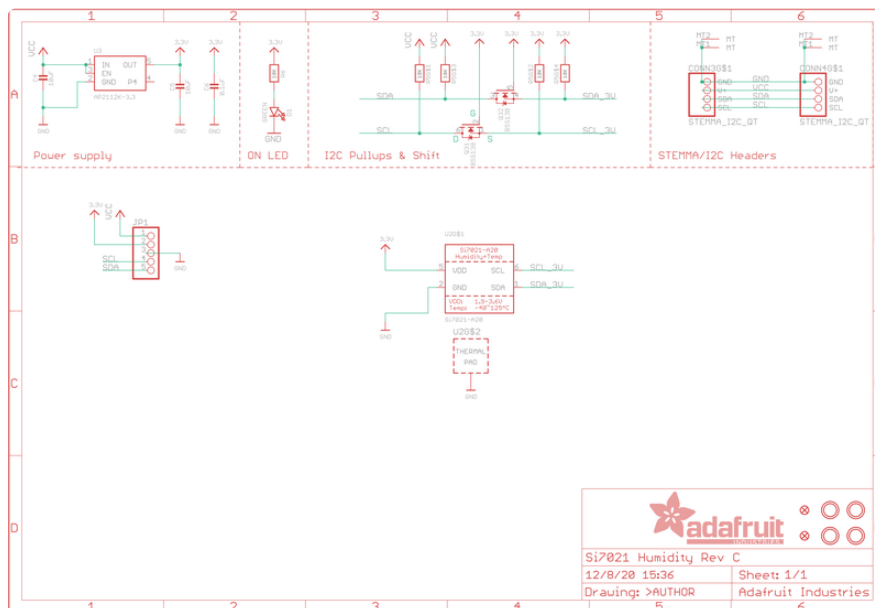
## Downloads

## Files & Datasheets

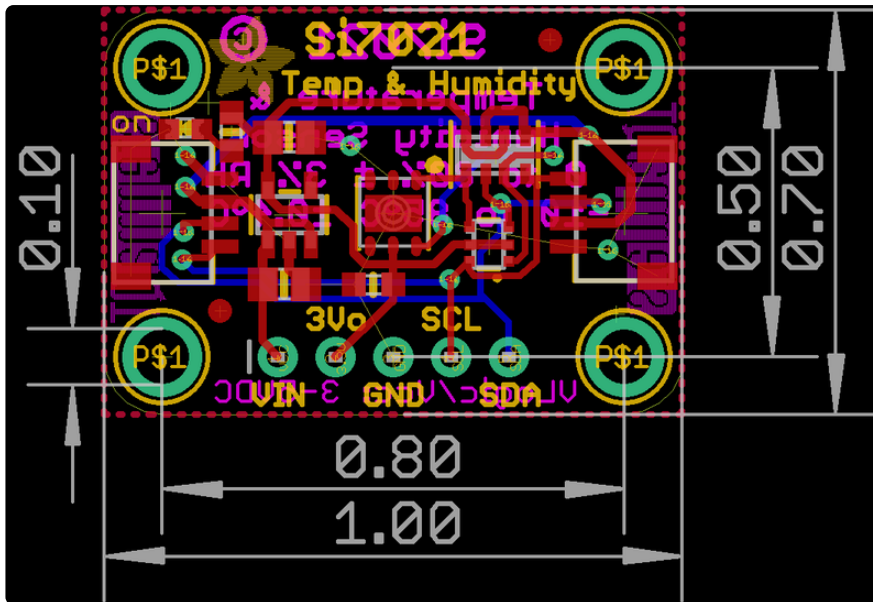
- [Fritzing object in Adafruit Fritzing library \(https://adafru.it/aP3\)](https://adafru.it/aP3)
- [Arduino library on GitHub \(https://adafru.it/rAw\)](https://adafru.it/rAw)
- [EagleCAD PCB files on GitHub \(https://adafru.it/rAB\)](https://adafru.it/rAB)
- [Si7021-A20 datasheet \(https://adafru.it/rAC\)](https://adafru.it/rAC)
- [K&R Smith calibration notes \(https://adafru.it/BfU\)](https://adafru.it/BfU)

If you try writing your own I2C driver, please be aware it is possible to brick a Si7021 by having it erase its calibration memory! [https://www.silabs.com/community/sensors/forum.topic.html/si7021\\_loses\\_serial-Lkb7](https://www.silabs.com/community/sensors/forum.topic.html/si7021_loses_serial-Lkb7)

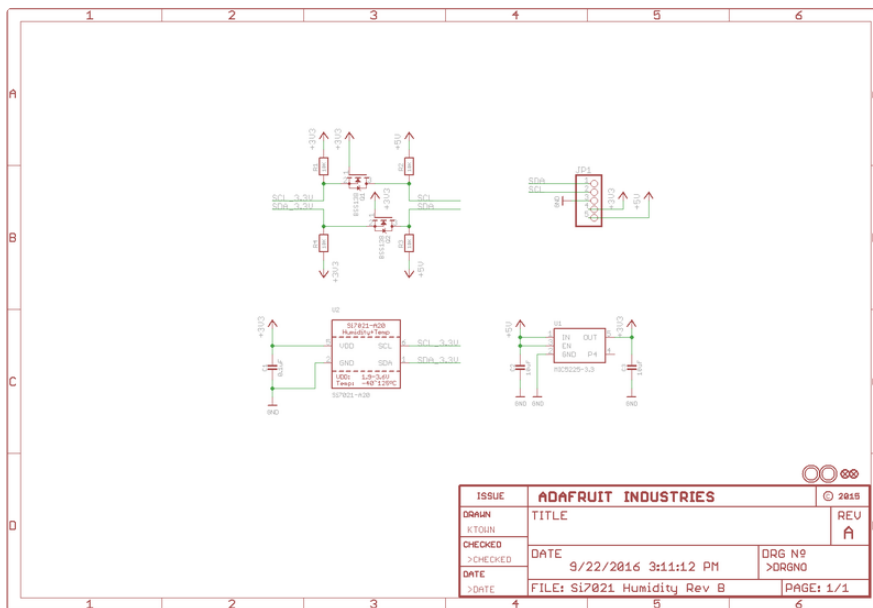
## Schematic and Fabrication Print STEMMA QT Version

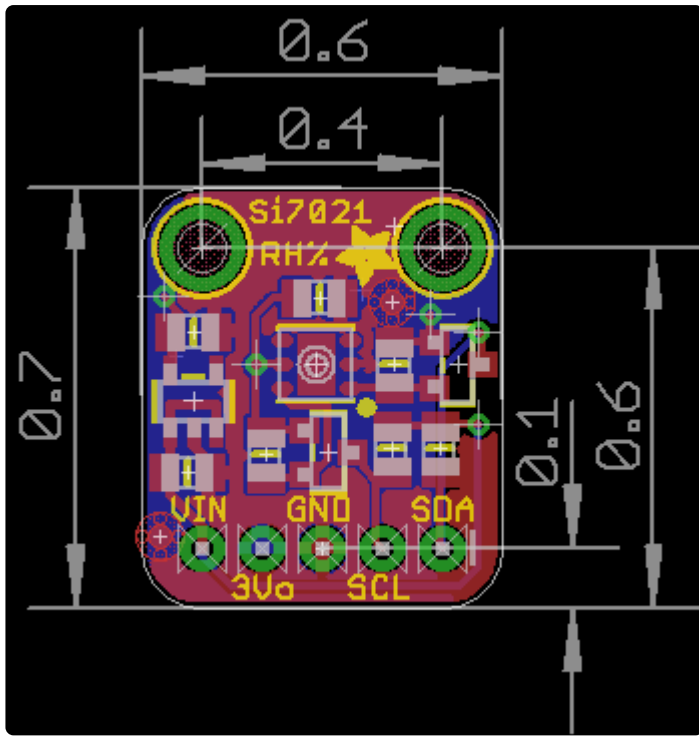






## Schematic and Fabrication Print Original Version





## X-ON Electronics

Largest Supplier of Electrical and Electronic Components

*Click to view similar products for [Temperature Sensor Development Tools](#) category:*

*Click to view products by [Adafruit](#) manufacturer:*

Other Similar products are found below :

[EVAL-ADT7516EBZ](#) [EVAL-ADT75EBZ](#) [T20321SS2B](#) [T2016P2CRRXC4S2](#) [MAX1455EVKIT-NS](#) [DC2507A](#) [DS18B20EVKIT#](#)  
[MAX6654EVKIT](#) [EV-TEMPSENSE-ARDZ](#) [MAX1617AEVKIT](#) [BB-WSK-REF-2](#) [MCP9800DM-TS1](#) [TMPSNSRD-RTD2](#) [MIKROE-2273](#)  
[MIKROE-2501](#) [MIKROE-2539](#) [MIKROE-2554](#) [DPP201Z000](#) [DPP901Z000](#) [1899](#) [EV-BUNCH-WSN-2Z](#) [DPP904R000](#) [KIT0021](#) [SEN0206](#)  
[SEN0227](#) [MIKROE-2769](#) [3251](#) [SEN-13314](#) [3263](#) [SEN0137](#) [LM20XEVM](#) [3328](#) [TMP708EVM](#) [BOOSTXL-TMP107](#) [DC1785B](#) [MHUM-01](#)  
[3538](#) [DPP201G000](#) [DFR0066](#) [WPP100B009](#) [SDT310LTC100A3850](#) [SI7005EVB-UDP-M3L1](#) [2857](#) [1782](#) [2652](#) [269](#) [3245](#) [3622](#) [3648](#)  
[3721](#)