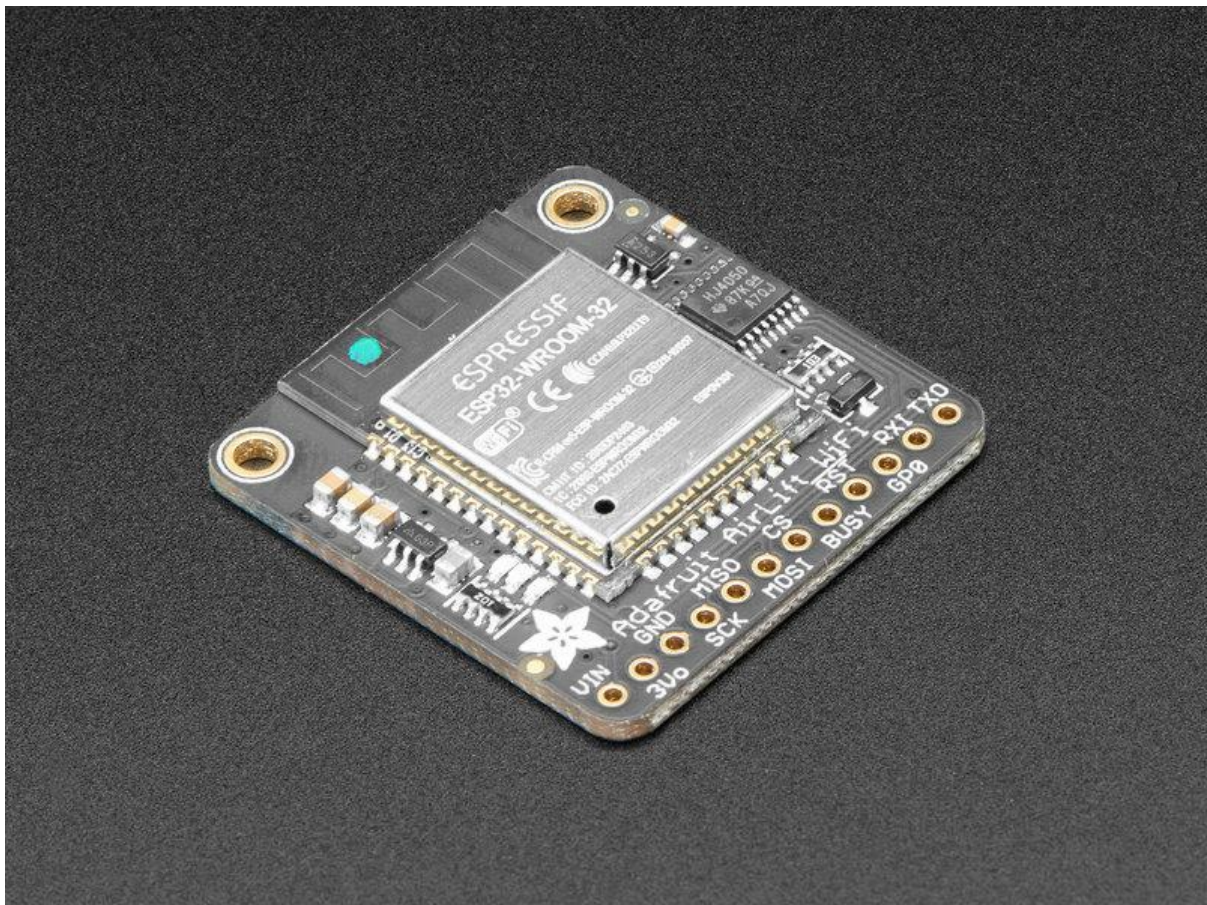




Adafruit AirLift - ESP32 WiFi Co-Processor Breakout

Created by Kattni Rembor



<https://learn.adafruit.com/adafruit-airlift-breakout>

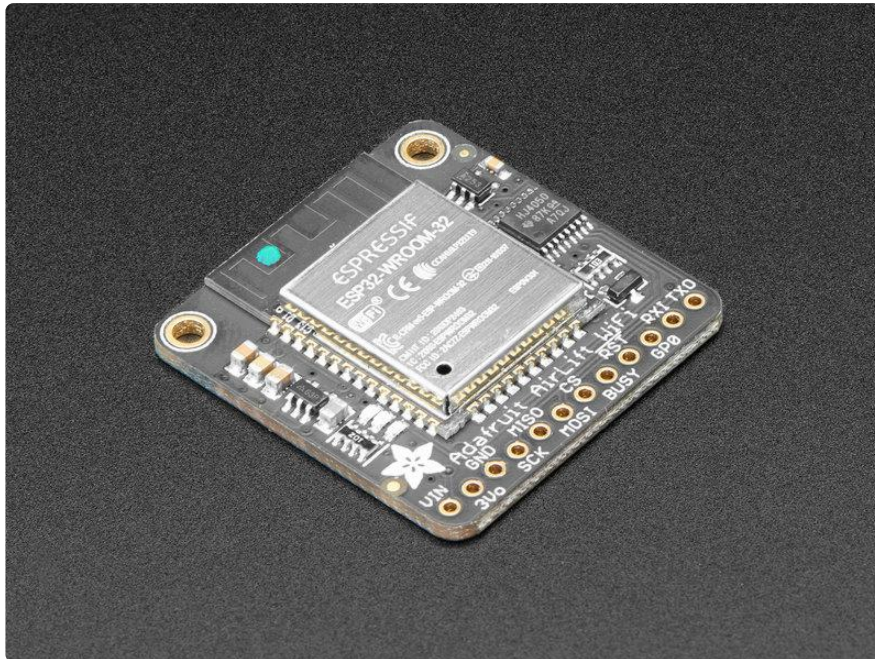
Last updated on 2021-11-15 07:37:31 PM EST

Table of Contents

Overview	5
Pinouts	7
• Power Pins	8
• SPI & Control Pins	8
• LEDs	9
Assembly	10
• Prepare the header strip:	11
• Add the breakout board:	11
• And Solder!	12
CircuitPython WiFi	13
• CircuitPython Microcontroller Pinout	13
• CircuitPython Installation of ESP32SPI Library	14
• CircuitPython Usage	14
Internet Connect!	15
• What's a secrets file?	16
• Connect to WiFi	17
• Requests	21
• HTTP GET with Requests	23
• HTTP POST with Requests	24
• Advanced Requests Usage	25
• WiFi Manager	26
CircuitPython BLE	29
• CircuitPython BLE UART Example	29
• Update the AirLift Firmware	29
• Install CircuitPython Libraries	30
• Install the Adafruit Bluefruit LE Connect App	30
• Copy and Adjust the Example Program	30
• Talk to the AirLift via the Bluefruit LE Connect App	32
Arduino WiFi	34
• Arduino Wiring	34
• Library Install	35
• First Test	36
• WiFi Connection Test	37
• Secure Connection Example	38
• JSON Parsing Demo	40
• Adapting Other Examples	40
Upgrade External ESP32 Airlift Firmware	41
• External AirLift FeatherWing, Shield, or ItsyWing	41
• Upload Serial Passthrough code for Feather or ItsyBitsy	42
• External AirLift Breakout	44
• Code Usage	46
• Install esptool.py	47
• Burning nina-fw with esptool	48
• Verifying the Upgraded Firmware Version	49

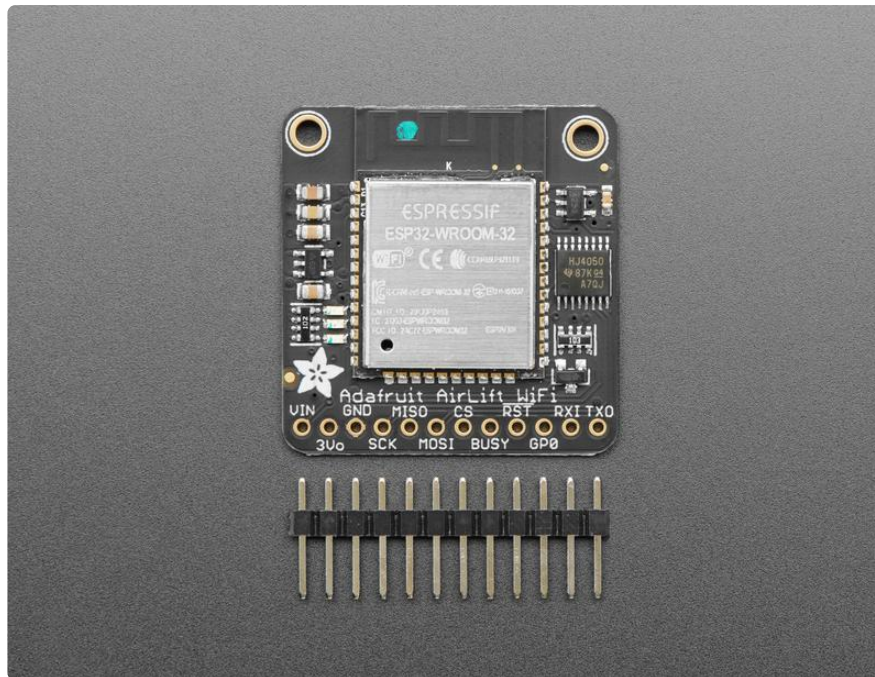
• Arduino	49
• CircuitPython	50
Downloads	50
• Files	50
• Schematic	50
• Fab Print	51

Overview



Give your plain ol' microcontroller project a lift with the Adafruit AirLift - a breakout board that lets you use the powerful ESP32 as a WiFi or BLE co-processor. You probably have your favorite microcontroller (like the ATmega328 or ATSAM51), awesome peripherals and lots of libraries. But it doesn't have WiFi or BLE built in! So lets give that chip a best friend, the ESP32. This chip can handle all the heavy lifting of connecting to a WiFi network and transferring data from a site, even if its using the latest TLS/SSL encryption (it has root certificates pre-burned in).

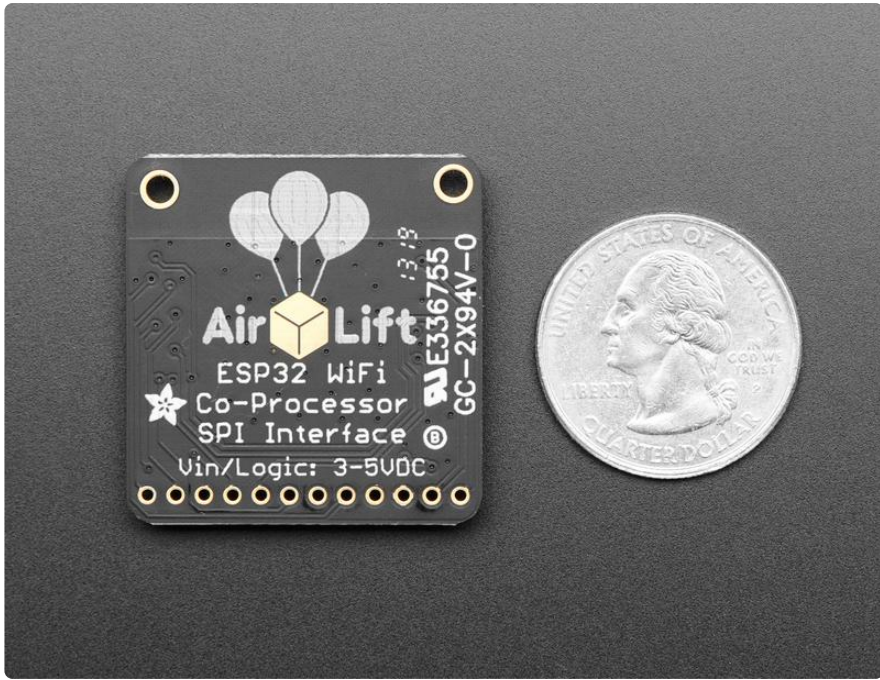
Having WiFi managed by a separate chip means your code is simpler, you don't have to cache socket data, or compile in & debug an SSL library. Send basic but powerful socket-based commands over 8MHz SPI for high speed data transfer. You can use 3V or 5V Arduino, any chip from the ATmega328 or up, although the '328 will not be able to do very complex tasks or buffer a lot of data. It also works great with CircuitPython, a SAMD51/Cortex M4 minimum required since we need a bunch of RAM. All you need is an SPI bus and 2 control pins plus a power supply that can provide up to 250mA during WiFi usage.



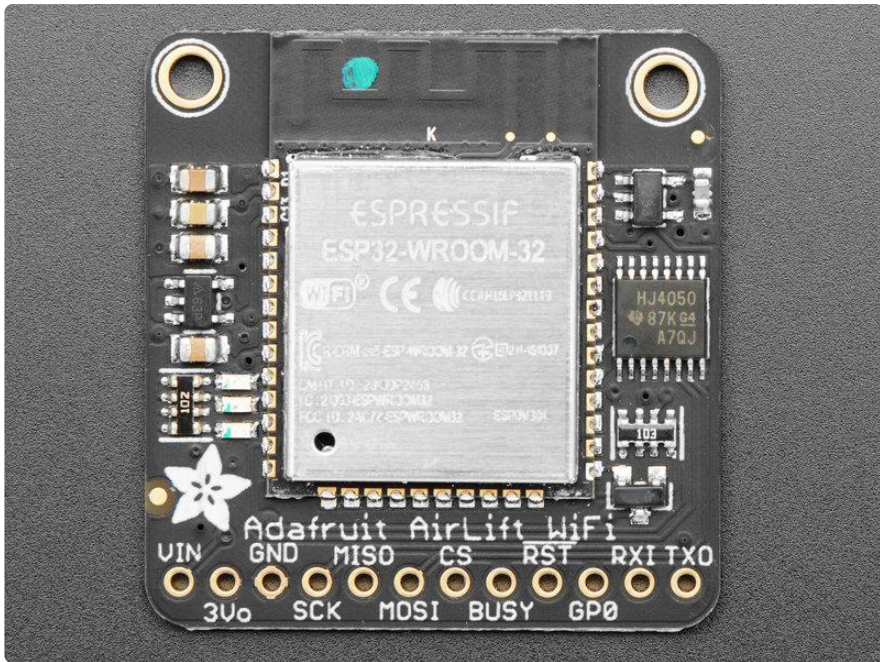
The ESP32 also supports BLE (Bluetooth Low Energy), though not simultaneously with WiFi. Many of our CircuitPython builds include native support for ESP32 BLE. You use a few control pins and the RXI and TXO pins to talk to the ESP32 when it's in BLE mode.

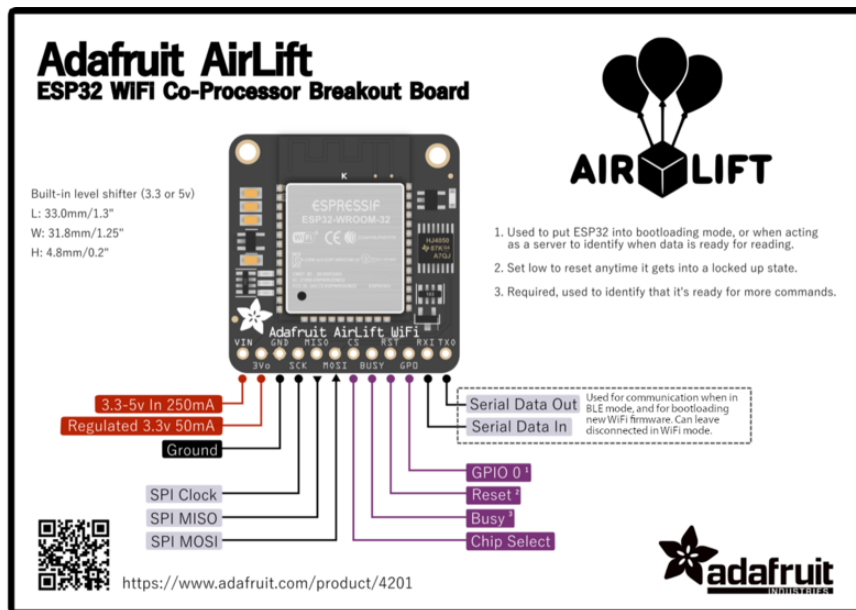
We placed an ESP32 module on a PCB with level shifting circuitry, a 3.3V regulator, and a tri-state chip for MOSI so you can share the SPI bus with other devices. Comes fully assembled and tested, pre-programmed with ESP32 SPI WiFi co-processor firmware that [you can use in CircuitPython to use this into a WiFi co-processor over SPI + 2 pins](https://adafru.it/EvI) (<https://adafru.it/EvI>). We also toss in some header so you can solder it in and plug into a solderless breadboard.

[The firmware on board is a slight variant of the Arduino Wi-Fi NINA core, which works great!](https://adafru.it/E7O) (<https://adafru.it/E7O>) At this time connection to Enterprise WiFi is not yet supported.



Pinouts





Power Pins

Starting from the left are the power in/out pins.

The ESP32 chip can use a lot of power when transmitting. Make sure your power source can handle up to 250mA spikes of current during transmits!

- VIN - This is the power input. Can be 3.3-5VDC, USE A POWER SOURCE THAT CAN HAPPILY SUPPLY 250mA, we will regulate this down to 3.3V safely! This is probably a VBAT or USB pin not a 3.3V regulated output.
- 3v0 - The output from the onboard 3.3V regulator, you can use up to ~50mA for other devices if you want to power them from the same chip
- GND - Power and logic ground.

SPI & Control Pins

To keep transfers speedy, we use SPI not UART Serial. Serial is too slow and hard to synchronize. This uses more pins but the experience is much better!

Classic SPI Pins:

- SCK - SPI Clock from your microcontroller, level shifted so can be 3-5V logic

- MISO - SPI Data from the AirLift to the microcontroller, this is 3.3V logic out, can be read by 3-5V logic. This is tri-stated when not selected, so you can share the SPI bus with other devices.
- MOSI- SPI Data to the AirLift from the microcontroller, level shifted so can be 3-5V logic
- CS - SPI Chip Select from the microcontroller to start sending commands to the AirLift, level shifted so can be 3-5V logic. Also used to choose WiFi or BLE on reset.

Required Control Pins:

- BUSY - this pin is an input from the AirLift, it will let us know when its ready for more commands to be sent. This is 3.3V logic out, can be read by 3-5V logic. This pin must be connected.
- !RESET - this pin is an output to the AirLift. Set low to put the AirLift into reset. You should use this pin, even though you might be able to run for a short while without it, it's essential to 'kick' the chip if it ever gets into a locked up state. Level shifted so can be 3-5V logic

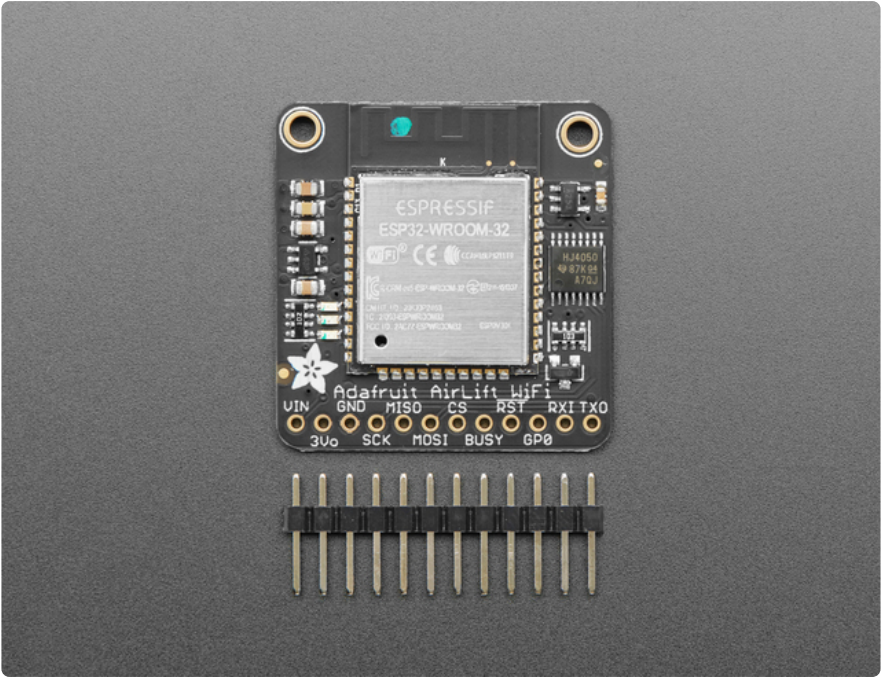
Optional Control Pins:

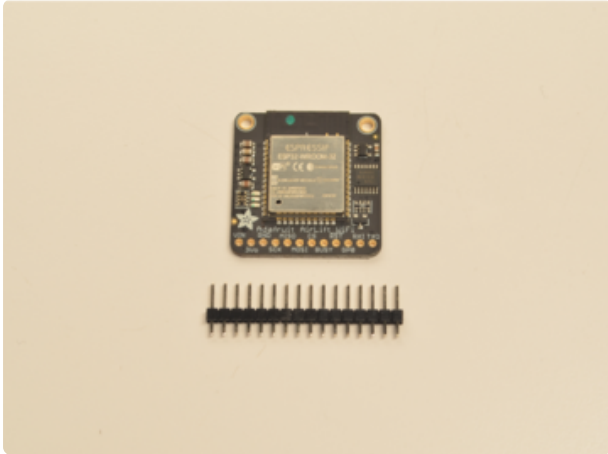
- GP0 - this is the ESP32 GPIO0 pin, which is used to put it into bootloading mode. It is also used if you like when the ESP32 is acting as a server, to let you know data is ready for reading. It's not required in WiFi mode, so you can leave it disconnected. But you'll need to connect it for BLE mode.
- RXI & TXO - Serial data in and Serial data out, used for bootloading new firmware, and for communication when in BLE mode. Leave disconnected if not using BLE or when not uploading new WiFi firmware to the AirLift (which is a rare occurrence).

LEDs

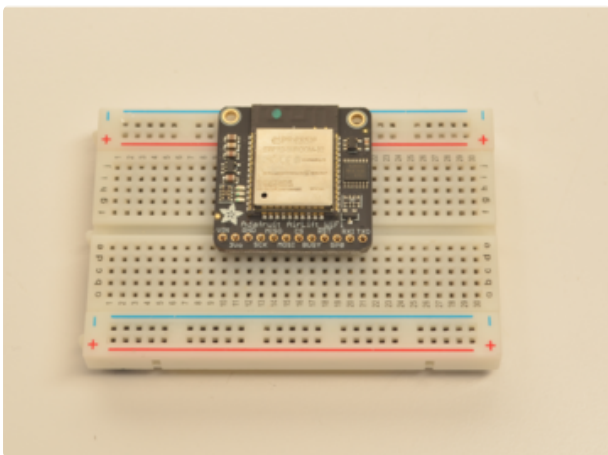
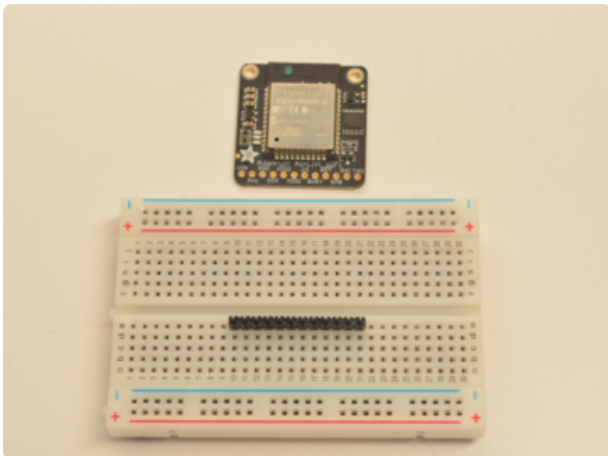
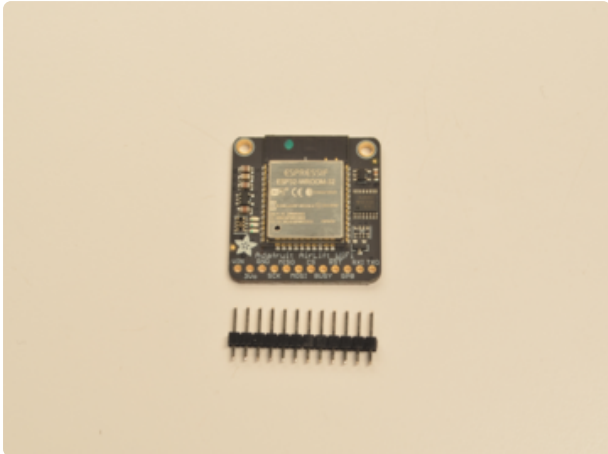
There are 3 very tiny red, green and blue LEDs to the left of the ESP32, these are available in the Arduino library if you'd like to PWM them for a visual alert.

Assembly

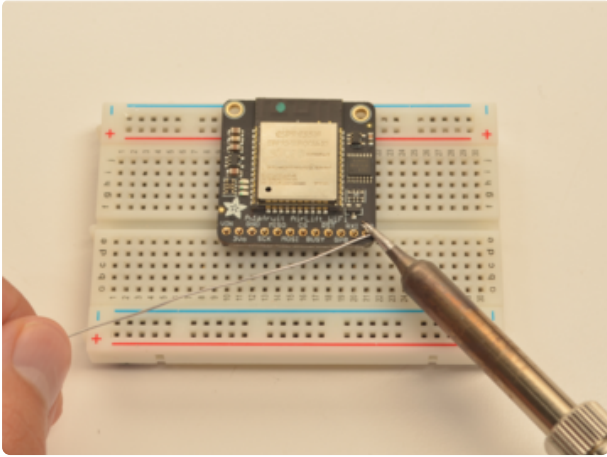




Prepare the header strip:
Cut the strip to length if necessary. It will be easier to solder if you insert it into a breadboard - long pins down



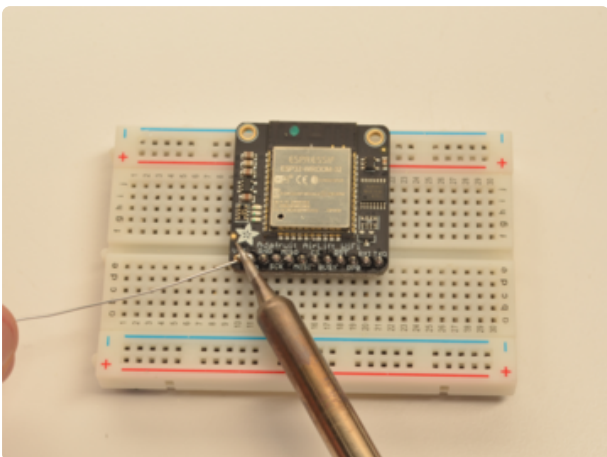
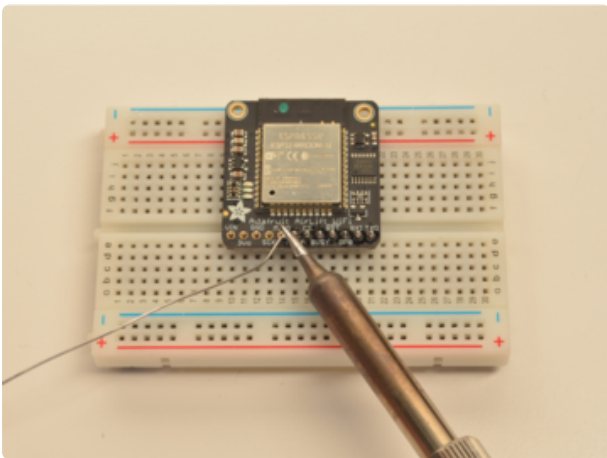
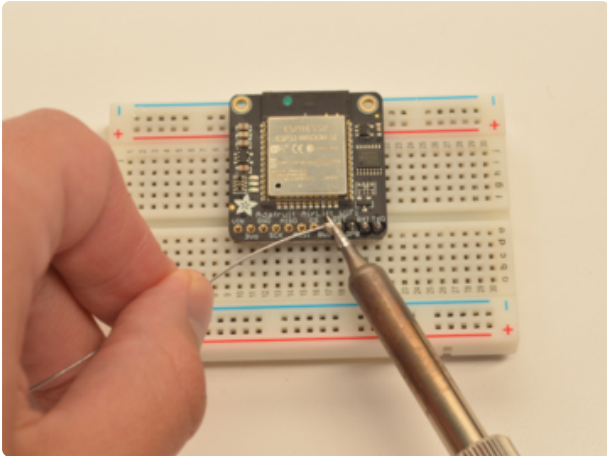
Add the breakout board:
Place the breakout board over the pins so that the short pins poke through the breakout pads

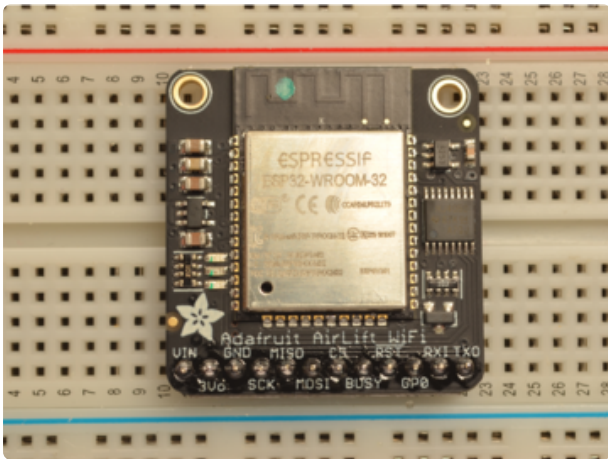


And Solder!

Be sure to solder all 12 pins for reliable electrical contact.

(For tips on soldering, be sure to check out our [Guide to Excellent Soldering](https://adafru.it/aTk) (<https://adafru.it/aTk>)).





You're done! Check your solder joints visually and continue onto the next steps

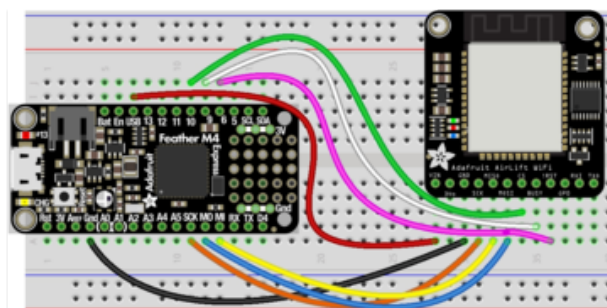
CircuitPython WiFi

It's easy to use the Adafruit AirLift breakout with CircuitPython and the [Adafruit CircuitPython ESP32SPI](https://adafru.it/DWV) (<https://adafru.it/DWV>) module. This module allows you to easily add WiFi to your project.

The ESP32SPI library requires a microcontroller with ~128KB of RAM or more. The SAMD21 will not work.

CircuitPython Microcontroller Pinout

First, wire up your AirLift as follows. The following example shows it wired to a Feather M4 using SPI:



- Board VIN to Feather USB
- Board GND to Feather GND
- Board SCK to Feather SCK
- Board MISO to Feather MI
- Board MOSI to Feather MO
- Board CS to Feather D10
- Board BUSY to Feather D9
- Board !RST to Feather D6

You must use USB or VBAT for powering the AirLift Breakout!

CircuitPython Installation of ESP32SPI Library

You'll need to install the [Adafruit CircuitPython ESP32SPI \(https://adafru.it/DWV\)](https://adafru.it/DWV) library on your CircuitPython board.

First make sure you are running the [latest version of Adafruit CircuitPython \(https://adafru.it/Amd\)](https://adafru.it/Amd) for your board.

Next you'll need to install the necessary libraries to use the hardware--carefully follow the steps to find and install these libraries from [Adafruit's CircuitPython library bundle \(https://adafru.it/uap\)](https://adafru.it/uap). Our CircuitPython starter guide has [a great page on how to install the library bundle \(https://adafru.it/ABU\)](https://adafru.it/ABU).

You can manually install the necessary libraries from the bundle:

- adafruit_esp32spi
- adafruit_requests.mpy
- adafruit_bus_device

Before continuing make sure your board's lib folder or root filesystem has the adafruit_esp32spi, adafruit_requests.mpy, and adafruit_bus_device files and folders copied over.

Next [make sure you are set up to connect to the serial console \(https://adafru.it/Bec\)](https://adafru.it/Bec)

CircuitPython Usage

Copy the following code to your code.py file on your microcontroller:

```
import board
import busio
from digitalio import DigitalInOut

from adafruit_esp32spi import adafruit_esp32spi
import adafruit_requests as requests

print("ESP32 SPI hardware test")

esp32_cs = DigitalInOut(board.D10)
esp32_ready = DigitalInOut(board.D9)
esp32_reset = DigitalInOut(board.D7)

spi = busio.SPI(board.SCK, board.MOSI, board.MISO)
```

```

esp = adafruit_esp32spi.ESP_SPIcontrol(spi, esp32_cs, esp32_ready, esp32_reset)

if esp.status == adafruit_esp32spi.WL_IDLE_STATUS:
    print("ESP32 found and in idle mode")
print("Firmware vers.", esp.firmware_version)
print("MAC addr:", [hex(i) for i in esp.MAC_address])

for ap in esp.scan_networks():
    print("\t%s\t\tRSSI: %d" % (str(ap['ssid'], 'utf-8'), ap['rssi']))

print("Done!")

```

[Connect to the serial console \(https://adafru.it/BIO\)](https://adafru.it/BIO) to see the output. It should look something like the following:

```

code.py output:
ESP32 SPI hardware test
ESP32 found and in idle mode
Firmware vers. bytearray(b'1.3.0\x00')
MAC addr: ['0xbd', '0xb0', '0xe', '0x33', '0x4f', '0xc4']
Get scan
  Adafruit          RSSI: -50
  Adafruit          RSSI: -57
  ESP_88EF6C       RSSI: -61
  consulatewireless RSSI: -70
  Adafruit          RSSI: -71
  Consulate Guest  RSSI: -71
  consulatewireless RSSI: -72
  Consulate Guest  RSSI: -73
  consulatewireless RSSI: -74
  ndm-studiompro2-hotspot RSSI: -74
Done!

Press any key to enter the REPL. Use CTRL-D to reload. █

```

Make sure you see the same output! If you don't, check your wiring. Note that we've changed the pinout in the code example above to reflect the CircuitPython Microcontroller Pinout at the top of this page.

Once you've succeeded, continue onto the next page!

If you can read the Firmware and MAC address but fails on scanning SSIDs, check your power supply, you may be running out of juice to the ESP32 and it's resetting

Internet Connect!

Once you have CircuitPython setup and libraries installed we can get your board connected to the Internet.

To get connected, you will need to start by creating a secrets file.

What's a secrets file?

We expect people to share tons of projects as they build CircuitPython WiFi widgets. What we want to avoid is people accidentally sharing their passwords or secret tokens and API keys. So, we designed all our examples to use a `secrets.py` file, that is in your CIRCUITPY drive, to hold secret/private/custom data. That way you can share your main project without worrying about accidentally sharing private stuff.

Your secrets.py file should look like this:

```
# This file is where you keep secret settings, passwords, and tokens!  
# If you put them in the code you risk committing that info or sharing it  
  
secrets = {  
    'ssid' : 'home ssid',  
    'password' : 'my password',  
    'timezone' : "America/New_York", # http://worldtimeapi.org/timezones  
    'github_token' : 'fawfj23rakjnfawiefa',  
    'hackaday_token' : 'h4xx0rs3kret',  
}
```

Inside is a python dictionary named secrets with a line for each entry. Each entry has an entry name (say `'ssid'`) and then a colon to separate it from the entry key `'home ssid'` and finally a comma ,

At a minimum you'll need the `ssid` and `password` for your local WiFi setup. As you make projects you may need more tokens and keys, just add them one line at a time. See for example other tokens such as one for accessing github or the hackaday API. Other non-secret data like your timezone can also go here, just cause its called secrets doesn't mean you can't have general customization data in there!

For the correct time zone string, look at <http://worldtimeapi.org/timezones> (<https://adafru.it/EcP>) and remember that if your city is not listed, look for a city in the same time zone, for example Boston, New York, Philadelphia, Washington DC, and Miami are all on the same time as New York.

Of course, don't share your secrets.py - keep that out of GitHub, Discord or other project-sharing sites.

Connect to WiFi

OK now you have your secrets setup - you can connect to the Internet using the ESP32SPI and the Requests modules.

First make sure you are running the [latest version of Adafruit CircuitPython](https://adafru.it/Amd) (<https://adafru.it/Amd>) for your board.

Next you'll need to install the necessary libraries to use the hardware--carefully follow the steps to find and install these libraries from [Adafruit's CircuitPython library bundle](https://adafru.it/zdx) (<https://adafru.it/zdx>). Our introduction guide has [a great page on how to install the library bundle](https://adafru.it/ABU) (<https://adafru.it/ABU>) for both express and non-express boards.

Remember for non-express boards like the, you'll need to manually install the necessary libraries from the bundle:

- adafruit_bus_device
- adafruit_esp32_spi
- adafruit_requests
- neopixel

Before continuing make sure your board's lib folder or root filesystem has the above files copied over.

Next [connect to the board's serial REPL](https://adafru.it/Awz) (<https://adafru.it/Awz>) so you are at the CircuitPython >>> prompt.

Into your `lib` folder. Once that's done, load up the following example using Mu or your favorite editor:

```
# SPDX-FileCopyrightText: 2019 ladyada for Adafruit Industries
# SPDX-License-Identifier: MIT

import board
import busio
from digitalio import DigitalInOut
import adafruit_requests as requests
import adafruit_esp32spi.adafruit_esp32spi_socket as socket
from adafruit_esp32spi import adafruit_esp32spi

# Get wifi details and more from a secrets.py file
try:
    from secrets import secrets
except ImportError:
    print("WiFi secrets are kept in secrets.py, please add them there!")
    raise
```

```

print("ESP32 SPI webclient test")

TEXT_URL = "http://wifitest.adafruit.com/testwifi/index.html"
JSON_URL = "http://api.coindesk.com/v1/bpi/currentprice/USD.json"

# If you are using a board with pre-defined ESP32 Pins:
esp32_cs = DigitalInOut(board.ESP_CS)
esp32_ready = DigitalInOut(board.ESP_BUSY)
esp32_reset = DigitalInOut(board.ESP_RESET)

# If you have an AirLift Shield:
# esp32_cs = DigitalInOut(board.D10)
# esp32_ready = DigitalInOut(board.D7)
# esp32_reset = DigitalInOut(board.D5)

# If you have an AirLift Featherwing or ItsyBitsy AirLift:
# esp32_cs = DigitalInOut(board.D13)
# esp32_ready = DigitalInOut(board.D11)
# esp32_reset = DigitalInOut(board.D12)

# If you have an externally connected ESP32:
# NOTE: You may need to change the pins to reflect your wiring
# esp32_cs = DigitalInOut(board.D9)
# esp32_ready = DigitalInOut(board.D10)
# esp32_reset = DigitalInOut(board.D5)

spi = busio.SPI(board.SCK, board.MOSI, board.MISO)
esp = adafruit_esp32spi.ESP_SPIcontrol(spi, esp32_cs, esp32_ready, esp32_reset)

requests.set_socket(socket, esp)

if esp.status == adafruit_esp32spi.WL_IDLE_STATUS:
    print("ESP32 found and in idle mode")
print("Firmware vers.", esp.firmware_version)
print("MAC addr:", [hex(i) for i in esp.MAC_address])

for ap in esp.scan_networks():
    print("\t%s\t\tRSSI: %d" % (str(ap["ssid"], "utf-8"), ap["rssi"]))

print("Connecting to AP...")
while not esp.is_connected:
    try:
        esp.connect_AP(secrets["ssid"], secrets["password"])
    except RuntimeError as e:
        print("could not connect to AP, retrying: ", e)
        continue
print("Connected to", str(esp.ssid, "utf-8"), "\tRSSI:", esp.rssi)
print("My IP address is", esp.pretty_ip(esp.ip_address))
print(
    "IP lookup adafruit.com: %s" %
    esp.pretty_ip(esp.get_host_by_name("adafruit.com"))
)
print("Ping google.com: %d ms" % esp.ping("google.com"))

# esp._debug = True
print("Fetching text from", TEXT_URL)
r = requests.get(TEXT_URL)
print("-" * 40)
print(r.text)
print("-" * 40)
r.close()

print()
print("Fetching json from", JSON_URL)
r = requests.get(JSON_URL)
print("-" * 40)
print(r.json())

```

```
print("-" * 40)
r.close()

print("Done!")
```

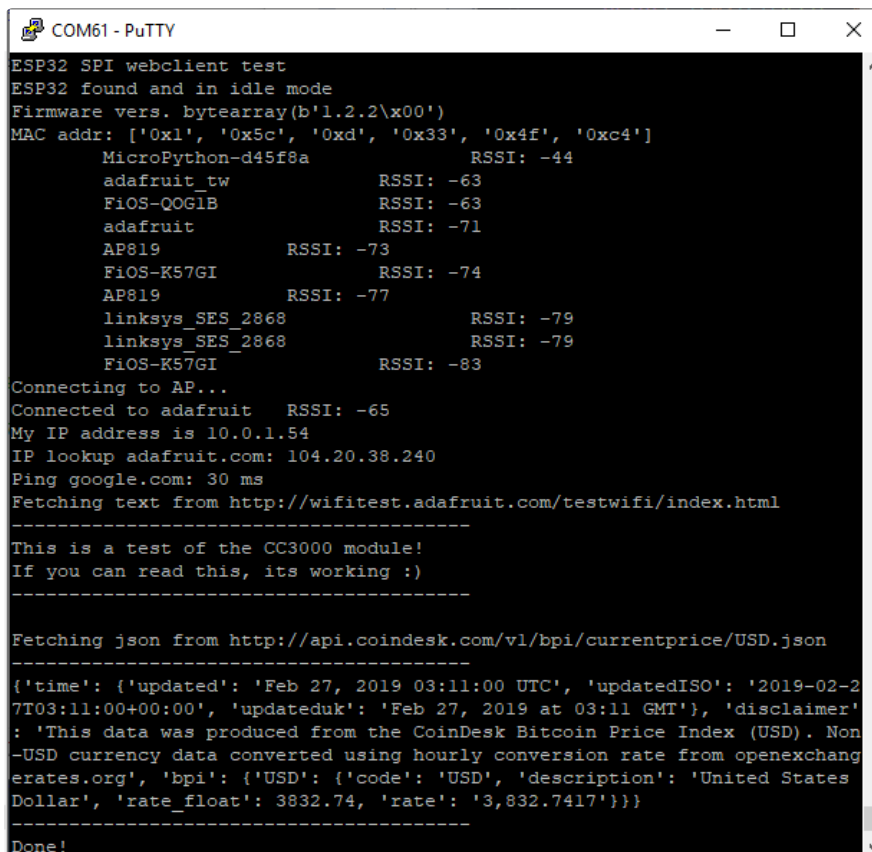
And save it to your board, with the name `code.py`.

You may need to change the `esp32_cs`, `esp32_ready` and `esp32_reset` pins in the code to match your hardware's pinout.

Then go down to this line

```
esp.connect_AP(b'MY_SSID_NAME', b'MY_SSID_PASSWORD')
```

and change `MY_SSID_NAME` and `MY_SSID_PASSWORD` to your access point name and password, keeping them within the " quotes. (This example doesn't use the secrets' file, but its also very stand-alone so if other things seem to not work you can always re-load this. You should get something like the following:



```
COM61 - PuTTY
ESP32 SPI webclient test
ESP32 found and in idle mode
Firmware vers. bytearray(b'1.2.2\x00')
MAC addr: ['0x1', '0x5c', '0xd', '0x33', '0x4f', '0xc4']
MicroPython-d45f8a          RSSI: -44
adafruit_tw                 RSSI: -63
FiOS-QOGLB                  RSSI: -63
adafruit                     RSSI: -71
AP819                       RSSI: -73
FiOS-K57GI                  RSSI: -74
AP819                       RSSI: -77
linksys_SES_2868            RSSI: -79
linksys_SES_2868            RSSI: -79
FiOS-K57GI                  RSSI: -83
Connecting to AP...
Connected to adafruit  RSSI: -65
My IP address is 10.0.1.54
IP lookup adafruit.com: 104.20.38.240
Ping google.com: 30 ms
Fetching text from http://wifitest.adafruit.com/testwifi/index.html
-----
This is a test of the CC3000 module!
If you can read this, its working :)
-----
Fetching json from http://api.coindesk.com/v1/bpi/currentprice/USD.json
-----
{'time': {'updated': 'Feb 27, 2019 03:11:00 UTC', 'updatedISO': '2019-02-27T03:11:00+00:00', 'updateduk': 'Feb 27, 2019 at 03:11 GMT'}, 'disclaimer': 'This data was produced from the CoinDesk Bitcoin Price Index (USD). Non-USD currency data converted using hourly conversion rate from openexchangerates.org', 'bpi': {'USD': {'code': 'USD', 'description': 'United States Dollar', 'rate_float': 3832.74, 'rate': '3,832.7417'}}}
-----
Done!
```

In order, the example code...

Initializes the ESP32 over SPI using the SPI port and 3 control pins:

```

esp32_cs = DigitalInOut(board.ESP_CS)
esp32_ready = DigitalInOut(board.ESP_BUSY)
esp32_reset = DigitalInOut(board.ESP_RESET)

spi = busio.SPI(board.SCK, board.MOSI, board.MISO)
esp = adafruit_esp32spi.ESP_SPIcontrol(spi, esp32_cs, esp32_ready, esp32_reset)

```

Tells our `requests` library the type of socket we're using (socket type varies by connectivity type - we'll be using the `adafruit_esp32spi_socket` for this example). We'll also set the interface to an `esp` object. This is a little bit of a hack, but it lets us use `requests` like CPython does.

```

requests.set_socket(socket, esp)

```

Verifies an ESP32 is found, checks the firmware and MAC address

```

if esp.status == adafruit_esp32spi.WL_IDLE_STATUS:
    print("ESP32 found and in idle mode")
print("Firmware vers.", esp.firmware_version)
print("MAC addr:", [hex(i) for i in esp.MAC_address])

```

Performs a scan of all access points it can see and prints out the name and signal strength:

```

for ap in esp.scan_networks():
    print("\t%s\t\tRSSI: %d" % (str(ap['ssid'], 'utf-8'), ap['rssi']))

```

Connects to the AP we've defined here, then prints out the local IP address, attempts to do a domain name lookup and ping google.com to check network connectivity (note sometimes the ping fails or takes a while, this isn't a big deal)

```

print("Connecting to AP...")
esp.connect_AP(b'MY_SSID_NAME', b'MY_SSID_PASSWORD')
print("Connected to", str(esp.ssid, 'utf-8'), "\tRSSI:", esp.rssi)
print("My IP address is", esp.pretty_ip(esp.ip_address))
print("IP lookup adafruit.com: %s" %
      esp.pretty_ip(esp.get_host_by_name("adafruit.com")))
print("Ping google.com: %d ms" % esp.ping("google.com"))

```

OK now we're getting to the really interesting part. With a SAMD51 or other large-RAM (well, over 32 KB) device, we can do a lot of neat tricks. Like for example we can implement an interface a lot like [requests](https://adafru.it/E9o) (<https://adafru.it/E9o>) - which makes getting data really really easy

To read in all the text from a web URL call `requests.get` - you can pass in `https` URLs for SSL connectivity


```

TEXT_URL = "http://wifitest.adafruit.com/testwifi/index.html"
print("Fetching text from", TEXT_URL)
r = requests.get(TEXT_URL)
print('- '*40)
print(r.text)
print('- '*40)
r.close()

```

Or, if the data is in structured JSON, you can get the json pre-parsed into a Python dictionary that can be easily queried or traversed. (Again, only for nRF52840, M4 and other high-RAM boards)

```

JSON_URL = "http://api.coindesk.com/v1/bpi/currentprice/USD.json"
print("Fetching json from", JSON_URL)
r = requests.get(JSON_URL)
print('- '*40)
print(r.json())
print('- '*40)
r.close()

```

Requests

We've written a [requests-like \(https://adafru.it/Kpa\)](https://adafru.it/Kpa) library for web interfacing named [Adafruit_CircuitPython_Requests \(https://adafru.it/FpW\)](https://adafru.it/FpW). This library allows you to send HTTP/1.1 requests without "crafting" them and provides helpful methods for parsing the response from the server.

Here's an example of using Requests to perform GET and POST requests to a server.

```

# SPDX-FileCopyrightText: 2021 ladyada for Adafruit Industries
# SPDX-License-Identifier: MIT

# adafruit_requests usage with an esp32spi_socket
import board
import busio
from digitalio import DigitalInOut
import adafruit_esp32spi.adafruit_esp32spi_socket as socket
from adafruit_esp32spi import adafruit_esp32spi
import adafruit_requests as requests

# Add a secrets.py to your filesystem that has a dictionary called secrets with
# "ssid" and
# "password" keys with your WiFi credentials. DO NOT share that file or commit it
# into Git or other
# source control.
# pylint: disable=no-name-in-module,wrong-import-order
try:
    from secrets import secrets
except ImportError:
    print("WiFi secrets are kept in secrets.py, please add them there!")
    raise

# If you are using a board with pre-defined ESP32 Pins:
esp32_cs = DigitalInOut(board.ESP_CS)
esp32_ready = DigitalInOut(board.ESP_BUSY)

```

```

esp32_reset = DigitalInOut(board.ESP_RESET)

# If you have an externally connected ESP32:
# esp32_cs = DigitalInOut(board.D9)
# esp32_ready = DigitalInOut(board.D10)
# esp32_reset = DigitalInOut(board.D5)

# If you have an AirLift Featherwing or ItsyBitsy AirLift:
# esp32_cs = DigitalInOut(board.D13)
# esp32_ready = DigitalInOut(board.D11)
# esp32_reset = DigitalInOut(board.D12)

spi = busio.SPI(board.SCK, board.MOSI, board.MISO)
esp = adafruit_esp32spi.ESP_SPIcontrol(spi, esp32_cs, esp32_ready, esp32_reset)

print("Connecting to AP...")
while not esp.is_connected:
    try:
        esp.connect_AP(secrets["ssid"], secrets["password"])
    except RuntimeError as e:
        print("could not connect to AP, retrying: ", e)
        continue
print("Connected to", str(esp.ssid, "utf-8"), "\tRSSI:", esp.rssi)

# Initialize a requests object with a socket and esp32spi interface
socket.set_interface(esp)
requests.set_socket(socket, esp)

TEXT_URL = "http://wifitest.adafruit.com/testwifi/index.html"
JSON_GET_URL = "https://httpbin.org/get"
JSON_POST_URL = "https://httpbin.org/post"

print("Fetching text from %s" % TEXT_URL)
response = requests.get(TEXT_URL)
print("-" * 40)

print("Text Response: ", response.text)
print("-" * 40)
response.close()

print("Fetching JSON data from %s" % JSON_GET_URL)
response = requests.get(JSON_GET_URL)
print("-" * 40)

print("JSON Response: ", response.json())
print("-" * 40)
response.close()

data = "31F"
print("POSTing data to {0}: {1}".format(JSON_POST_URL, data))
response = requests.post(JSON_POST_URL, data=data)
print("-" * 40)

json_resp = response.json()
# Parse out the 'data' key from json_resp dict.
print("Data received from server:", json_resp["data"])
print("-" * 40)
response.close()

json_data = {"Date": "July 25, 2019"}
print("POSTing data to {0}: {1}".format(JSON_POST_URL, json_data))
response = requests.post(JSON_POST_URL, json=json_data)
print("-" * 40)

json_resp = response.json()
# Parse out the 'json' key from json_resp dict.
print("JSON Data received from server:", json_resp["json"])
print("-" * 40)
response.close()

```

The code first sets up the ESP32SPI interface. Then, it initializes a `request` object using an ESP32 `socket` and the `esp` object.

```
import board
import busio
from digitalio import DigitalInOut
import adafruit_esp32spi.adafruit_esp32spi_socket as socket
from adafruit_esp32spi import adafruit_esp32spi
import adafruit_requests as requests

# If you have an externally connected ESP32:
esp32_cs = DigitalInOut(board.D9)
esp32_ready = DigitalInOut(board.D10)
esp32_reset = DigitalInOut(board.D5)

spi = busio.SPI(board.SCK, board.MOSI, board.MISO)
esp = adafruit_esp32spi.ESP_SPIcontrol(spi, esp32_cs, esp32_ready, esp32_reset)

print("Connecting to AP...")
while not esp.is_connected:
    try:
        esp.connect_AP(b'MY_SSID_NAME', b'MY_SSID_PASSWORD')
    except RuntimeError as e:
        print("could not connect to AP, retrying: ",e)
        continue
print("Connected to", str(esp.ssid, 'utf-8'), "\tRSSI:", esp.rssi)

# Initialize a requests object with a socket and esp32spi interface
requests.set_socket(socket, esp)
```

Make sure to set the ESP32 pinout to match your AirLift breakout's connection:

```
esp32_cs = DigitalInOut(board.D9)
esp32_ready = DigitalInOut(board.D10)
esp32_reset = DigitalInOut(board.D5)
```

HTTP GET with Requests

The code makes a HTTP GET request to Adafruit's WiFi testing website - <http://wifitest.adafruit.com/testwifi/index.html> (<https://adafru.it/Fp->).

To do this, we'll pass the URL into `requests.get()`. We're also going to save the response from the server into a variable named `response`.

While we requested data from the server, we'd what the server responded with. Since we already saved the server's `response`, we can read it back. Luckily for us, `request` s automatically decodes the server's response into human-readable text, you can read it back by calling `response.text`.

Lastly, we'll perform a bit of cleanup by calling `response.close()`. This closes, deletes, and collect's the response's data.

```

    print("Fetching text from %s"%TEXT_URL)
    response = requests.get(TEXT_URL)
    print('- '*40)

    print("Text Response: ", response.text)
    print('- '*40)
    response.close()

```

While some servers respond with text, some respond with json-formatted data consisting of attribute–value pairs.

CircuitPython_Requests can convert a JSON-formatted response from a server into a CPython **dict** object.

We can also fetch and parse json data. We'll send a HTTP get to a url we know returns a json-formatted response (instead of text data).

Then, the code calls **response.json()** to convert the response to a CPython **dict**.

```

    print("Fetching JSON data from %s"%JSON_GET_URL)
    response = requests.get(JSON_GET_URL)
    print('- '*40)

    print("JSON Response: ", response.json())
    print('- '*40)
    response.close()

```

HTTP POST with Requests

Requests can also POST data to a server by calling the **requests.post** method, passing it a **data** value.

```

data = '31F'
print("POSTing data to {0}: {1}".format(JSON_POST_URL, data))
response = requests.post(JSON_POST_URL, data=data)
print('- '*40)

json_resp = response.json()
# Parse out the 'data' key from json_resp dict.
print("Data received from server:", json_resp['data'])
print('- '*40)
response.close()

```

You can also post json-formatted data to a server by passing **json** data into the **requests.post** method.

```

json_data = {"Date" : "July 25, 2019"}
print("POSTing data to {0}: {1}".format(JSON_POST_URL, json_data))
response = requests.post(JSON_POST_URL, json=json_data)
print('-'*40)

json_resp = response.json()
# Parse out the 'json' key from json_resp dict.
print("JSON Data received from server:", json_resp['json'])
print('-'*40)
response.close()

```

Advanced Requests Usage

Want to send custom HTTP headers, parse the response as raw bytes, or handle a response's http status code in your CircuitPython code?

We've written an example to show advanced usage of the requests module below.

```

# SPDX-FileCopyrightText: 2021 ladyada for Adafruit Industries
# SPDX-License-Identifier: MIT

import board
import busio
from digitalio import DigitalInOut
import adafruit_esp32spi.adafruit_esp32spi_socket as socket
from adafruit_esp32spi import adafruit_esp32spi
import adafruit_requests as requests

# Add a secrets.py to your filesystem that has a dictionary called secrets with
# "ssid" and
# "password" keys with your WiFi credentials. DO NOT share that file or commit it
# into Git or other
# source control.
# pylint: disable=no-name-in-module,wrong-import-order
try:
    from secrets import secrets
except ImportError:
    print("WiFi secrets are kept in secrets.py, please add them there!")
    raise

# If you are using a board with pre-defined ESP32 Pins:
esp32_cs = DigitalInOut(board.ESP_CS)
esp32_ready = DigitalInOut(board.ESP_BUSY)
esp32_reset = DigitalInOut(board.ESP_RESET)

# If you have an externally connected ESP32:
# esp32_cs = DigitalInOut(board.D9)
# esp32_ready = DigitalInOut(board.D10)
# esp32_reset = DigitalInOut(board.D5)

spi = busio.SPI(board.SCK, board.MOSI, board.MISO)
esp = adafruit_esp32spi.ESP_SPIcontrol(spi, esp32_cs, esp32_ready, esp32_reset)

print("Connecting to AP...")
while not esp.is_connected:
    try:
        esp.connect_AP(secrets["ssid"], secrets["password"])
    except RuntimeError as e:
        print("could not connect to AP, retrying: ", e)
        continue
print("Connected to", str(esp.ssid, "utf-8"), "\tRSSI:", esp.rssi)

```

```

# Initialize a requests object with a socket and esp32spi interface
socket.set_interface(esp)
requests.set_socket(socket, esp)

JSON_GET_URL = "http://httpbin.org/get"

# Define a custom header as a dict.
headers = {"user-agent": "blinka/1.0.0"}

print("Fetching JSON data from %s..." % JSON_GET_URL)
response = requests.get(JSON_GET_URL, headers=headers)
print("-" * 60)

json_data = response.json()
headers = json_data["headers"]
print("Response's Custom User-Agent Header: {0}".format(headers["User-Agent"]))
print("-" * 60)

# Read Response's HTTP status code
print("Response HTTP Status Code: ", response.status_code)
print("-" * 60)

# Close, delete and collect the response data
response.close()

```

WiFi Manager

That simplest example works but its a little finicky - you need to constantly check WiFi status and have many loops to manage connections and disconnections. For more advanced uses, we recommend using the WiFiManager object. It will wrap the connection/status/requests loop for you - reconnecting if WiFi drops, resetting the ESP32 if it gets into a bad state, etc.

Here's a more advanced example that shows the WiFi manager and also how to POST data with some extra headers:

```

# SPDX-FileCopyrightText: 2019 ladyada for Adafruit Industries
# SPDX-License-Identifier: MIT

import time
import board
import busio
from digitalio import DigitalInOut
import neopixel
from adafruit_esp32spi import adafruit_esp32spi
from adafruit_esp32spi import adafruit_esp32spi_wifimanager

print("ESP32 SPI webclient test")

# Get wifi details and more from a secrets.py file
try:
    from secrets import secrets
except ImportError:
    print("WiFi secrets are kept in secrets.py, please add them there!")
    raise

# If you are using a board with pre-defined ESP32 Pins:
esp32_cs = DigitalInOut(board.ESP_CS)

```



```

esp32_ready = DigitalInOut(board.ESP_BUSY)
esp32_reset = DigitalInOut(board.ESP_RESET)

# If you have an externally connected ESP32:
# esp32_cs = DigitalInOut(board.D9)
# esp32_ready = DigitalInOut(board.D10)
# esp32_reset = DigitalInOut(board.D5)

spi = busio.SPI(board.SCK, board.MOSI, board.MISO)
esp = adafruit_esp32spi.ESP_SPIcontrol(spi, esp32_cs, esp32_ready, esp32_reset)
"""Use below for Most Boards"""
status_light = neopixel.NeoPixel(
    board.NEOPIXEL, 1, brightness=0.2
) # Uncomment for Most Boards
"""Uncomment below for ItsyBitsy M4"""
# status_light = dotstar.DotStar(board.APA102_SCK, board.APA102_MOSI, 1,
# brightness=0.2)
# Uncomment below for an externally defined RGB LED
# import adafruit_rgbled
# from adafruit_esp32spi import PWMOut
# RED_LED = PWMOut.PWMOut(esp, 26)
# GREEN_LED = PWMOut.PWMOut(esp, 27)
# BLUE_LED = PWMOut.PWMOut(esp, 25)
# status_light = adafruit_rgbled.RGBLED(RED_LED, BLUE_LED, GREEN_LED)
wifi = adafruit_esp32spi_wifimanager.ESPSPI_WiFiManager(esp, secrets, status_light)

counter = 0

while True:
    try:
        print("Posting data...", end="")
        data = counter
        feed = "test"
        payload = {"value": data}
        response = wifi.post(
            "https://io.adafruit.com/api/v2/"
            + secrets["aio_username"]
            + "/feeds/"
            + feed
            + "/data",
            json=payload,
            headers={"X-AIO-KEY": secrets["aio_key"]},
        )
        print(response.json())
        response.close()
        counter = counter + 1
        print("OK")
    except (ValueError, RuntimeError) as e:
        print("Failed to get data, retrying\n", e)
        wifi.reset()
        continue
    response = None
    time.sleep(15)

```

You'll note here we use a secrets.py file to manage our SSID info. The wifimanager is given the ESP32 object, secrets and a neopixel for status indication.

Note, you'll need to add a some additional information to your secrets file so that the code can query the Adafruit IO API:

- aio_username
- aio_key

You can go to your adafruit.io View AIO Key link to get those two values and add them to the secrets file, which will now look something like this:

```
# This file is where you keep secret settings, passwords, and tokens!  
# If you put them in the code you risk committing that info or sharing it  
  
secrets = {  
    'ssid' : '_your_ssid_',  
    'password' : '_your_wifi_password_',  
    'timezone' : "America/Los_Angeles", # http://worldtimeapi.org/timezones  
    'aio_username' : '_your_aio_username_',  
    'aio_key' : '_your_aio_key_',  
}
```

Next, set up an Adafruit IO feed named **test**

- If you do not know how to set up a feed, [follow this page and come back when you've set up a feed named **test**](https://adafru.it/f5k) . (<https://adafru.it/f5k>)

We can then have a simple loop for posting data to Adafruit IO without having to deal with connecting or initializing the hardware!

Take a look at your test feed on Adafruit.io and you'll see the value increase each time the CircuitPython board posts data to it!



CircuitPython BLE

CircuitPython BLE UART Example

It's easy to use Adafruit AirLift ESP32 co-processor boards for Bluetooth Low Energy (BLE) with CircuitPython. When you reset the ESP32, you can put it in WiFi mode (the default), or in BLE mode; you cannot use both modes simultaneously.

Here's a simple example of using BLE to connect CircuitPython with the Bluefruit Connect app. Use CircuitPython 6.0.0 or later.

Note: Don't confuse the ESP32 with the ESP32-S2, which is a different module with a similar name. The ESP32-S2 does not support BLE.

Currently the AirLift support for CircuitPython only provides BLE peripheral support. BLE central is under development. So you cannot connect to BLE devices like Heart Rate monitors, etc., but you can act as a BLE peripheral yourself.

Adafruit AirLift ESP32 Breakout Wiring

If you have an Adafruit AirLift ESP32 Breakout board, you'll need to wire it to your microcontroller board. The following example shows it wired to a Feather M4. You can choose different pins for GPIO0, BUSY, and !RST, but the pin choices below correspond to several other boards, for consistency. If you do change the pins, keeping the TX and RX pins the same is a good idea. If you choose different pins, you'll need to edit the example program below.

Update the AirLift Firmware

You will need to update the AirLift's firmware to at least version 1.7.1. Previous versions of the AirLift firmware do not support BLE.

Follow the instructions in the guide below, and come back to this page when you've upgraded the AirLift's firmware:

Upgrade External ESP32 AirLift Firmware

<https://adafru.it/RdC>

Ensure the AirLift firmware is version 1.7.1 or higher for BLE to work.

Install CircuitPython Libraries

Make sure you are running the [latest version of Adafruit CircuitPython \(https://adafru.it/Amd\)](https://adafru.it/Amd) for your board; you'll need 6.0.0 or later.

Next you'll need to install the necessary libraries to use the hardware and BLE. Carefully follow the steps to find and install these libraries from [Adafruit's CircuitPython library bundle \(https://adafru.it/uap\)](https://adafru.it/uap). Our CircuitPython starter guide has [a great page on how to use the library bundle \(https://adafru.it/ABU\)](https://adafru.it/ABU).

Install these libraries from the bundle:

- adafruit_airlift
- adafruit_ble

Before continuing make sure your board's lib folder or root filesystem has the adafruit_airlift and adafruit_ble folders copied over.

Install the Adafruit Bluefruit LE Connect App

The Adafruit Bluefruit LE Connect iOS and Android apps allow you to connect to BLE peripherals that provide a over-the-air "UART" service. Follow the instructions in the [Bluefruit LE Connect Guide \(https://adafru.it/Eg5\)](https://adafru.it/Eg5) to download and install the app on your phone or tablet.

Copy and Adjust the Example Program

Copy the program below to the file code.py on CIRCUITPY on your board.

TAKE NOTE: Adjust the program as needed to suit the AirLift board you have. Comment and uncomment lines 12-39 below as necessary.

```

import board

from adafruit_ble import BLERadio
from adafruit_ble.advertising.standard import ProvideServicesAdvertisement
from adafruit_ble.services.nordic import UARTService

from adafruit_airlift.esp32 import ESP32

# If you are using a Metro M4 Airlift Lite, PyPortal,
# or MatrixPortal, you can use the default pin settings.
# Leave this DEFAULT line uncommented.
esp32 = ESP32() # DEFAULT

# If you are using CircuitPython 6.0.0 or earlier,
# on PyPortal and PyPortal Titano only, use the pin settings
# below. Comment out the DEFAULT line above and uncomment
# the line below. For CircuitPython 6.1.0, the pin names
# have changed for these boards, and the DEFAULT line
# above is correct.
# esp32 = ESP32(tx=board.TX, rx=board.RX)

# If you are using an AirLift FeatherWing or AirLift Bitsy Add-On,
# use the pin settings below. Comment out the DEFAULT line above
# and uncomment the lines below.
# If you are using an AirLift Breakout, check that these
# choices match the wiring to your microcontroller board,
# or change them as appropriate.
# esp32 = ESP32(
#     reset=board.D12,
#     gpio0=board.D10,
#     busy=board.D11,
#     chip_select=board.D13,
#     tx=board.TX,
#     rx=board.RX,
# )

# If you are using an AirLift Shield,
# use the pin settings below. Comment out the DEFAULT line above
# and uncomment the lines below.
# esp32 = ESP32(
#     reset=board.D5,
#     gpio0=board.D6,
#     busy=board.D7,
#     chip_select=board.D10,
#     tx=board.TX,
#     rx=board.RX,
# )

adapter = esp32.start_bluetooth()

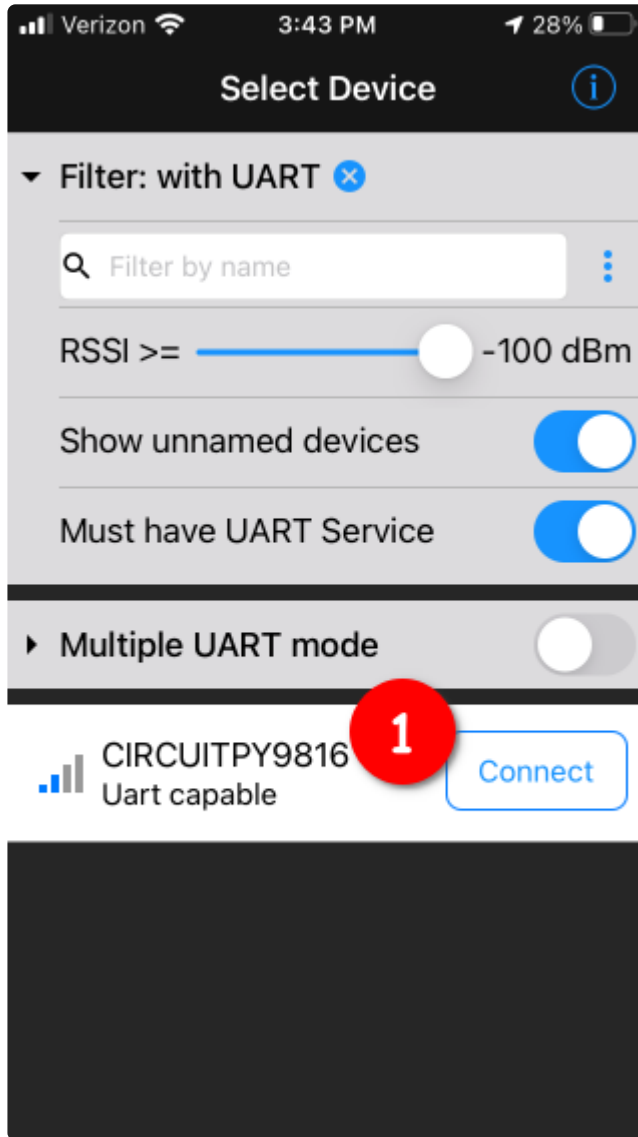
ble = BLERadio(adapter)
uart = UARTService()
advertisement = ProvideServicesAdvertisement(uart)

while True:
    ble.start_advertising(advertisement)
    print("waiting to connect")
    while not ble.connected:
        pass
    print("connected: trying to read input")
    while ble.connected:
        # Returns b'' if nothing was read.
        one_byte = uart.read(1)
        if one_byte:
            print(one_byte)
            uart.write(one_byte)

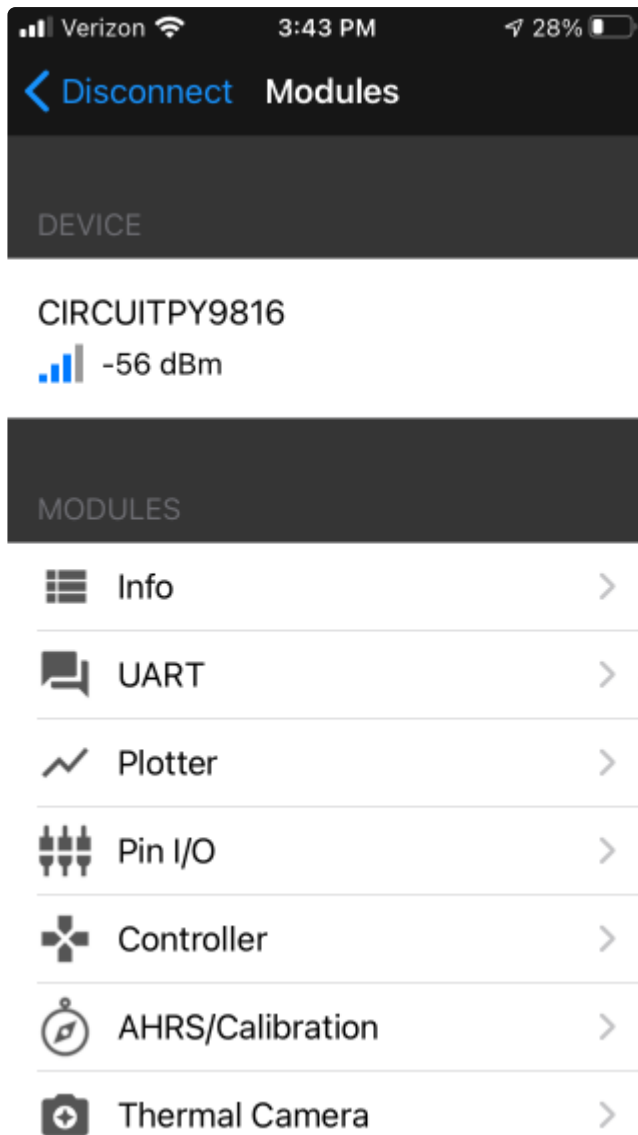
```

Talk to the AirLift via the Bluefruit LE Connect App

Start the Bluefruit LE Connect App on your phone or tablet. You should see a CIRCUITPY device available to connect to. Tap the Connect button (1):



You'll then see a list of Bluefruit Connect functions ("modules"). Choose the UART module (2):



On the UART module page, you can type a string and press Send (3). You'll see that string entered, and then see it echoed back (echoing is in gray).

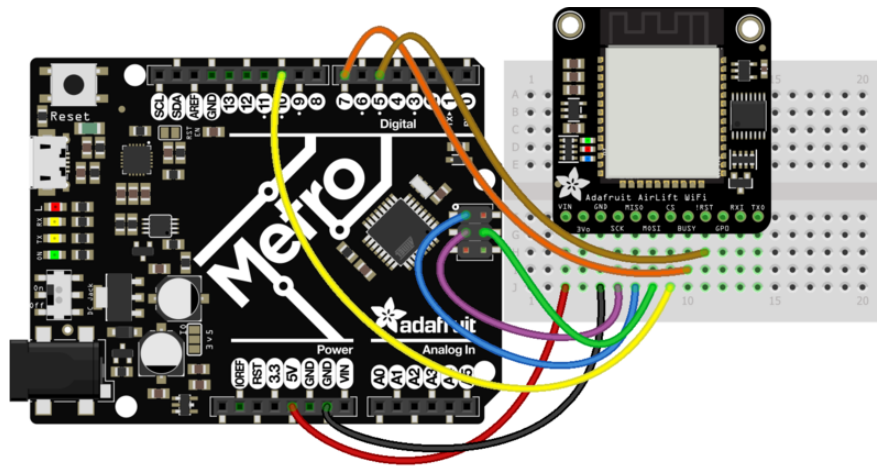


Arduino WiFi

You can use the AirLift with Arduino. Unlike CircuitPython, it work work with just about any Arduino chip, even a classic Arduino UNO. However, if you want to use libraries like ArduinoJSON or add sensors and SD card, you'll really want an ATSAMd21 (Cortex M0) or ATSAMd51 (Cortex M4), both of which have plenty of RAM.

Arduino Wiring

We'll show wiring to the hardware SPI pins, since the library does not support software SPI at all. You will need female-to-male header wires to get to these pins



fritzing

Connect:

- AirLift VIN to 5V power (even if you are on a 3V microcontroller, you'll need the current available from the 5V power pin)
- AirLift GND to GND
- AirLift SCK to the 6-pin SPI header SPI SCK
- AirLift MOSI to the 6-pin SPI header SPI MOSI
- AirLift MISO to the 6-pin SPI header SPI MISO
- AirLift CS to digital 10 (you can change this later)
- AirLift Busy to digital 7 (you can change this later)
- AirLift Reset to digital 5 (you can change this later)

Library Install

We're using a variant of the Arduino Wi-Fi NINA library, which is amazing and written by the Arduino team! The official WiFi101 library won't work because it doesn't support the ability to change the pins.

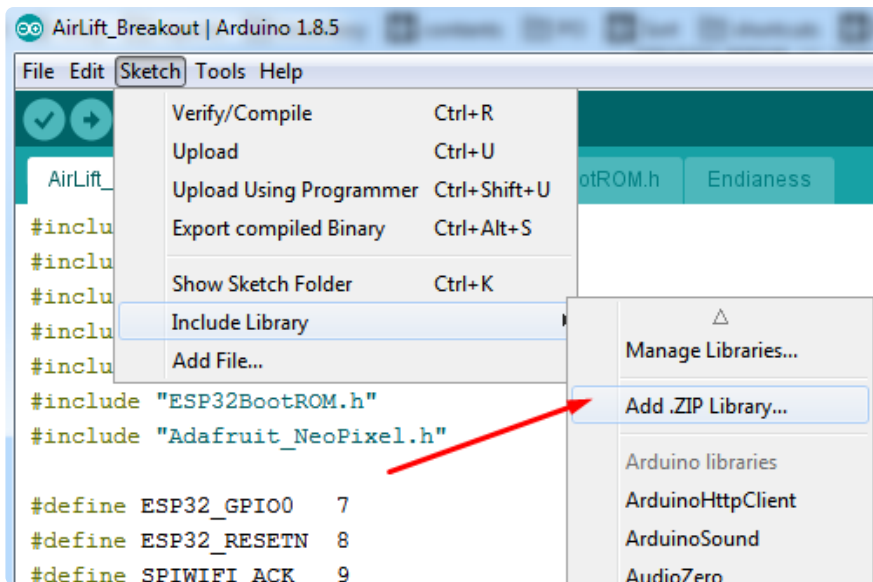
So! We made a fork that you can install.

Click here to download the library:

Download Adafruit's version of
WiFiNINA

<https://adafru.it/Evm>

Within the Arduino IDE, select Install library from ZIP...

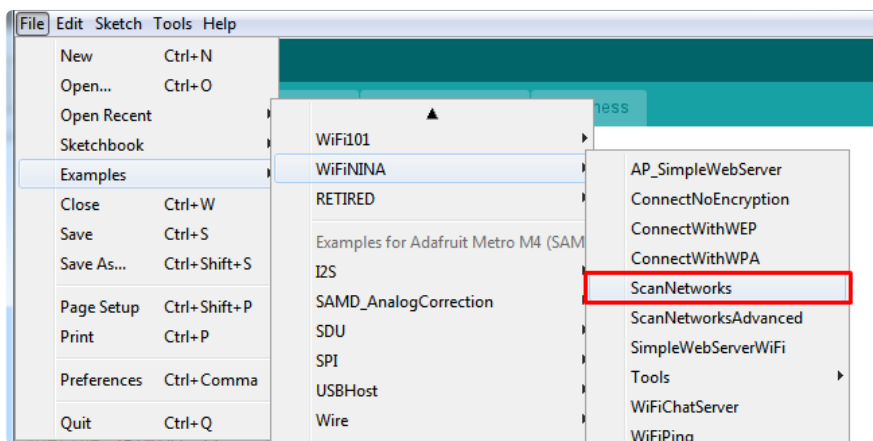


And select the zip you just downloaded.

First Test

OK now you have it wired and library installed, time to test it out!

Lets start by scanning the local networks. Load up the ScanNetworks example



At the top you'll see a section where the GPIO pins are defined

```
// Configure the pins used for the ESP32 connection
#define SPIWIFI      SPI    // The SPI port
#define SPIWIFI_SS   10    // Chip select pin
#define SPIWIFI_ACK  7     // a.k.a BUSY or READY pin
#define ESP32_RESETN 5     // Reset pin
#define ESP32_GPIO0  -1    // Not connected
```

If you don't see this, you may have the wrong WiFiNINA library installed. Uninstall it and re-install the Adafruit one as above.

Compile and upload to your board wired up to the AirLift

```
WiFi Scanning test
MAC: C4:4F:33:0E:B0:BD
Scanning available networks...
** Scan Networks **
number of available networks:10
0) Adafruit      Signal: -56 dBm Encryption: WPA2
1) Consulate Guest  Signal: -59 dBm Encryption: WPA2
2) consulatewireless  Signal: -60 dBm Encryption: WPA2
3) Adafruit      Signal: -66 dBm Encryption: WPA2
4) consulatewireless  Signal: -67 dBm Encryption: WPA2
5) Consulate Guest  Signal: -69 dBm Encryption: WPA2
6) Adafruit      Signal: -69 dBm Encryption: WPA2
7) Consulate Guest  Signal: -71 dBm Encryption: WPA2
8) consulatewireless  Signal: -72 dBm Encryption: WPA2
9) ESP_88EF6C   Signal: -75 dBm Encryption: None
```

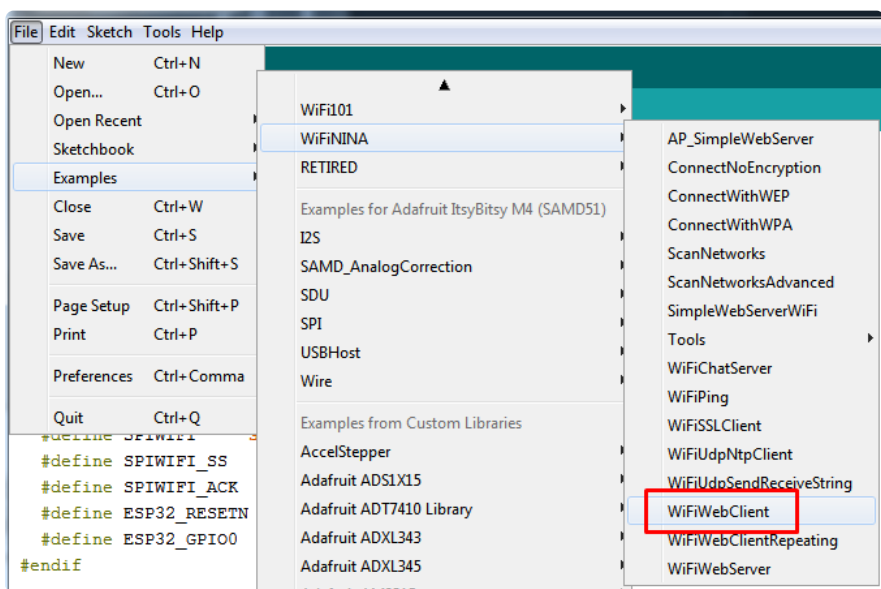
If you don't even get the MAC address printed out, check your wiring.

If you get the MAC address but cannot scan any networks, check your power supply. You need a solid 3-5VDC into Vin in order for the ESP32 not to brown out.

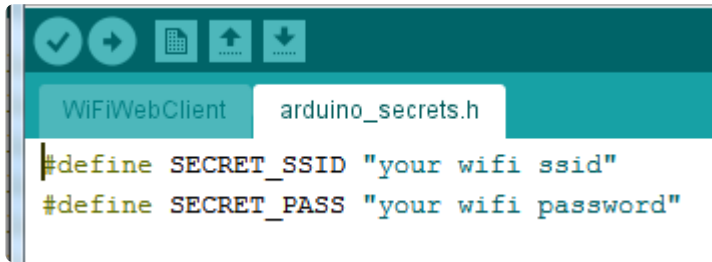
WiFi Connection Test

Now that you have your wiring checked, time to connect to the Internet!

Open up the WiFiWebClient example



Open up the secondary tab, `arduino_secrets.h`. This is where you will store private data like the SSID/password to your network.



```
WiFiWebClient  arduino_secrets.h
#define SECRET_SSID "your wifi ssid"
#define SECRET_PASS "your wifi password"
```

You must change these string values before updating to your board!

After you've set it correctly, upload and check the serial monitor. You should see the following. If not, go back, check wiring, power and your SSID/password

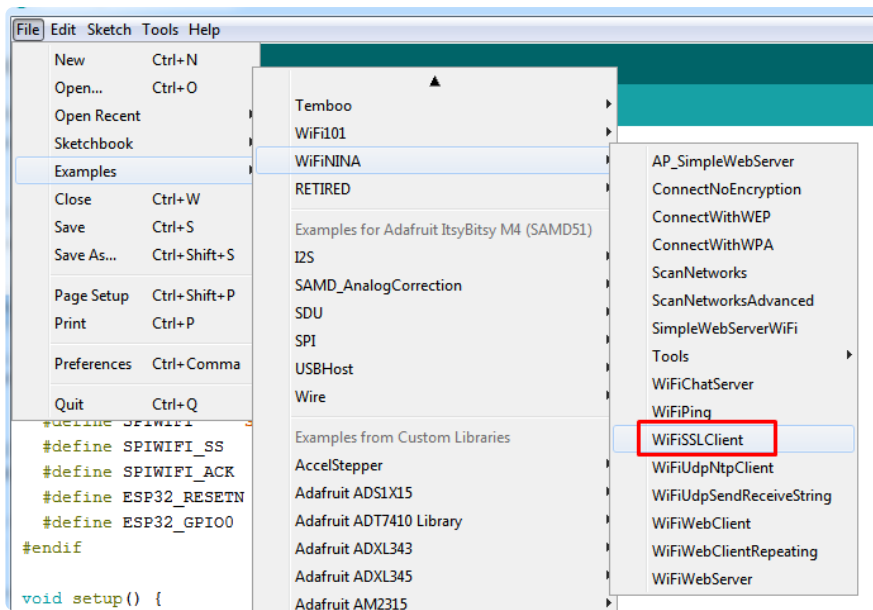
```
Found firmware 1.3.0
Attempting to connect to SSID: Adafruit
Connected to wifi
SSID: Adafruit
IP Address: 10.0.1.179
signal strength (RSSI):-44 dBm

Starting connection to server...
connected to server
HTTP/1.1 200 OK
Server: nginx/1.10.3 (Ubuntu)
Date: Wed, 10 Apr 2019 20:55:51 GMT
Content-Type: text/html
Content-Length: 73
Last-Modified: Thu, 16 Feb 2017 17:42:29 GMT
Connection: close
ETag: "58a5e485-49"
Accept-Ranges: bytes

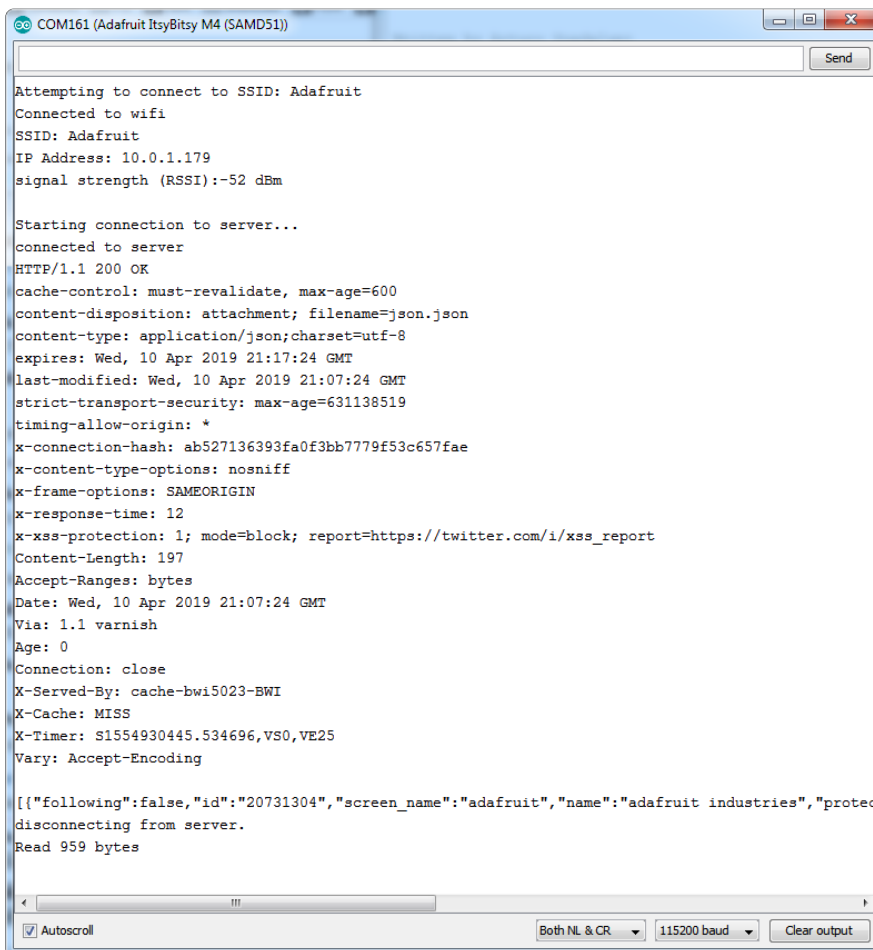
This is a test of the CC3000 module!
If you can read this, its working :)
disconnecting from server.
```

Secure Connection Example

Many servers today do not allow non-SSL connectivity. Lucky for you the ESP32 has a great TLS/SSL stack so you can have that all taken care of for you. Here's an example of a secure WiFi connection:



Note we use `WiFiSSLClient` client; instead of `WiFiClient` client; to require an SSL connection!

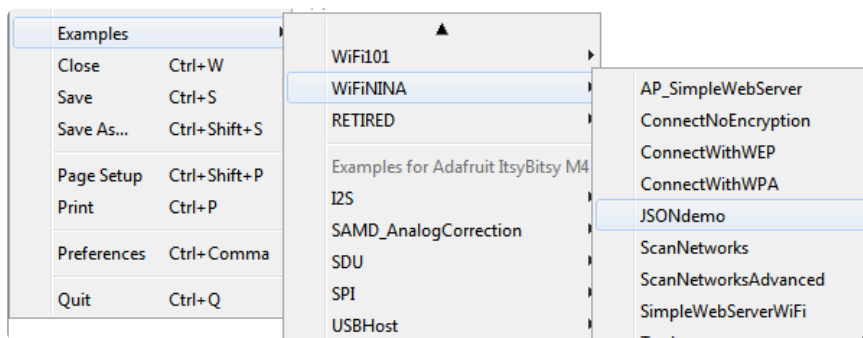


JSON Parsing Demo

This example is a little more advanced - many sites will have API's that give you JSON data. We'll use [ArduinoJSON](https://adafru.it/Evn) (https://adafru.it/Evn) to convert that to a format we can use and then display that data on the serial port (which can then be re-directed to a display of some sort)

First up, [use the Library manager to install ArduinoJSON](https://adafru.it/Evo) (https://adafru.it/Evo).

Then load the example JSONdemo



By default it will connect to the Twitter banner image API, parse the username and followers and display them.

```
Attempting to connect to SSID: Adafruit
Connected to wifi
SSID: Adafruit
IP Address: 10.0.1.179
signal strength (RSSI):-51 dBm

Starting connection to server...
connected to server
Response:
Twitter username: adafruit
Twitter followers: 159265
```

Adapting Other Examples

Once you've got it connecting to the Internet you can check out the other examples. The only change you'll want to make is at the top of the sketches, add:

```
// Configure the pins used for the ESP32 connection
#if !defined(SPIWIFI_SS) // if the wifi definition isnt in the board variant
// Don't change the names of these #define's! they match the variant ones
```

```
#define SPIWIFI      SPI
#define SPIWIFI_SS  10 // Chip select pin
#define SPIWIFI_ACK  7 // a.k.a BUSY or READY pin
#define ESP32_RESETN 5 // Reset pin
#define ESP32_GPI00 -1 // Not connected
#endif
```

And then before you check the `status()` of the module, call the function `WiFi.setPins(SPIWIFI_SS, SPIWIFI_ACK, ESP32_RESETN, ESP32_GPI00, &SPIWIFI);`

```
// check for the WiFi module:
WiFi.setPins(SPIWIFI_SS, SPIWIFI_ACK, ESP32_RESETN, ESP32_GPI00, &SPIWIFI);
while (WiFi.status() == WL_NO_MODULE) {
  Serial.println("Communication with WiFi module failed!");
  // don't continue
  delay(1000);
}
```

Of course you can adjust the pins and SPI port if you like!

Upgrade External ESP32 Airlift Firmware

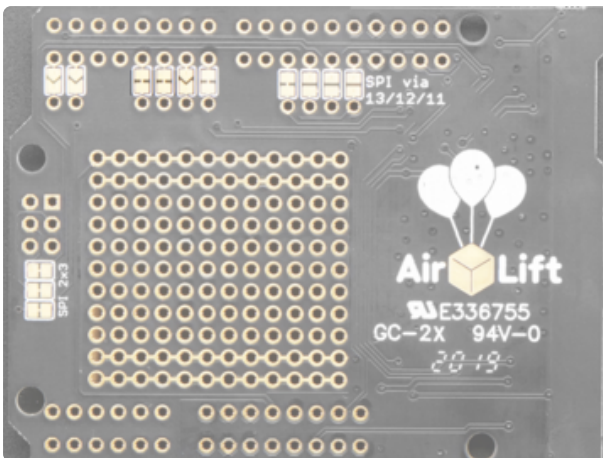
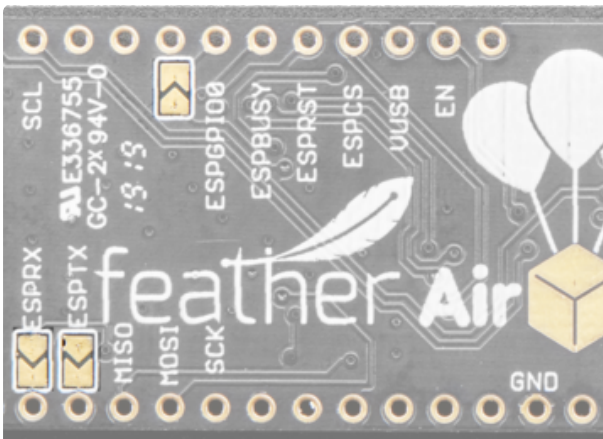
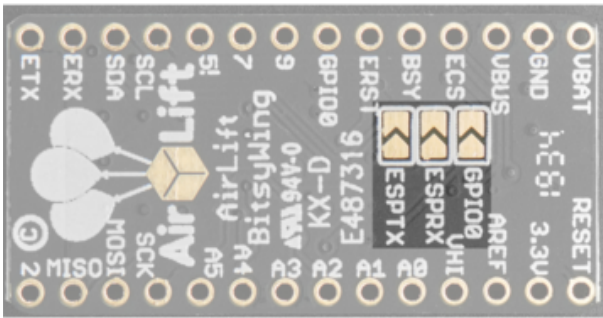
To support BLE on the ESP32 AirLift, you'll need NINA_W102-1.7.1.bin or later.

External AirLift FeatherWing, Shield, or ItsyWing

External AirLift boards have three optional ESP32 control pins which are not connected by default:

- ESPGPIO0
- ESPRX
- ESPTX

Make sure to solder each of these pads together. You will not be able to upload firmware to your ESP32 if they are not connected.



Upload Serial Passthrough code for Feather or ItsyBitsy

First, back up any code and files you have on your CIRCUITPY drive. It will be overwritten by the code you're going to upload to your board. You should not end up losing any files on the QSPI flash, but it's a good idea to back them up anyways.

This section is only for an AirLift FeatherWing with a Feather M4, or an AirLift BitsyWing with an ItsyBitsy M4. If you are using a different hardware combination - scroll down to the "External AirLift Breakout" section.

Download the UF2 for your board to your Desktop.

Feather M0/M4 Passthrough UF2

<https://adafru.it/OYF>

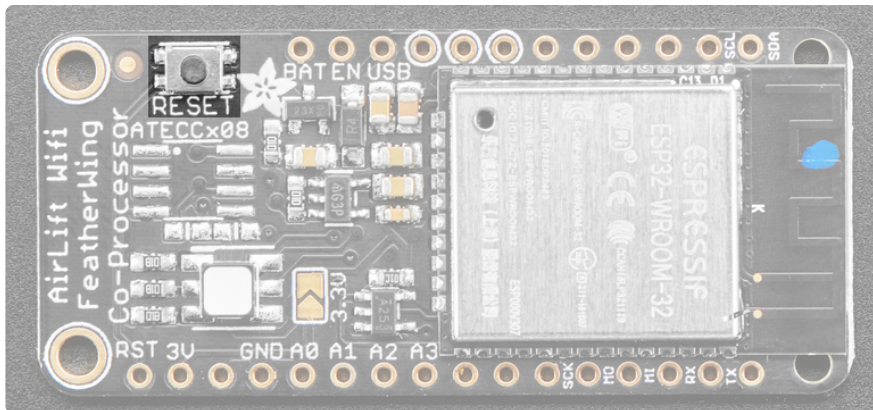
Feather NRF52840 Passthrough UF2

<https://adafru.it/PTE>

Itsybitsy Passthrough UF2

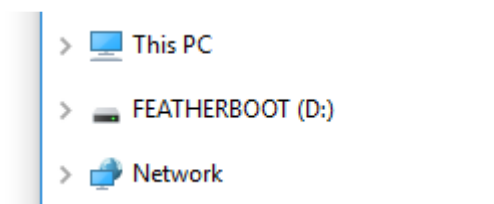
<https://adafru.it/IEK>

Find the reset button on your board. It's a small, black button, and on most of the boards, it will be the only button available.

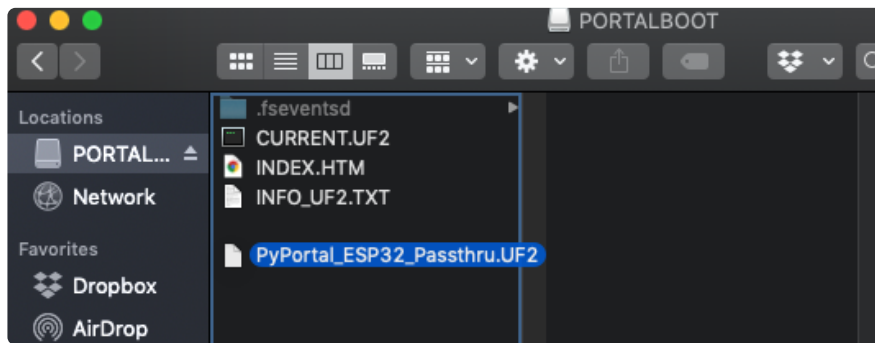


Tap this button twice to enter the bootloader. If it doesn't work on the first try, don't be discouraged. The rhythm of the taps needs to be correct and sometimes it takes a few tries.

Once successful, the RGB LED on the board will flash red and then stay green. A new drive will show up on your computer. The drive will be called **boardnameBOOT** where **boardname** is a reference to your specific board. For example, a Feather will have **FEATHERBOOT** and a Trinket will have **TRINKETBOOT** et c. Going forward we'll just call the boot drive **BOOT**



The board is now in bootloader mode. Now find the UF2 file you downloaded. Drag that file to the **BOOT** drive on your computer in your operating system file manager/finder.



The lights should flash again, **BOOT** will disappear. Your board should re-enumerate USB and appear as a COM or Serial port on your computer. Make a note of the serial port by checking the Device Manager (Windows) or typing **ls /dev/cu*** or **/dev/tty*** (Mac or Linux) in a terminal.

If your board is listed in the terminal, proceed to the Uploading nina-fw with esptool section of this guide.

```
$ ls /dev/cu.*  
/dev/cu.Bluetooth-Incoming-Port /dev/cu.usbmodem1432201
```

External AirLift Breakout

You'll be turning your Arduino board into a USB to Serial converter. To do this, you'll need a special Arduino sketch named SerialESPPassthrough.ino and an Arduino-compatible board with Native USB support such as the Adafruit Metro M4.

You will also need to make the following connections between the board and the AirLift Breakout:

- Board Pin 12 to ESP32_ResetN
- Board Pin 10 to ESP32 GPIO0
- Board TX to RXI
- Board RX to TXO

Click Download: Project ZIP to download the code below.

```
// SPDX-FileCopyrightText: 2018 Arduino SA
```



```

//
// SPDX-License-Identifier: GPL-2.1-or-later
/*
SerialNINAPassthrough - Use esptool to flash the ESP32 module
For use with PyPortal, Metro M4 WiFi...

Copyright (c) 2018 Arduino SA. All rights reserved.

This library is free software; you can redistribute it and/or
modify it under the terms of the GNU Lesser General Public
License as published by the Free Software Foundation; either
version 2.1 of the License, or (at your option) any later version.

This library is distributed in the hope that it will be useful,
but WITHOUT ANY WARRANTY; without even the implied warranty of
MERCHANTABILITY or FITNESS FOR A PARTICULAR PURPOSE. See the GNU
Lesser General Public License for more details.

You should have received a copy of the GNU Lesser General Public
License along with this library; if not, write to the Free Software
Foundation, Inc., 51 Franklin St, Fifth Floor, Boston, MA 02110-1301 USA
*/

#include <Adafruit_NeoPixel.h>

unsigned long baud = 115200;

#if defined(ADAFRUIT_FEATHER_M4_EXPRESS) || \
    defined(ADAFRUIT_FEATHER_M0_EXPRESS) || \
    defined(ARDUINO_AVR_FEATHER32U4) || \
    defined(ARDUINO_NRF52840_FEATHER) || \
    defined(ADAFRUIT_ITSYBITSY_M0) || \
    defined(ADAFRUIT_ITSYBITSY_M4_EXPRESS) || \
    defined(ARDUINO_AVR_ITSYBITSY32U4_3V) || \
    defined(ARDUINO_NRF52_ITSYBITSY)
// Configure the pins used for the ESP32 connection

#define SerialESP32 Serial1
#define SPIWIFI SPI // The SPI port
#define SPIWIFI_SS 13 // Chip select pin
#define ESP32_RESETN 12 // Reset pin
#define SPIWIFI_ACK 11 // a.k.a BUSY or READY pin
#define ESP32_GPI00 10
#define NEOPIXEL_PIN 8
#elif defined(ARDUINO_AVR_FEATHER328P)
#define SerialESP32 Serial1
#define SPIWIFI SPI // The SPI port
#define SPIWIFI_SS 4 // Chip select pin
#define ESP32_RESETN 3 // Reset pin
#define SPIWIFI_ACK 2 // a.k.a BUSY or READY pin
#define ESP32_GPI00 -1
#define NEOPIXEL_PIN 8
#elif defined(TEENSYDUINO)
#define SerialESP32 Serial1
#define SPIWIFI SPI // The SPI port
#define SPIWIFI_SS 5 // Chip select pin
#define ESP32_RESETN 6 // Reset pin
#define SPIWIFI_ACK 9 // a.k.a BUSY or READY pin
#define ESP32_GPI00 -1
#define NEOPIXEL_PIN 8
#elif defined(ARDUINO_NRF52832_FEATHER )
#define SerialESP32 Serial1
#define SPIWIFI SPI // The SPI port
#define SPIWIFI_SS 16 // Chip select pin
#define ESP32_RESETN 15 // Reset pin
#define SPIWIFI_ACK 7 // a.k.a BUSY or READY pin
#define ESP32_GPI00 -1

```

```

#define NEOPIXEL_PIN 8
#elif !defined(SPIWIFI_SS) // if the wifi definition isnt in the board variant
// Don't change the names of these #define's! they match the variant ones

#define SerialESP32 Serial1
#define SPIWIFI SPI
#define SPIWIFI_SS 10 // Chip select pin
#define SPIWIFI_ACK 7 // a.k.a BUSY or READY pin
#define ESP32_RESETN 5 // Reset pin
#define ESP32_GPI00 -1 // Not connected
#define NEOPIXEL_PIN 8
#endif

#if defined(ADAFRUIT_PYPORTAL)
#define PIN_NEOPixel 2
#elif defined(ADAFRUIT_METRO_M4_AIRLIFT_LITE)
#define PIN_NEOPixel 40
#endif

Adafruit_NeoPixel pixel = Adafruit_NeoPixel(1, PIN_NEOPixel, NEO_GRB + NEO_KHZ800);

void setup() {
  Serial.begin(baud);
  pixel.begin();
  pixel.setPixelColor(0, 10, 10, 10); pixel.show();

  while (!Serial);
  pixel.setPixelColor(0, 50, 50, 50); pixel.show();

  delay(100);
  SerialESP32.begin(baud);

  pinMode(SPIWIFI_SS, OUTPUT);
  pinMode(ESP32_GPI00, OUTPUT);
  pinMode(ESP32_RESETN, OUTPUT);

  // manually put the ESP32 in upload mode

  digitalWrite(ESP32_GPI00, LOW);

  digitalWrite(ESP32_RESETN, LOW);
  delay(100);
  digitalWrite(ESP32_RESETN, HIGH);
  pixel.setPixelColor(0, 20, 20, 0); pixel.show();
  delay(100);
}

void loop() {
  while (Serial.available()) {
    pixel.setPixelColor(0, 10, 0, 0); pixel.show();
    SerialESP32.write(Serial.read());
  }

  while (SerialESP32.available()) {
    pixel.setPixelColor(0, 0, 0, 10); pixel.show();
    Serial.write(SerialESP32.read());
  }
}

```

Code Usage

Unzip the file, and open the SerialESPPassthrough.ino file in the Arduino IDE.

If you're using the AirLift FeatherWing, AirLift Shield or AirLift Bitsy Add-On, use the PassThrough UF2 instructions above

If you have an AirLift Breakout (or are manually wiring up any of the boards above), change the following pin definitions in the sketch to match your wiring:

```
#elif !defined(SPIWIFI_SS) // if the wifi definition isnt in the board variant
// Don't change the names of these #define's! they match the variant ones
#define SerialESP32 Serial1
#define SPIWIFI SPI
#define SPIWIFI_SS 10 // Chip select pin
#define SPIWIFI_ACK 7 // a.k.a BUSY or READY pin
#define ESP32_RESETN 5 // Reset pin
#define ESP32_GPI00 -1 // Not connected
#define NEOPIXEL_PIN 8
#endif
```

Using the Arduino IDE, upload the code to your board (Sketch->Upload).

After uploading, the board should enumerate USB and appear as a COM or Serial port on your computer.

Make a note of the serial port by checking the Device Manager (Windows) or typing in `ls /dev/cu*` or `/dev/tty*` (Mac or Linux) in a terminal



```
$ ls /dev/cu.*
/dev/cu.Bluetooth-Incoming-Port /dev/cu.usbmodem1432201
```

This guide assumes you have Python3 installed. If you have not installed it, navigate to the Python downloads page (<https://www.python.org/downloads>) and install the latest release.

Install esptool.py

Esptool is an application which can communicate with the ROM [bootloader](https://adafru.it/LKe) (<https://adafru.it/LKe>) in Espressif chips.

To install esptool, run the following in your terminal:

```
pip3 install esptool
```

```
~ pip3 install esptool
Collecting esptool
  Using cached esptool-2.8.tar.gz (84 kB)
Requirement already satisfied: pyserial>=3.0 in ./pyenv/versions/3.7.2/lib/python3.7/site-packages (from esptool) (3.4)
Collecting pyaes
  Using cached pyaes-1.6.1.tar.gz (28 kB)
Collecting ecdsa
  Using cached ecdsa-0.15-py2.py3-none-any.whl (100 kB)
Requirement already satisfied: six>=1.9.0 in ./pyenv/versions/3.7.2/lib/python3.7/site-packages (from ecdsa->esptool) (1.14.0)
Using legacy setup.py install for esptool, since package 'wheel' is not installed.
Using legacy setup.py install for pyaes, since package 'wheel' is not installed.
Installing collected packages: pyaes, ecdsa, esptool
  Running setup.py install for pyaes ... done
  Running setup.py install for esptool ... done
Successfully installed ecdsa-0.15 esptool-2.8 pyaes-1.6.1
```

Burning nina-fw with esptool

Click the link below to download the latest nina-fw .bin file. Unzip it and save the .bin file to your desktop.

Latest nina-fw .bin file

<https://adafru.it/G3D>

If you're using macOS or Linux - run the following command, replacing `/dev/ttyACM0` with the serial port of your board and `NINA_W102-1.6.0` with the binary file you're flashing to the ESP32.

```
esptool.py --port /dev/ttyACM0 --before no_reset --baud 115200
write_flash 0 NINA_W102-1.6.0.bin
```

If you're using Windows - run the following command, replacing `COM7` with the serial port of your board and `NINA_W102-1.6.0` with the binary file you're flashing to the ESP32

```
esptool.py --port COM7 --before no_reset --baud 115200 write_flash 0
NINA_W102-1.6.0.bin
```

The command should detect the ESP32 and will take a minute or two to upload the firmware.

If ESPTool doesn't detect the ESP32, make sure you've uploaded the correct .UF2 file to the bootloader and are using the correct serial port.

```
$ esptool.py --port /dev/cu.usbmodem1432201 --before no_reset --baud 115200 write_flash 0 NINA_W102-1.3.0.bin
esptool.py v2.7
Serial port /dev/cu.usbmodem1432201
Connecting.....
Detecting chip type... ESP32
Chip is ESP32D0WDQ6 (revision 1)
Features: WiFi, BT, Dual Core, 240MHz, VRef calibration in efuse, Coding Scheme None
Crystal is 40MHz
MAC: c4:4f:33:0d:5c:19
Uploading stub...
Running stub...
Stub running...
Configuring flash size...
Auto-detected Flash size: 4MB
Compressed 1154048 bytes to 622216...
Wrote 1154048 bytes (622216 compressed) at 0x00000000 in 204.7 seconds (effective 45.1 kbit/s)...
Hash of data verified.
Leaving...
Hard resetting via RTS pin...
```

Once the firmware is fully uploaded, the ESP32 will reset.

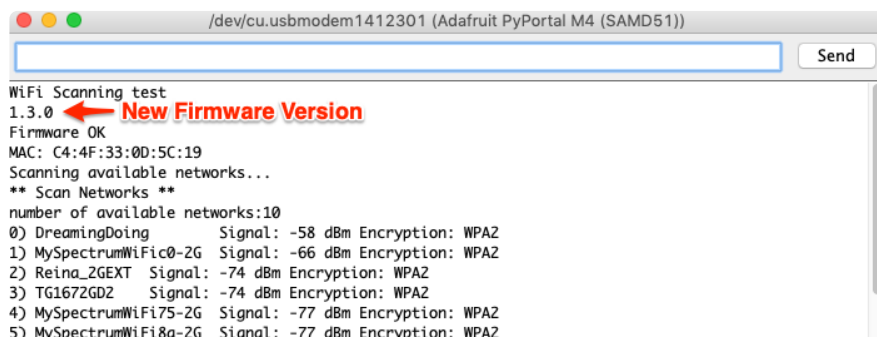
Verifying the Upgraded Firmware Version

To verify everything is working correctly, we'll load up either an Arduino sketch or CircuitPython code. At this point, you must desolder the connections between the Optional ESP32 control pins you made earlier using a [solder sucker](https://adafru.it/FWk) or a bit of [solder wick](https://adafru.it/yrC).

Arduino

If you were previously using your ESP32 with Arduino, you should load up an Arduino sketch to verify everything is working properly and the version of the nina-fw correlates with the version the sketch reads.

Open up File->Examples->WiFiNINA->ScanNetworks and upload the sketch. Then, open the Serial Monitor. You should see the firmware version printed out to the serial monitor.



CircuitPython

If you were previously using your ESP32 project with CircuitPython, you'll need to first reinstall CircuitPython firmware (UF2) for your board. The QSPI flash should have retained its contents. If you don't see anything on the **CIRCUITPY** volume, copy files from the backup you made earlier to **CIRCUITPY**.

To verify the new ESP32 WiFi firmware version is correct, [follow the Connect to WiFi step in this guide \(https://adafru.it/Eao\)](https://adafru.it/Eao) and come back here when you've successfully ran the code. The REPL output should display the firmware version you flashed.

```
code.py output:  
ESP32 SPI webclient test  
ESP32 found and in idle mode  
Firmware vers. bytearray(b'1.3.0\x00')  
MAC addr: ['0x19', '0x5c', '0xd', '0x33', '0x4f', '0xc4']
```

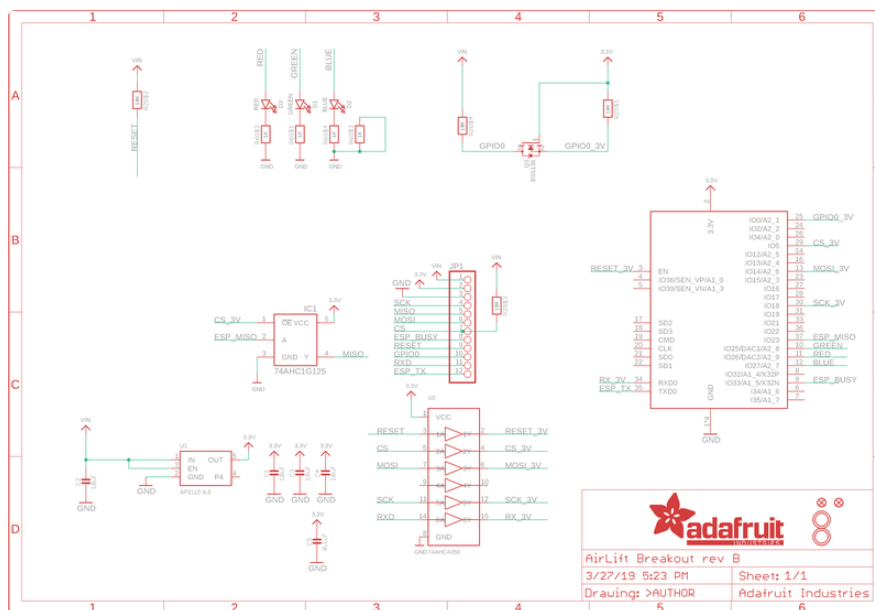


Downloads

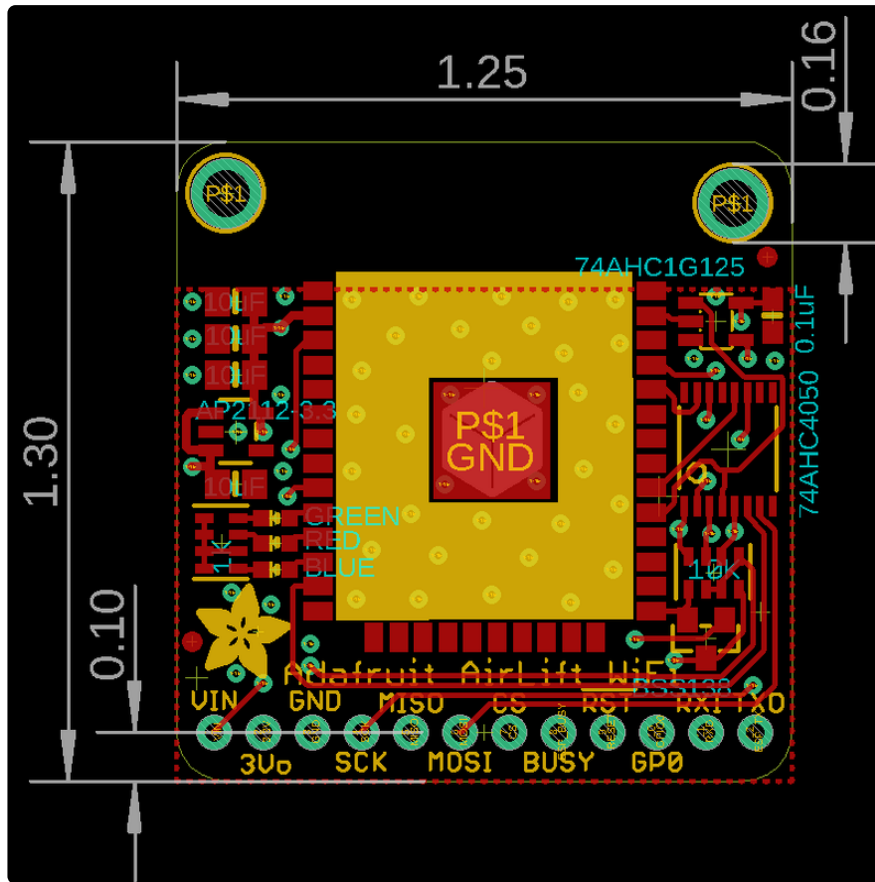
Files

- [EagleCAD PCB Files on GitHub \(https://adafru.it/Evh\)](https://adafru.it/Evh)
- [Fritzing Object in the Adafruit Fritzing Library \(https://adafru.it/Evi\)](https://adafru.it/Evi)

Schematic



Fab Print



X-ON Electronics

Largest Supplier of Electrical and Electronic Components

Click to view similar products for [WiFi Development Tools - 802.11 category](#):

Click to view products by [Adafruit manufacturer](#):

Other Similar products are found below :

[YSAEWIFI-1](#) [SKY65981-11EK1](#) [QPF7221PCK-01](#) [SIMSA915C-Cloud-DKL](#) [SIMSA433C-Cloud-DKL](#) [ISM43903-R48-EVB-E](#)
[QPF4206BEVB01](#) [RN-G2SDK](#) [SKY85734-11EK1](#) [SKY85735-11EK1](#) [ENW49D01AZKF](#) [ESP-LAUNCHER](#) [MIKROE-2336](#)
[EVAL_PAN1760EMK](#) [3210](#) [EVAL_PAN1026EMK](#) [ATWINC1500-XPRO](#) [2471](#) [DM990001](#) [WRL-13711](#) [2999](#) [ATWILC3000-SHLD](#)
[DFR0321](#) [TEL0118](#) [3213](#) [DFR0489](#) [WRL-13804](#) [DEV-13907](#) [UP-3GHAT-A20-0001](#) [3405](#) [TEL0078](#) [2680](#) [2702](#) [2821](#) [3044](#) [3606](#) [3653](#)
[4000](#) [4172](#) [4178](#) [4201](#) [4285](#) [4289](#) [CS-ANAVI-25](#) [CS-ANAVI-26](#) [CS-ANAVI-23](#) [CS-ANAVI-24](#) [CS-ANAVI-28](#) [CS-ANAVI-29](#) [CS-ANAVI-30](#)