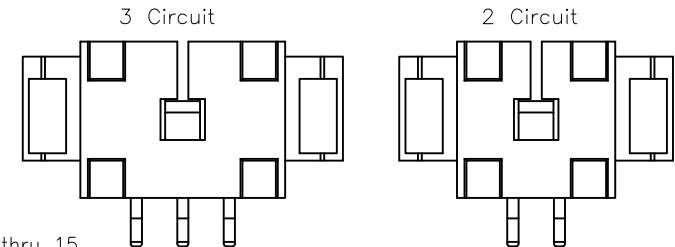
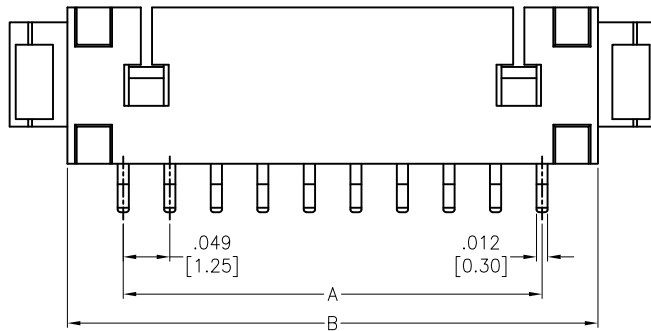
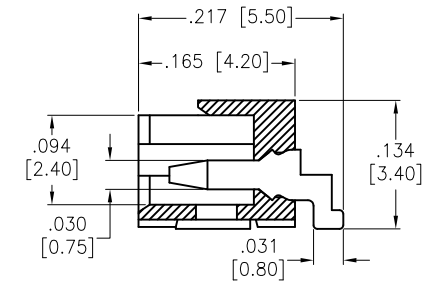
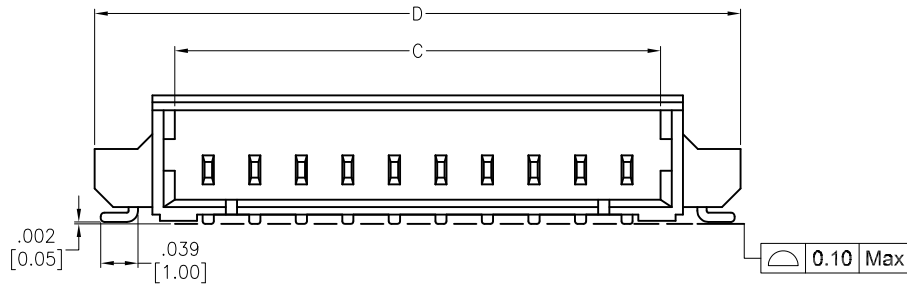
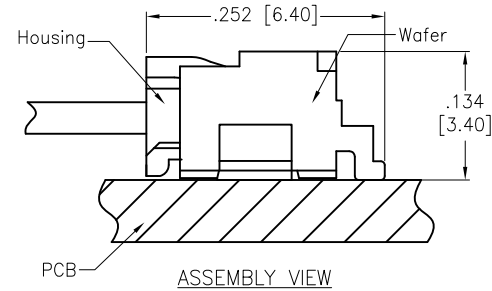
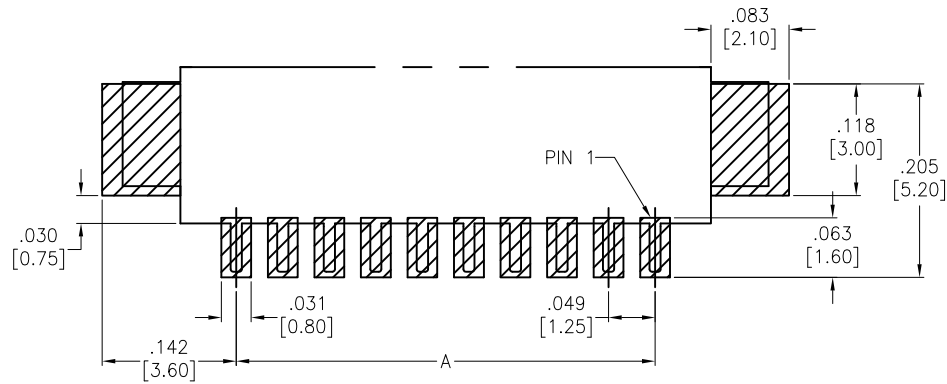


APPROVED: \_\_\_\_\_  
 DATE: \_\_\_\_\_ TITLE: \_\_\_\_\_

Rev	AWO #	Description	Date	Appr
-		RELEASED	3/19/07	
A		REDRAWN	11/18/13	KW/TW
B		REDRAWN	2/10/15	HR/NP
C		REVISED SPEC.	7/15/15	HR/YC



Positions: 02 thru 15  
 A = .049 [1.25] x No. of Spaces  
 B = .049 [1.25] x No. of Spaces + .118 [3.00]  
 C = .049 [1.25] x No. of Spaces + .071 [1.80]  
 D = .049 [1.25] x No. of Spaces + .230 [5.85]  
 PACKAGED ON TAPE & REEL

**SPECIFICATIONS:**

Material:  
 Insulator: Hi-Temp Thermoplastic, rated UL 94V-0  
 Insulator color: Natural  
 Contacts: Brass  
 Solder nail: Brass  
 Plating:  
 Tin over Nickel underplate overall  
 Electrical:  
 Current rating: 1 A AC/DC  
 Contact resistance: 20 mohms max  
 Insulation resistance: 100 Mohms min  
 Dielectric withstanding voltage: 250 VAC for 1 minute  
 Temperature Rating:  
 -40°C to +85°C  
 Environmental:  
 Lead free, RoHS compliant.



UNLESS OTHERWISE SPECIFIED ALL DIMENSIONS ARE INCHES [MM] TOLERANCES: EXCEPT AS NOTED		<b>ADAM TECH</b> INTERCONNECTS 909 Rahway Avenue, Union, NJ 07083 Phone: 908-687-5000 Fax: 908-687-5710	
INCHES HOLES			
.X ± .10	Ø.X ± .10	TITLE MX 1.25mm WAFER 90° SMT	
.XX ± .020	Ø.XX ± .015		
.XXX ± .015	Ø.XXX ± .010		
APPROVALS		DATE	
DRAWN	BW	01/17/07	
CHECKED			
APPROVED			
SIZE	PART NO.	REV.	
X	125SH-B-XX-TR-SMT-T/R	C	
REF:	S00124T	SCALE:	NTS
		SHEET 1 OF 1	

## X-ON Electronics

Largest Supplier of Electrical and Electronic Components

*Click to view similar products for [Headers & Wire Housings](#) category:*

*Click to view products by [Adam](#) manufacturer:*

Other Similar products are found below :

[892-18-020-10-001101](#) [0010894062](#) [0010977306](#) [0015477636](#) [0015917161](#) [0022104068](#) [0022121042](#) [0022155065](#) [0022281023](#) [57102-F02-18ULF](#) [58102-G61-06LF](#) [582553-1](#) [0015911208](#) [01.001.5753.1](#) [0022285048](#) [0050291907](#) [02.125.8002.8](#) [CSU011177004](#) [622-0430](#) [622-3653LF](#) [63453-116](#) [636-1030](#) [636-1427](#) [636-3427](#) [636-4007](#) [641938-9](#) [65495-038](#) [65692-001LF](#) [65781-018](#) [65781-047](#) [65817-010LF](#) [65817-015LF](#) [67095-007LF](#) [67601157](#) [68631-112](#) [68645-018](#) [699319-000](#) [70.362.1628.0](#) [70-4210](#) [70-4226B](#) [70-4853B](#) [707-5028](#) [71.350.2428.0](#) [733-134](#) [733-162](#) [760-3052](#) [MHR-64-VUAL](#) [80.063.4001.1](#) [800-90-001-10-001000](#) [801-43-002-10-013000](#)