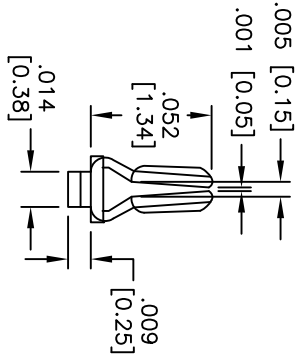
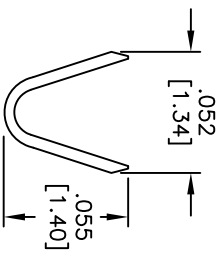
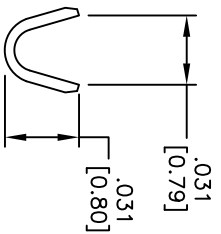
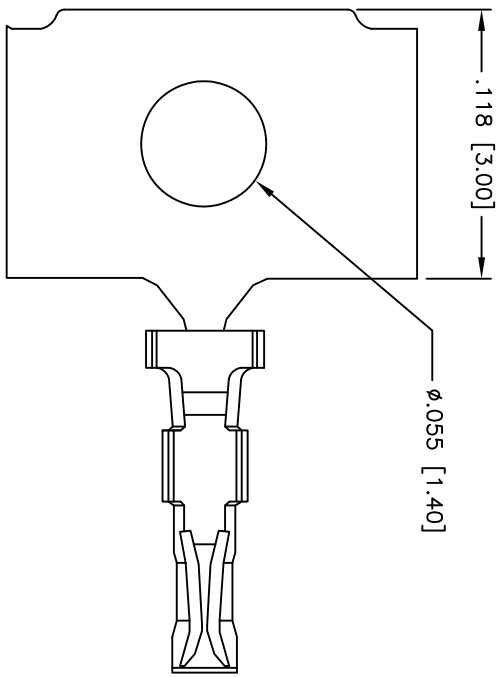
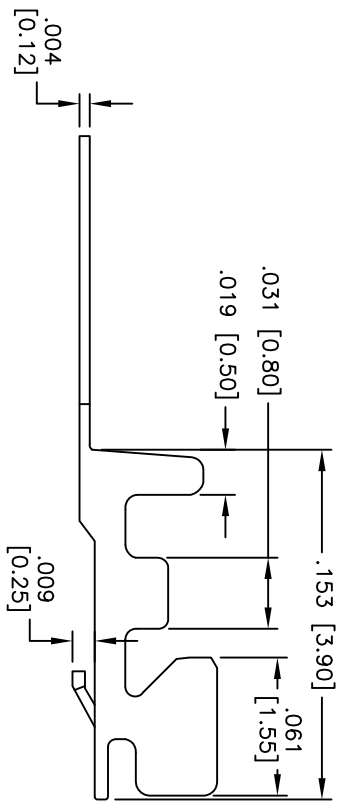


Rev	AWO #	Description	Date	Appr
-		RELEASED	01/17/07	

APPROVED: _____
 DATE: _____ TITLE: _____



SPECIFICATIONS:

- Material: Phosphor Bronze
- Contact: Tin over Copper underplate overall
- Plating: Tin over Copper underplate overall
- Electrical:
 - Operating voltage: 50 VAC max
 - Current rating: 1 Amp max
 - Insulation resistance: 500 Mohms min @ 500 VDC
 - Dielectric withstanding voltage: 500 VAC for 1 minute
 - Contact resistance: 20 mohms max.
- Mechanical:
 - Recommended Wire Awg: 28 - 32 Awg
 - Temperature Rating: Operating temperature: -25°C to +85°C
 - Environmental: Lead free, RoHS compliant



UNLESS OTHERWISE SPECIFIED
 ALL DIMENSIONS ARE INCHES [MM]
 TOLERANCES: EXCEPT AS NOTED

INCHES	HOLDS
.X ± .10	ØX ± .10
.XX ± .020	ØXX ± .015
.XXX ± .015	ØXXX ± .010

APPROVALS

DATE	DATE

ADAM TECH
 909 Railway Avenue, Union, NJ 07083
 Phone: 908-687-5000 Fax: 908-687-5710

TITLE: SH1.0mm TERMINAL

APPROVED	CHECKED	DRAWN
		BW

SIZE	PART NO.	SCALE	SHEET	REV.
X	1CTA-R	NTS	1 OF 1	-

X-ON Electronics

Largest Supplier of Electrical and Electronic Components

Click to view similar products for [Headers & Wire Housings](#) category:

Click to view products by [Adam](#) manufacturer:

Other Similar products are found below :

[892-18-020-10-001101](#) [0010894062](#) [0010977306](#) [0015477636](#) [0015917161](#) [0022104068](#) [0022121042](#) [0022155065](#) [0022281023](#) [57102-F02-18ULF](#) [58102-G61-06LF](#) [582553-1](#) [0015911208](#) [01.001.5753.1](#) [0022285048](#) [0050291907](#) [02.125.8002.8](#) [CSU011177004](#) [622-0430](#) [622-3653LF](#) [63453-116](#) [636-1030](#) [636-1427](#) [636-3427](#) [636-4007](#) [641938-9](#) [65495-038](#) [65692-001LF](#) [65781-018](#) [65781-047](#) [65817-010LF](#) [65817-015LF](#) [67095-007LF](#) [67601157](#) [68631-112](#) [68645-018](#) [699319-000](#) [70.362.1628.0](#) [70-4210](#) [70-4226B](#) [70-4853B](#) [707-5028](#) [71.350.2428.0](#) [733-134](#) [733-162](#) [760-3052](#) [MHR-64-VUAL](#) [80.063.4001.1](#) [800-90-001-10-001000](#) [801-43-002-10-013000](#)