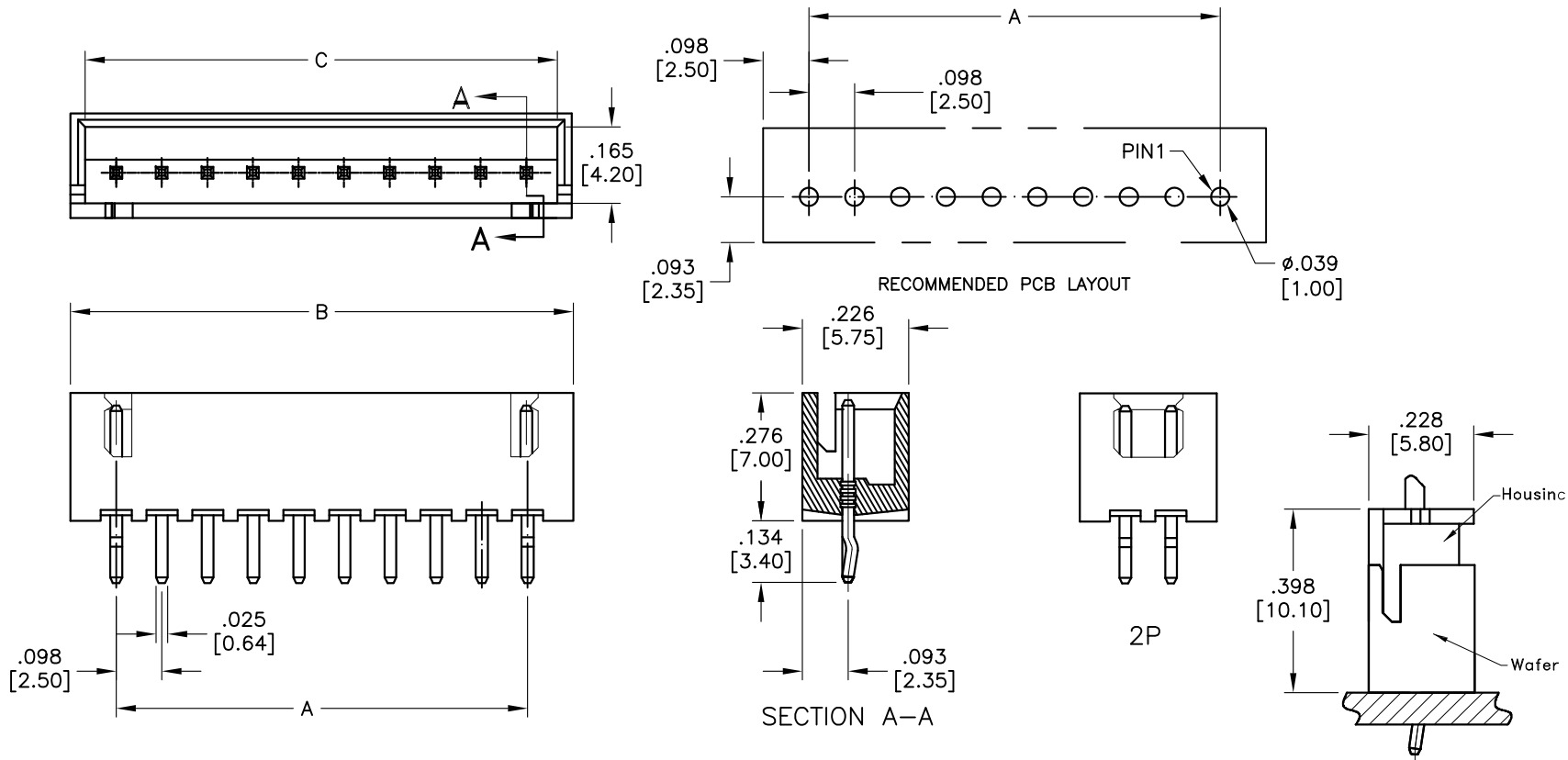


APPROVED: \_\_\_\_\_  
 DATE: \_\_\_\_\_ TITLE: \_\_\_\_\_

Rev	AWO #	Description	Date	Appr
-		RELEASED	4/13/06	
A		PART REVISION	4/19/06	
B		ADDED DIM.	8/11/09	
C		UPDATE DRAWING	4/13/18	AY/MY



**SPECIFICATIONS:**

Material:  
 Insulator: Nylon 66, rated UL 94V-0  
 Insulator color: Natural  
 Contact: Brass  
 Plating:  
 Tin over Nickel underplate overall  
 Electrical:  
 Rated Voltage: 250V AC/DC  
 Rated Current: 3A AC/DC  
 Contact Resistance: 20 mohms max.  
 Insulation resistance: 1,000 Mohms min.  
 Withstand voltage: 1000V AC for 1 minute.  
 Temperature Rating:  
 -25°C to +85°C  
 Environmental:  
 Lead free, RoHS compliant



Positions: 2 thru 20  
 A = .098 [2.50] x No. of Spaces  
 B = .098 [2.50] x No. of Spaces + .197 [5.00]  
 C = .098 [2.50] x No. of Spaces + .138 [3.50]

UNLESS OTHERWISE SPECIFIED  
 ALL DIMENSIONS ARE INCHES [MM]  
 TOLERANCES: EXCEPT AS NOTED

INCHES		HOLES	
.X	± .10	∅.X	± .10
.XX	± .020	∅.XX	± .015
.XXX	± .015	∅.XXX	± .010

**ADAM TECH**  
 INTERCONNECTS  
 909 Rahway Avenue,  
 Union, NJ 07083  
 Phone: 908-687-5000  
 Fax: 908-687-5710

APPROVALS		DATE
DRAWN	LFJ	4/13/06
CHECKED		
APPROVED		

TITLE			
WIRE TO BOARD PITCH: 2.5MM WAFER STRAIGHT TYPE W/ KINK			
SIZE	PART NO.	REV.	
X	25SH-B-XX-TS	C	
REF:	S00124T	SCALE: NTS	SHEET 1 OF 1

## X-ON Electronics

Largest Supplier of Electrical and Electronic Components

*Click to view similar products for [Headers & Wire Housings](#) category:*

*Click to view products by [Adam](#) manufacturer:*

Other Similar products are found below :

[892-18-020-10-001101](#) [0010894062](#) [0010977306](#) [0015477636](#) [0015917161](#) [0022104068](#) [0022121042](#) [0022155065](#) [0022281023](#) [57102-F02-18ULF](#) [58102-G61-06LF](#) [582553-1](#) [0015911208](#) [01.001.5753.1](#) [0022285048](#) [0050291907](#) [02.125.8002.8](#) [CSU011177004](#) [622-0430](#) [622-3653LF](#) [63453-116](#) [636-1030](#) [636-1427](#) [636-3427](#) [636-4007](#) [641938-9](#) [65495-038](#) [65692-001LF](#) [65781-018](#) [65781-047](#) [65817-010LF](#) [65817-015LF](#) [67095-007LF](#) [67601157](#) [68631-112](#) [68645-018](#) [699319-000](#) [70.362.1628.0](#) [70-4210](#) [70-4226B](#) [70-4853B](#) [707-5028](#) [71.350.2428.0](#) [733-134](#) [733-162](#) [760-3052](#) [MHR-64-VUAL](#) [80.063.4001.1](#) [800-90-001-10-001000](#) [801-43-002-10-013000](#)