

6

5

4

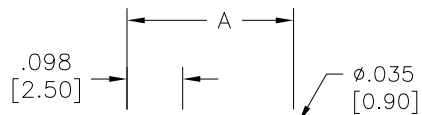
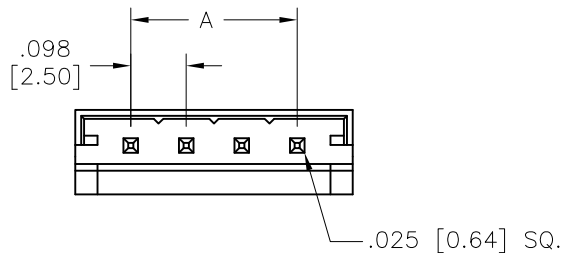
3

2

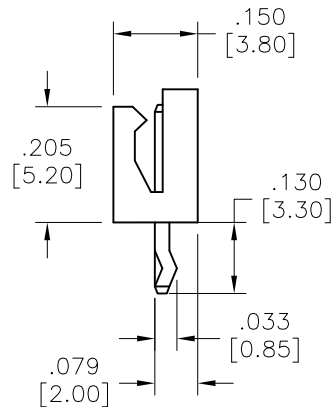
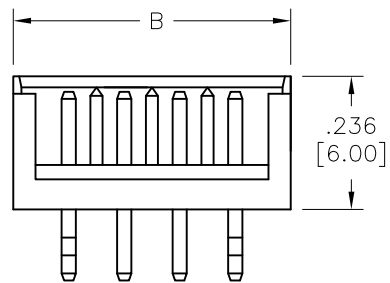
1

APPROVED: _____
DATE: _____ TITLE: _____

Rev	AWO #	Description	Date	Appr
-		RELEASED	9/19/05	
A		REDRAWN	4/16/10	
B		ADDED DIM.	12/1/15	AYYC
C		UPDATE DRAWING	12/24/20	OW/LX



RECOMMENDED PCB LAYOUT



SPECIFICATIONS:

Material:
Insulator: Nylon, rated UL 94V-0
Insulator color: Nature
Contacts: Brass

Plating:
Tin over Copper underplate overall

Electrical:
Voltage rating: 250V AC, DC
Current rating: 3A AC, DC
Insulation resistance: 1000 Mohms min
Dielectric withstanding voltage: 800 VAC for 1 minute

Temperature Rating:
-25°C to +85°C

Environmental:
Lead free, RoHS compliant.



Positions: 02 thru 12
A= .098 [2.50] x No. of Space
B= .098 [2.50] x No. of Space + .197 [5.00]

UNLESS OTHERWISE SPECIFIED
ALL DIMENSIONS ARE INCHES [MM]
TOLERANCES: EXCEPT AS NOTED
INCHES HOLES
.X ±.10 ØX ±.10
.XX ±.020 ØXX ±.015
.XXX ±.015 ØXXX ±.010



909 Rahway Avenue,
Union, NJ 07083
Phone: 908-687-5000
Fax: 908-687-5710

APPROVALS		DATE
DRAWN	SS	9/19/05
CHECKED		
APPROVED		

TITLE 2.5MM SHROUDED HEADER, SINGLE ROW, TIN PLATED		
SIZE X	PART NO. 25SH-C-XX-TS	REV. C
REF: S00016T	SCALE: NTS	SHEET 1 OF 1

6

5

4

3

2

1

X-ON Electronics

Largest Supplier of Electrical and Electronic Components

Click to view similar products for [Headers & Wire Housings](#) category:

Click to view products by [Adam](#) manufacturer:

Other Similar products are found below :

[892-18-020-10-001101](#) [0010894062](#) [0010977306](#) [0015477636](#) [0015917161](#) [0022104068](#) [0022121042](#) [0022155065](#) [0022281023](#) [57102-F02-18ULF](#) [58102-G61-06LF](#) [582553-1](#) [0015911208](#) [01.001.5753.1](#) [0022285048](#) [0050291907](#) [02.125.8002.8](#) [CSU011177004](#) [622-0430](#) [622-3653LF](#) [63453-116](#) [636-1030](#) [636-1427](#) [636-3427](#) [636-4007](#) [641938-9](#) [65495-038](#) [65692-001LF](#) [65781-018](#) [65781-047](#) [65817-010LF](#) [65817-015LF](#) [67095-007LF](#) [67601157](#) [68631-112](#) [68645-018](#) [699319-000](#) [70.362.1628.0](#) [70-4210](#) [70-4226B](#) [70-4853B](#) [707-5028](#) [71.350.2428.0](#) [733-134](#) [733-162](#) [760-3052](#) [MHR-64-VUAL](#) [80.063.4001.1](#) [800-90-001-10-001000](#) [801-43-002-10-013000](#)