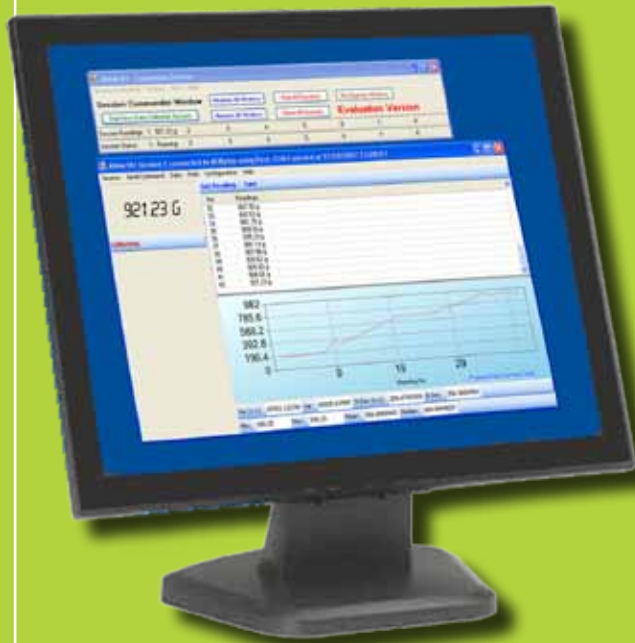


AdamDU - Data Collection Software



AdamDU (Data Utility) software lets you easily capture data from Adam Equipment balances and scales for immediate analysis or export to other applications. Keep tighter control of weighing operations and integrate weighing tasks into processes with this comprehensive data collection utility.

AdamDU offers several useful functions such as graphing, statistical analysis, and data export to XML, CSV, HTML and Text files, or directly to Windows® applications including Microsoft® Excel¹, Microsoft® Word¹ or the Windows® Clipboard.

With support to accept and manage up to 8 balances or scales simultaneously, AdamDU is the best choice in data collection software for a range of applications.



ADAM[®]
THE RIGHT BALANCE
Speed, Performance, Value

Easy setup and intuitive operation make the feature-packed AdamDU an exceptional choice for collecting balance and scale data.



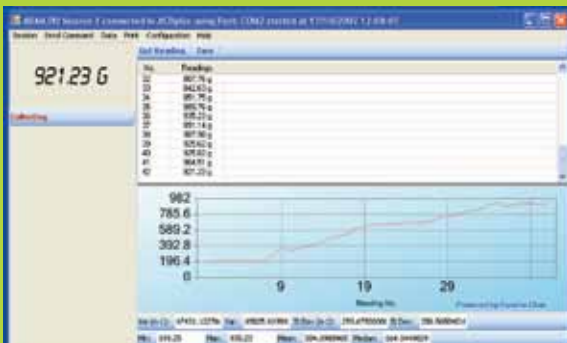
The Commander window lets you view data for up to 8 balances or scales on one screen for an overview of the active data sessions. You can control sessions by starting or stopping data collection at any time, or sort the windows for easy viewing.



Multiple data collection windows show readings for each balance or scale.



Six user-defined fields are available for custom data entry with each reading. Custom data can be exported with the weighing data.



Real time graphing and statistics are easily viewable in the data grid. Balance control buttons let you request data or tare the balance right from the software.

Practical Functionality – Smart Features

- Monitor and collect data readings for up to 8 balances or scales simultaneously.
- Record custom data or notations along with readings using up to 6 user-defined fields.
- Log calibration reports to file for maintaining complete calibration records.
- Collect date and time with readings.
- Collect balance serial number with readings for unique identification. (Feature may not be available with all balances and scale).
- Configure AdamDU to remember individual session settings and file names.

Statistics and Graphing

- View statistics including Min, Max, Median, Mean, Variance, and Standard Deviation.
- Graph readings in real time. Print results and graphs from within the AdamDU application.
- Quickly search for a specific reading, min, or max readings

Easy Data Management

- Dynamically export readings in several file formats (text, CSV, HTML, XML) for importing to other systems or applications.
- Export captured readings automatically to Microsoft® Excel¹ or Microsoft® Word¹ for further analysis or reporting.
- Export captured readings to Windows® Clipboard for quick pasting in Windows® applications.

Quick Setup and Installation

Designed to connect with Adam balances, AdamDU setup is quick and easy:

1. Install the software on your PC
2. Connect the balance to the PC with an RS-232 cable. For USB-only PC's an RS-232 to USB converter is required.
3. Start the AdamDU application, select the balance or scale model from the pull down menu, and start collecting data.

Adam Balances and Scales Supported

- ACBplus Compact Balances
- ADK Precision Balances
- AE 401 Indicator
- AE 202 Indicators
- AZextra Price Computing Retail Scales
- BFW Platform Scales
- CBC Bench Counting Scales
- CBD Counting Scales
- CBK Bench Scales
- CBK M Approved Bench Scales
- CFC Floor counting Scales
- CFW Check Weighing Floor Scales
- CPWplus Weighing Scales
- GFK Weighing Scales
- GFK M Weighing Scales (EC Approved)
- GK Indicator
- GK-M Indicator (EC Approved)
- HCB Compact Balances
- PGL Precision Balances
- PGW Precision Balances
- PMB Moisture Analyser
- PW Analytical Balances

¹You need a licensed copy of Microsoft® Word and Microsoft® Excel to use this facility

Microsoft Word, Microsoft Excell, Microsoft and Windows are registered trademark of Microsoft Corporation in the United States and other countries.

Full information and a trial download at: www.AdamDU.com



X-ON Electronics

Largest Supplier of Electrical and Electronic Components

Click to view similar products for Adam manufacturer:

Other Similar products are found below :

[LHC-04-TRA-V0](#) [LHF-04-SA1-V2](#) [ASJ-5-3](#) [DE09-PL-24](#) [DPD-09-01-B3](#) [12CH-A4-02-BK](#) [12CH-A4-03-BK](#) [12CH-A4-05-BK](#) [12SH-A4-02-GS-SMT-BK](#) [12SH-A4-03-GS-SMT-BK](#) [12SH-A4-04-GS-SMT-BK](#) [12SH-A4-05-GS-SMT-BK](#) [12SH-A4-06-GS-SMT-BK](#) [FCS-D2C1-12-SG-FSR](#) [HFCS-A1-10-G](#) [MTJP-648-K6-0-A1-1](#) [CQT 202](#) [3126011263](#) [DE09-PN-25](#) [DPD-09-10-B3](#) [PCA-6-06-V-3](#) [DE09-PN-24](#) [RS2-08-G](#) [DA15-SL-26](#) [DB25-SL-23](#) [LHD-03-TS](#) [15SH-A-04-TS](#) [MTF-B-04](#) [LHD-05-TS](#) [2SH-C-03-TR](#) [CB 501](#) [PLCC-32-AT](#) [RF2-19A-T-00-50-G](#) [DDR-04](#) [MTC-03](#) [SOD-200-S-5-5.2](#) [RS2BR-A-12-SG-SMT](#) [ICM-328-1-TT-HT](#) [ICM-432-1-GT-HT](#) [ICM-432-1-TT](#) [ICM-432-1-TT-HT](#) [ICM-648-1-GT](#) [ICM-648-1-TT](#) [25CH-B-06](#) [ICM-316-1-GT-HT](#) [ICM-328-1-TT](#) [ICM-432-1-GT](#) [ICM-648-1-GT-HT](#) [ICM-648-1-TT-HT](#) [ICM-316-1-TT-HT](#)