

6

5

4

3

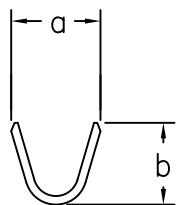
2

1

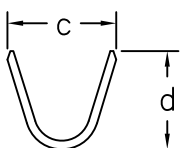
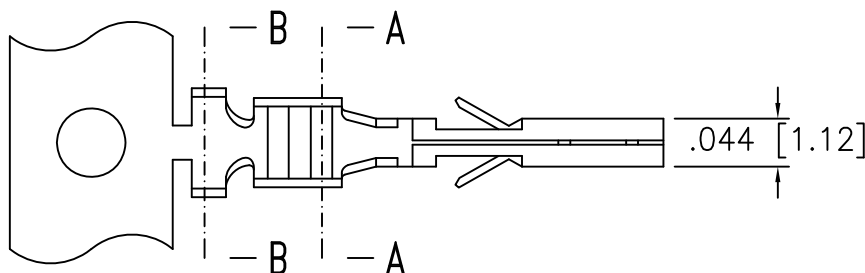
APPROVED: _____

DATE: _____ TITLE: _____

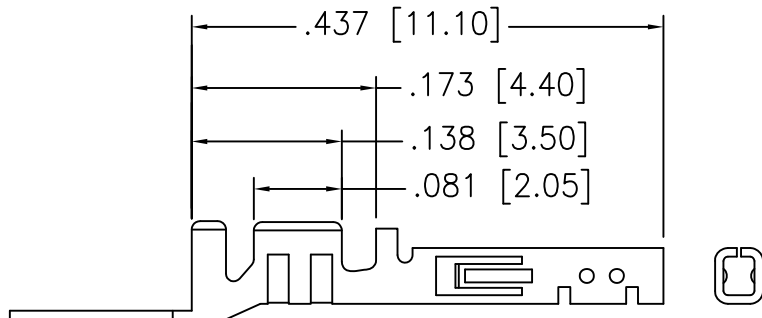
Rev	AWO #	Description	Date	Appr
-		RELEASED	10/01/08	



SEC. A-A



SEC. B-B



SPECIFICATIONS:

Material:
 Contact: Phosphor Bronze, 0.2mm thick
 Plating: Tin over copper underplate overall.

Electrical:
 Operating voltage: 250 VAC RMS max
 Current rating: 20 Awg: 5 Amps max
 22 Awg: 5 Amps max
 24 Awg: 4 Amps max
 26 Awg: 3 Amps max
 28 Awg: 2 Amps max
 30 Awg: 1 Amp max.

Contact resistance: 10 mohms max.
 Dielectric withstanding voltage: 1500 VAC for 1 minute
 Temperature rise: 30° max.

Mechanical:
 Wire size: 20 Awg thru 30 Awg

Environmental:
 Lead free, RoHS compliant.



P/N	Wire size	Dim. a	Dim. b	Dim. c	Dim. d
DMT-A-C-F-T-R	#26~#30AWG	.071 [1.80]	.063 [1.60]	.094 [2.40]	.075 [1.90]
DMT-B-C-F-T-R	#20~#24AWG	.083 [2.10]	.083 [2.10]	.106 [2.70]	.098 [2.50]

UNLESS OTHERWISE SPECIFIED
 ALL DIMENSIONS ARE MM [INCHES]
 TOLERANCES: EXCEPT AS NOTED

INCHES	HOLES
.X ± .10	Ø.X ± .10
.XX ± .020	Ø.XX ± .015
.XXX ± .015	Ø.XXX ± .010

ADAM TECH

909 Rahway Avenue, Union, NJ 07083
 Phone: 908-687-5000 Fax: 908-687-5710

TITLE .118" [3.0mm] CRIMP TERMINAL,
 TIN PLATED, ON REEL

APPROVALS		DATE
DRAWN	DY	10/01/08
CHECKED		
APPROVED		

SIZE	PART NO.	REV.
X	DMT-X-C-F-T-R	-
REF:	S00123T	SCALE: NTS SHEET 1 OF 1

6

5

4

3

2

1

X-ON Electronics

Largest Supplier of Electrical and Electronic Components

Click to view similar products for [Headers & Wire Housings](#) category:

Click to view products by [Adam](#) manufacturer:

Other Similar products are found below :

[892-18-020-10-001101](#) [0010894062](#) [0010977306](#) [0015477636](#) [0015917161](#) [0022104068](#) [0022121042](#) [0022155065](#) [0022281023](#) [57102-F02-18ULF](#) [58102-G61-06LF](#) [582553-1](#) [0015911208](#) [01.001.5753.1](#) [0022285048](#) [0050291907](#) [02.125.8002.8](#) [CSU011177004](#) [622-0430](#) [622-3653LF](#) [63453-116](#) [636-1030](#) [636-1427](#) [636-3427](#) [636-4007](#) [641938-9](#) [65495-038](#) [65692-001LF](#) [65781-018](#) [65781-047](#) [65817-010LF](#) [65817-015LF](#) [67095-007LF](#) [67601157](#) [68631-112](#) [68645-018](#) [699319-000](#) [70.362.1628.0](#) [70-4210](#) [70-4226B](#) [70-4853B](#) [707-5028](#) [71.350.2428.0](#) [733-134](#) [733-162](#) [760-3052](#) [MHR-64-VUAL](#) [80.063.4001.1](#) [800-90-001-10-001000](#) [801-43-002-10-013000](#)