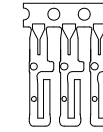
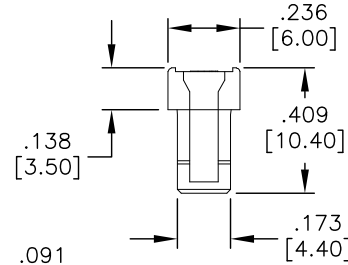
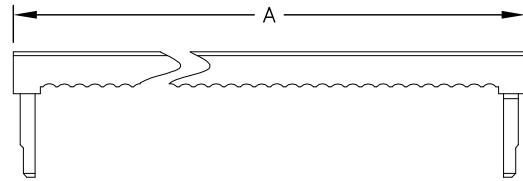
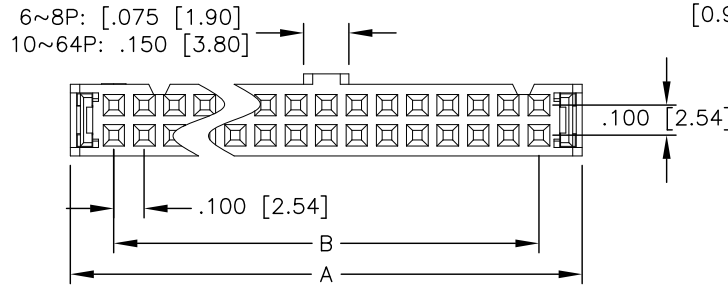
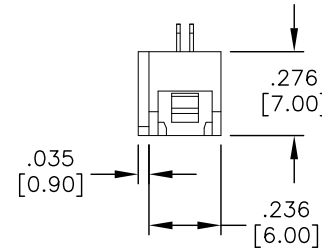
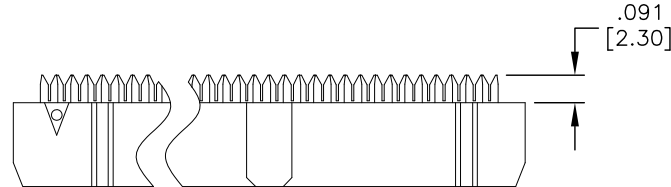


APPROVED: _____
 DATE: _____ TITLE: _____

Rev	AWO #	Description	Date	Appr
-		RELEASED	6/3/05	
A		REDRAW & REVISED	4/07/06	
B		REMOVE STRAIN RELIEF	2/10/09	
C		REDRAWN	11/23/10	
D		REVISED SHAPE	7/26/11	
E		ADDED POSITIONS	10/28/11	
F		UPDATE DRAWING	4/13/16	AY



Standard Terminal



SPECIFICATIONS:

Material:
 Insulator: PBT, glass reinforced, rated UL 94V-0
 Insulator color: Black

Contacts: Phosphor Bronze
 Plating:

Gold flash over Nickel on contact area,
 Tin over Copper underplate on IDC area

Electrical:
 Operating voltage: 250 VAC max.
 Current rating: 1 Amp max.
 Contact resistance: 20 mohms max.
 Insulation resistance: 5,000 Mohms min @ 500 VDC.
 Dielectric withstanding voltage: 500 VAC for 1 minute

Environmental:
 Lead free, RoHS compliant



Positions: 6 thru 20, 24, 26, 30, 34, 36, 40, 44, 50, 56, 60, 62, & 64
 A = .100 [2.54] x No. of Spaces per Row + .285 [7.24]
 B = .100 [2.54] x No. of Spaces per Row

UNLESS OTHERWISE SPECIFIED ALL DIMENSIONS ARE INCHES [MM] TOLERANCES: EXCEPT AS NOTED		ADAM TECH 909 Rahway Avenue, Union, NJ 07083 Phone: 908-687-5000 Fax: 908-687-5710	
INCHES HOLES .X ± .10 Ø.X ± .10 .XX ± .020 Ø.XX ± .015 .XXX ± .015 Ø.XXX ± .010			
APPROVALS		TITLE .100 [2.54] FLAT CABLE IDC SOCKET STANDARD SINGLE WIPE CONTACTS	
DRAWN	SS	DATE	6/3/05
CHECKED		SIZE	X
APPROVED		PART NO.	FCS-XX-SG
REF: S00087T		SCALE: NTS	REV. F
		SHEET 1 OF 1	

6

5

4

3

2

1

D

D

C

C

B

B

A

A

6

5

4

3

2

1

X-ON Electronics

Largest Supplier of Electrical and Electronic Components

Click to view similar products for [Headers & Wire Housings](#) category:

Click to view products by [Adam](#) manufacturer:

Other Similar products are found below :

[892-18-020-10-001101](#) [0010894062](#) [0010977306](#) [0015477636](#) [0015917161](#) [0022104068](#) [0022121042](#) [0022155065](#) [0022281023](#) [57102-F02-18ULF](#) [58102-G61-06LF](#) [582553-1](#) [0015911208](#) [01.001.5753.1](#) [0022285048](#) [0050291907](#) [02.125.8002.8](#) [CSU011177004](#) [622-0430](#) [622-3653LF](#) [63453-116](#) [636-1030](#) [636-1427](#) [636-3427](#) [636-4007](#) [641938-9](#) [65495-038](#) [65692-001LF](#) [65781-018](#) [65781-047](#) [65817-010LF](#) [65817-015LF](#) [67095-007LF](#) [67601157](#) [68631-112](#) [68645-018](#) [699319-000](#) [70.362.1628.0](#) [70-4210](#) [70-4226B](#) [70-4853B](#) [707-5028](#) [71.350.2428.0](#) [733-134](#) [733-162](#) [760-3052](#) [MHR-64-VUAL](#) [80.063.4001.1](#) [800-90-001-10-001000](#) [801-43-002-10-013000](#)