

DESCRIPTION	MATERIAL	FINISH
FERRULE	BRASS	GOLD
CONTACT PIN	BRASS	GOLD
RING	BE CU	GOLD
BODY	BRASS	GOLD
INSULATOR	PTFE	WHITE
BARREL	BRASS	GOLD

SPECIFICATIONS:

Electrical:
Frequency Range: DC-6 GHz

Normal Impedance: 50 ohm

Operating voltage: 170 Volts max.

Proof voltage: 500 Volts

VSWR: 1.3 max. @ 1 GHz

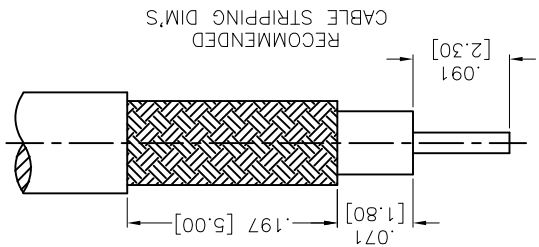
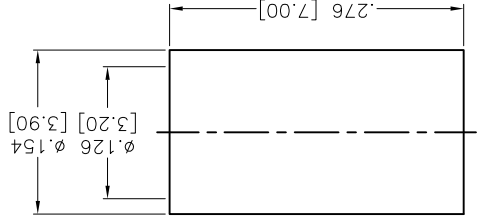
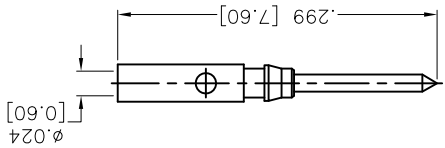
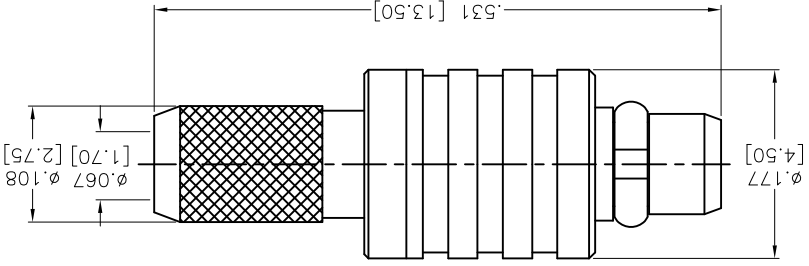
Temperature Rating:

Operating temperature: -55°C to +155°C

Environmental:
Lead free, RoHS compliant.



APPROVED	REF: S00277	SCALE: NTS	SHEET 1 OF 1
CHECKED	SIZE X	PART NO. RF12-06-T-02-50-G	REV. A
DRAWN SS	DATE 5/7/08	TITLE RF CONNECTOR, TYPE MMGX, MALE CRIMP FOR RG174/U, 316/U, LMR-100, 50 OHM	
APPROVALS		UNLESS OTHERWISE SPECIFIED ALL DIMENSIONS ARE MM [INCHES] TOLERANCES: EXCEPT AS NOTED INCHES	
X ±.10 XX ±.020 XXX ±.015		ØX ±.10 ØXX ±.015 ØXXX ±.010	
Holes		909 Rahway Avenue, Union, NJ 07083 Phone: 908-687-5000 Fax: 908-687-0214	
ADAM TECH			



APPROVED: _____ DATE: _____
TITLE: _____

Rev	AWO #	Description	Date	Appr
A	-	RELEASED	5/7/08	
		REDRAWN	5/9/16	AY/NP

X-ON Electronics

Largest Supplier of Electrical and Electronic Components

Click to view similar products for [adam manufacturer](#):

Other Similar products are found below :

[NPC-6-010-BU](#) [NPC-5E-010-GY](#) [NPC-5E-010-GY-BB](#) [CA-MINIDP-HDMIF-6FT](#) [CA-MINIDP-DVIM-6FT](#) [CA-MINIDP-DVIM-3FT](#) [CA-MINIDP-DVIM-10FT](#) [CA-MINIDP-VGAF-3FT](#) [HPH1-B-11-UA](#) [15SH-A-07-TS](#) [25SH-E-05-TR](#) [BHR-14-VUA](#) [LHC-04-TRA-V0](#) [BHR-16-HUA](#) [DA15-HD-PB-TS](#) [IEC-A-1](#) [DE09-PN-25](#) [DPD-09-10-B3](#) [PCA-6-06-V-3](#) [RF2-03E-T-00-50-G](#) [PH1RB-40-UA](#) [ADC-028-2-T/R](#) [DE09-PN-24](#) [BHR-10-VUA](#) [DA15-SL-26](#) [DA15-ST-1](#) [DB25-SL-23](#) [EB9A-02-C](#) [CB 501](#) [PLCC-32-AT](#) [15SH-A-04-TS](#) [MTF-B-04](#) [LHD-05-TS](#) [2SH-C-03-TR](#) [DDR-04](#) [MTC-03](#) [SOD-200-S-5-5.2](#) [RS2BR-A-12-SG-SMT](#) [ICM-328-1-TT-HT](#) [ICM-432-1-GT-HT](#) [ICM-432-1-TT](#) [ICM-432-1-TT-HT](#) [ICM-648-1-GT](#) [ICM-648-1-TT](#) [25CH-B-06](#) [ICM-316-1-GT-HT](#) [ICM-328-1-TT](#) [ICM-432-1-GT](#) [ICM-648-1-GT-HT](#) [ICM-648-1-TT-HT](#)