

6

5

4

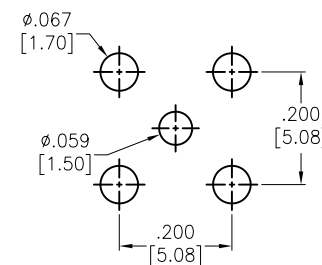
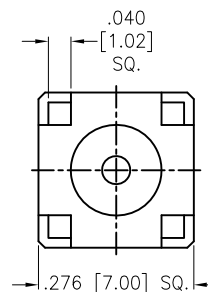
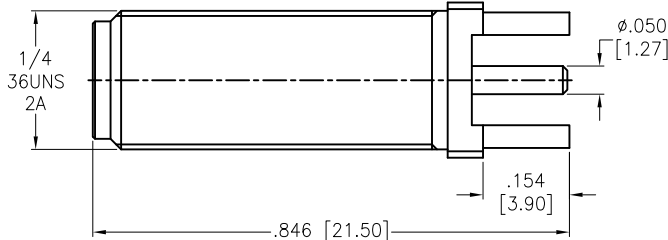
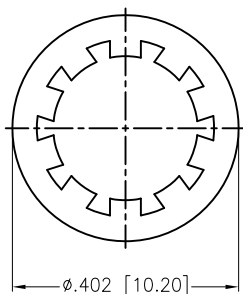
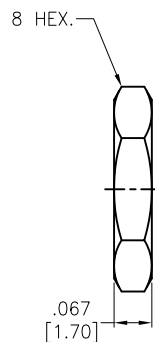
3

2

1

APPROVED: \_\_\_\_\_  
DATE: \_\_\_\_\_ TITLE: \_\_\_\_\_

Rev	AWO #	Description	Date	Appr
-		RELEASED	4/20/16	



RECOMMENDED PCB LAYOUT

HEX NUT	BRASS	GOLD
WASHER	STEEL	GOLD
CONTACT PIN	BRASS	GOLD
INSULATOR	PTFE	WHITE
BARREL	BRASS	GOLD
DESCRIPTION	MATERIAL	FINISH

**SPECIFICATIONS:**

Electrical:  
 Nominal Impedance: 50 ohms  
 Frequency range: DC 0-18 GHz  
 Working voltage: 335 Volts max  
 Proof voltage: 1000 Volts  
 Temperature Rating:  
 Operating temperature: -65°C to +165°C

Environmental:  
 Lead free, RoHS compliant.



UNLESS OTHERWISE SPECIFIED ALL DIMENSIONS ARE INCHES [MM] TOLERANCES: EXCEPT AS NOTED		<h1>ADAM TECH</h1> <p>909 Rahway Avenue, Union, NJ 07083          Phone: 908-687-5000 Fax: 908-687-5710</p>	
INCHES HOLES			
.X ± .10	Ø.X ± .10	TITLE	
.XX ± .020	Ø.XX ± .015	SMA JACK EDGE CARD MOUNT PCB, STRAIGHT	
.XXX ± .015	Ø.XXX ± .010	SIZE	PART NO.
APPROVALS		X	RF2-152-T-00-50-G-HDW
DRAWN	HR	REV.	-
CHECKED	MW	REF:	S00277T
APPROVED		SCALE:	NTS
		SHEET	1 OF 1

6

5

4

3

2

1

## X-ON Electronics

Largest Supplier of Electrical and Electronic Components

*Click to view similar products for [RF Connectors](#) / [Coaxial Connectors](#) category:*

*Click to view products by [Adam](#) manufacturer:*

Other Similar products are found below :

[89674-0827](#) [6059674-1](#) [630059-000](#) [6501-1071-002](#) [6769](#) [7002-1541-010](#) [7002-1572-002](#) [7004-1512-000](#) [7009-1511-004](#) [7101-1541-010](#)  
[7101-1571-002](#) [7105-1521-002](#) [7203-1571-003](#) [7209-1511-011](#) [7210-1511-040](#) [7242-1511-000](#) [7405-1521-005](#) [7405-1521-802](#)  
[804S01D04M040](#) [8527](#) [8547](#) [FS11V](#) [877931](#) [8808-1511-001](#) [9049-9513-000](#) [9074-9513-000](#) [PL11C-026](#) [PL40-36](#) [9408-1113-000](#) [980-](#)  
[8666-005](#) [11 SMA-50-2-6 / 111 NE](#) [11 SMA-50-3-6 / 111 NE](#) [1-201144-1](#) [120919](#) [R107003010W](#) [R112186000](#) [R113053000W](#) [R113082097](#)  
[R113236000](#) [R114083000](#) [R114670000W](#) [R123415000W](#) [R124076320](#) [R124076450](#) [R124175123](#) [R125075000W](#) [R125075001](#)  
[R125172000W](#) [R125415030](#) [R141007161](#)