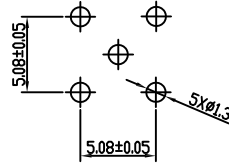
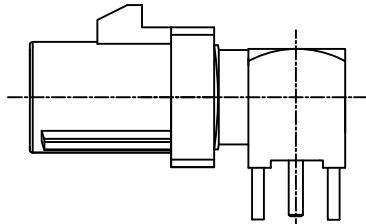
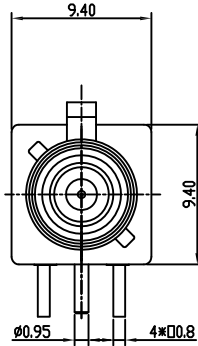
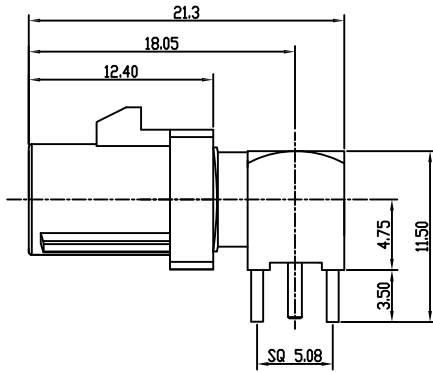
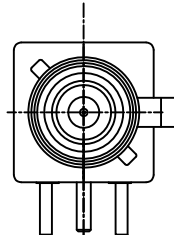


APPROVED: _____
 DATE: _____ TITLE: _____

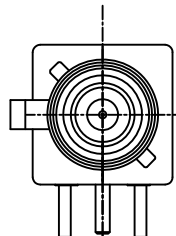
Rev	AWO #	Description	Date	Appr
-		RELEASED	6/6/18	
A		ADDED P/N	12/20/18	AY/IW



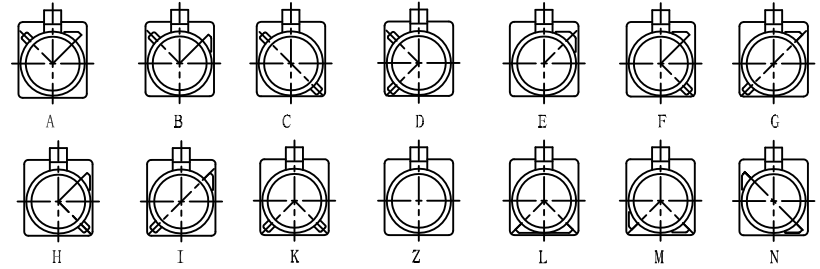
RECOMMENDED P.C.B LAYOUT



RF55-33X-T-00-50-C-SH



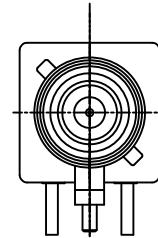
RF55-33X-T-00-50-D-SH



Port Type

Type	Color	Item No
A	BLACK	RF55-33A-T-00-50-X-SH
B	WHITE	RF55-33B-T-00-50-X-SH
C	BLUE	RF55-33C-T-00-50-X-SH
D	BORDEAUX VIOLET	RF55-33D-T-00-50-X-SH
E	GREEN	RF55-33E-T-00-50-X-SH
F	BROWN	RF55-33F-T-00-50-X-SH
G	GREY	RF55-33G-T-00-50-X-SH
H	VIOLET	RF55-33H-T-00-50-X-SH
I	BEIGE	RF55-33I-T-00-50-X-SH
K	CURRY	RF55-33K-T-00-50-X-SH
Z	WATER BLUE	RF55-33Z-T-00-50-X-SH
L	CARMINE RED	RF55-33L-T-00-50-X-SH
M	PASTEL ORANGE	RF55-33M-T-00-50-X-SH
N	PASTEL GREEN	RF55-33N-T-00-50-X-SH

RF55-33X-T-00-50-A-SH



RF55-33X-T-00-50-B-SH

PLASTIC SHELL	PA66+30%GF	
INSULATOR	LCP	
INSULATOR	PTFE	
PIN CONTACT	PHOSPHOR BRONZE	GOLD
COVER	BRASS	NICKEL
BODY (FRONT)	BRASS	NICKEL
BODY (BACK)	BRASS	GOLD
DESCRIPTION	MATERIAL	FINISH

SPECIFICATIONS:

Electrical:
 Frequency range: DC~4 GHz
 Nominal Impedance: 50 ohms
 Withstanding voltage: 335 V
 Insulator Resistance: 1000 MΩ
 Contact Resistance: 6 Milliohms max. (Center Contact)
 1 Milliohms max. (Outer Contact)

Temperature Rating:
 Operating temperature: -40°C to +85°C
 Environmental:
 Lead free, RoHS compliant.



UNLESS OTHERWISE SPECIFIED
 ALL DIMENSIONS ARE MILLIMETERS
 TOLERANCES: EXCEPT AS NOTED
 INCHES HOLES

.X ± 0.25
 .XX ± 0.15 ØXX ± 0.13
 .XXX + 0.05

APPROVALS		DATE
DRAWN	AY	6/6/18
CHECKED	MY	6/6/18
APPROVED		

ADAM TECH INTERCONNECTS
 909 Rahway Avenue,
 Union, NJ 07083
 Phone: 908-687-5000
 Fax: 908-687-5710

TITLE FAKRA PLUG SMB TYPE RIGHT ANGLE, FOR PCB		
SIZE X	PART NO. RF55-33X-T-00-50-X-SH	REV. A
REF: S00134C	SCALE: NTS	SHEET 1 OF 1

X-ON Electronics

Largest Supplier of Electrical and Electronic Components

Click to view similar products for [RF Connectors](#) / [Coaxial Connectors](#) category:

Click to view products by [Adam](#) manufacturer:

Other Similar products are found below :

[89674-0827](#) [6059674-1](#) [630059-000](#) [6501-1071-002](#) [6769](#) [7002-1541-010](#) [7002-1572-002](#) [7004-1512-000](#) [7009-1511-004](#) [7101-1541-010](#)
[7101-1571-002](#) [7105-1521-002](#) [7203-1571-003](#) [7209-1511-011](#) [7210-1511-040](#) [7242-1511-000](#) [7405-1521-005](#) [7405-1521-802](#)
[804S01D04M040](#) [8527](#) [8547](#) [FS11V](#) [877931](#) [8808-1511-001](#) [9049-9513-000](#) [9074-9513-000](#) [PL11C-026](#) [PL40-36](#) [9408-1113-000](#) [980-](#)
[8666-005](#) [11 SMA-50-2-6 / 111 NE](#) [11 SMA-50-3-6 / 111 NE](#) [1-201144-1](#) [120919](#) [R107003010W](#) [R112186000](#) [R113053000W](#) [R113082097](#)
[R113236000](#) [R114083000](#) [R114670000W](#) [R123415000W](#) [R124076320](#) [R124076450](#) [R124175123](#) [R125075000W](#) [R125075001](#)
[R125172000W](#) [R125415030](#) [R141007161](#)