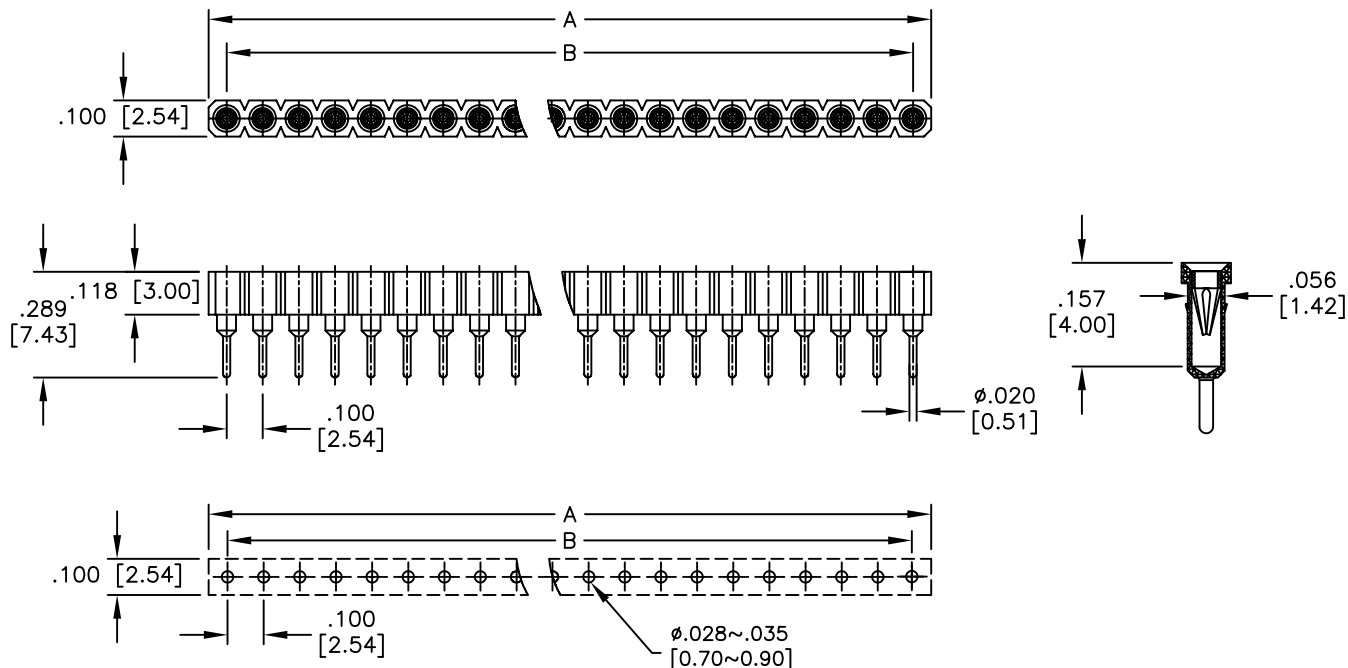


APPROVED: _____
 DATE: _____ TITLE: _____

Rev	AWO #	Description	Date	Appr
-		RELEASED	1/28/05	
A		TAIL LENGTH	4/12/06	
B		REDRAWN	10/3/11	
C		ADDED SECTION & DIM.	11/20/17	HR/NP



RECOMMENDED PCB LAYOUT

SPECIFICATIONS:

Material:

Insulator: PBT, Glass reinforced, rated UL 94V-0

Insulator color: Black

Contacts: Copper alloy

Sleeve: Brass

Plating:

Inner contact: Gold flash over Nickel underplate

Outer sleeve: Tin over Copper underplate overall

Electrical:

Rated voltage : 100V RMS/ 150VDC

Current rating: 3 Amp

Contact resistance: 4 mohms max

Insulation resistance: 10,000 Mohms min @ 500 VAC

Mechanical :

Average insertion force : < 250g

With steel pin of \varnothing .017 [0.43]mm

Average withdrawal force : > 50g

With steel pin of \varnothing .017 [0.43]mm

Mechanical life : min. 200

Temperature Rating:

Operating temperature : Gold plated : -55 °C to + 125 °C

(Continuous) Tin plated : -40 °C to + 105 °C

Environmental:

Lead free, RoHS compliant



Positions: 1 thru 40

A = .100 [2.54] x No. of Positions

B = .100 [2.54] x No. of Spaces

UNLESS OTHERWISE SPECIFIED
 ALL DIMENSIONS ARE INCHES [MM]
 TOLERANCES: EXCEPT AS NOTED

INCHES		HOLES	
.X	± .10	\varnothing .X	± .10
.XX	± .020	\varnothing .XX	± .015
.XXX	± .015	\varnothing .XXX	± .010

ADAM TECH

909 Rahway Avenue, Union, NJ 07083
 Phone: 908-687-5000 Fax: 908-687-5710

TITLE: **SCREW MACHINE CONTACT SOCKET**
.100" SPACING, GOLD/TIN PLATED

APPROVALS		DATE
DRAWN	SS	1/28/05
CHECKED		
APPROVED		

SIZE	PART NO.	REV.
X	SMC-1-XX-1-GT	C
REF: S00007T	SCALE: NTS	SHEET 1 OF 1

X-ON Electronics

Largest Supplier of Electrical and Electronic Components

Click to view similar products for [Headers & Wire Housings](#) category:

Click to view products by [Adam](#) manufacturer:

Other Similar products are found below :

[892-18-020-10-001101](#) [0010894062](#) [0010977306](#) [0015477636](#) [0015917161](#) [0022104068](#) [0022121042](#) [0022155065](#) [0022281023](#) [57102-F02-18ULF](#) [58102-G61-06LF](#) [582553-1](#) [0015911208](#) [01.001.5753.1](#) [0022285048](#) [0050291907](#) [02.125.8002.8](#) [CSU011177004](#) [622-0430](#) [622-3653LF](#) [63453-116](#) [636-1030](#) [636-1427](#) [636-3427](#) [636-4007](#) [641938-9](#) [65495-038](#) [65692-001LF](#) [65781-018](#) [65781-047](#) [65817-010LF](#) [65817-015LF](#) [67095-007LF](#) [67601157](#) [68631-112](#) [68645-018](#) [699319-000](#) [70.362.1628.0](#) [70-4210](#) [70-4226B](#) [70-4853B](#) [707-5028](#) [71.350.2428.0](#) [733-134](#) [733-162](#) [760-3052](#) [MHR-64-VUAL](#) [80.063.4001.1](#) [800-90-001-10-001000](#) [801-43-002-10-013000](#)