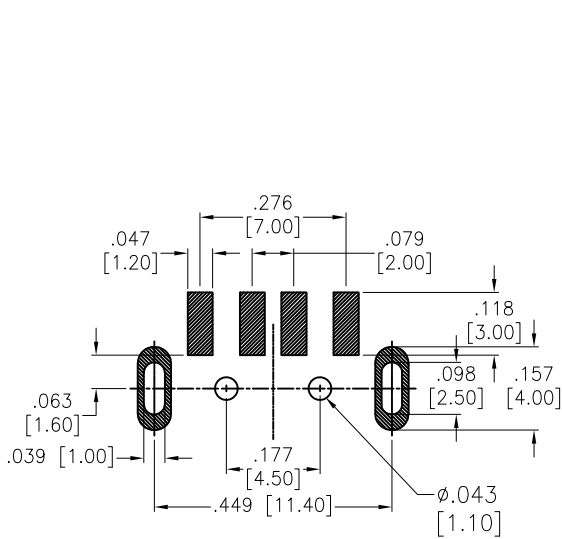


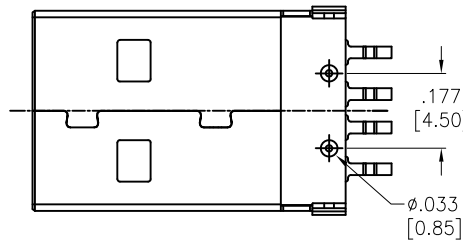
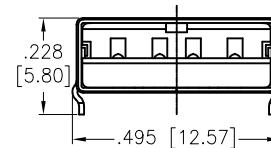
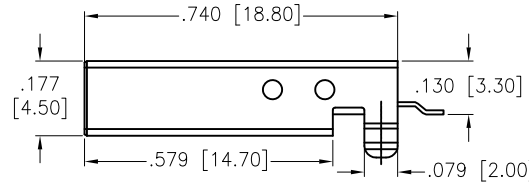
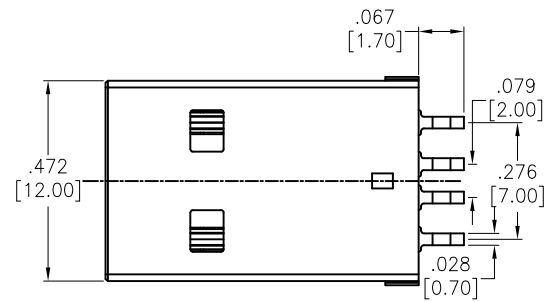
APPROVED: _____

DATE: _____ TITLE: _____


Rev	AWO #	Description	Date	Aprr
-		RELEASED	9/17/07	
A		REDRAWN	5/18/11	
B		REVISED DIM.	5/24/12	
C		UPDATED DRAWING	3/4/16	HR/MY
D		UPDATED DRAWING	7/22/21	WX/RL
E		UPDATED TEMPERATURE	10/17/22	LH/NL
F		UPDATE DRAWING	11/17/23	JJ/MC
G		UPDATE DRAWING	12/22/23	JJ/MC
H		ADDED DIM.	12/25/23	LH/MC
I		UPDATE DRAWING	4/26/24	JJ/MC
J		UPDATE SPEC.	5/21/24	WX/MC



RECOMMENDED P.C.B LAYOUT




SPECIFICATIONS:

Material:
 Insulator: Hi-Temp Thermoplastic, rated UL 94V-0
 Insulator color: Black
 Contacts: Brass
 Shell: SPCC, Nickle plated 

Plating:
 Gold flash over Nickel underplate on contact area
 Tin over Nickel underplate on solder tails

Electrical:
 Voltage rating: 30V AC
 Current rating: 1.5 A
 Contact resistance: 30 mohms max.
 Insulation resistance: 1000 Mohms min
 Dielectric withstanding voltage: 500 VAC for 1 minute

Temperature Rating:
 Operating temperature: -25°C to +80°C

Environmental:
 Lead free, RoHS compliant. 

INCHES		HOLES	
X	± .10	ØX	± .10
.XX	± .020	Ø.XX	± .015
.XXX	± .015	Ø.XXX	± .010

DRAWN	SS	9/17/07
CHECKED		
APPROVED		

THIS DRAWING CONTAINS INFORMATION THAT IS PROPRIETARY AND SHOULD NOT BE USED WITHOUT PRIOR WRITTEN PERMISSION FROM ADAM TECH



909 Rahway Avenue,
 Union, NJ 07083
 Phone: 908-687-5000
 Fax: 908-687-5710

TITLE		USB CONNECTOR, A TYPE PLUG, SMT SEL GOLD FLASH, BLACK INSULATOR	
SIZE	PART NO.	REV.	
X	USB-AP-S-RA-SMT	J	
REF:	S00167T-1	SCALE:	NTS
		SHEET 1 OF 1	

X-ON Electronics

Largest Supplier of Electrical and Electronic Components

Click to view similar products for [USB Connectors](#) category:

Click to view products by [Adam](#) manufacturer:

Other Similar products are found below :

[950](#) [A-USB A-LP-SMT-C](#) [A-USB B-TOP-C](#) [MUSBD11135](#) [17-200721](#) [217450-1](#) [KMBVX-TH-5S-B30](#) [KUSBX-AS2N-W](#) [KUSBX-SMT2AP1S-W30](#) [935](#) [957](#) [30-498-6](#) [SK-60A-2](#) [1734082-1](#) [30-470](#) [30-489](#) [30-541](#) [MIKROE-1451](#) [USBFTVSCCG](#) [1-1734084-2](#) [10135326-001LF](#) [USB3FTV7APEG](#) [4198](#) [1310-1023-02](#) [690-024-633-031](#) [UB-20PMFP-LC7001](#) [17-200011](#) [UB-20AFMM-LL7A01](#) [1040870124](#) [CAP-WCCMLPB1](#) [2274475-3](#) [UB-20BMFA-SL8001](#) [UB-20BFM-SA7A02](#) [UB-20BFM-SA7A05](#) [914-614A2025S10200](#) [MUSBR-AHD2-M41-SK](#) [ZX40-B-5S-1500-STDA\(30\)](#) [GSB3116344HR](#) [USB3FTV2SAZNF459](#) [USBF21GSCC](#) [U221-041N-1WVS62-F5D](#) [HYCW153-USBD05-500B](#) [HYCW219-USBD05-075B](#) [HYCW148-USBD05-117B](#) [HYCW149-USBD05-740B](#) [HYCW204-USBD05-108B](#) [HYCW214-USBA04-113B](#) [HYCW213-USBA04-113B](#) [UB-20AMFM-SL7A01](#) [KMMX-BSMT35S-1-B30TR](#)