

# NPN SILICON RF POWER TRANSISTOR

**DESCRIPTION:**

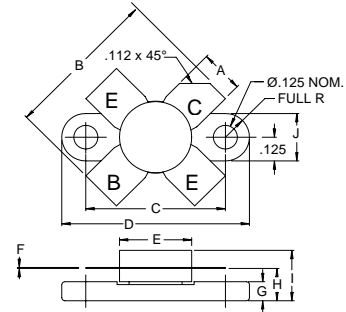
The **ASI BLW85** is Designed for Class C Amplifier Applications in VHF Mobile Radios.

**FEATURES:**

- $P_G = 9.5$  dB Typ. at 40 W /175 MHz
- $\eta_c = 60\%$  Typ. at 40 W /175 MHz
- **Omnigold™** Metalization System

**MAXIMUM RATINGS**

|               |                            |
|---------------|----------------------------|
| $I_C$         | 9.0 A                      |
| $V_{CBO}$     | 36 V                       |
| $V_{CEO}$     | 16 V                       |
| $V_{EBO}$     | 4.0 V                      |
| $P_{DISS}$    | 105 W @ $T_C = 25^\circ C$ |
| $T_J$         | -65 °C to +200 °C          |
| $T_{STG}$     | -65 °C to +150 °C          |
| $\theta_{JC}$ | 1.6 °C/W                   |

**PACKAGE STYLE .380 4L FLG**


| DIM | MINIMUM<br>inches / mm | MAXIMUM<br>inches / mm |
|-----|------------------------|------------------------|
| A   | .220 / 5.59            | .230 / 5.84            |
| B   | .785 / 19.94           |                        |
| C   | .720 / 18.29           | .730 / 18.54           |
| D   | .970 / 24.64           | .980 / 24.89           |
| E   |                        | .385 / 9.78            |
| F   | .004 / 0.10            | .006 / 0.15            |
| G   | .085 / 2.16            | .105 / 2.67            |
| H   | .160 / 4.06            | .180 / 4.57            |
| I   |                        | .280 / 7.11            |
| J   | .240 / 6.10            | .255 / 6.48            |

**CHARACTERISTICS**  $T_C = 25^\circ C$ 

| SYMBOL            | TEST CONDITIONS                                  | MINIMUM   | TYPICAL | MAXIMUM | UNITS   |
|-------------------|--|-----------|---------|---------|---------|
| $BV_{CBO}$        | $I_C = 50$ mA                                    | 36        |         |         | V       |
| $BV_{CES}$        | $I_C = 50$ mA                                    | 36        |         |         | V       |
| $BV_{CEO}$        | $I_C = 100$ mA                                   | 16        |         |         | V       |
| $BV_{EBO}$        | $I_E = 25$ mA                                    | 4.0       |         |         | V       |
| $I_{CES}$         | $V_{CE} = 18$ V                                  |           |         | 25.0    | mA      |
| $h_{FE}$          | $V_{CE} = 5.0$ V $I_C = 4.0$ A                   | 10        |         | 80      | ---     |
| $C_{ob}$          | $V_{CB} = 15$ V $f = 1.0$ MHz                    |           |         | 135     | pF      |
| $P_G$<br>$\eta_c$ | $V_{CC} = 12.5$ V $P_{OUT} = 45$ W $f = 175$ MHz | 4.5<br>75 |         |         | dB<br>% |

## X-ON Electronics

Largest Supplier of Electrical and Electronic Components

*Click to view similar products for* [RF Bipolar Transistors](#) *category:*

*Click to view products by* [Advanced Semiconductor](#) *manufacturer:*

Other Similar products are found below :

[MAPRST0912-50](#) [MCH4016-TL-H](#) [MMBT5551-G](#) [MRF10120](#) [15GN01CA-TB-E](#) [PH1214-25M](#) [MAPRST0912-350](#) [MMBTH10-TP](#) [BFP640F H6327](#) [BFP 720F H6327](#) [BFP 740F H6327](#) [BFR 360F H6765](#) [MRF10031](#) [NSVF4009SG4T1G](#) [BFP 182R E7764](#)  
[BFP405H6740XTSA1](#) [MRF10350](#) [BFR360FH6765XTSA1](#) [BFP410H6327XTSA1](#) [BFP620FH7764XTSA1](#) [BFP720ESDH6327XTSA1](#)  
[BFP720FH6327XTSA1](#) [BFR360L3E6765XTMA1](#) [BFP420H6433XTMA1](#) [BFP420H6740XTSA1](#) [BFP420H6801XTSA1](#) [MCH4015-TL-H](#)  
[BF888H6327XTSA1](#) [MMBT2222A-G](#) [BFP196WH6327XTSA1](#) [BFP405FH6327XTSA1](#) [BFP640ESDH6327XTSA1](#)  
[BFR193L3E6327XTMA1](#) [BFS483H6327XTSA1](#) [NSVF4020SG4T1G](#) [NSVF6003SB6T1G](#) [MRF10005](#) [BFP420FH6327XTSA1](#)  
[BFP740FESDH6327XTSA1](#) [BFR181E6327HTSA1](#) [BFR181WH6327XTSA1](#) [BFR182E6327HTSA1](#) [BFR193E6327HTSA1](#)  
[BFP181E7764HTSA1](#) [BFP183WH6327XTSA1](#) [BFP720H6327XTSA1](#) [BFR182WH6327XTSA1](#) [BFU590GX](#) [MAPR-000912-500S00](#)  
[BFR340FH6327XTSA1](#)