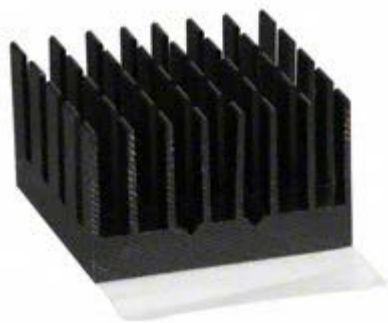


BGA Heat Sink - High Performance Cross-Cut Tape On



ATS Part#: **ATS-55250K-C1-R0**
 Description: 25.00 x 25.00 x 14.50 mm BGA Heat Sink - High Performance Cross-Cut Tape On

Heat Sink Type: **Cross-cut**
 Heat Sink Attachment: **Tape On**
 Equivalent Part Number: **ATS-55250K-C2-R0**

**Image above is for illustration purpose only.*

Features & Benefits

- High efficiency cross-cut fin design provides low pressure drop characteristics
- Large surface area increases heat sink performance
- Designed for BGAs and surface mount packages
- Comes preassembled with high performance thermal interface material

Thermal Performance

AIR VELOCITY		@200 LFM 1.0 M/S	@300 LFM 1.5 M/S	@400 LFM 2.0 M/S	@500 LFM 2.5 M/S	@600 LFM 3.0 M/S	@700 LFM 3.5 M/S	@800 LFM 4.0 M/S
THERMAL RESISTANCE	Unducted Flow	8.8 °C/W	NA °C/W	NA °C/W	NA °C/W	NA °C/W	NA °C/W	NA °C/W
	Ducted Flow	0	N/A	N/A	N/A	N/A	N/A	N/A

Product Detail

Schematic Image	Dimension A	Dimension B	Dimension C	Dimension D	TIM	Finish
<p><i>*Image above is for illustration purpose only.</i></p>	25.00 mm	25.00 mm	14.50 mm	N/A mm	T412	BLACK-ANODIZED
<p>Notes:</p> <ul style="list-style-type: none"> • Dimension A and B refer to component size. • Dimension C is the heat sink height from the bottom of the base to the top of the fin field. • ATS-55250K-C2-R0 is the exact heat sink assembly with an equivalent thermal interface material (Saint-Gobain C675). • Thermal performance data are provided for reference only. Actual performance may vary by application. • ATS reserves the right to update or change its products without notice to improve the design or performance. • ATS certifies that this heat sink assembly is RoHS-6 and REACH compliant. • Contact ATS to learn about custom options available. 						

For more information, to find a distributor or to place an order, please contact us at 781-769-2800 (North America), sales@qats.com or www.qats.com.

© 2013 Advanced Thermal Solutions, Inc. | 89-27 Access Road | Norwood MA | 02062 | USA



X-ON Electronics

Largest Supplier of Electrical and Electronic Components

Click to view similar products for [Heat Sinks](#) category:

Click to view products by [Advanced Thermal Solutions](#) manufacturer:

Other Similar products are found below :

[581102B00000G](#) [656-15ABPE](#) [657-20ABPNE](#) [7020B-TC12-MTG](#) [73452PPBA](#) [7G0011A](#) [PF720G](#) [A22-4026](#) [120-1873-007](#) [HAH10L](#)
[1542616-1](#) [HS-2506-F1](#) [HS-87M0-F2](#) [218-40CTE3](#) [25-7520](#) [SW50-4G](#) [231-75PAB-13V](#) [231-75PAB-15V](#) [253-122ABE-22](#) [PSC22CB](#)
[HAF10L](#) [HAQ10T](#) [D10100-28](#) [BDN183CBA01](#) [3-21053-4](#) [32438](#) [TX0506-1B](#) [TX1806B](#) [LAE66A3CB](#) [WA-DT2-101E](#) [511-3U](#)
[73381PPBA](#) [73403PPBA](#) [7G0047C](#) [COMX-440-HSP](#) [510-12M](#) [D10650-40T5](#) [V8511 Y](#) [APF40-40-13CB/A01](#) [780653U04500G](#) [ATS-](#)
[54310K-C2-R0](#) [FK 216 CB SA](#) [FK 231 SA 220](#) [648-51AB](#) [657-20ABPESC](#) [2341BG](#) [679-25AG](#) [FK 212 CB SA](#) [FK225 SA L1](#) [680-5K](#)