

BGA Heat Sink - High Performance fanSINK™



ATS Part#: **ATS-61600D-C2-R0**
Description: 63.00 x 63.00 x 9.50 mm BGA Heat Sink
 High Performance fanSINK™ with Push Pin Attachment
Max. Component Size: 50.00 x 50.00 mm
Heat Sink Type: fanSINK
Heat Sink Attachment: Push Pin
Equivalent Part Number: N/A



Features & Benefits

- » Cross-Cut straightFIN heatsink fins offer omnidirectional air flow for optimum thermal performance independent of PCB layout
- » Stainless steel screw fan attachment ensures dependable long-term fan to heat sink assembly. 4-40 thread screws are supplied in 4 lengths (1/2", 3/4", 7/8", 1"). Contact ATS for custom options available.
- » Fan assembly hole pattern is 40 mm C-C (center to center) - see Fig. 1
- » Screw PEM push pin attachment included
- » Provided with pre-assembled Thermal Interface Material (TIM) centered on base.
- » Recommended through hole size in PCB is 3.00 mm
- » Please Note: FANS NOT INCLUDED. Fan type is specific to each customer ap-

Image for illustration purposes only.

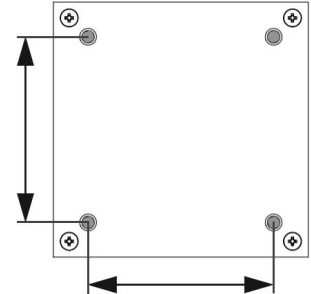


Fig. 1 - Measured dimensions of fan assembly hole pattern

Heat Sink Part No	L (mm)	W (mm)	H (mm)	Fan Sink Thermal Resistance (°C/W)			
ATS-61600D-C2-R0	63.0	63.0	9.5	1.20	1.14	1.06	1.06
ATS-61600K-C2-R0	63.0	63.0	14.5	0.73	0.83	0.69	0.67
ATS-61600R-C2-R0	63.0	63.0	19.5	0.60	0.65	0.52	0.56
ATS-61600W-C2-R0	63.0	63.0	24.5	0.50	0.54	0.47	0.49
FAN MANUFACTURER			Delta	Sunon	Delta	Sunon	
FAN PART NO.			EFB0512HHA-R00	MF50101V1-10000-A99	AUC0512DB-AF00	MF50151VX-1000U-F99	
FAN SIZE (mm)			50 X 50 X 10	50 X 50 X 10	50 X 50 X 15	50 X 50 X 15	

Product Details

SCHEMATIC IMAGE	Dimension A	Dimension B	Dimension C	Dimension D	Dimension E	TIM	Finish
	63 mm	63 mm	9.5 mm	54 mm	54 mm	Chomerics T766	Black

NOTES:

- 1) Fan not included. Fan type is specific to individual customer requirements and needs to be independently sourced.
- 2) Dimensions A and B refer to heat sink size.
- 3) Dimension C is the heat sink height from the bottom of the base to the top of the fin field.
- 4) Dimensions D and E refer to the push pin hole pattern C-C (center to center)
- 5) Thermal performance data are provided for reference only. Actual performance may vary by application.
- 6) ATS reserves the right to update or change its products without notice to improve the design or performance.
- 7) ATS certifies that this heat sink assembly is RoHS-6 and REACH compliant.
- 8) Contact ATS to learn about custom options available.

*All Images are for illustration purposes only.



For further technical information, please contact Advanced Thermal Solutions, Inc.

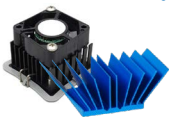
89-27 ACCESS ROAD, NORWOOD, MA 02062 USA | T: 781.769. 2800 ATS-HQ@QATS.COM | WWW.QATS.COM

BGA Heat Sink - High Performance fanSINK™ Series

PART NUMBER	HEAT SINK DIMENSIONS L x W x H (mm)	COMPONENT DIMENSIONS L x W (mm)	ATTACHMENT TYPE
ATS-61270D-C1-R0	27.0 x 27.0 x 9.5	27.0 x 27.0	Clip
ATS-61270K-C1-R0	27.0 x 27.0 x 14.5	27.0 x 27.0	Clip
ATS-61270R-C1-R0	27.0 x 27.0 x 19.5	27.0 x 27.0	Clip
ATS-61270W-C2-R0	27.0 x 27.0 x 24.5	27.0 x 27.0	Clip
ATS-61290D-C1-R0	29.0 x 29.0 x 9.5	29.0 x 29.0	Clip
ATS-61290K-C1-R0	29.0 x 29.0 x 14.5	29.0 x 29.0	Clip
ATS-61290R-C1-R0	29.0 x 29.0 x 19.5	29.0 x 29.0	Clip
ATS-61290W-C2-R0	29.0 x 29.0 x 24.5	29.0 x 29.0	Clip
ATS-61300D-C1-R0	30.0 x 30.0 x 9.5	30.0 x 30.0	Clip
ATS-61300K-C1-R0	30.0 x 30.0 x 14.5	30.0 x 30.0	Clip
ATS-61300R-C1-R0	30.0 x 30.0 x 19.5	30.0 x 30.0	Clip
ATS-61300W-C2-R0	30.0 x 30.0 x 24.5	30.0 x 30.0	Clip
ATS-61310D-C1-R0	31.0 x 31.0 x 9.5	31.0 x 31.0	Clip
ATS-61310K-C1-R0	31.0 x 31.0 x 14.5	31.0 x 31.0	Clip
ATS-61310R-C1-R0	31.0 x 31.0 x 19.5	31.0 x 31.0	Clip
ATS-61310W-C2-R0	31.0 x 31.0 x 24.5	31.0 x 31.0	Clip
ATS-61325D-C1-R0	32.5 x 32.5 x 9.5	32.5 x 32.5	Clip
ATS-61325K-C1-R0	32.5 x 32.5 x 14.5	32.5 x 32.5	Clip
ATS-61325R-C1-R0	32.5 x 32.5 x 19.5	32.5 x 32.5	Clip
ATS-61325W-C2-R0	32.5 x 32.5 x 24.5	32.5 x 32.5	Clip
ATS-61330D-C1-R0	33.0 x 33.0 x 9.5	33.0 x 33.0	Clip
ATS-61330K-C1-R0	33.0 x 33.0 x 14.5	33.0 x 33.0	Clip
ATS-61330R-C1-R0	33.0 x 33.0 x 19.5	33.0 x 33.0	Clip
ATS-61330W-C2-R0	33.0 x 33.0 x 24.5	33.0 x 33.0	Clip
ATS-61350D-C1-R0	35.0 x 35.0 x 9.5	35.0 x 35.0	Clip
ATS-61350K-C1-R0	35.0 x 35.0 x 14.5	35.0 x 35.0	Clip
ATS-61350R-C1-R0	35.0 x 35.0 x 19.5	35.0 x 35.0	Clip
ATS-61350W-C2-R0	35.0 x 35.0 x 24.5	35.0 x 35.0	Clip
ATS-61375D-C1-R0	37.5 x 37.5 x 9.5	37.5 x 37.5	Clip
ATS-61375K-C1-R0	37.5 x 37.5 x 14.5	37.5 x 37.5	Clip
ATS-61375R-C1-R0	37.5 x 37.5 x 19.5	37.5 x 37.5	Clip
ATS-61375W-C2-R0	37.5 x 37.5 x 24.5	37.5 x 37.5	Clip

PART NUMBER	HEAT SINK DIMENSIONS L x W x H (mm)	COMPONENT DIMENSIONS L x W (mm)	ATTACHMENT TYPE
ATS-61400D-C1-R0	40.0 x 40.0 x 9.5	40.0 x 40.0	Clip
ATS-61400K-C1-R0	40.0 x 40.0 x 14.5	40.0 x 40.0	Clip
ATS-61400R-C1-R0	40.0 x 40.0 x 19.5	40.0 x 40.0	Clip
ATS-61400W-C2-R0	40.0 x 40.0 x 24.5	40.0 x 40.0	Clip
ATS-61425D-C1-R0	42.5 x 42.5 x 9.5	42.5 x 42.5	Clip
ATS-61425K-C1-R0	42.5 x 42.5 x 14.5	42.5 x 42.5	Clip
ATS-61425R-C1-R0	42.5 x 42.5 x 19.5	42.5 x 42.5	Clip
ATS-61425W-C2-R0	42.5 x 42.5 x 24.5	42.5 x 42.5	Clip
ATS-61450D-C1-R0	45.0 x 45.0 x 9.5	45.0 x 45.0	Clip
ATS-61450K-C1-R0	45.0 x 45.0 x 14.5	45.0 x 45.0	Clip
ATS-61450R-C1-R0	45.0 x 45.0 x 19.5	45.0 x 45.0	Clip
ATS-61450W-C2-R0	45.0 x 45.0 x 24.5	45.0 x 45.0	Clip
ATS-61500D-C2-R0	53.0 x 53.0 x 9.5	40.0 x 40.0	Push Pin
ATS-61500K-C2-R0	53.0 x 53.0 x 14.5	40.0 x 40.0	Push Pin
ATS-61500R-C2-R0	53.0 x 53.0 x 19.5	40.0 x 40.0	Push Pin
ATS-61500W-C2-R0	53.0 x 53.0 x 24.5	40.0 x 40.0	Push Pin
ATS-61600D-C2-R0	63.0 x 63.0 x 9.5	50.0 x 50.0	Push Pin
ATS-61600K-C2-R0	63.0 x 63.0 x 14.5	50.0 x 50.0	Push Pin
ATS-61600R-C2-R0	63.0 x 63.0 x 19.5	50.0 x 50.0	Push Pin
ATS-61600W-C2-R0	63.0 x 63.0 x 24.5	50.0 x 50.0	Push Pin
ATS-61700D-C2-R0	74.0 x 74.0 x 9.5	60.0 x 60.0	Push Pin
ATS-61700K-C2-R0	74.0 x 74.0 x 14.5	60.0 x 60.0	Push Pin
ATS-61700R-C2-R0	74.0 x 74.0 x 19.5	60.0 x 60.0	Push Pin
ATS-61700W-C2-R0	74.0 x 74.0 x 24.5	60.0 x 60.0	Push Pin
ATS-61800D-C2-R0	84.0 x 84.0 x 9.5	70.0 x 70.0	Push Pin
ATS-61800K-C2-R0	84.0 x 84.0 x 14.5	70.0 x 70.0	Push Pin
ATS-61800R-C2-R0	84.0 x 84.0 x 19.5	70.0 x 70.0	Push Pin
ATS-61800W-C2-R0	84.0 x 84.0 x 24.5	70.0 x 70.0	Push Pin

ATS is a leading-edge engineering and manufacturing company focused on the complex thermal management issues of electronics cooling. Our goal is to be our customers' value-added supplier and success partner for all thermal management needs: analysis, testing & final product.



Heat Sinks



Instruments



Wind Tunnels



Liquid Cooling



Heat Pipes



Thermoelectric Coolers



VOSTOK Freezers



VortX Air Cleansers

X-ON Electronics

Largest Supplier of Electrical and Electronic Components

Click to view similar products for [Heat Sinks](#) category:

Click to view products by [Advanced Thermal Solutions](#) manufacturer:

Other Similar products are found below :

[581102B00000G](#) [656-15ABPE](#) [657-20ABPNE](#) [7020B-TC12-MTG](#) [73452PPBA](#) [7G0011A](#) [PF720G](#) [A22-4026](#) [120-1873-007](#) [HAH10L](#)
[HAH15L](#) [HF20](#) [1542616-1](#) [HS-2506-F1](#) [HS-87M0-F2](#) [218-40CTE3](#) [231-69PAB-15V](#) [25-7520](#) [SW50-4G](#) [231-75PAB-13V](#) [231-75PAB-](#)
[15V](#) [253-122ABE-22](#) [PSC22CB](#) [CLP212SG](#) [CLP-7701G](#) [HAA083](#) [HAF10L](#) [HAQ10T](#) [D10100-28](#) [BDN183CBA01](#) [3-21053-4](#) [32438](#)
[TX0506-1B](#) [TX1806B](#) [LAE66A3CB](#) [WA-DT2-101E](#) [511-3U](#) [73381PPBA](#) [73403PPBA](#) [7G0047C](#) [COMX-440-HSP](#) [510-12M](#) [D10650-](#)
[40T5](#) [V8511 Y](#) [APF40-40-13CB/A01](#) [780653U04500G](#) [ATS-54310K-C2-R0](#) [FK 216 CB SA](#) [FK 231 SA 220](#) [648-51AB](#)