



# IGBT Cold Plates

## High Performance

### ATS-CP-1000

ATS IGBT cold plates have unmatched thermal performance because of their mini-channel fin design. The ATS-CP-1000 cold plate, at a flow rate of 4 L/min, can transfer 1kW of heat at 5.5°C temperature difference between the cold plate base and inlet fluid temperature. If the coolant has particles, a #60 filter or finer is recommended to remove possible particles in the liquid.

#### FEATURES AND BENEFITS

- » More than 30% improvement in thermal performance compared to commercially available cold plates
- » Compatible with industry accepted coolants
- » 1/4 NPT threaded input and output
- » Low pressure drop
- » Lightweight for ease of transportation
- » Provides uniform cold plate surface temperature when IGBTs are installed
- » Maximum pressure: 60 psi
- » **Applications:** Automotive Industry, Uninterruptible Power Supplies, Wind Turbines, Photovoltaic Inverters, Power Electronics, Induction Heaters, Motor Devices, Utility Vehicles, Anywhere power devices are used



*Image for illustration purposes only*

#### DIMENSIONS (L X W X H)

202 X 130 X 20 mm  
(7.9 X 5.1 X 0.8")

#### INLET/OUTPUT PORTS

1/4 – 18 NPT

#### MATERIAL

1ALUMINUM, UNFINISHED

#### WEIGHT

1,200g

#### ATS COLD PLATES

##### » Innovative Technology

Superior heat transfer, flexible design platform

##### » Compact Design

Designed to fit standard IGBT and other power electronics applications

##### » Easy Connections

Industry standard threaded hole sizes allows for hassle-free connection options

##### » Safe & Reliable

Leak Free (100% tested:100 psi)

##### » Custom Options

Choose from various options, i.e; fitting types, material types, device mounting and more. Contact ATS for additional information

##### » Customization Available!

ATS will customize any of the cold plates to fit into your application

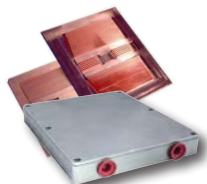
#### ADDITIONAL COMPONENTS DEPLOYED IN LIQUID COOLING LOOPS



Flow Meter



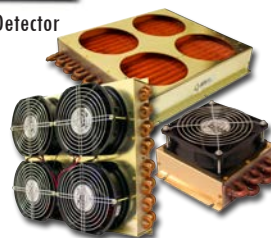
Leak Detector



Cold Plates



Chillers



Heat Exchangers

ATS has the products needed to design a complete liquid cooling loop: **Cold Plates** to transfer and remove the heat from the source, **Heat Exchangers** to transfer heat from the liquid to the air with or without a fan, and **Chillers** to circulate and condition the fluid in the system. In addition, ATS offers **Flow Meters** to instantaneously measure the volumetric flow rate of the fluid in the system and **Leak Detectors** to notify users of any leaks in the system.

#### IGBT COMPATIBILITY

- » Semikron SemiTRANS® Case D56
- » Infineon 62mm Pkg
- » Fuji Semiconductor M127 M234 and M235 Pkg
- » Powerex 62mm Pkg
- » Other IGBTs or high power devices

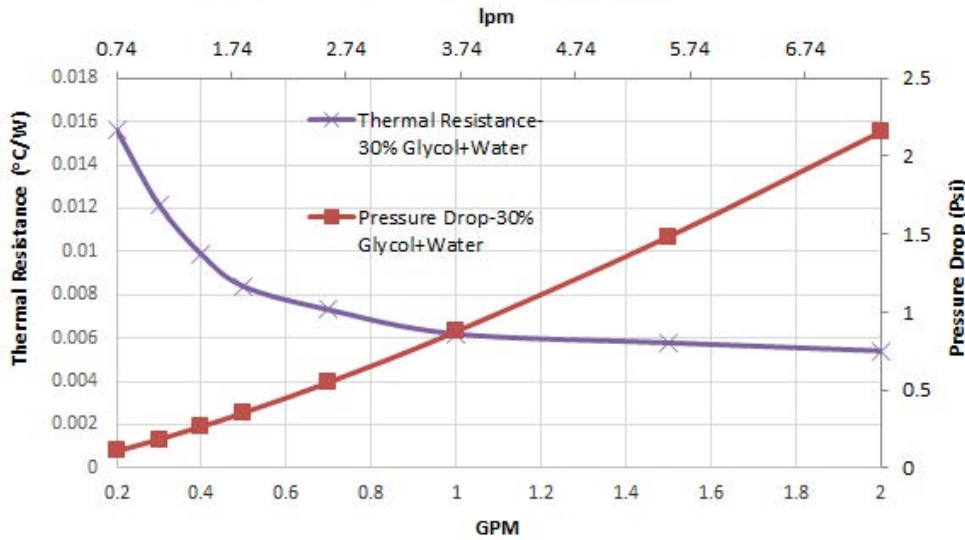




**ATS-CP-1000**

**PERFORMANCE CURVES**

**Thermal Resistance And Pressure Drop ATS-CP-1000**



ATS Cold Plate Family			
Part Number	Dimensions* (L x W x H)	Flow Rate (L/min)	ΔT @ 1kW
ATS-CP-1000	202 x 130 x 20	4 L/min	5.50°C
ATS-CP-1001	198 x 147 x 20	4 L/min	5.00°C
ATS-CP-1002	162 x 136 x 20	4 L/min	7.00°C
ATS-CP-1003	162 x 147 x 20	4 L/min	6.80°C
ATS-CP-1004	162 x 172 x 20	4 L/min	5.90°C

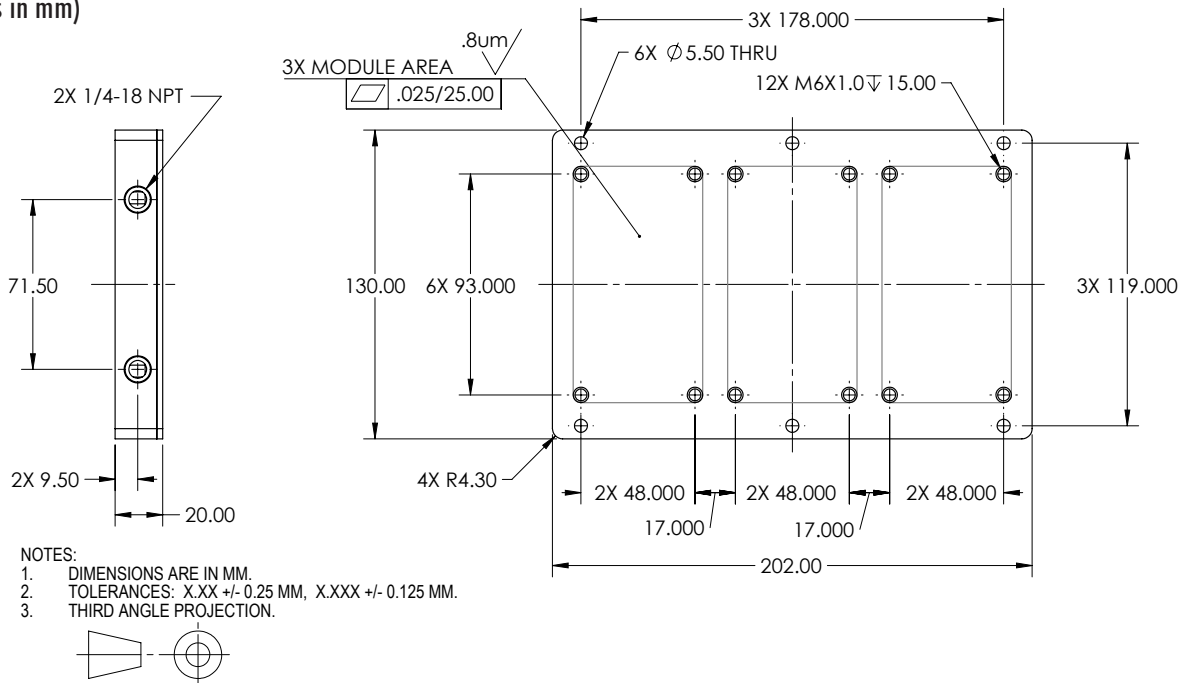
Flow rate (gallon/min)**	R (°C/W)	DeltaP (psi)
2	0.0054	2.2
1	0.0062	0.87
0.5	0.0083	0.35
0.2	0.016	0.1

\* All Dimensions in mm

\*\* Note: To convert to l/min, multiply by 3.7

**MECHANICAL SPECIFICATIONS**

(all dimensions in mm)



For further technical information, please contact Advanced Thermal Solutions, Inc. by phone: 1-781-769-2800, email [ats-hq@qats.com](mailto:ats-hq@qats.com) or visit [www.qats.com](http://www.qats.com).

## X-ON Electronics

Largest Supplier of Electrical and Electronic Components

*Click to view similar products for [Heat Sinks](#) category:*

*Click to view products by [Advanced Thermal Solutions](#) manufacturer:*

Other Similar products are found below :

[581102B00000G](#) [656-15ABPE](#) [657-20ABPNE](#) [7020B-TC12-MTG](#) [73452PPBA](#) [7G0011A](#) [PF720G](#) [A22-4026](#) [120-1873-007](#) [HAH10L](#)  
[HAH15L](#) [1542616-1](#) [HS-2506-F1](#) [HS-87M0-F2](#) [218-40CTE3](#) [231-69PAB-15V](#) [25-7520](#) [SW50-4G](#) [231-75PAB-13V](#) [231-75PAB-15V](#) [253-](#)  
[122ABE-22](#) [PSC22CB](#) [HAF10L](#) [HAQ10T](#) [D10100-28](#) [BDN183CBA01](#) [3-21053-4](#) [32438](#) [TX0506-1B](#) [TX1806B](#) [LAE66A3CB](#) [WA-DT2-](#)  
[101E](#) [511-3U](#) [73381PPBA](#) [73403PPBA](#) [7G0047C](#) [COMX-440-HSP](#) [510-12M](#) [D10650-40T5](#) [V8511 Y](#) [APF40-40-13CB/A01](#)  
[780653U04500G](#) [ATS-54310K-C2-R0](#) [FK 216 CB SA](#) [FK 231 SA 220](#) [648-51AB](#) [657-20ABPESC](#) [2341BG](#) [679-25AG](#) [FK 212 CB SA](#)