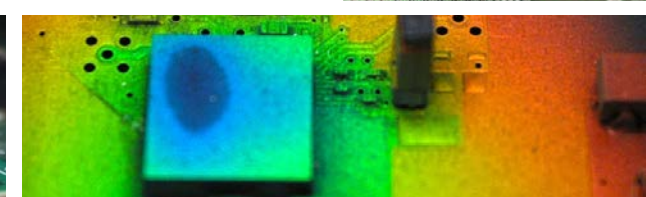
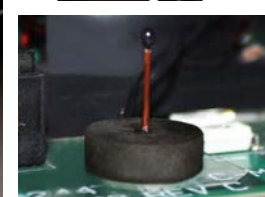
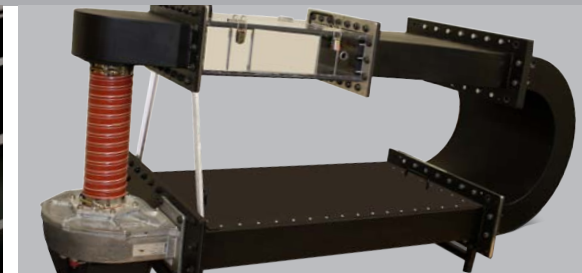
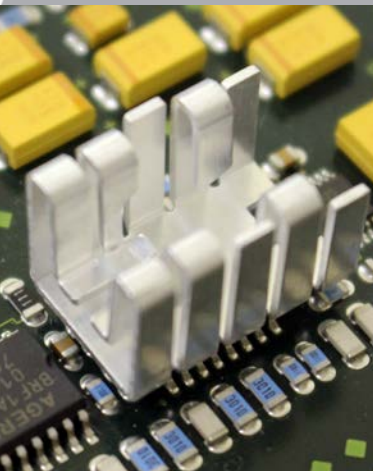


Standard Board Level Heat Sink Catalog

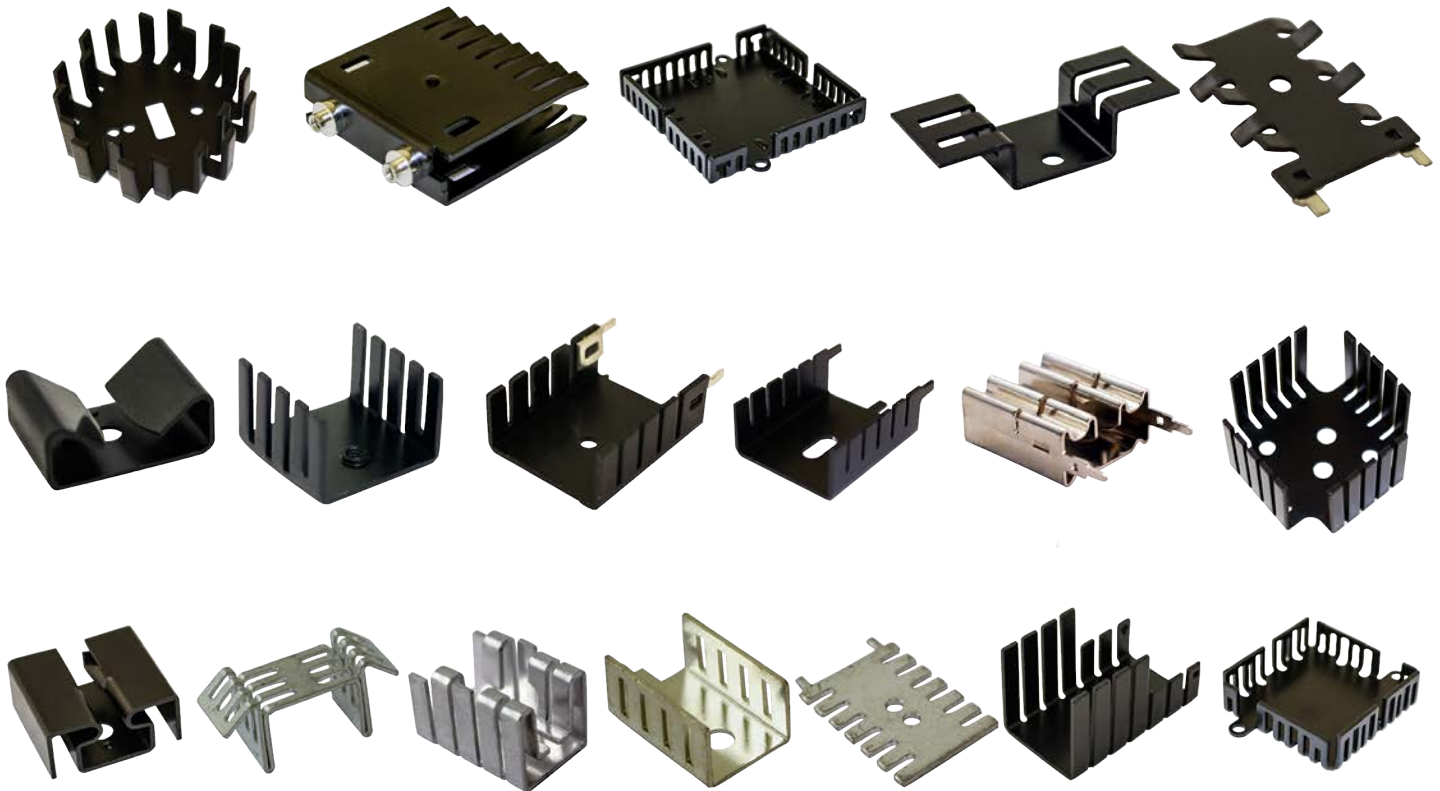


89-27 Access Road, Norwood, MA 02062
T: 781.769.2800 F: 781.769.9979 | www.qats.com



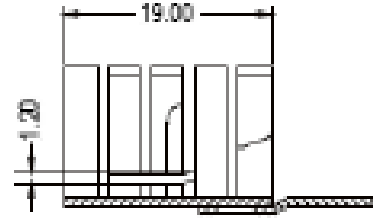
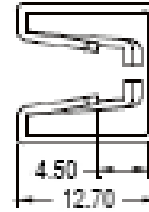
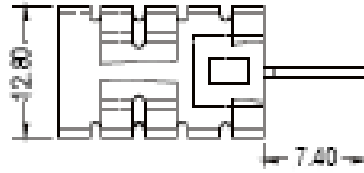
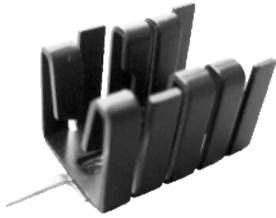
ATS ADVANCED
THERMAL
SOLUTIONS, INC.
Innovations in Thermal Management®

STAMPED STANDARD HEAT SINKS



- » PC Board Level Standard Heat Sinks
- » Standard for TO220s, TO-3s, TO-5s, TO-126s, TO-127s, TO-202s, TO-218s
- » Aluminum anodized material with solderable tabs or aluminum tin plated, copper tin plated
- » Clips, Nuts, or Thermal pad optional

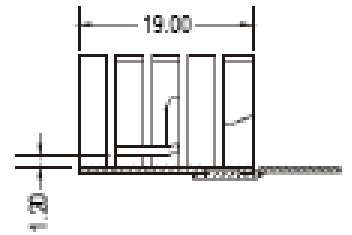
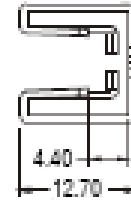
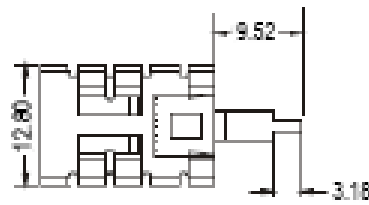
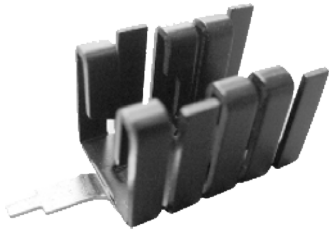
ATS-PCB1001



Product Details

Length (mm)	Width (mm)	Height (mm)	Tim	Material	Finish	Packaged Cooled	Thermal Resistance (Natural Convection)	R @ 200 LFM	R @ 400 LFM	R @ 600 LFM	R @ 800 LFM
19	12.8	12.7	No TIM	Aluminum	Blk Anodized	TO-220,TO-262	27.3	10.2	7.0	5.7	4.8

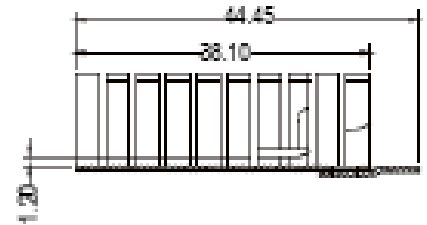
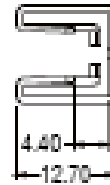
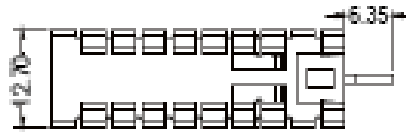
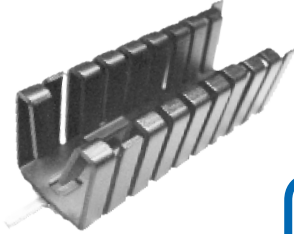
ATS-PCB1002



Product Details

Length (mm)	Width (mm)	Height (mm)	Tim	Material	Finish	Packaged Cooled	Thermal Resistance (Natural Convection)	R @ 200 LFM	R @ 400 LFM	R @ 600 LFM	R @ 800 LFM
19	12.8	12.7	No TIM	Aluminum	Blk Anodized	TO-220,TO-262	27.3	10.2	7.0	5.7	4.8

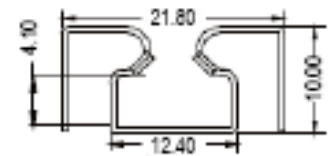
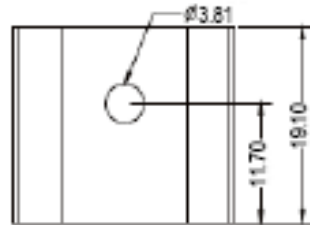
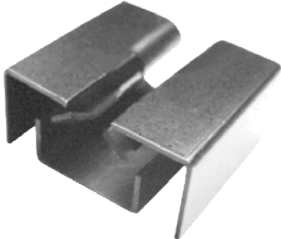
ATS-PCB1003



Product Details

Length (mm)	Width (mm)	Height (mm)	Tim	Material	Finish	Packaged Cooled	Thermal Resistance (Natural Convection)	R @ 200 LFM	R @ 400 LFM	R @ 600 LFM	R @ 800 LFM
38.1	12.7	12.7	No TIM	Aluminum	Blk Anodized	TO-220	20.0	7.0	4.6	3.7	3.0

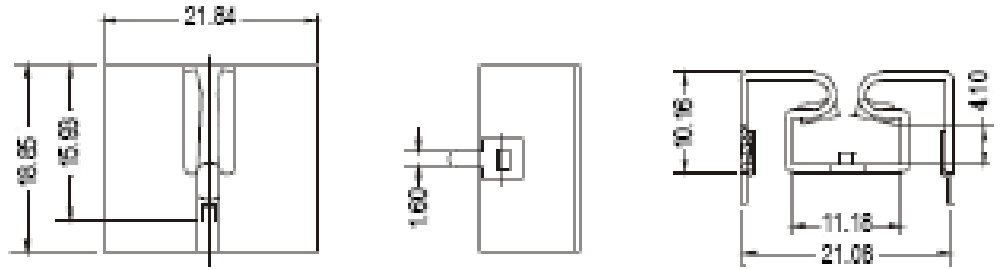
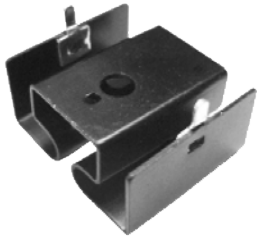
ATS-PCB1004



Product Details

Length (mm)	Width (mm)	Height (mm)	Tim	Material	Finish	Packaged Cooled	Thermal Resistance (Natural Convection)	R @ 200 LFM	R @ 400 LFM	R @ 600 LFM	R @ 800 LFM
19.1	21.8	10.0	No TIM	Aluminum	Blk Anodized	TO-220	23.2	12.7	9.0	7.0	5.6

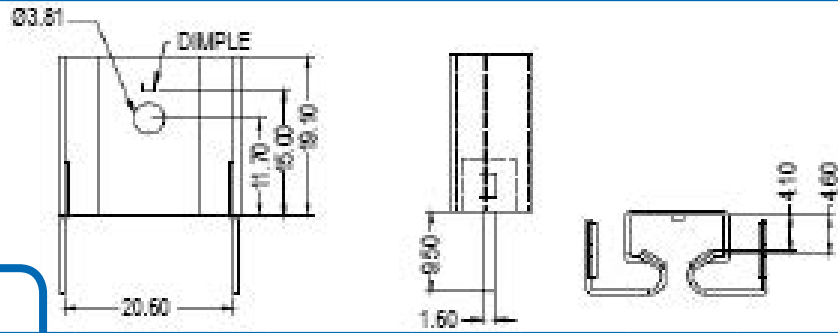
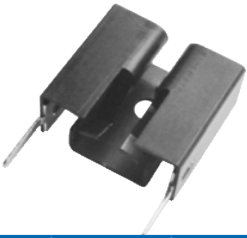
ATS-PCB1005



Product Details

Length (mm)	Width (mm)	Height (mm)	Tim	Material	Finish	Packaged Cooled	Thermal Resistance (Natural Convection)	R @ 200 LFM	R @ 400 LFM	R @ 600 LFM	R @ 800 LFM
18.9	21.8	10.	No TIM	Aluminum	Blk Anodized	TO-220	23.2	12.0	8.2	6.0	4.2

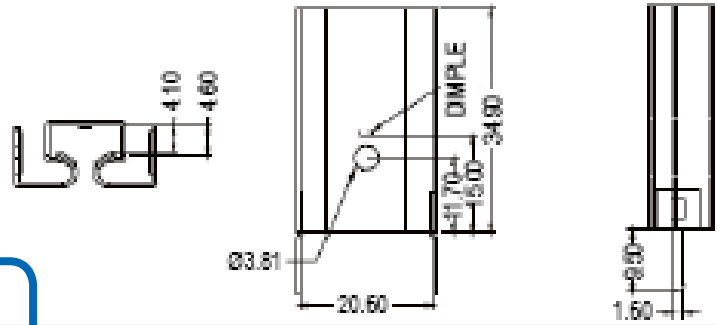
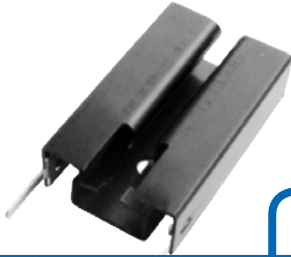
ATS-PCB1006



Product Details

Length (mm)	Width (mm)	Height (mm)	Tim	Material	Finish	Packaged Cooled	Thermal Resistance (Natural Convection)	R @ 200 LFM	R @ 400 LFM	R @ 600 LFM	R @ 800 LFM
19.1	21.8	9.9	No TIM	Aluminum	Blk Anodized	TO-220	21.2	11.0	8.0	6.0	4.8

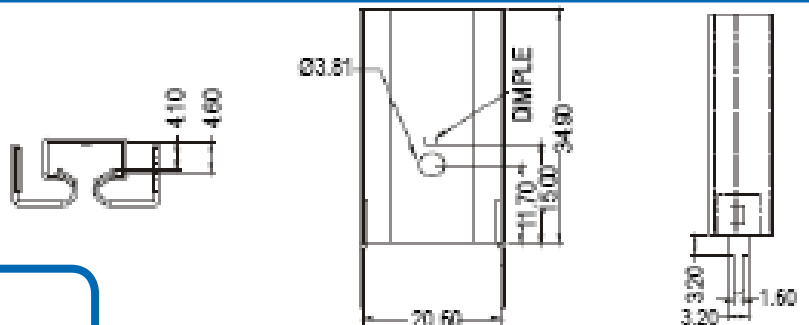
ATS-PCB1007



Product Details

Length (mm)	Width (mm)	Height (mm)	Tim	Material	Finish	Packaged Cooled	Thermal Resistance (Natural Convection)	R @ 200 LFM	R @ 400 LFM	R @ 600 LFM	R @ 800 LFM
34.9	21.8	10.0	No TIM	Aluminum	Blk Anodized	TO-220	16.0	11.0	8.0	6.0	4.8

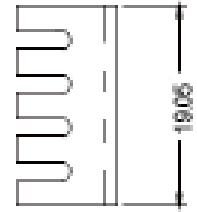
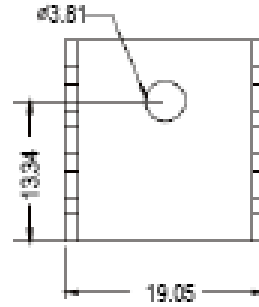
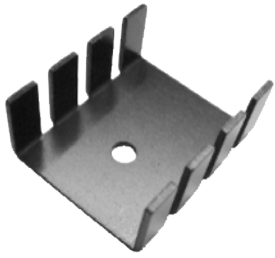
ATS-PCB1008



Product Details

Length (mm)	Width (mm)	Height (mm)	Tim	Material	Finish	Packaged Cooled	Thermal Resistance (Natural Convection)	R @ 200 LFM	R @ 400 LFM	R @ 600 LFM	R @ 800 LFM
34.9	21.8	10.0	No TIM	Aluminum	Blk Anodized	TO-220	16.0	11.0	8.0	6.0	4.8

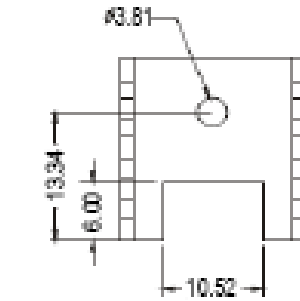
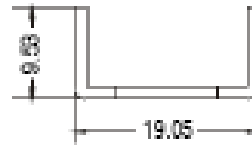
ATS-PCB1009



Product Details

Length (mm)	Width (mm)	Height (mm)	Tim	Material	Finish	Packaged Cooled	Thermal Resistance (Natural Convection)	R @ 200 LFM	R @ 400 LFM	R @ 600 LFM	R @ 800 LFM
19.	19.	9.5	No TIM	Aluminum	Blk Anodized	TO-220	24.0	10.0	6.1	5.0	4.0

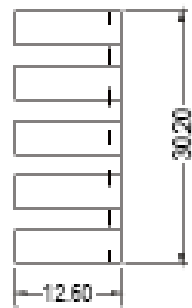
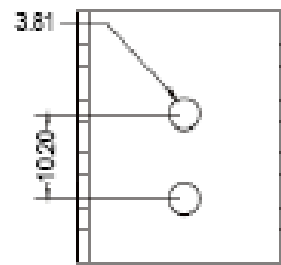
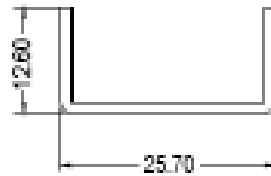
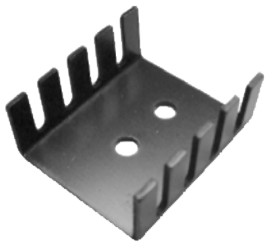
ATS-PCB1010



Product Details

Length (mm)	Width (mm)	Height (mm)	Tim	Material	Finish	Packaged Cooled	Thermal Resistance (Natural Convection)	R @ 200 LFM	R @ 400 LFM	R @ 600 LFM	R @ 800 LFM
19.	19.	9.5	No TIM	Aluminum	Blk Anodized	TO-220	24.0	10.0	6.1	5.0	4.0

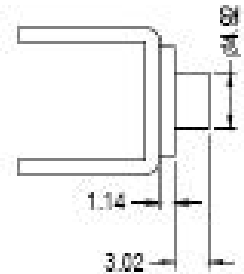
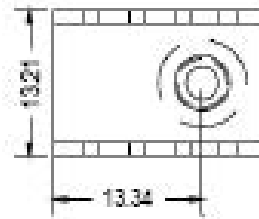
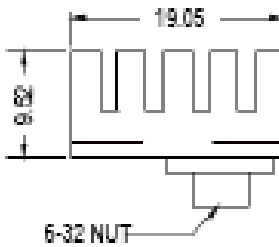
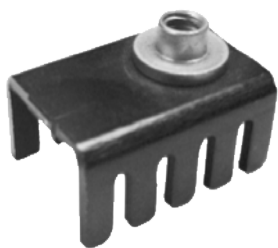
ATS-PCB1011



Product Details

Length (mm)	Width (mm)	Height (mm)	Tim	Material	Finish	Packaged Cooled	Thermal Resistance (Natural Convection)	R @ 200 LFM	R @ 400 LFM	R @ 600 LFM	R @ 800 LFM
30.2	25.7	12.6	No TIM	Aluminum	Blk Anodized	TO-220	16.7	11.0	7.8	6.0	5.1

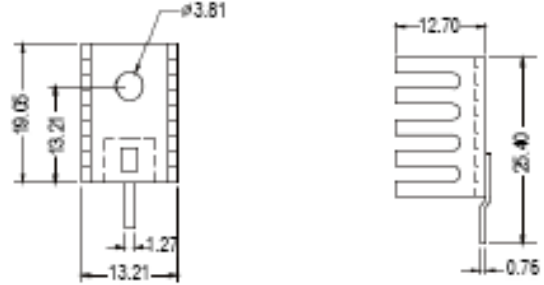
ATS-PCB1012



Product Details

Length (mm)	Width (mm)	Height (mm)	Tim	Material	Finish	Packaged Cooled	Thermal Resistance (Natural Convection)	R @ 200 LFM	R @ 400 LFM	R @ 600 LFM	R @ 800 LFM
19.	13.2	9.5	No TIM	Aluminum	Blk Anodized	TO-220	25.9	12.0	8.1	7.4	7.1

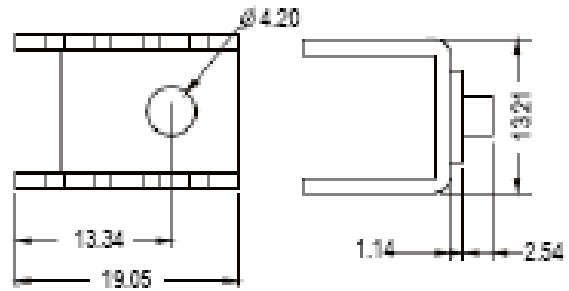
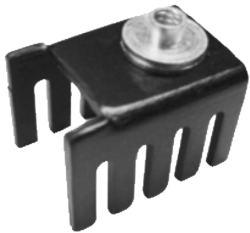
ATS-PCB1013



Product Details

Length (mm)	Width (mm)	Height (mm)	Tim	Material	Finish	Packaged Cooled	Thermal Resistance (Natural Convection)	R @ 200 LFM	R @ 400 LFM	R @ 600 LFM	R @ 800 LFM
19.	13.2	12.7	No TIM	Aluminum	Blk Anodized	TO-220	24.4	9.5	6.8	6.4	6.0

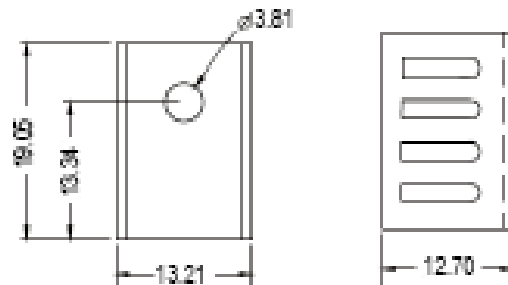
ATS-PCB1014



Product Details

Length (mm)	Width (mm)	Height (mm)	Tim	Material	Finish	Packaged Cooled	Thermal Resistance (Natural Convection)	R @ 200 LFM	R @ 400 LFM	R @ 600 LFM	R @ 800 LFM
19.	13.2	12.7	No TIM	Aluminum	Blk Anodized	TO-220	24.4	9.5	6.8	6.4	6.0

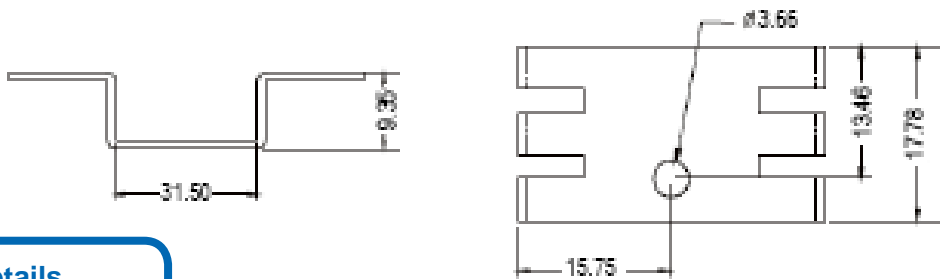
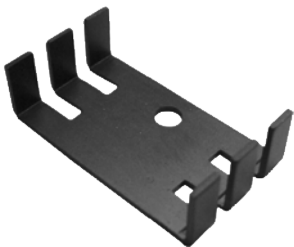
ATS-PCB1015



Product Details

Length (mm)	Width (mm)	Height (mm)	Tim	Material	Finish	Packaged Cooled	Thermal Resistance (Natural Convection)	R @ 200 LFM	R @ 400 LFM	R @ 600 LFM	R @ 800 LFM
19.	13.2	12.7	No TIM	Aluminum	Blk Anodized	TO-220	25.0	10.2	7.5	6.1	6.0

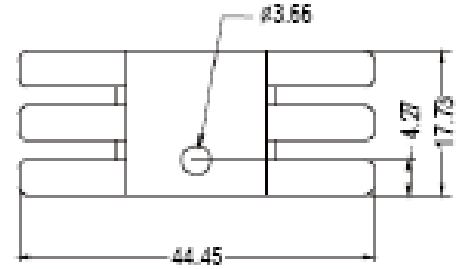
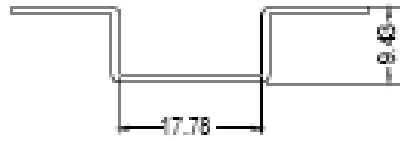
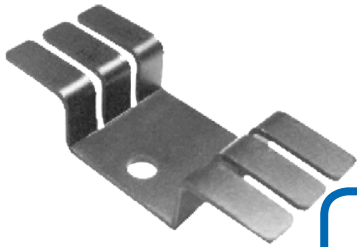
ATS-PCB1016



Product Details

Length (mm)	Width (mm)	Height (mm)	Tim	Material	Finish	Packaged Cooled	Thermal Resistance (Natural Convection)	R @ 200 LFM	R @ 400 LFM	R @ 600 LFM	R @ 800 LFM
17.8	31.5	9.4	No TIM	Aluminum	Blk Anodized	TO-220	20.6	12.5	10.0	8.9	8.2

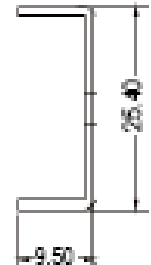
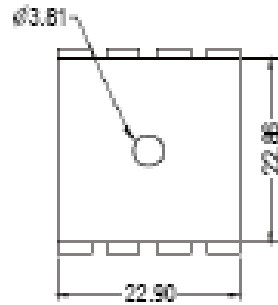
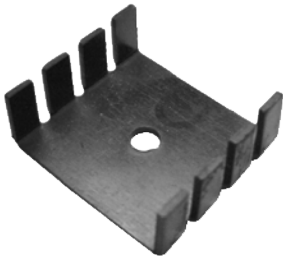
ATS-PCB1017



Product Details

Length (mm)	Width (mm)	Height (mm)	Tim	Material	Finish	Packaged Cooled	Thermal Resistance (Natural Convection)	R @ 200 LFM	R @ 400 LFM	R @ 600 LFM	R @ 800 LFM
17.7	44.5	9.4	No TIM	Aluminum	Blk Anodized	TO-220, TO-202	15.6	7.1	5.5	4.2	3.2

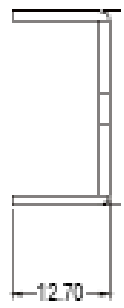
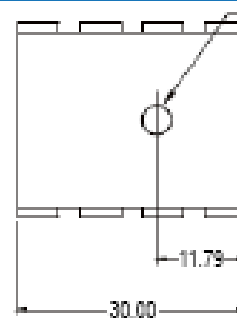
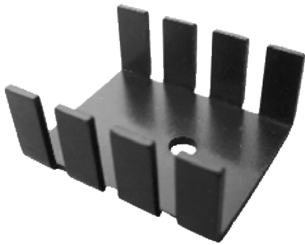
ATS-PCB1018



Product Details

Length (mm)	Width (mm)	Height (mm)	Tim	Material	Finish	Packaged Cooled	Thermal Resistance (Natural Convection)	R @ 200 LFM	R @ 400 LFM	R @ 600 LFM	R @ 800 LFM
22.9	25.4	9.5	No TIM	Aluminum	Blk Anodized	TO-220	20.8	8.1	5.3	4.1	3.8

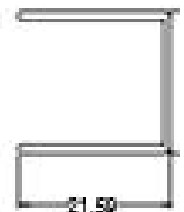
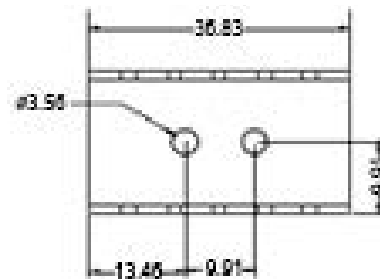
ATS-PCB1019



Product Details

Length (mm)	Width (mm)	Height (mm)	Tim	Material	Finish	Packaged Cooled	Thermal Resistance (Natural Convection)	R @ 200 LFM	R @ 400 LFM	R @ 600 LFM	R @ 800 LFM
30.0	25.4	12.7	No TIM	Aluminum	Blk Anodized	TO-220, TO-202, TO-220	22.0	10.1	7.0	5.0	4.2

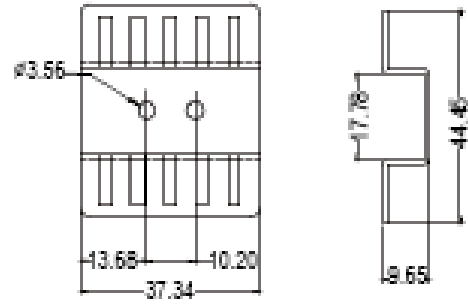
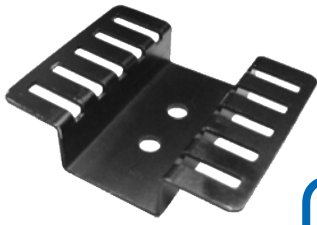
ATS-PCB1020



Product Details

Length (mm)	Width (mm)	Height (mm)	Tim	Material	Finish	Packaged Cooled	Thermal Resistance (Natural Convection)	R @ 200 LFM	R @ 400 LFM	R @ 600 LFM	R @ 800 LFM
36.8	19.8	21.6	No TIM	Aluminum	Blk Anodized	TO-220	6.4	5.0	3.5	2.2	1.9

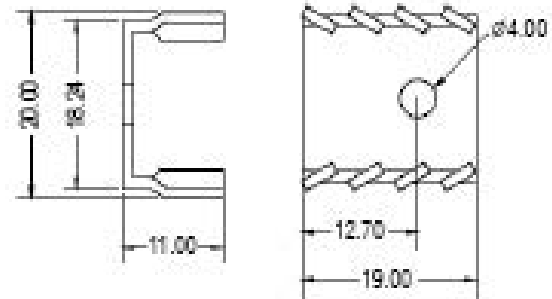
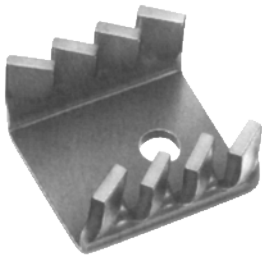
ATS-PCB1021



Product Details

Length (mm)	Width (mm)	Height (mm)	Tim	Material	Finish	Packaged Cooled	Thermal Resistance (Natural Convection)	R @ 200 LFM	R @ 400 LFM	R @ 600 LFM	R @ 800 LFM
37.3	44.5	9.7	No TIM	Aluminum	Blk Anodized	TO-220	9.6	3.0	1.8	1.0	0.9

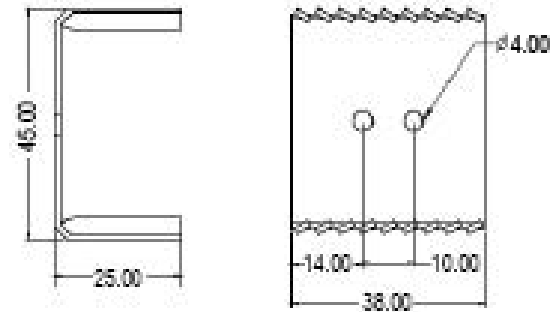
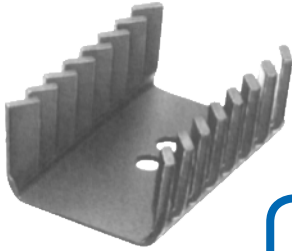
ATS-PCB1022



Product Details

Length (mm)	Width (mm)	Height (mm)	Tim	Material	Finish	Packaged Cooled	Thermal Resistance (Natural Convection)	R @ 200 LFM	R @ 400 LFM	R @ 600 LFM	R @ 800 LFM
19.0	20.0	11.0	No TIM	Aluminum	Blk Anodized	TO-220	30.0	20.0	14.0	11.0	9.0

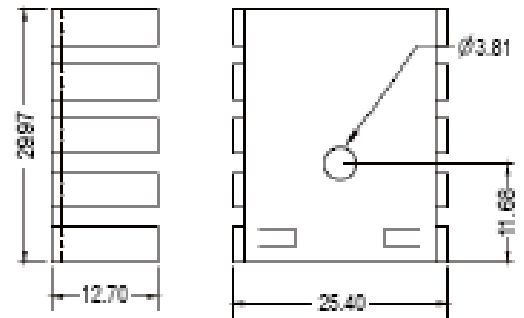
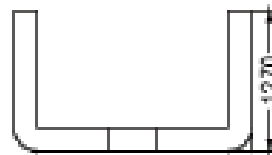
ATS-PCB1023



Product Details

Length (mm)	Width (mm)	Height (mm)	Tim	Material	Finish	Packaged Cooled	Thermal Resistance (Natural Convection)	R @ 200 LFM	R @ 400 LFM	R @ 600 LFM	R @ 800 LFM
38.0	45.0	25.0	No TIM	Aluminum	Blk Anodized	TO-220	7.2	4.8	3.7	3.0	2.8

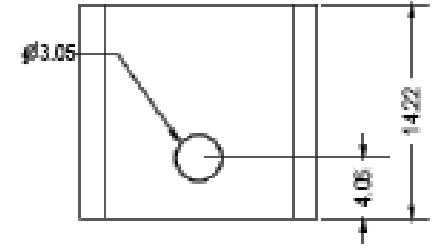
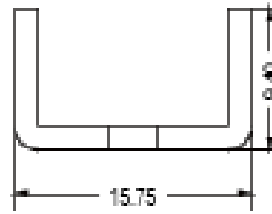
ATS-PCB1024



Product Details

Length (mm)	Width (mm)	Height (mm)	Tim	Material	Finish	Packaged Cooled	Thermal Resistance (Natural Convection)	R @ 200 LFM	R @ 400 LFM	R @ 600 LFM	R @ 800 LFM
30.0	25.4	12.7	No TIM	Aluminum	Blk Anodized	TO-220	16.7	11.0	7.8	6.0	5.1

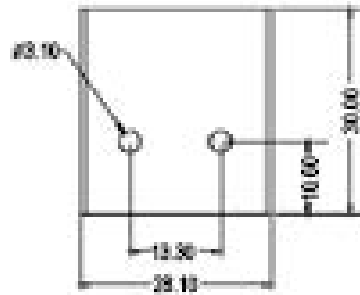
ATS-PCB1025



Product Details

Length (mm)	Width (mm)	Height (mm)	Tim	Material	Finish	Packaged Cooled	Thermal Resistance (Natural Convection)	R @ 200 LFM	R @ 400 LFM	R @ 600 LFM	R @ 800 LFM
14.2	15.8	9.4	No TIM	Aluminum	Blk Anodized	TO-126	33.0	19.0	14.2	11.8	11.0

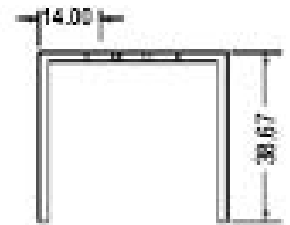
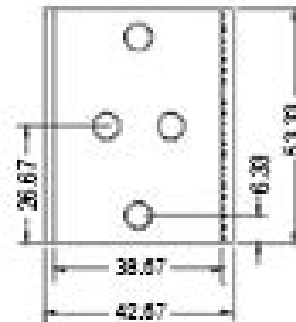
ATS-PCB1026



Product Details

Length (mm)	Width (mm)	Height (mm)	Tim	Material	Finish	Packaged Cooled	Thermal Resistance (Natural Convection)	R @ 200 LFM	R @ 400 LFM	R @ 600 LFM	R @ 800 LFM
30.0	28.1	23.0	No TIM	Aluminum	Blk Anodized	TO-220	13.0	7.1	4.4	4.0	3.9

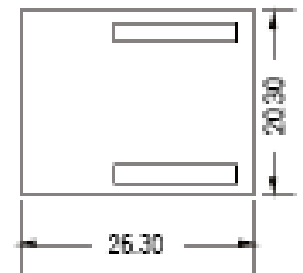
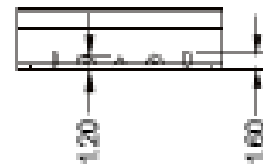
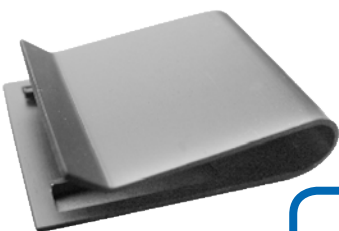
ATS-PCB1027



Product Details

Length (mm)	Width (mm)	Height (mm)	Tim	Material	Finish	Packaged Cooled	Thermal Resistance (Natural Convection)	R @ 200 LFM	R @ 400 LFM	R @ 600 LFM	R @ 800 LFM
53.3	42.7	38.7	No TIM	Aluminum	Blk Anodized	TO-220	10.0	6.0	4.0	3.5	2.6

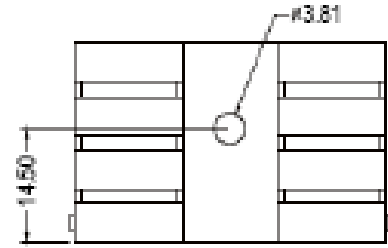
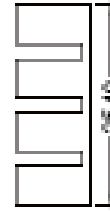
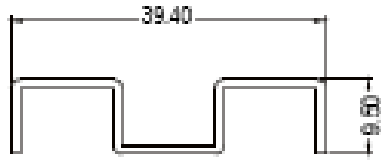
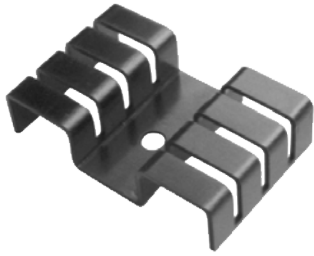
ATS-PCB1028



Product Details

Length (mm)	Width (mm)	Height (mm)	Tim	Material	Finish	Packaged Cooled	Thermal Resistance (Natural Convection)	R @ 200 LFM	R @ 400 LFM	R @ 600 LFM	R @ 800 LFM
26.3	20.3	6.1	No TIM	Aluminum	Blk Anodized	TO-220	23.0	6.5	4.5	3.3	2.5

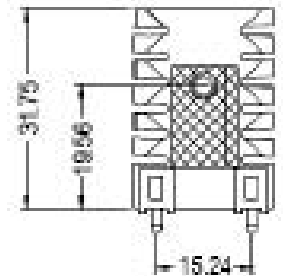
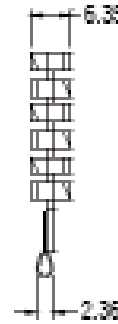
ATS-PCB1029



Product Details

Length (mm)	Width (mm)	Height (mm)	Tim	Material	Finish	Packaged Cooled	Thermal Resistance (Natural Convection)	R @ 200 LFM	R @ 400 LFM	R @ 600 LFM	R @ 800 LFM
25.4	39.4	9.5	No TIM	Aluminum	Blk Anodized	TO-220	11.0	6.8	5.0	3.7	3.0

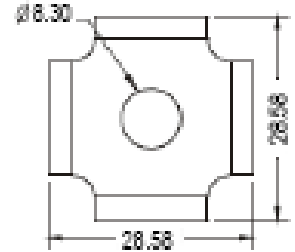
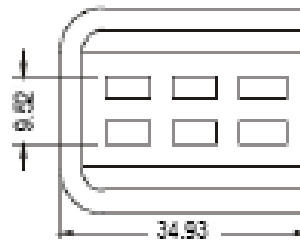
ATS-PCB1030



Product Details

Length (mm)	Width (mm)	Height (mm)	Tim	Material	Finish	Packaged Cooled	Thermal Resistance (Natural Convection)	R @ 200 LFM	R @ 400 LFM	R @ 600 LFM	R @ 800 LFM
31.8	22.2	6.4	No TIM	Aluminum	Blk Anodized	TO-220	22.0	9.9	5.2	4.2	3.8

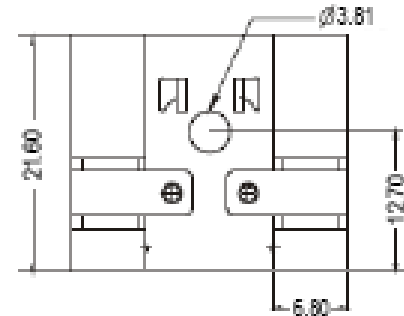
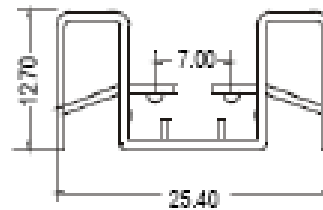
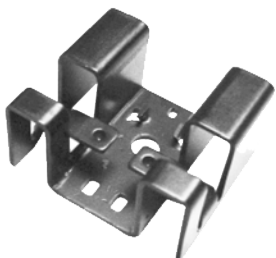
ATS-PCB1031



Product Details

Length (mm)	Width (mm)	Height (mm)	Tim	Material	Finish	Packaged Cooled	Thermal Resistance (Natural Convection)	R @ 200 LFM	R @ 400 LFM	R @ 600 LFM	R @ 800 LFM
28.6	28.6	34.9	No TIM	Aluminum	Blk Anodized	BRIDGE RECTIFIER	9.0	4.8	3.4	2.3	1.9

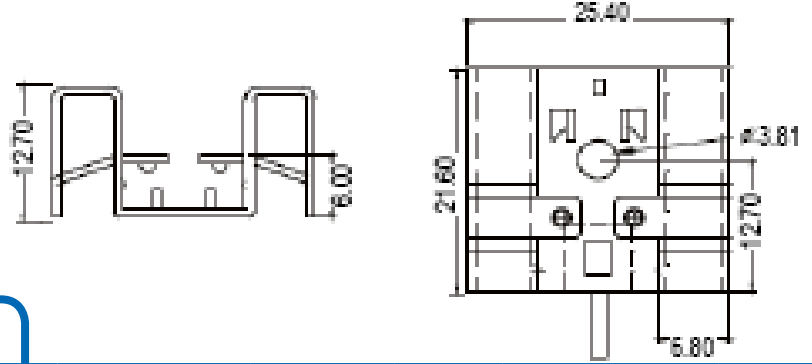
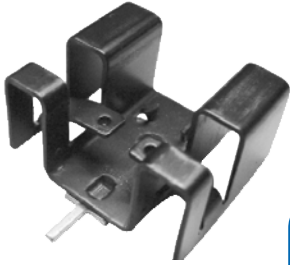
ATS-PCB1032



Product Details

Length (mm)	Width (mm)	Height (mm)	Tim	Material	Finish	Packaged Cooled	Thermal Resistance (Natural Convection)	R @ 200 LFM	R @ 400 LFM	R @ 600 LFM	R @ 800 LFM
21.6	25.4	12.7	No TIM	Aluminum	Blk Anodized	TO-220	20.0	9.0	6.8	5.3	4.0

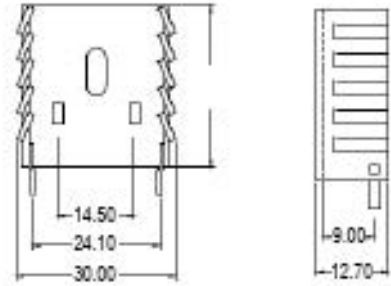
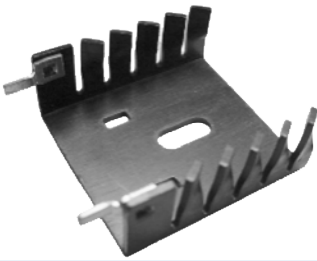
ATS-PCB1033



Product Details

Length (mm)	Width (mm)	Height (mm)	Tim	Material	Finish	Packaged Cooled	Thermal Resistance (Natural Convection)	R @ 200 LFM	R @ 400 LFM	R @ 600 LFM	R @ 800 LFM
21.6	25.4	12.7	No TIM	Aluminum	Blk Anodized	TO-220	20.0	9.0	6.8	5.3	4.0

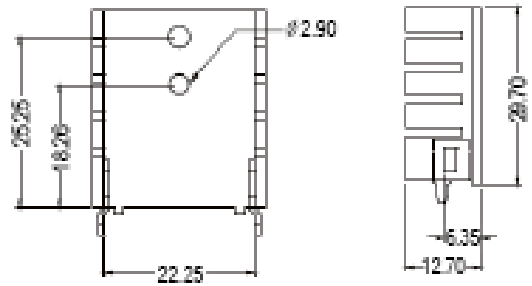
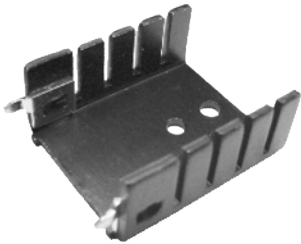
ATS-PCB1034



Product Details

Length (mm)	Width (mm)	Height (mm)	Tim	Material	Finish	Packaged Cooled	Thermal Resistance (Natural Convection)	R @ 200 LFM	R @ 400 LFM	R @ 600 LFM	R @ 800 LFM
30.2	30.0	12.7	No TIM	Aluminum	Blk Anodized	TO-220	13.0	8.9	6.5	5.2	4.2

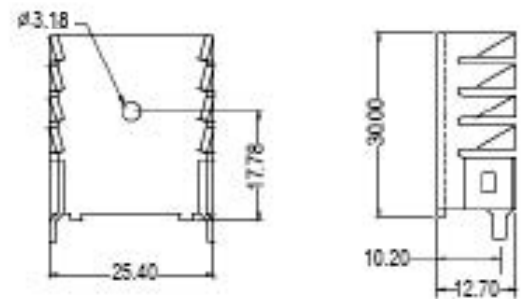
ATS-PCB1035



Product Details

Length (mm)	Width (mm)	Height (mm)	Tim	Material	Finish	Packaged Cooled	Thermal Resistance (Natural Convection)	R @ 200 LFM	R @ 400 LFM	R @ 600 LFM	R @ 800 LFM
30.0	25.4	12.7	No TIM	Aluminum	Blk Anodized	TO-220	12.5	7.3	5.6	4.7	4.2

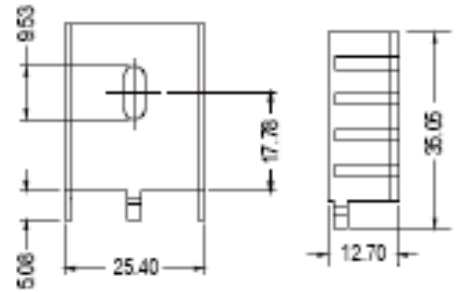
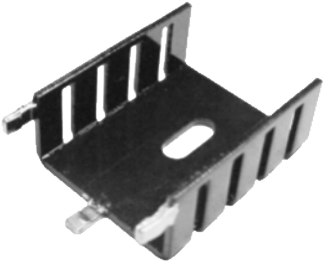
ATS-PCB1036



Product Details

Length (mm)	Width (mm)	Height (mm)	Tim	Material	Finish	Packaged Cooled	Thermal Resistance (Natural Convection)	R @ 200 LFM	R @ 400 LFM	R @ 600 LFM	R @ 800 LFM
30.0	25.4	12.7	No TIM	Aluminum	Blk Anodized	TO-220	13.4	7.0	5.0	4.0	3.7

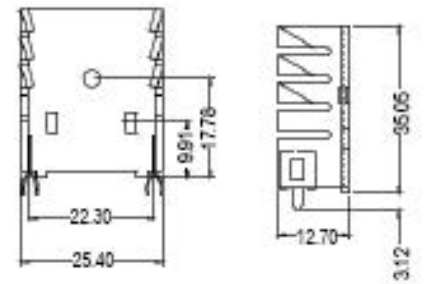
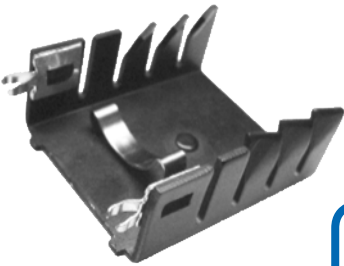
ATS-PCB1037



Product Details

Length (mm)	Width (mm)	Height (mm)	Tim	Material	Finish	Packaged Cooled	Thermal Resistance (Natural Convection)	R @ 200 LFM	R @ 400 LFM	R @ 600 LFM	R @ 800 LFM
35.1	25.4	12.7	No TIM	Aluminum	Blk Anodized	TO-220	18.0	13.0	9.1	7.5	6.6

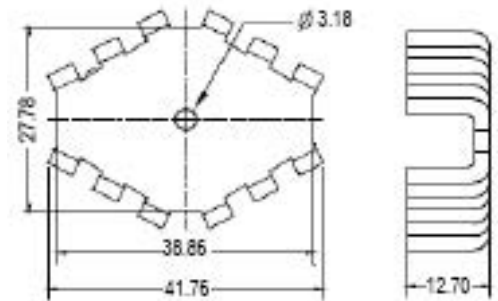
ATS-PCB1038



Product Details

Length (mm)	Width (mm)	Height (mm)	Tim	Material	Finish	Packaged Cooled	Thermal Resistance (Natural Convection)	R @ 200 LFM	R @ 400 LFM	R @ 600 LFM	R @ 800 LFM
30.0	25.4	12.7	No TIM	Aluminum	Blk Anodized	TO-220	13.4	7.0	5.1	4.0	2.2

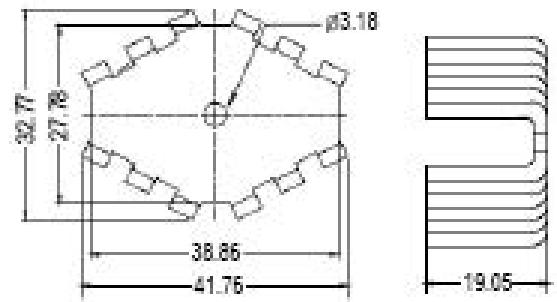
ATS-PCB1039



Product Details

Length (mm)	Width (mm)	Height (mm)	Tim	Material	Finish	Packaged Cooled	Thermal Resistance (Natural Convection)	R @ 200 LFM	R @ 400 LFM	R @ 600 LFM	R @ 800 LFM
41.8	32.8	12.7	No TIM	Aluminum	Blk Anodized	TO-220	15.6	5.6	3.6	3.0	2.9

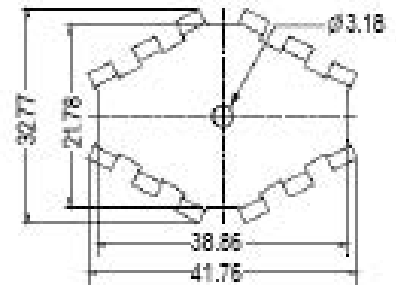
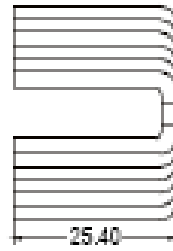
ATS-PCB1040



Product Details

Length (mm)	Width (mm)	Height (mm)	Tim	Material	Finish	Packaged Cooled	Thermal Resistance (Natural Convection)	R @ 200 LFM	R @ 400 LFM	R @ 600 LFM	R @ 800 LFM
41.8	32.8	19.1	No TIM	Aluminum	Blk Anodized	TO-220	13.4	3.9	2.8	2.6	2.3

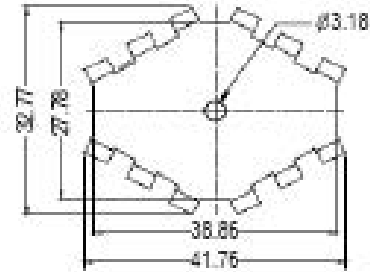
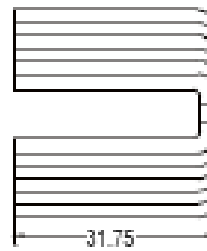
ATS-PCB1041



Product Details

Length (mm)	Width (mm)	Height (mm)	Tim	Material	Finish	Packaged Cooled	Thermal Resistance (Natural Convection)	R @ 200 LFM	R @ 400 LFM	R @ 600 LFM	R @ 800 LFM
41.8	32.8	25.4	No TIM	Aluminum	Blk Anodized	TO-220	11.0	3.8	2.5	2.1	2.0

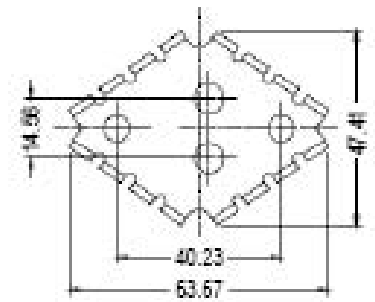
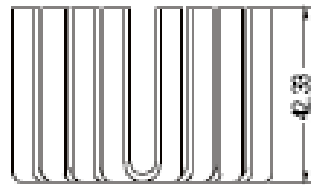
ATS-PCB1042



Product Details

Length (mm)	Width (mm)	Height (mm)	Tim	Material	Finish	Packaged Cooled	Thermal Resistance (Natural Convection)	R @ 200 LFM	R @ 400 LFM	R @ 600 LFM	R @ 800 LFM
41.8	32.8	31.8	No TIM	Aluminum	Blk Anodized	TO-220	9.8	3.5	2.3	2.1	2.0

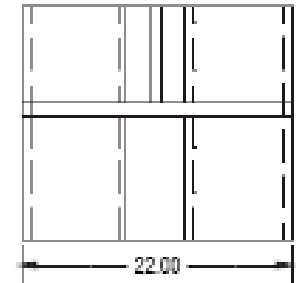
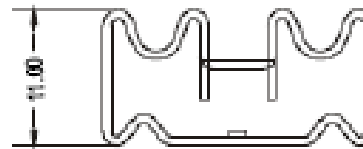
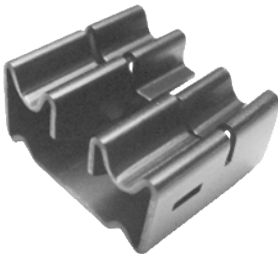
ATS-PCB1043



Product Details

Length (mm)	Width (mm)	Height (mm)	Tim	Material	Finish	Packaged Cooled	Thermal Resistance (Natural Convection)	R @ 200 LFM	R @ 400 LFM	R @ 600 LFM	R @ 800 LFM
63.7	47.4	42.3	No TIM	Aluminum	Blk Anodized	TO-3	7.5	2.6	2.1	1.7	1.3

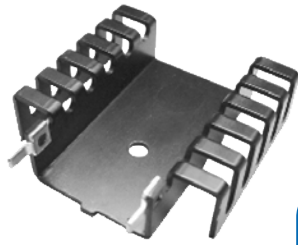
ATS-PCB1044



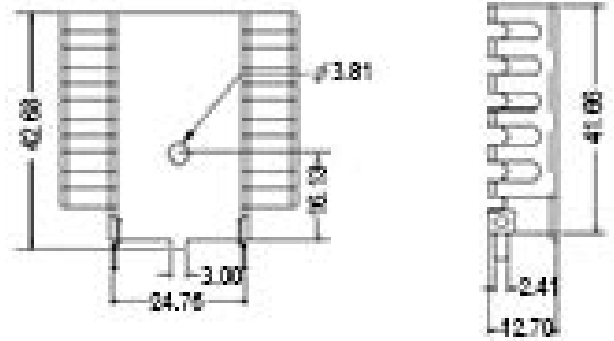
Product Details

Length (mm)	Width (mm)	Height (mm)	Tim	Material	Finish	Packaged Cooled	Thermal Resistance (Natural Convection)	R @ 200 LFM	R @ 400 LFM	R @ 600 LFM	R @ 800 LFM
19.0	22.0	11.0	No TIM	Aluminum	Blk Anodized	TO-220	23.7	11.2	8.3	6.0	5.0

ATS-PCB1045

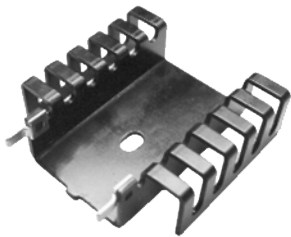


Product Details

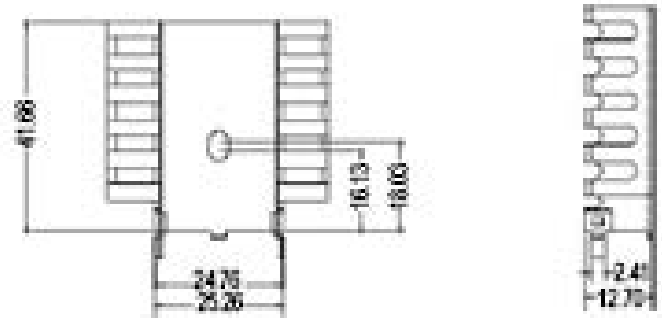


Length (mm)	Width (mm)	Height (mm)	Tim	Material	Finish	Packaged Cooled	Thermal Resistance (Natural Convection)	R @ 200 LFM	R @ 400 LFM	R @ 600 LFM	R @ 800 LFM
41.7	43.2	12.7	No TIM	Aluminum	Blk Anodized	TO-220,TO-218,TO-247	8.6	6.3	4.5	3.5	2.8

ATS-PCB1046

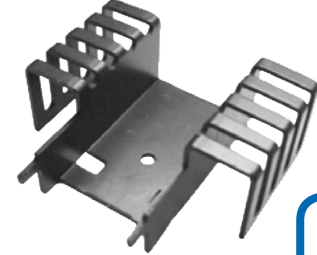


Product Details

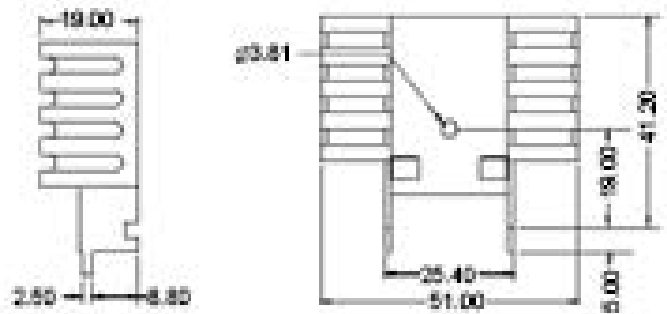


Length (mm)	Width (mm)	Height (mm)	Tim	Material	Finish	Packaged Cooled	Thermal Resistance (Natural Convection)	R @ 200 LFM	R @ 400 LFM	R @ 600 LFM	R @ 800 LFM
41.2	43.2	12.7	No TIM	Aluminum	Blk Anodized	TO-220, TO-218	8.6	6.3	4.5	3.5	2.8

ATS-PCB1047



Product Details

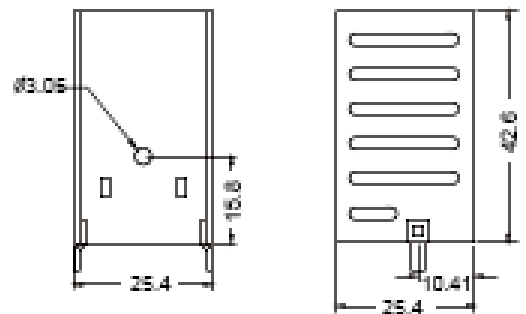


Length (mm)	Width (mm)	Height (mm)	Tim	Material	Finish	Packaged Cooled	Thermal Resistance (Natural Convection)	R @ 200 LFM	R @ 400 LFM	R @ 600 LFM	R @ 800 LFM
46.2	51.0	19.0	No TIM	Aluminum	Blk Anodized	TO-218, TO-247	8.0	2.4	1.8	1.2	1.0

ATS-PCB1048

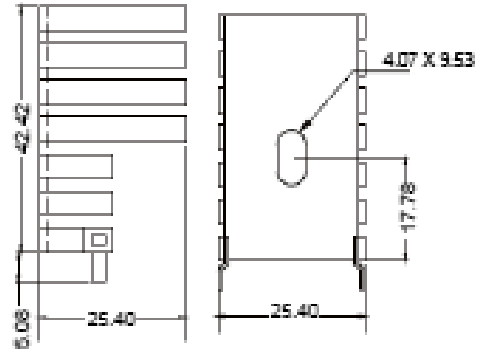


Product Details



Length (mm)	Width (mm)	Height (mm)	Tim	Material	Finish	Packaged Cooled	Thermal Resistance (Natural Convection)	R @ 200 LFM	R @ 400 LFM	R @ 600 LFM	R @ 800 LFM
42.6	25.4	25.4	No TIM	Aluminum	Blk Anodized	TO-220	13.0	8.0	6.5	5.4	4.9

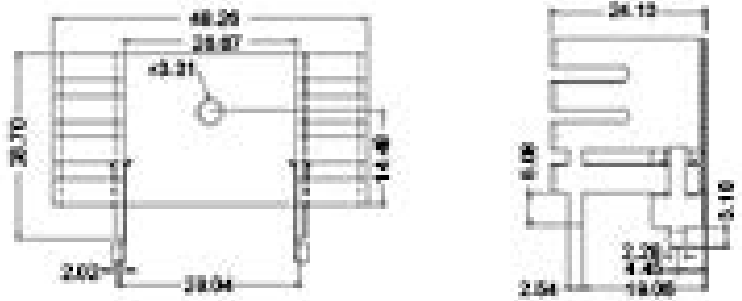
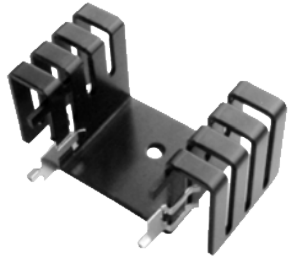
ATS-PCB1049



Product Details

Length (mm)	Width (mm)	Height (mm)	Tim	Material	Finish	Packaged Cooled	Thermal Resistance (Natural Convection)	R @ 200 LFM	R @ 400 LFM	R @ 600 LFM	R @ 800 LFM
42.4	25.4	25.4	No TIM	Aluminum	Blk Anodized	TO-220	10.0	4.4	3.6	3.0	2.8

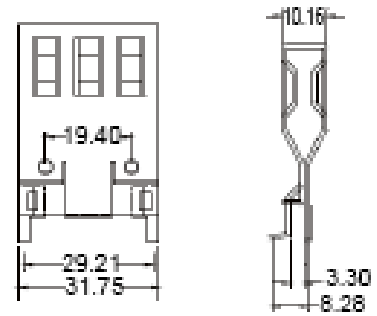
ATS-PCB1050



Product Details

Length (mm)	Width (mm)	Height (mm)	Tim	Material	Finish	Packaged Cooled	Thermal Resistance (Natural Convection)	R @ 200 LFM	R @ 400 LFM	R @ 600 LFM	R @ 800 LFM
28.7	48.3	24.1	No TIM	Aluminum	Blk Anodized	TO-220	6.8	4.9	3.5	2.5	2.2

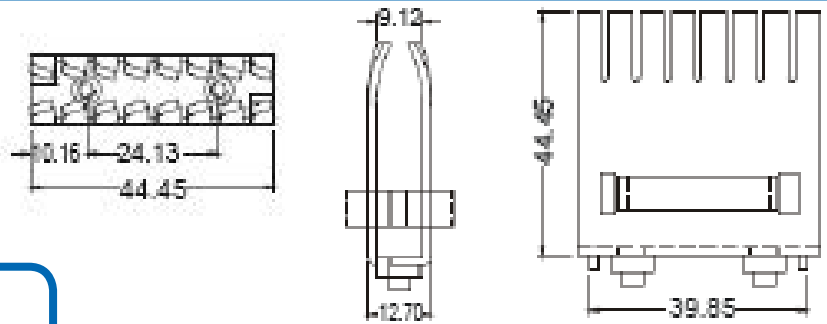
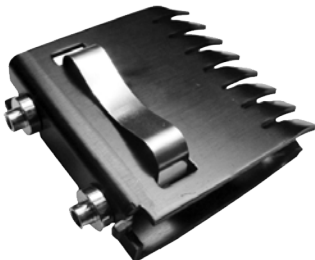
ATS-PCB1051



Product Details

Length (mm)	Width (mm)	Height (mm)	Tim	Material	Finish	Packaged Cooled	Thermal Resistance (Natural Convection)	R @ 200 LFM	R @ 400 LFM	R @ 600 LFM	R @ 800 LFM
43.2	31.8	10.2	No TIM	Aluminum	Blk Anodized	12-SIP	10.0	4.5	3.1	2.3	1.6

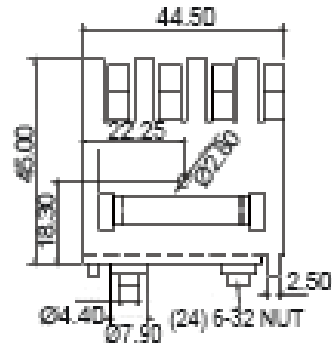
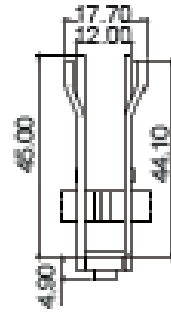
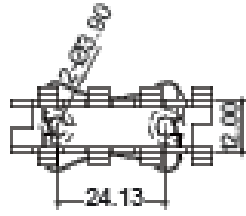
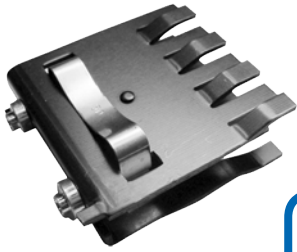
ATS-PCB1052



Product Details

Length (mm)	Width (mm)	Height (mm)	Tim	Material	Finish	Packaged Cooled	Thermal Resistance (Natural Convection)	R @ 200 LFM	R @ 400 LFM	R @ 600 LFM	R @ 800 LFM
44.5	12.7	44.5	No TIM	Aluminum	Blk Anodized	TO-220, TO-218, TO-247	6.3	2.3	1.5	1.1	0.8

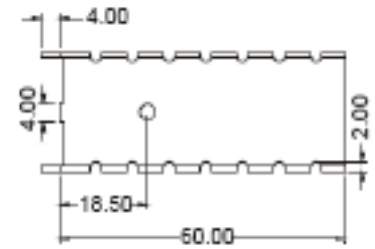
ATS-PCB1053



Product Details

Length (mm)	Width (mm)	Height (mm)	Tim	Material	Finish	Packaged Cooled	Thermal Resistance (Natural Convection)	R @ 200 LFM	R @ 400 LFM	R @ 600 LFM	R @ 800 LFM
44.5	17.7	45.0	No TIM	Aluminum	Blk Anodized	TO-220	6.3	2.7	2.0	1.5	1.1

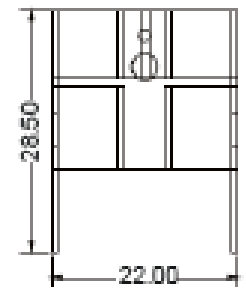
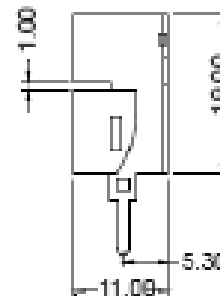
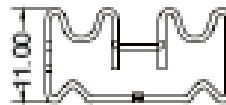
ATS-PCB1054



Product Details

Length (mm)	Width (mm)	Height (mm)	Tim	Material	Finish	Packaged Cooled	Thermal Resistance (Natural Convection)	R @ 200 LFM	R @ 400 LFM	R @ 600 LFM	R @ 800 LFM
60.0	25.0	8.5	No TIM	Aluminum	Blk Anodized	TO-220	12.0	6.7	5.7	5.2	4.8

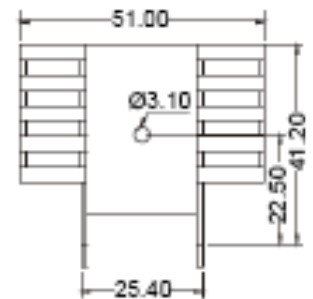
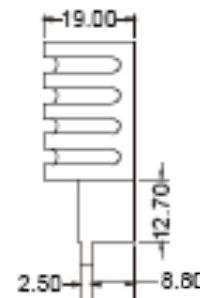
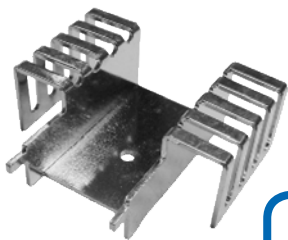
ATS-PCB1055



Product Details

Length (mm)	Width (mm)	Height (mm)	Tim	Material	Finish	Packaged Cooled	Thermal Resistance (Natural Convection)	R @ 200 LFM	R @ 400 LFM	R @ 600 LFM	R @ 800 LFM
19.0	22.0	11.0	No TIM	Aluminum	Blk Anodized	TO-220	23.7	11.2	8.3	6.0	5.0

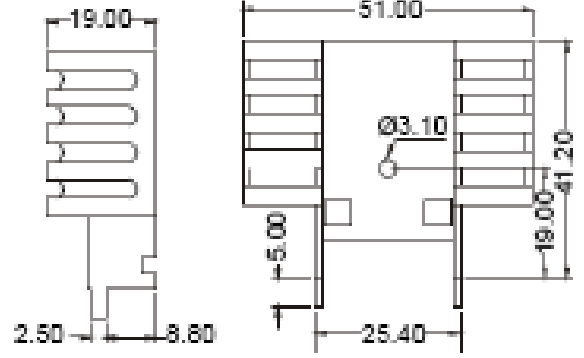
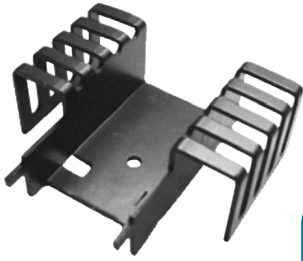
ATS-PCB1056



Product Details

Length (mm)	Width (mm)	Height (mm)	Tim	Material	Finish	Packaged Cooled	Thermal Resistance (Natural Convection)	R @ 200 LFM	R @ 400 LFM	R @ 600 LFM	R @ 800 LFM
41.2	51.0	19.0	No TIM	Aluminum	Blk Anodized	TO-218, TO-247	8.0	2.4	1.8	1.2	1.0

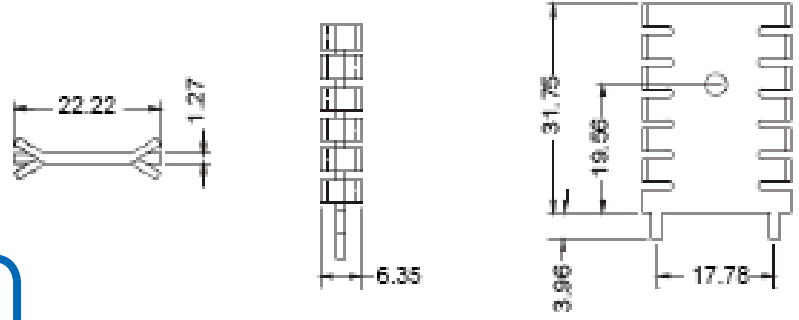
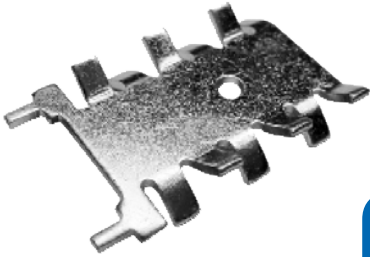
ATS-PCB1057



Product Details

Length (mm)	Width (mm)	Height (mm)	Tim	Material	Finish	Packaged Cooled	Thermal Resistance (Natural Convection)	R @ 200 LFM	R @ 400 LFM	R @ 600 LFM	R @ 800 LFM
41.2	51.0	19.0	No TIM	Aluminum	Blk Anodized	TO-220	8.0	2.4	1.8	1.2	1.0

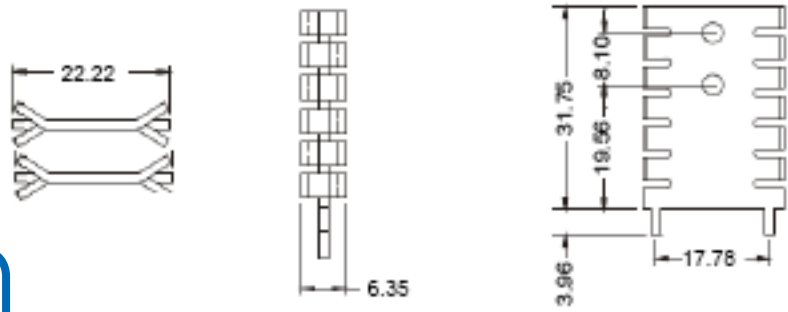
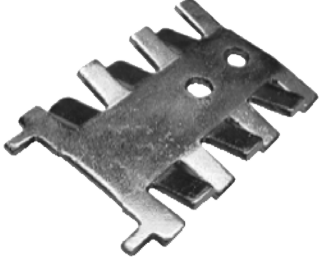
ATS-PCB1058



Product Details

Length (mm)	Width (mm)	Height (mm)	Tim	Material	Finish	Packaged Cooled	Thermal Resistance (Natural Convection)	R @ 200 LFM	R @ 400 LFM	R @ 600 LFM	R @ 800 LFM
31.8	22.2	6.4	No TIM	Copper	Tin Plated	TO-220	24.0	8.8	6.1	4.1	4.0

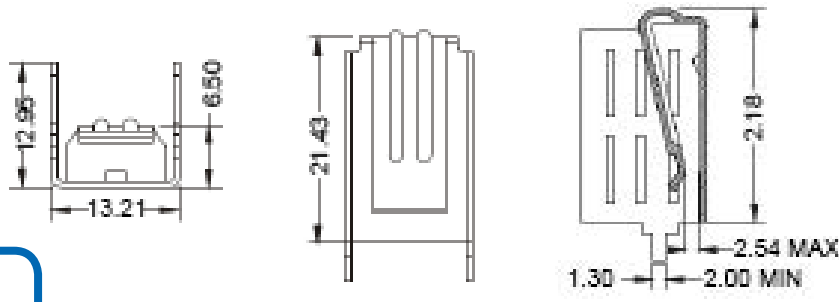
ATS-PCB1059



Product Details

Length (mm)	Width (mm)	Height (mm)	Tim	Material	Finish	Packaged Cooled	Thermal Resistance (Natural Convection)	R @ 200 LFM	R @ 400 LFM	R @ 600 LFM	R @ 800 LFM
31.8	22.2	6.4	No TIM	Copper	Tin Plated	TO-220	24.0	8.8	6.1	4.1	4.0

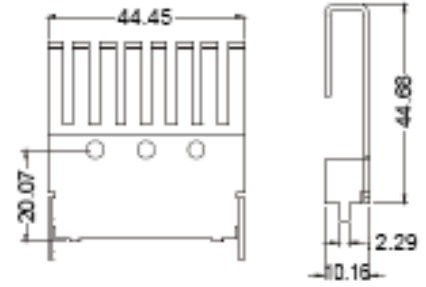
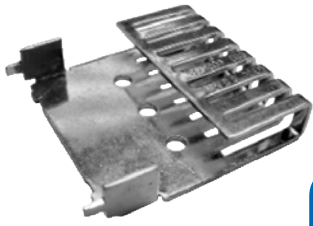
ATS-PCB1060



Product Details

Length (mm)	Width (mm)	Height (mm)	Tim	Material	Finish	Packaged Cooled	Thermal Resistance (Natural Convection)	R @ 200 LFM	R @ 400 LFM	R @ 600 LFM	R @ 800 LFM
21.8	13.2	13.0	No TIM	Copper	Tin Plated	TO-220	19.7	8.0	6.8	5.7	5.0

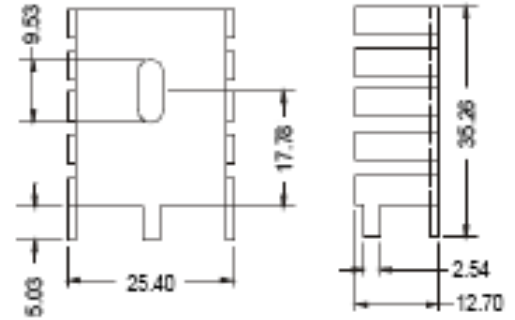
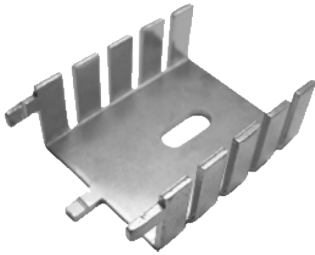
ATS-PCB1061



Product Details

Length (mm)	Width (mm)	Height (mm)	Tim	Material	Finish	Packaged Cooled	Thermal Resistance (Natural Convection)	R @ 200 LFM	R @ 400 LFM	R @ 600 LFM	R @ 800 LFM
44.7	44.5	10.2	No TIM	Copper	Tin Plated	TO-126	15.0	6.5	5.1	4.3	3.6

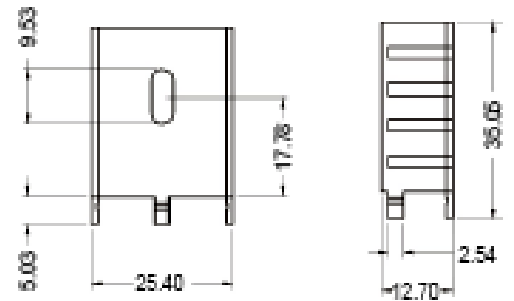
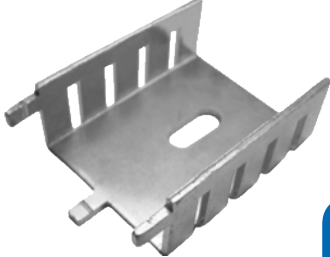
ATS-PCB1062



Product Details

Length (mm)	Width (mm)	Height (mm)	Tim	Material	Finish	Packaged Cooled	Thermal Resistance (Natural Convection)	R @ 200 LFM	R @ 400 LFM	R @ 600 LFM	R @ 800 LFM
30.0	25.4	12.7	No TIM	Copper	Tin Plated	TO-220	13.0	7.0	5.0	4.0	3.1

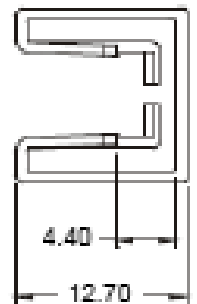
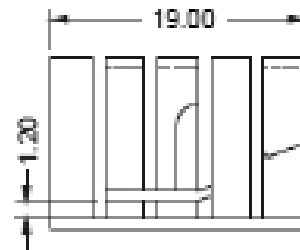
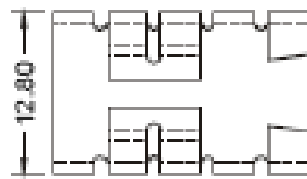
ATS-PCB1063



Product Details

Length (mm)	Width (mm)	Height (mm)	Tim	Material	Finish	Packaged Cooled	Thermal Resistance (Natural Convection)	R @ 200 LFM	R @ 400 LFM	R @ 600 LFM	R @ 800 LFM
30.0	25.4	12.7	No TIM	Copper	Tin Plated	TO-220	18.0	13.0	9.1	7.5	6.8

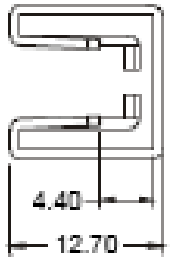
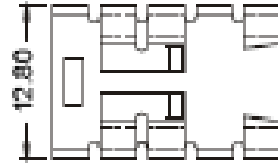
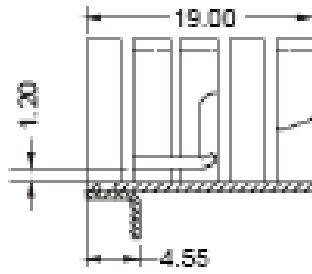
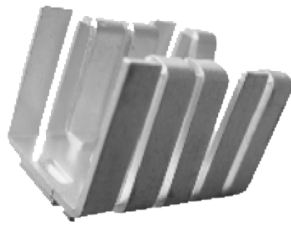
ATS-PCB1064



Product Details

Length (mm)	Width (mm)	Height (mm)	Tim	Material	Finish	Packaged Cooled	Thermal Resistance (Natural Convection)	R @ 200 LFM	R @ 400 LFM	R @ 600 LFM	R @ 800 LFM
19.0	12.8	12.7	No TIM	Aluminum	Blk Anodized	TO-220	27.3	10.2	7.0	5.6	4.8

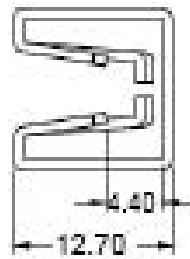
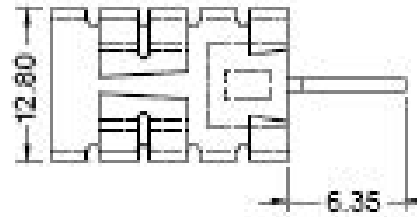
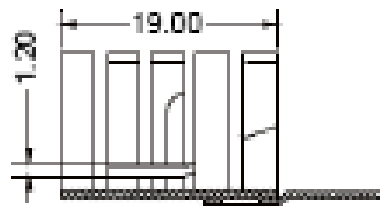
ATS-PCB1065



Product Details

Length (mm)	Width (mm)	Height (mm)	Tim	Material	Finish	Packaged Cooled	Thermal Resistance (Natural Convection)	R @ 200 LFM	R @ 400 LFM	R @ 600 LFM	R @ 800 LFM
19.0	12.8	12.7	No TIM	Aluminum	Blk Anodized	TO-220	27.3	10.2	7.0	5.6	4.8

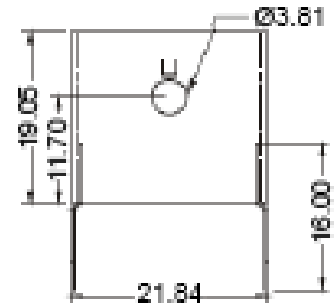
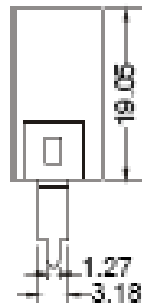
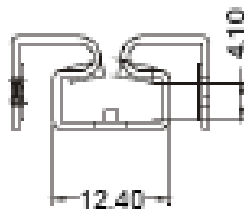
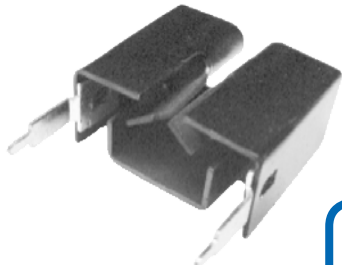
ATS-PCB1066



Product Details

Length (mm)	Width (mm)	Height (mm)	Tim	Material	Finish	Packaged Cooled	Thermal Resistance (Natural Convection)	R @ 200 LFM	R @ 400 LFM	R @ 600 LFM	R @ 800 LFM
19.0	12.8	12.7	No TIM	Aluminum	Blk Anodized	TO-220, TO-262	27.3	10.2	7.0	5.6	4.8

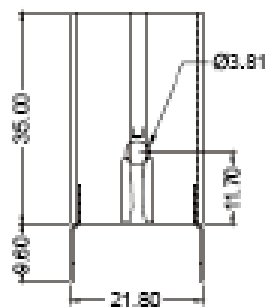
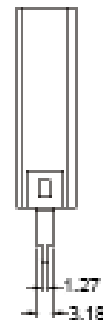
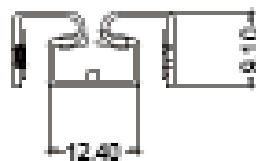
ATS-PCB1067



Product Details

Length (mm)	Width (mm)	Height (mm)	Tim	Material	Finish	Packaged Cooled	Thermal Resistance (Natural Convection)	R @ 200 LFM	R @ 400 LFM	R @ 600 LFM	R @ 800 LFM
19.1	21.8	9.9	No TIM	Aluminum	Blk Anodized	TO-220	21.2	10.5	8.0	5.9	4.8

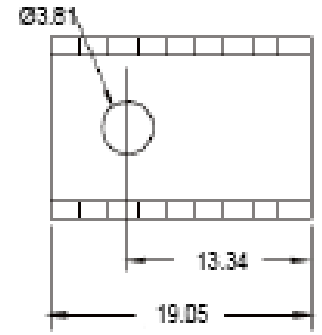
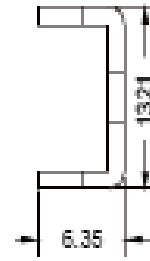
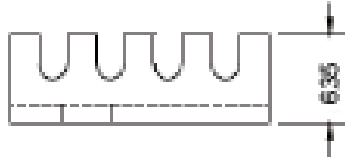
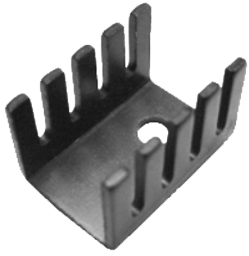
ATS-PCB1068



Product Details

Length (mm)	Width (mm)	Height (mm)	Tim	Material	Finish	Packaged Cooled	Thermal Resistance (Natural Convection)	R @ 200 LFM	R @ 400 LFM	R @ 600 LFM	R @ 800 LFM
34.9	21.8	9.1	No TIM	Aluminum	Blk Anodized	TO-220	16.0	11.0	8.1	6.0	4.8

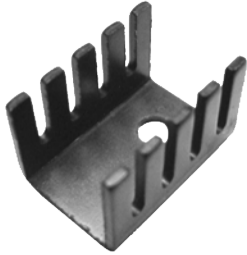
ATS-PCB1069



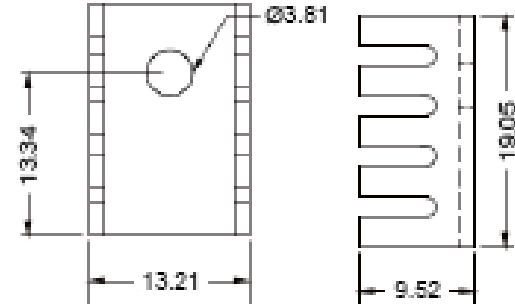
Product Details

Length (mm)	Width (mm)	Height (mm)	Tim	Material	Finish	Packaged Cooled	Thermal Resistance (Natural Convection)	R @ 200 LFM	R @ 400 LFM	R @ 600 LFM	R @ 800 LFM
19.1	13.2	6.4	No TIM	Aluminum	Blk Anodized	TO-220	32.0	15.8	11.2	9.2	7.8

ATS-PCB1070



Product Details

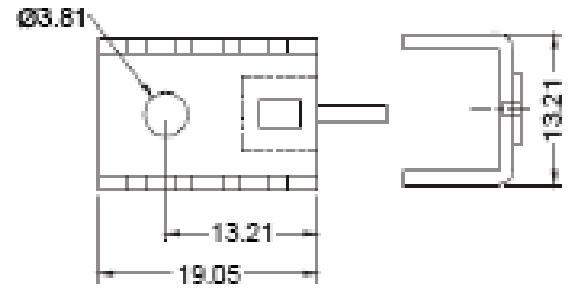
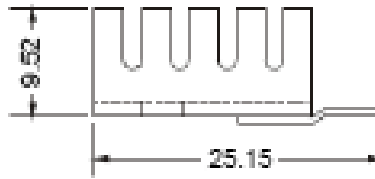


Length (mm)	Width (mm)	Height (mm)	Tim	Material	Finish	Packaged Cooled	Thermal Resistance (Natural Convection)	R @ 200 LFM	R @ 400 LFM	R @ 600 LFM	R @ 800 LFM
19.1	13.2	9.5	No TIM	Aluminum	Blk Anodized	TO-220	25.9	15.8	11.2	9.2	7.8

ATS-PCB1071

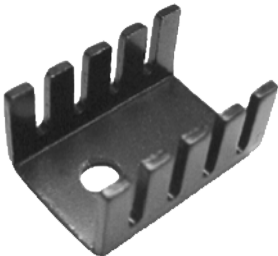


Product Details

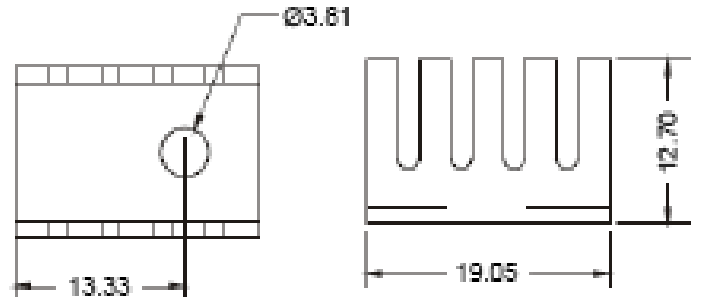
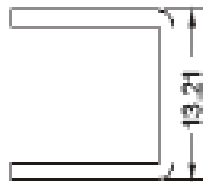


Length (mm)	Width (mm)	Height (mm)	Tim	Material	Finish	Packaged Cooled	Thermal Resistance (Natural Convection)	R @ 200 LFM	R @ 400 LFM	R @ 600 LFM	R @ 800 LFM
19.1	13.2	9.5	No TIM	Aluminum	Blk Anodized	TO-220	25.9	15.6	11.0	9.0	7.6

ATS-PCB1072

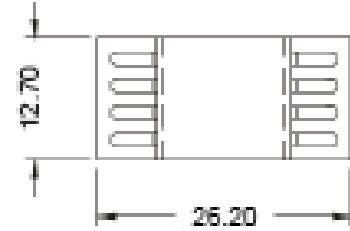
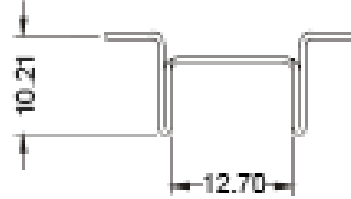
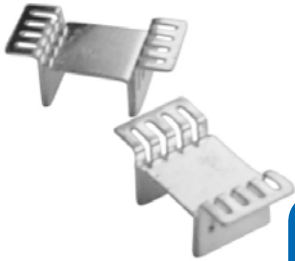


Product Details



Length (mm)	Width (mm)	Height (mm)	Tim	Material	Finish	Packaged Cooled	Thermal Resistance (Natural Convection)	R @ 200 LFM	R @ 400 LFM	R @ 600 LFM	R @ 800 LFM
19.1	13.2	12.7	No TIM	Aluminum	Blk Anodized	TO-220	24.4	9.5	7.0	6.3	6.0

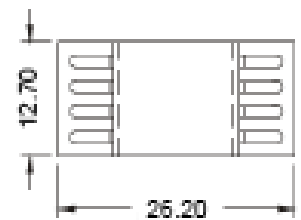
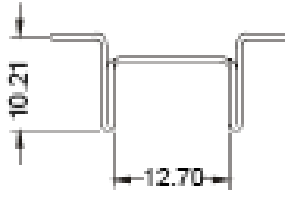
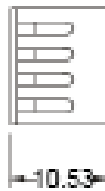
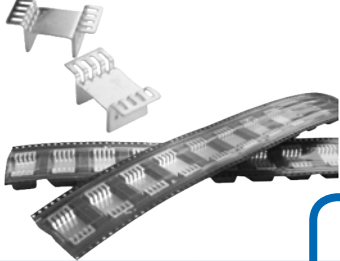
ATS-PCB1073



Product Details

Length (mm)	Width (mm)	Height (mm)	Tim	Material	Finish	Packaged Cooled	Thermal Resistance (Natural Convection)	R @ 200 LFM	R @ 400 LFM	R @ 600 LFM	R @ 800 LFM
12.7	26.2	10.2	No TIM	Copper	Tin Plated	TO-263	18.0	9.5	6.8	5.2	5.0

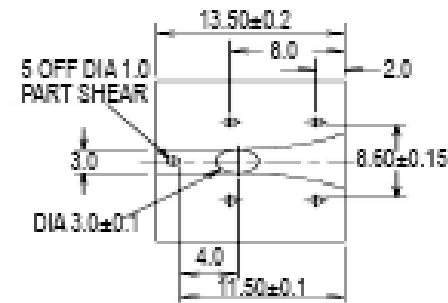
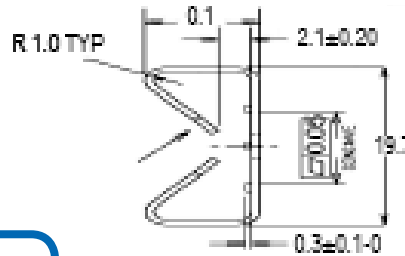
ATS-PCB1074



Product Details

Length (mm)	Width (mm)	Height (mm)	Tim	Material	Finish	Packaged Cooled	Thermal Resistance (Natural Convection)	R @ 200 LFM	R @ 400 LFM	R @ 600 LFM	R @ 800 LFM
12.7	26.2	10.2	No TIM	Copper	Tin Plated	TO-263	18.0	9.5	6.8	5.2	5.0

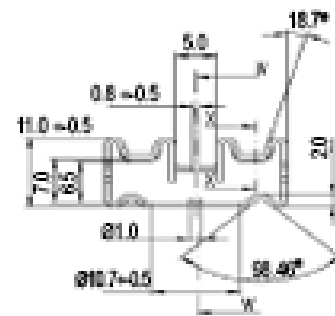
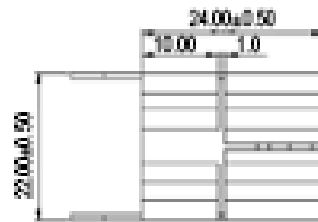
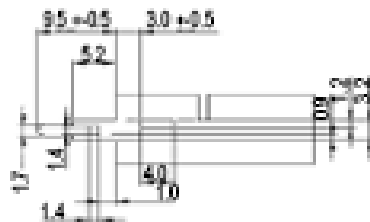
ATS-PCBT1075



Product Details

Length (mm)	Width (mm)	Height (mm)	Tim	Material	Finish	Packaged Cooled	Thermal Resistance (Natural Convection)	R @ 200 LFM	R @ 400 LFM	R @ 600 LFM	R @ 800 LFM
13.2	19.7	8.1	No TIM	Aluminum	Blk Anodized	TO-126	35.8	25.0	17.0	14.0	12.0

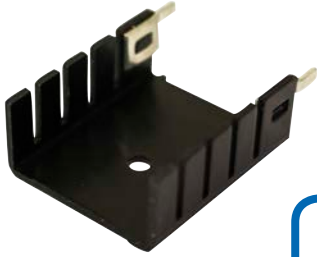
ATS-PCBT1076



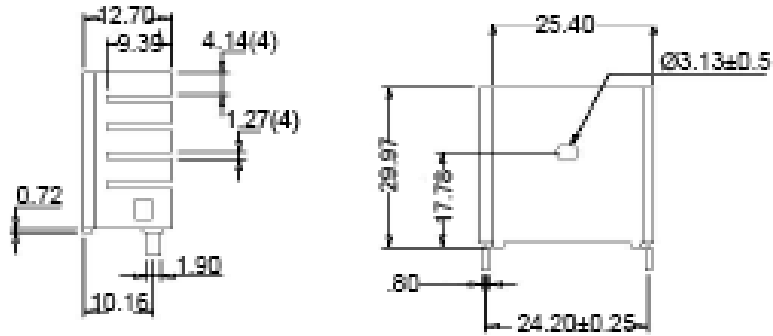
Product Details

Length (mm)	Width (mm)	Height (mm)	Tim	Material	Finish	Packaged Cooled	Thermal Resistance (Natural Convection)	R @ 200 LFM	R @ 400 LFM	R @ 600 LFM	R @ 800 LFM
24.0	22.0	11.0	No TIM	Aluminum	Blk Anodized	TO-220	17.3	15.0	10.5	9.8	9.4

ATS-PCBT1077



Product Details

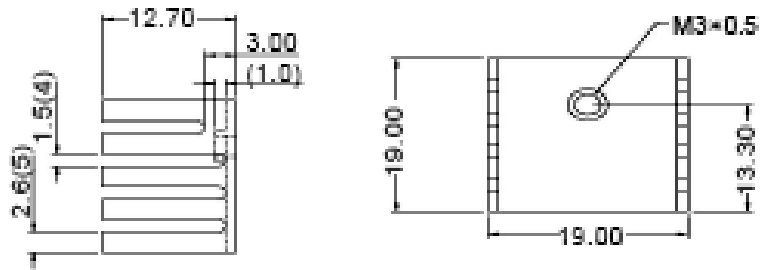


Length (mm)	Width (mm)	Height (mm)	Tim	Material	Finish	Packaged Cooled	Thermal Resistance (Natural Convection)	R @ 200 LFM	R @ 400 LFM	R @ 600 LFM	R @ 800 LFM
30.0	25.4	12.7	No TIM	Aluminum	Blk Anodized	TO-220	12.5	7.3	5.3	4.8	4.1

ATS-PCBT1078



Product Details

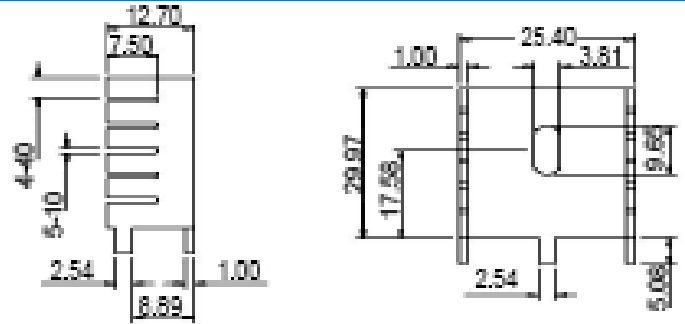


Length (mm)	Width (mm)	Height (mm)	Tim	Material	Finish	Packaged Cooled	Thermal Resistance (Natural Convection)	R @ 200 LFM	R @ 400 LFM	R @ 600 LFM	R @ 800 LFM
19.0	19.0	12.7	No TIM	Aluminum	Blk Anodized	TO-220	22.0	8.9	5.9	4.2	4.0

ATS-PCBT1079



Product Details

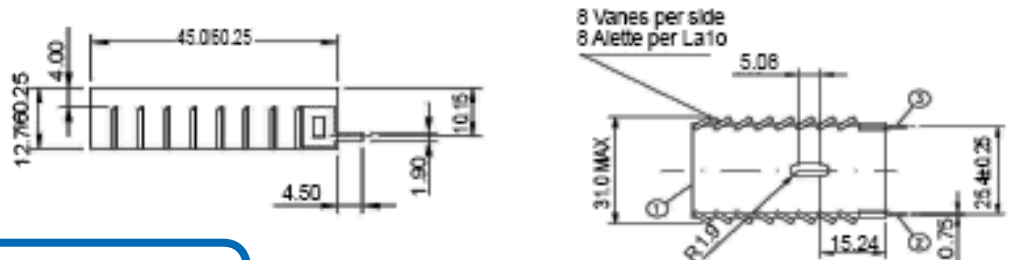


Length (mm)	Width (mm)	Height (mm)	Tim	Material	Finish	Packaged Cooled	Thermal Resistance (Natural Convection)	R @ 200 LFM	R @ 400 LFM	R @ 600 LFM	R @ 800 LFM
30.0	25.4	12.7	No TIM	Aluminum	Blk Anodized	TO-220	13.0	7.1	4.8	3.9	3.4

ATS-PCBT1080

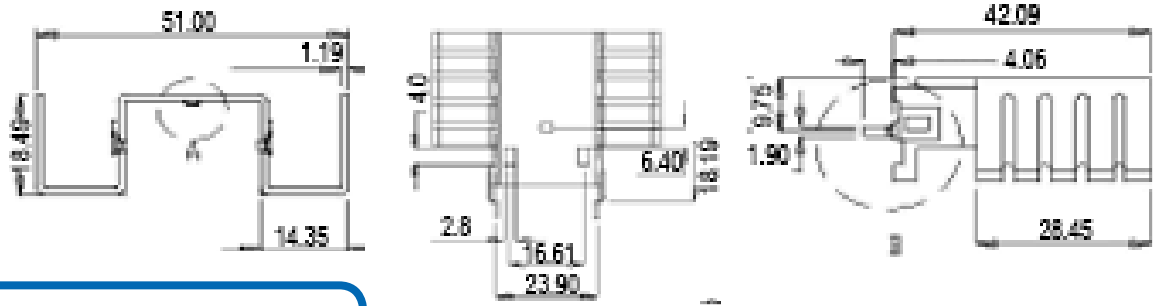
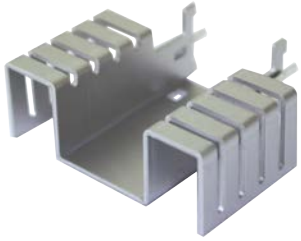


Product Details



Length (mm)	Width (mm)	Height (mm)	Tim	Material	Finish	Packaged Cooled	Thermal Resistance (Natural Convection)	R @ 200 LFM	R @ 400 LFM	R @ 600 LFM	R @ 800 LFM
45.0	31.0	12.7	No TIM	Aluminum	Blk Anodized	TO-218, TO-220	13.0	9.0	7.0	7.0	7.0

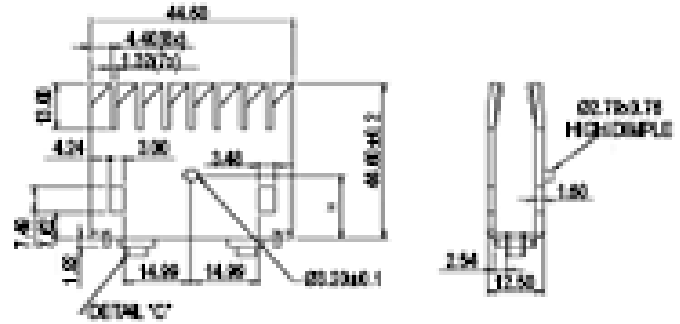
ATS-PCBT1081



Product Details

Length (mm)	Width (mm)	Height (mm)	Tim	Material	Finish	Packaged Cooled	Thermal Resistance (Natural Convection)	R @ 200 LFM	R @ 400 LFM	R @ 600 LFM	R @ 800 LFM
42.1	51.0	18.5	No TIM	Aluminum	Blk Anodized	TO-220	6.7	1.8	1.2	0.8	0.6

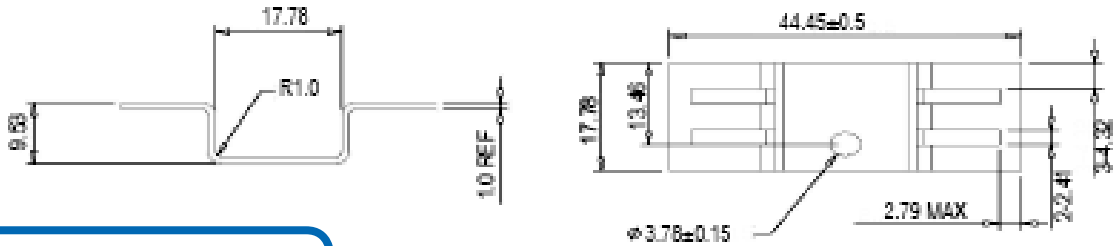
ATS-PCBT1082



Product Details

Length (mm)	Width (mm)	Height (mm)	Tim	Material	Finish	Packaged Cooled	Thermal Resistance (Natural Convection)	R @ 200 LFM	R @ 400 LFM	R @ 600 LFM	R @ 800 LFM
44.6	12.5	44.6	No TIM	Aluminum	Blk Anodized	TO-218	6.3	2.1	1.3	0.9	0.7

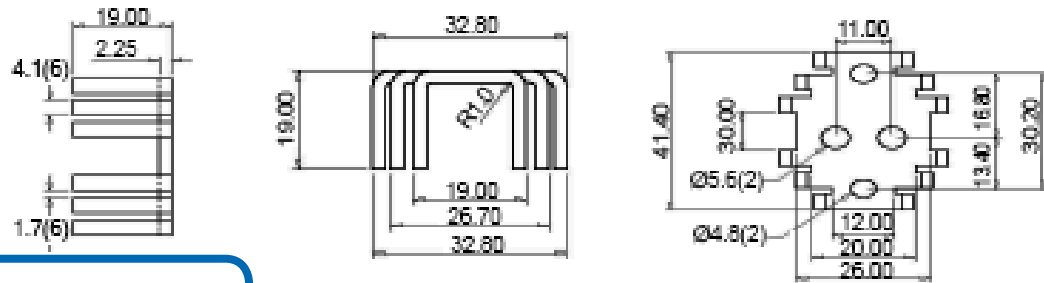
ATS-PCBT1083



Product Details

Length (mm)	Width (mm)	Height (mm)	Tim	Material	Finish	Packaged Cooled	Thermal Resistance (Natural Convection)	R @ 200 LFM	R @ 400 LFM	R @ 600 LFM	R @ 800 LFM
17.8	44.5	9.5	No TIM	Aluminum	Blk Anodized	TO-220	17.0	6.6	4.9	3.5	3.0

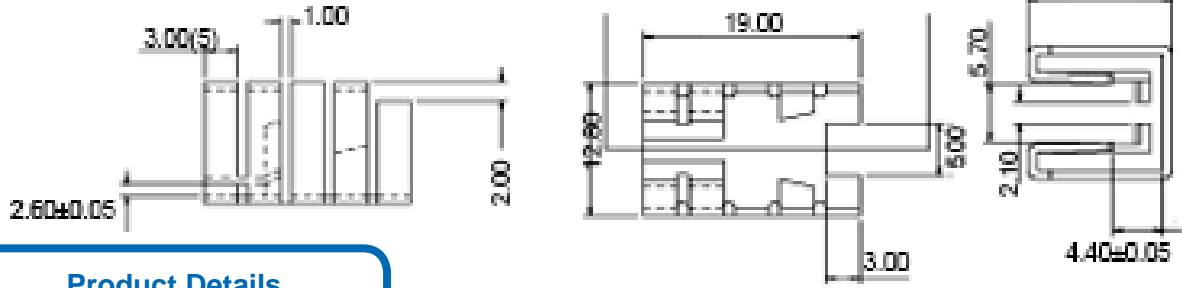
ATS-PCBT1084



Product Details

Length (mm)	Width (mm)	Height (mm)	Tim	Material	Finish	Packaged Cooled	Thermal Resistance (Natural Convection)	R @ 200 LFM	R @ 400 LFM	R @ 600 LFM	R @ 800 LFM
41.4	32.8	19.0	No TIM	Aluminum	Blk Anodized	TO-3	13.5	4.4	3.1	2.1	1.5

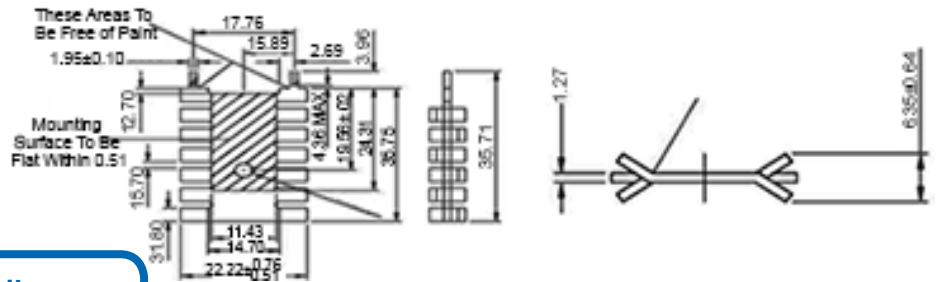
ATS-PCBT1085



Product Details

Length (mm)	Width (mm)	Height (mm)	Tim	Material	Finish	Packaged Cooled	Thermal Resistance (Natural Convection)	R @ 200 LFM	R @ 400 LFM	R @ 600 LFM	R @ 800 LFM
19.0	12.8	12.8	No TIM	Aluminum	Blk Anodized	TO-220	27.3	4.4	3.1	2.1	1.5

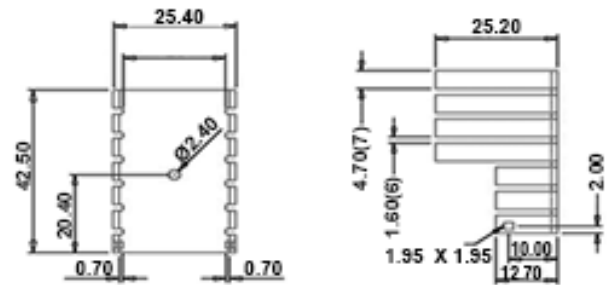
ATS-PCBT1086



Product Details

Length (mm)	Width (mm)	Height (mm)	Tim	Material	Finish	Packaged Cooled	Thermal Resistance (Natural Convection)	R @ 200 LFM	R @ 400 LFM	R @ 600 LFM	R @ 800 LFM
31.8	22.2	6.4	No TIM	Aluminum	Blk Anodized	TO-220	22.0	9.5	6.3	4.8	3.6

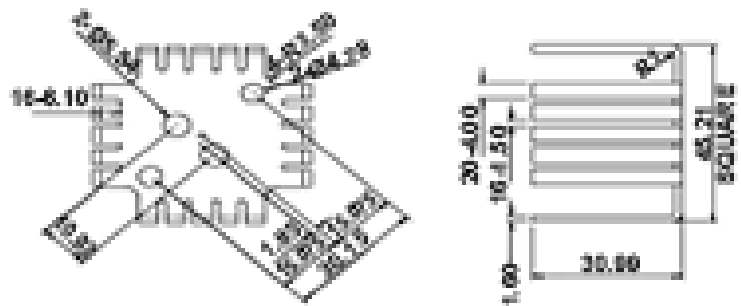
ATS-PCBT1087



Product Details

Length (mm)	Width (mm)	Height (mm)	Tim	Material	Finish	Packaged Cooled	Thermal Resistance (Natural Convection)	R @ 200 LFM	R @ 400 LFM	R @ 600 LFM	R @ 800 LFM
42.5	25.4	25.2	No TIM	Aluminum	Blk Anodized	TO-220	10.0	4.4	3.6	3.0	2.7

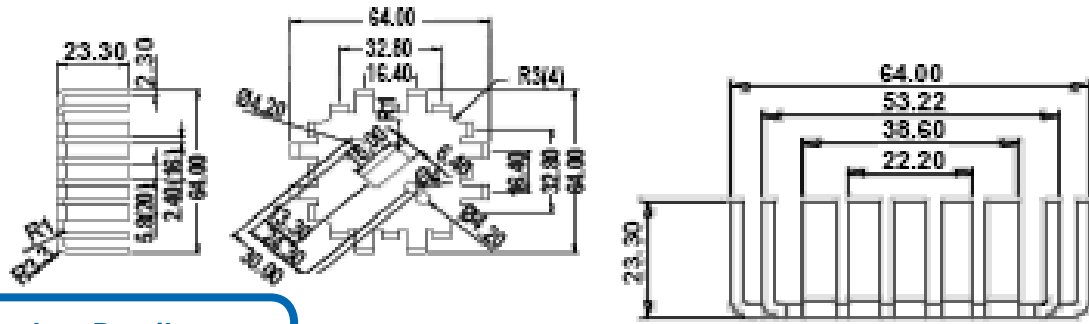
ATS-PCBT1088



Product Details

Length (mm)	Width (mm)	Height (mm)	Tim	Material	Finish	Packaged Cooled	Thermal Resistance (Natural Convection)	R @ 200 LFM	R @ 400 LFM	R @ 600 LFM	R @ 800 LFM
45.2	45.2	31.0	No TIM	Aluminum	Blk Anodized	TO-3	6.0	2.6	1.8	1.4	1.3

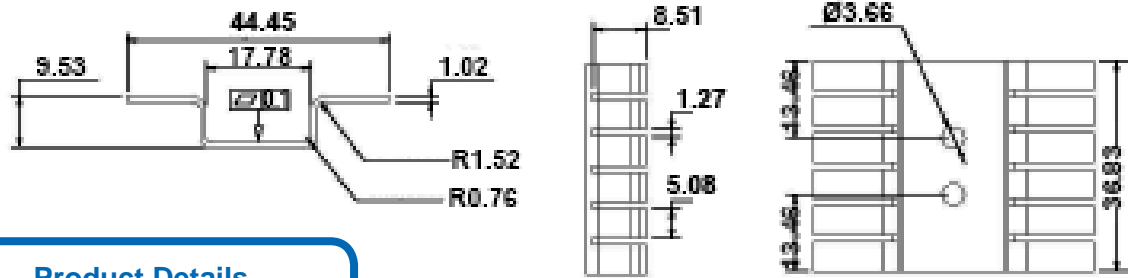
ATS-PCBT1089



Product Details

Length (mm)	Width (mm)	Height (mm)	Tim	Material	Finish	Packaged Cooled	Thermal Resistance (Natural Convection)	R @ 200 LFM	R @ 400 LFM	R @ 600 LFM	R @ 800 LFM
64.0	64.0	23.3	No TIM	Aluminum	Blk Anodized	TO-3	6.0	2.6	1.8	1.4	1.3

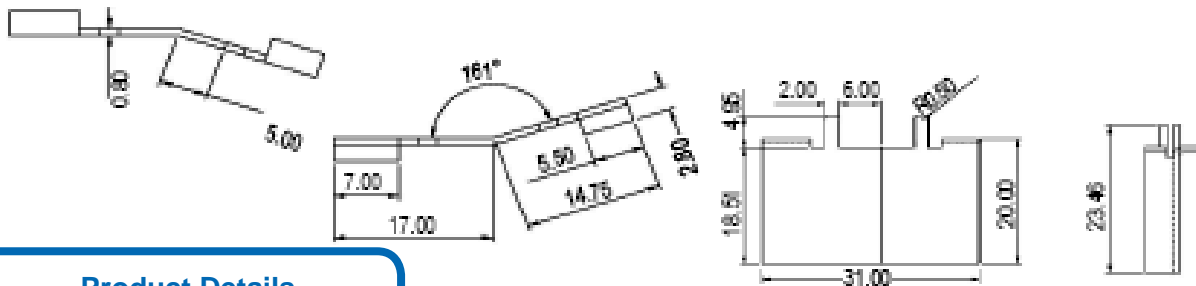
ATS-PCBT1090



Product Details

Length (mm)	Width (mm)	Height (mm)	Tim	Material	Finish	Packaged Cooled	Thermal Resistance (Natural Convection)	R @ 200 LFM	R @ 400 LFM	R @ 600 LFM	R @ 800 LFM
36.8	44.5	9.5	No TIM	Aluminum	Blk Anodized	TO-220 (DUAL)	9.6	3.0	1.7	1.0	0.9

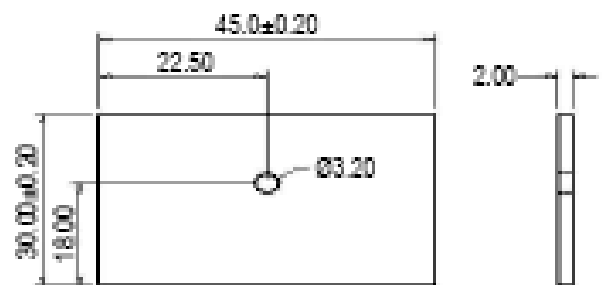
ATS-PCBT1091



Product Details

Length (mm)	Width (mm)	Height (mm)	Tim	Material	Finish	Packaged Cooled	Thermal Resistance (Natural Convection)	R @ 200 LFM	R @ 400 LFM	R @ 600 LFM	R @ 800 LFM
20.0	31.0	0.8	No TIM	Steel	Tin Plated	TO-220	25.0	13.0	11.2	10.3	9.5

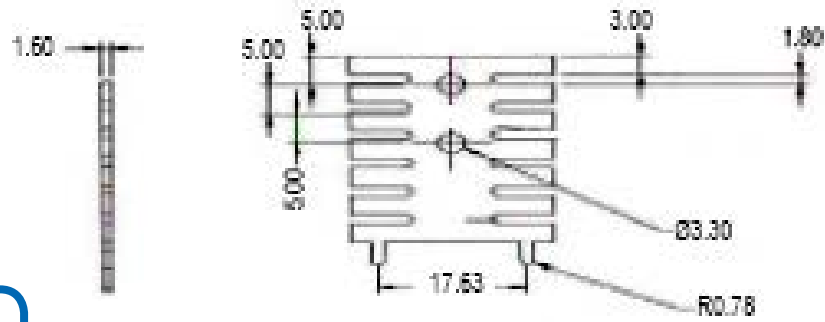
ATS-PCBT1092



Product Details

Length (mm)	Width (mm)	Height (mm)	Tim	Material	Finish	Packaged Cooled	Thermal Resistance (Natural Convection)	R @ 200 LFM	R @ 400 LFM	R @ 600 LFM	R @ 800 LFM
30.0	45.0	2.0	No TIM	Aluminum	None	TO-220	23.0	11.0	9.2	8.3	7.5

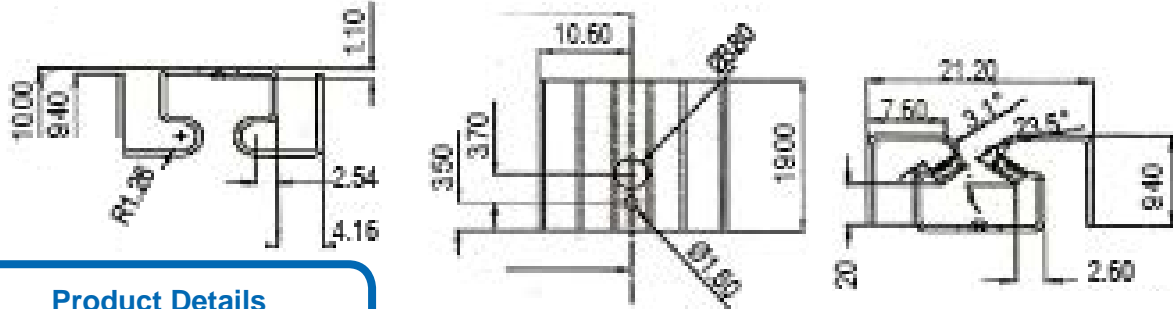
ATS-PCBT1093



Product Details

Length (mm)	Width (mm)	Height (mm)	Tim	Material	Finish	Packaged Cooled	Thermal Resistance (Natural Convection)	R @ 200 LFM	R @ 400 LFM	R @ 600 LFM	R @ 800 LFM
31.8	23.2	1.1	No TIM	Copper	Tin Plated	TO-220	23.0	14.0	10.7	8.6	7.7

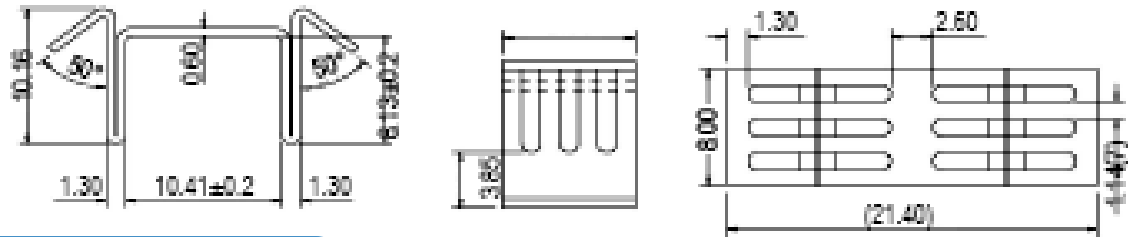
ATS-PCBT1094



Product Details

Length (mm)	Width (mm)	Height (mm)	Tim	Material	Finish	Packaged Cooled	Thermal Resistance (Natural Convection)	R @ 200 LFM	R @ 400 LFM	R @ 600 LFM	R @ 800 LFM
19.0	21.2	10.0	No TIM	Aluminum	Blk Anodized	TO-220	21.2	11.2	8.4	6.0	5.0

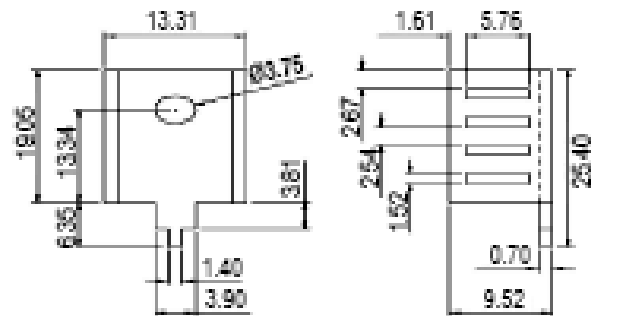
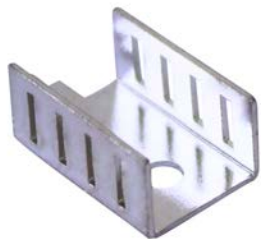
ATS-PCBT1095



Product Details

Length (mm)	Width (mm)	Height (mm)	Tim	Material	Finish	Packaged Cooled	Thermal Resistance (Natural Convection)	R @ 200 LFM	R @ 400 LFM	R @ 600 LFM	R @ 800 LFM
8.0	21.4	10.2	No TIM	Copper	Tin Plated	TO-252	28.0	21.0	16.0	12.5	11.0

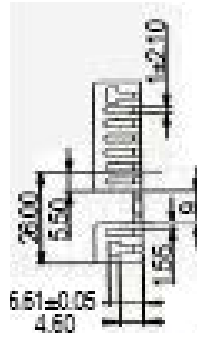
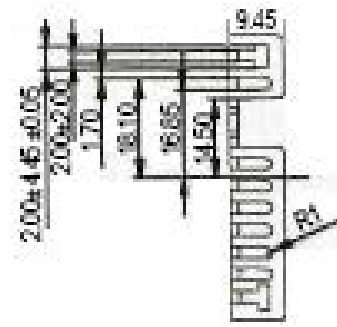
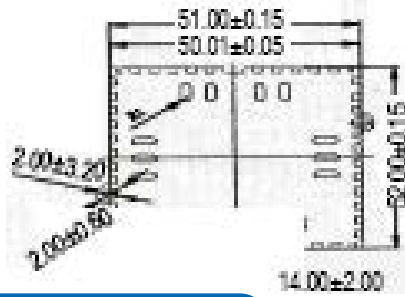
ATS-PCBT1096



Product Details

Length (mm)	Width (mm)	Height (mm)	Tim	Material	Finish	Packaged Cooled	Thermal Resistance (Natural Convection)	R @ 200 LFM	R @ 400 LFM	R @ 600 LFM	R @ 800 LFM
19.1	13.3	9.5	No TIM	Steel	Tin Plated	TO-220	35.7	14.0	8.7	6.6	5.6

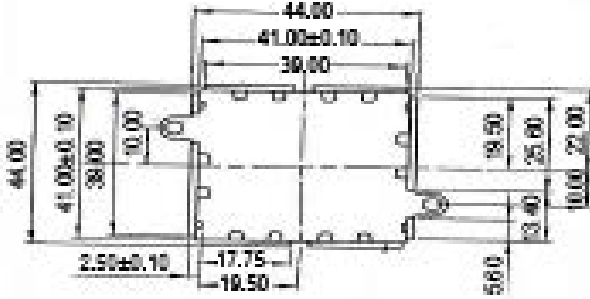
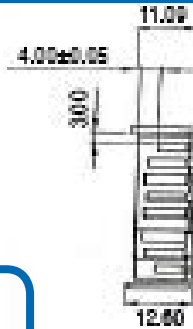
ATS-PCBT1097



Product Details

Length (mm)	Width (mm)	Height (mm)	Tim	Material	Finish	Packaged Cooled	Thermal Resistance (Natural Convection)	R @ 200 LFM	R @ 400 LFM	R @ 600 LFM	R @ 800 LFM
58.0	52.0	1.5	No TIM	Aluminum	Blk Anodized	TO-220	21.0	12.2	9.5	8.0	7.3

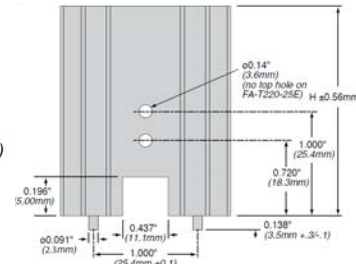
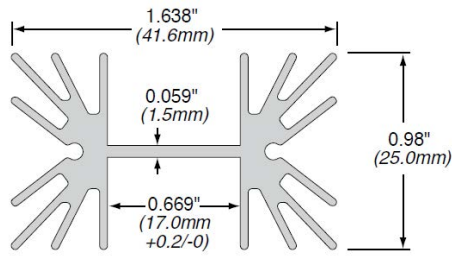
ATS-PCBT1098



Product Details

Length (mm)	Width (mm)	Height (mm)	Tim	Material	Finish	Packaged Cooled	Thermal Resistance (Natural Convection)	R @ 200 LFM	R @ 400 LFM	R @ 600 LFM	R @ 800 LFM
44.0	44.0	1.5	No TIM	Aluminum	Blk Anodized	TO-220	22.0	13.0	10.2	8.5	7.6

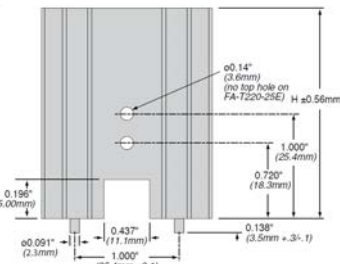
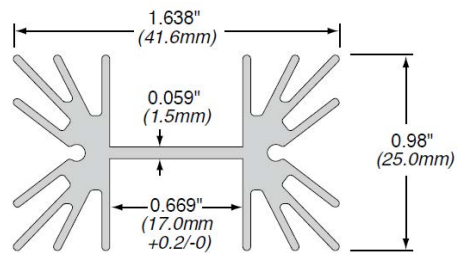
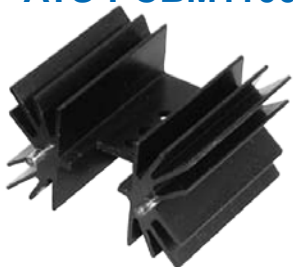
ATS-PCBM1099



Product Details

Length (mm)	Width (mm)	Height (mm)	Tim	Material	Finish	Packaged Cooled	Thermal Resistance (Natural Convection)	R @ 200 LFM	R @ 400 LFM	R @ 600 LFM	R @ 800 LFM
25.4	46.1	25	No TIM	Aluminum	Blk Anodized	TO-218, TO-220, TO-247	4.8	4.2	3	2.3	1.8

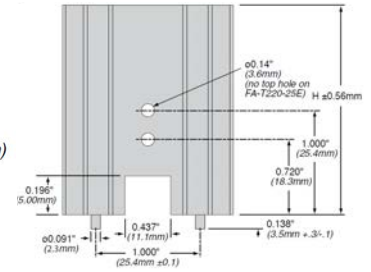
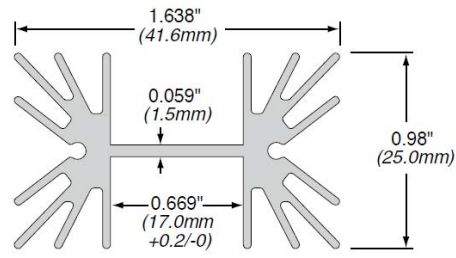
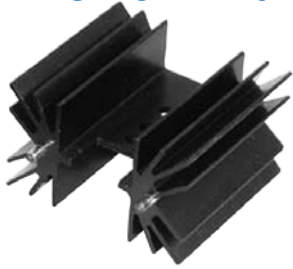
ATS-PCBM1100



Product Details

Length (mm)	Width (mm)	Height (mm)	Tim	Material	Finish	Packaged Cooled	Thermal Resistance (Natural Convection)	R @ 200 LFM	R @ 400 LFM	R @ 600 LFM	R @ 800 LFM
38.1	41.6	25	No TIM	Aluminum	Blk Anodized	TO-218, TO-220, TO-247	3.9	3.1	2.1	1.5	1.3

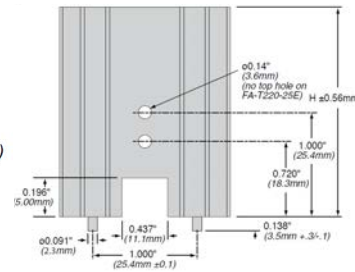
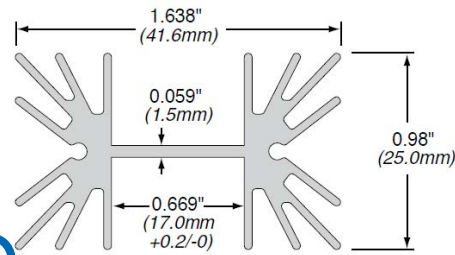
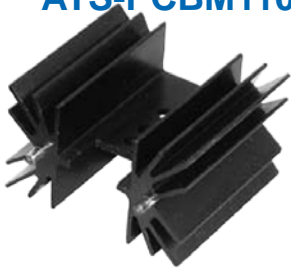
ATS-PCBM1101



Product Details

Length (mm)	Width (mm)	Height (mm)	Tim	Material	Finish	Packaged Cooled	Thermal Resistance (Natural Convection)	R @ 200 LFM	R @ 400 LFM	R @ 600 LFM	R @ 800 LFM
50.8	41.6	25	No Tim	Aluminum	Blk Anodized	TO-218,TO-220,TO-247	3.5	2.5	1.6	1.2	1

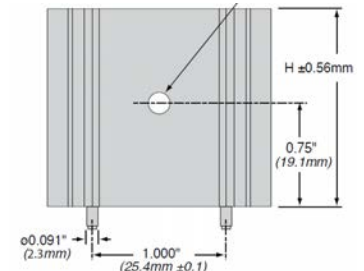
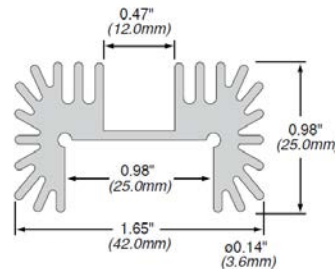
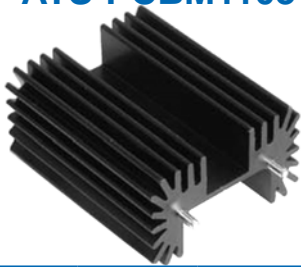
ATS-PCBM1102



Product Details

Length (mm)	Width (mm)	Height (mm)	Tim	Material	Finish	Packaged Cooled	Thermal Resistance (Natural Convection)	R @ 200 LFM	R @ 400 LFM	R @ 600 LFM	R @ 800 LFM
63.5	41.6	25	No Tim	Aluminum	Blk Anodized	TO-218,TO-220,TO-247	3.1	2.5	1.6	1.2	1

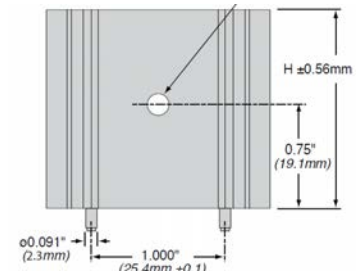
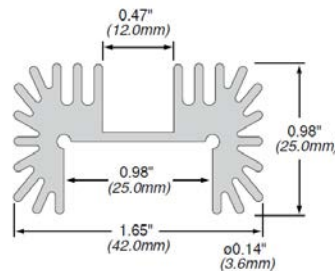
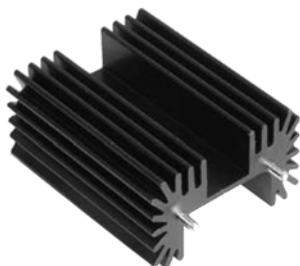
ATS-PCBM1103



Product Details

Length (mm)	Width (mm)	Height (mm)	Tim	Material	Finish	Packaged Cooled	Thermal Resistance (Natural Convection)	R @ 200 LFM	R @ 400 LFM	R @ 600 LFM	R @ 800 LFM
25.4	42	25	No Tim	Aluminum	Blk Anodized	TO-218,TO-220,TO-247	4.7	1.5	1.1	0.8	0.6

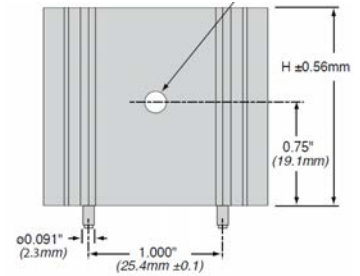
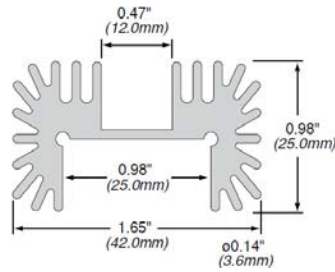
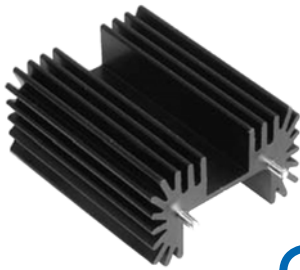
ATS-PCBM1104



Product Details

Length (mm)	Width (mm)	Height (mm)	Tim	Material	Finish	Packaged Cooled	Thermal Resistance (Natural Convection)	R @ 200 LFM	R @ 400 LFM	R @ 600 LFM	R @ 800 LFM
38.1	42	25	No Tim	Aluminum	Blk Anodized	TO-218,TO-220,TO-247	3.8	1.4	1	0.8	0.6

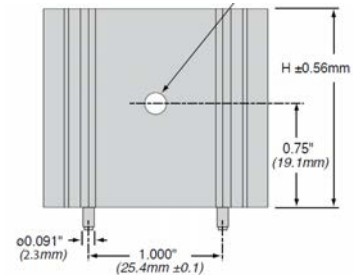
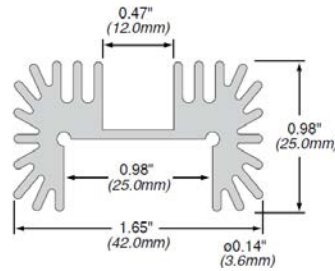
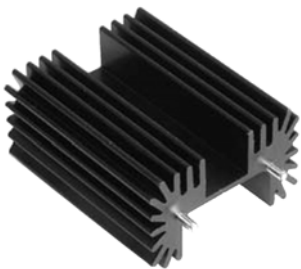
ATS-PCBM1105



Product Details

Length (mm)	Width (mm)	Height (mm)	Tim	Material	Finish	Packaged Cooled	Thermal Resistance (Natural Convection)	R @ 200 LFM	R @ 400 LFM	R @ 600 LFM	R @ 800 LFM
50.8	42	25	No Tim	Aluminum	Blk Anodized	TO-218,TO-220,TO-247	3.4	1.3	0.9	0.7	0.6

ATS-PCBM1106



Product Details

Length (mm)	Width (mm)	Height (mm)	Tim	Material	Finish	Packaged Cooled	Thermal Resistance (Natural Convection)	R @ 200 LFM	R @ 400 LFM	R @ 600 LFM	R @ 800 LFM
63.5	42	25	No Tim	Aluminum	Blk Anodized	TO-218,TO-220,TO-247	3	1	0.7	0.6	0.5

For further technical information, or to place an order, please contact
ATS at 781-760-2800, ats-hq@qats.com, or www.qats.com

X-ON Electronics

Largest Supplier of Electrical and Electronic Components

Click to view similar products for [Heat Sinks](#) category:

Click to view products by [Advanced Thermal Solutions](#) manufacturer:

Other Similar products are found below :

[657-20ABPNE](#) [73452PPBA](#) [A22-4026](#) [120-1873-007](#) [218-40CTE3](#) [231-69PAB-15V](#) [231-75PAB-13V](#) [231-75PAB-15V](#) [253-122ABE-22](#)
[PSC22CB](#) [295-2](#) [CLP212SG](#) [D10100-28](#) [BDN183CBA01](#) [3-21053-4](#) [TX0506-1B](#) [LAE66A3CB](#) [511-3U](#) [73381PPBA](#) [73403PPBA](#) [8191-](#)
[E40](#) [510-12M](#) [529802B00000](#) [D10650-40T5](#) [6225B-MT6G](#) [ATS-54310K-C2-R0](#) [648-51AB](#) [657-20ABPESC](#) [679-25AG](#) [FK 212 CB SA](#)
[FK225 SA L1](#) [241404B91203G](#) [6801G](#) [680-5K](#) [7106DG/TR](#) [SK145 37 5STSTO220](#) [7109DG/TR](#) [TS-11042-CY](#) [S14K35G3S5](#) [8924G](#)
[7717-133DAP](#) [7717-26DAP](#) [4509](#) [SW25-4G](#) [CLP-215](#) [CLP-207](#) [D20850-40-T2](#) [APF30-30-10CB/A01](#) [V8508E](#) [268-85CTE](#)