



# ATVS-NxT™

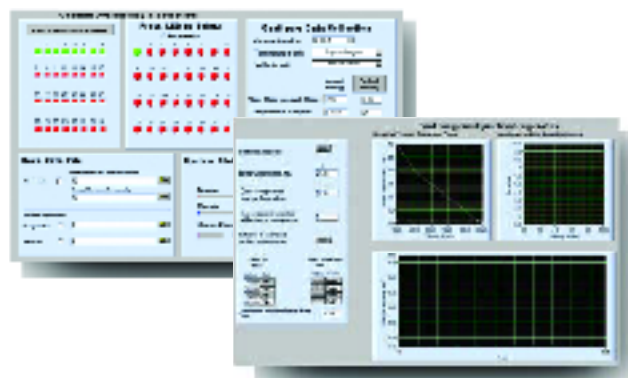
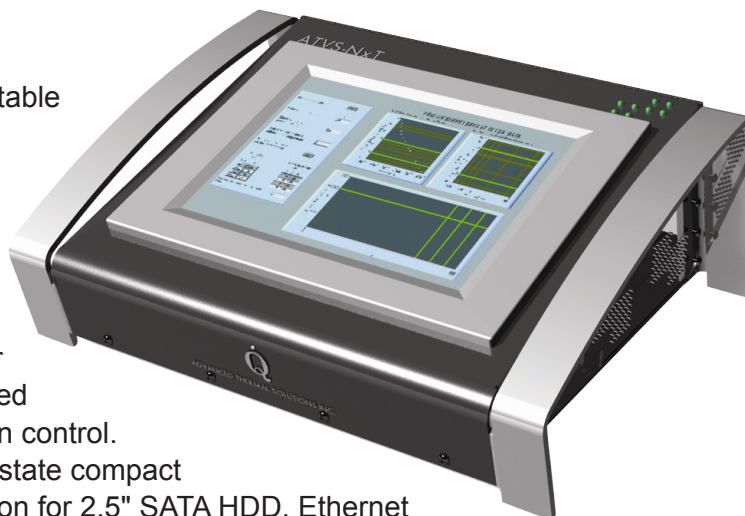
## FULLY PORTABLE AUTOMATIC TEMPERATURE AND VELOCITY SCANNER

The ATVS-NxT™ hot wire anemometer is a fully-portable scanner that provides rapid and highly precise temperature and air velocity measurements in electronic packages.

The ATVS-NxT™ scanner operates with an embedded PC, featuring touch screen control. It includes a 100GB solid state compact flash, 4 USBs and an option for 2.5" SATA HDD. Ethernet connection allows the ATVS-NxT™ to transfer data via network.

The ATVS-NxT™ supports up to 32 sensors for simultaneous, single-point air velocity and temperature measurements in environments where single or multipoint measurements are required. The sensors are calibrated for both low (natural convection) and high velocity flow rates.

The unique and patented sensors are designed to be flexible, robust and low profile to minimize flow disturbance. They can be easily placed anywhere in the test domain. The use of a single sensor to measure both temperature and velocity eliminates errors introduced as a result of the flow being non-isothermal.



stageVIEW™ software for automated data acquisition and reduction

### OVERALL DIMENSIONS (W X L X H)

47 x 43 x 19.7 cm (18.5 x 17 x 7.8")

### TEMPERATURE RANGE

-20 to 120°C (-4 to 248°F) (±1°C)

### FLOW RANGE

0 to 51 m/s (0 to 10,000 ft/min) (± 2%)

### NUMBER OF CHANNELS

32

### SOFTWARE

stageVIEW™

### POWER

110V or 220V

### WEIGHT

8 kg (17.6 lbs.)

### CONNECTION

Ethernet

### FEATURES:

- » **Single Sensor Technology**  
The only system that can measure both temperature and air velocity with a single sensor
- » **Accuracy and Ease of Use**  
Offers research quality results with the ease of use of hand-held meter
- » **Up to 32 Sensors**  
For single point measurement of air velocity & temperature
- » **PCB Testing**  
Test actual or simulated PCBs for thermal and flow distribution
- » **High & Low Speed Calibration**  
Sensors are calibrated for both low (natural convection) and high velocity flows from 0 to 51 m/s (10,000 ft/min)
- » **Embedded Touchscreen PC**  
Fully portable With internal Solid State Flash Disk and Ethernet connections
- » **stageVIEW™ Software**  
For automated data acquisition, reporting and special thermal analysis module for quick evaluation of component temperature
- » **Remote Monitoring**  
Enables remote monitoring of temperature and velocity reading through a LAN or via the Internet.

For further technical information, please contact Advanced Thermal Solutions, Inc. at **1-781-769-2800** or **www.qats.com**



## X-ON Electronics

Largest Supplier of Electrical and Electronic Components

*Click to view similar products for [Multiple Function Sensor Modules](#) category:*

*Click to view products by [Advanced Thermal Solutions](#) manufacturer:*

Other Similar products are found below :

[AD5T](#) [MM7150-AB1](#) [SIBA5-JRAB-DKL](#) [2314277-1](#) [2314277-2](#) [2314291-1](#) [ZMW-SENSOR-1](#) [2316851-1](#) [1-2314277-2](#) [2316852-1](#)  
[2331211-3](#) [2316852-2](#) [2316851-2](#) [1-2314277-1](#) [CS-95HSS-A](#) [CS-205HSS-A](#) [CS-20SHSS-A](#) [CS-125HSS-A](#) [CS-205SSS-A](#) [CS-125SSS-A](#)  
[CS-95SSS-A](#) [eATVS-4](#) [eATVS-8](#) [tvLYT](#) [NGM\\_1](#) [SKU-7000](#) [DFR0759](#) [SG-Link-200](#) [SG-Link-200-OEM](#) [V-Link-200](#) [NGM-1](#) [2JCIE-](#)  
[BU01](#) [K6PM-THMD-EIP](#) [K6PM-THS3232](#) [WYZBEE-SENS-101](#) [OB1203SD-C4V](#) [101020932](#) [101990693](#) [SIBA5-JRAB](#) [SIBA5-JREB](#)  
[SIBA5-JREB-DKL](#) [SIBA-JRA](#) [SIBA-JRAB](#) [SIBA-JRE](#) [SIBA-JREB](#) [SEK SCC30-DB Sample](#) [ESYS11X](#) [ESYS11X+LOPY915](#)  
[ESYS11X+LOPY868](#) [Sensit Discovery 3.1](#)