

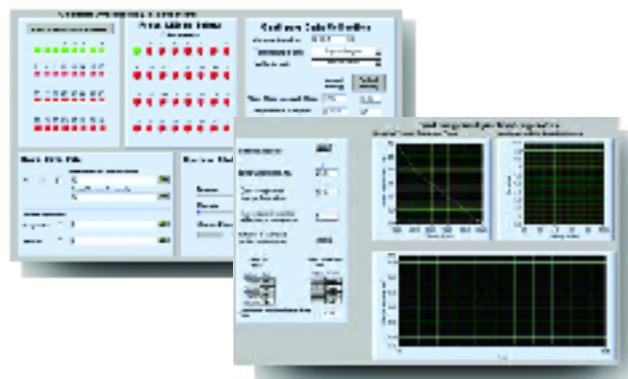
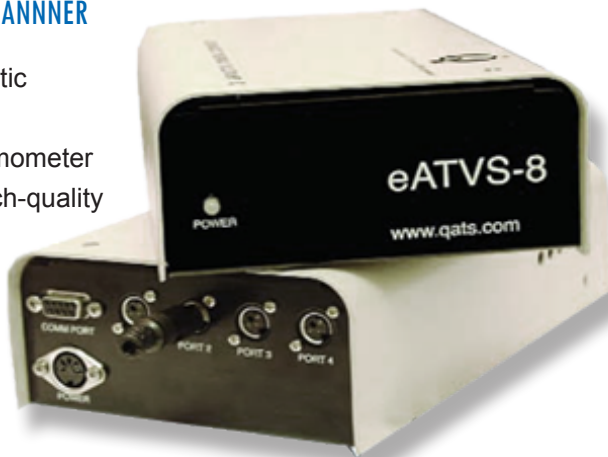


# eATVS-4 & eATVS-8™

## AUTOMATIC TEMPERATURE AND VELOCITY SCANNER

The eATVS-4™ and eATVS-8™ Automatic Temperature and Velocity Scanners are portable, 4- and 8-channel hot wire anemometer systems. Fully automated, these research-quality instruments take accurate single- or multi-point measurements of air temperature, velocity and surface temperature in complex environments, such as PCBs and electronics enclosures. When used as temperature loggers, they can measure both fluid and solid temperatures.

Useable in rackmount or desktop configurations, eATVS-4™ and eATVS-8™ employ patented, fastresponse, omni-directional sensors, which measure both temperature and velocity. This patented single-sensor technology eliminates errors introduced as a result of air flow being non-isothermal. Each precisely calibrated sensor is flexible and robust with a low-profile configuration that allows minimally intrusive mounting throughout the peaks and valleys created by the PCB components. These systems require a PC to operate and utilize the stageVIEW™ software for data acquisition and reporting.



stageVIEW™ software for automated data acquisition and reduction

**OVERALL DIMENSIONS (D X W X H)**  
23.5 mm x 13.4 mm x 6.4 cm  
(9.3" x 5.3" x 2.5")

**TEMPERATURE RANGE**  
30°C to 150°C ± 1°C

**FLOW RANGE**  
0 to 51 m/s (0 to 10,000 FT/MIN) (± 2%)

**NUMBER OF CHANNELS**  
eATVS-4: Up to 4  
eATVS-8: Up to 8

**SOFTWARE**  
stageVIEW™

**POWER**  
110V or 220V

**WEIGHT**  
2 kg (4 lbs.)

### FEATURES:

- » **Single Sensor Technology**  
The only system that can measure both temperature and air velocity with a single sensor
- » **Accuracy and Ease of Use**  
Offers research quality results with the ease of use of hand-held meter
- » **Up to 8 Sensors**  
For simultaneous single point measurement of air velocity & temperature
- » **Connection**  
Requires a PC to operate and is compatible via RS-232 port.
- » **High & Low Speed Calibration**  
Sensors are calibrated for both low (natural convection) and high velocity flows from 0 to 51 m/s (10,000 ft/min)
- » **stageVIEW™ Software**  
For automated data acquisition, reporting and special thermal analysis module for quick evaluation of component temperature

- » **Sensor Ports**  
Measure pressure, velocity, and temp through the ports holes

### APPLICATIONS:

- » **Solid/Liquid Temperature Measurement**
- » **Velocity Measurement**
- » **Heat Sink Characterization**
- » **PCB Testing**
- » **Heat Sink Comparison**
- » **Wind Tunnel Testing**
- » **Thermal Characterization Studies**

For further technical information, please contact Advanced Thermal Solutions, Inc. at 1-781-769-2800 or [www.qats.com](http://www.qats.com)



## X-ON Electronics

Largest Supplier of Electrical and Electronic Components

*Click to view similar products for [Multiple Function Sensor Modules](#) category:*

*Click to view products by [Advanced Thermal Solutions](#) manufacturer:*

Other Similar products are found below :

[AD5T](#) [MM7150-AB1](#) [SIBA5-JRAB-DKL](#) [2314277-1](#) [2314277-2](#) [2314291-1](#) [ZMW-SENSOR-1](#) [2316851-1](#) [1-2314277-2](#) [2316852-1](#)  
[2331211-3](#) [2316852-2](#) [2316851-2](#) [1-2314277-1](#) [CS-95HSS-A](#) [CS-205HSS-A](#) [CS-20SHSS-A](#) [CS-125HSS-A](#) [CS-205SSS-A](#) [CS-125SSS-A](#)  
[CS-95SSS-A](#) [eATVS-4](#) [eATVS-8](#) [tvLYT](#) [NGM\\_1](#) [SKU-7000](#) [DFR0759](#) [SG-Link-200](#) [SG-Link-200-OEM](#) [V-Link-200](#) [NGM-1](#) [2JCIE-](#)  
[BU01](#) [K6PM-THMD-EIP](#) [K6PM-THS3232](#) [WYZBEE-SENS-101](#) [OB1203SD-C4V](#) [101020932](#) [101990693](#) [SIBA5-JRAB](#) [SIBA5-JREB](#)  
[SIBA5-JREB-DKL](#) [SIBA-JRA](#) [SIBA-JRAB](#) [SIBA-JRE](#) [SIBA-JREB](#) [SEK SCC30-DB Sample](#) [ESYS11X](#) [ESYS11X+LOPY915](#)  
[ESYS11X+LOPY868](#) [Sensit Discovery 3.1](#)