



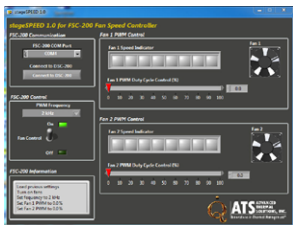
# FSC-200™

## FAN SPEED CONTROLLER

The **FSC-200™** is designed for controlling the fan/fan tray speed in a variety of applications where air flow control is critical for accurate thermal design. **stageSPEED™** software, which is included with the product, enables the user to fully control the fans' performance by adjusting the power from 0 to 100%. **FSC-200™** enables the user to perform a variety of airflow tests during different stages of product design and development, without the need to manipulate the fans power supply at the pre-specified ranges.

One such case during the thermal design process is the desire to know what the temperature of the components is under varying fan speed. This will provide an envelope of safe operation of the device. The **FSC-200™** makes the task easy by simply controlling the fan speed through the software.

The unit communicates via the USB port with a computer and requires no external power source since the same USB port also is used to power up the **FSC-200™**. To power the fan or the fan tray, an external power supply is required with its minimum voltage and current equal to the fan or fan tray power requirements.



stageSPEED™ software

**stageSPEED™** enables the user to choose the PWM frequency of the fans. By entering a % duty cycle value, the fans will operate at that desired percentage of power. Fans can be controlled from 0 to

100% of the maximum allowable power. The system has the safety feature that when the USB cable is disconnected, the fans/fan tray will automatically stop.



Back View

### APPLICATIONS:

- » Telecommunications
- » Automotive
- » Medical Instrumentation
- » Fan Manufacturers
- » Thermal Management
- » Aerospace
- » Air Chambers

### DIMENSIONS (L x W x H)

200 x 224 x 81 mm  
(7.8 x 8.8 x 3.2")

### MAX CURRENT

30 Amps

### MAX VOLTAGE

1,000 VAC

### SOFTWARE

stageSPEED™

### FSC-200 POWER

USB Connection

### WEIGHT

1.2 Kg (2.6lbs)

### COMPUTER

Windows XP or 7

### FEATURES:

- » **Highly Accurate**  
Provides precise control with accuracy of +/- 1%
- » **Multiple Fans**  
Supports up to 30 Amps fans or fan trays
- » **stageSPEED™ Software**  
User friendly application for selecting the PWM frequency from 2 kHz to 40 kHz
- » **Fan Control**  
Controls fan/fan trays from 0 to 100% PWM with 0.5% resolution
- » **USB Connection**  
Provides connection for data communication
- » **Air Flow Testing**  
Variable fan speed provides the ability for complete analysis
- » **Unrestricted Voltage**  
No restriction for fan voltage

### BENEFITS:

- » **Precision Control**  
Full control of airflow from fans/fan trays 0-100% of max. allowable
- » **Variable Range of Fan Speeds**  
Tests component temperatures under varying fan speeds
- » **Precise Easy-to-Use Operating Programs**  
Minimize training and start-up times
- » **Connects via USB Port To Any PCB**  
Only power supply is required for a source of energy for the fans
- » **Pre-Installed stageSPEED™ Software**  
Allows user to choose PWM frequency of fans
- » **Safety Features**  
Fans automatically stop when the USB cable is disconnected
- » **Research Quality Device**  
UL parts, high repeatability
- » **Compact Bench-top Profile**  
Able to fit in constricted areas
- » **Supports Multiple Fans**  
UL parts, high repeatability
- » **Reduces Human Error**  
Software controls the fan speed throughout the process

For further technical information, please contact Advanced Thermal Solutions, Inc. at **1-781-769-2800** or **www.qats.com**

## X-ON Electronics

Largest Supplier of Electrical and Electronic Components

*Click to view similar products for [Environmental Test Equipment](#) category:*

*Click to view products by [Advanced Thermal Solutions](#) manufacturer:*

Other Similar products are found below :

[CW40](#) [F150C10E3DRT](#) [F150LTC20](#) [F150CD10E2](#) [F150L75](#) [F150LRS](#) [2837806](#) [4328074](#) [4366444](#) [S-11](#) [382153](#) [700PTP-1](#) [GEO-](#)  
[CABLE-REEL-50M](#) [H300](#) [F150-SLC50](#) [AW-CO-1000](#) [AW-H2S-100](#) [AW-NmHc-100](#) [ES1-CO-1000-01](#) [P 2801](#) [P 2802](#) [TM-197](#) [ULD-](#)  
[420-EUR](#) [TM-192](#) [TM-192D](#) [TM-305U](#) [TM-414](#) [UT309C](#) [EL-P-TC-T-SURFACE](#) [UT301C+](#) [1500000059](#) [HS115](#) [MR59](#) [12227021](#)  
[13123602](#) [13123661](#) [12255930](#) [30171091](#) [30198712](#) [30198755](#) [30209323](#) [12228657](#) [12229067](#) [12230090](#) [7358958](#) [12231398](#) [12231487](#)  
[7390674](#) [7390682](#) [12231550](#)