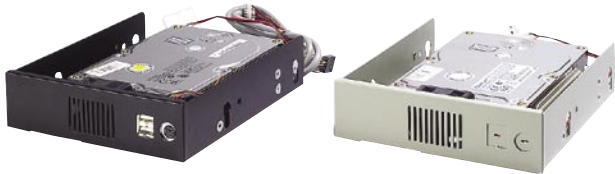


# Accessories

## 5.25 Industrial Disk Tray

### IDT-5101

Shockproof Industrial Hard Disk Drive Tray with Cooling Fan and Optional Front USB and PS/2 Interfaces



- Accepted HDD: 1 x 3.5"
- Cooling Fan: 1 x 7 CFM
- Material: Heavy duty steel plate with coating
- Color Codes: 414U (Gray), 4C2X (Black)
- Dimensions (W x H x D): 148.5 x 42.6 x 171 mm (5.85" x 1.68" x 6.73")
- Net Weight: 400 g (0.88 lb)
- P/N: IDT-5101, IDT-5101-BLK  
IDT-5121, IDT-5121-BLK with dual USB & PS/2

## Connectors and Cables



### P/N 170000719

USB cable with four ports, 30.5 cm

- The key is in pin #10

### P/N 1700002314

USB cable with four ports, 30.5cm

- For AIMB-764, 762, 760, 750, 744, 742, 562, 560, 556, 554, 542, PCA-6189, PCE-5120, PCE-7210
- The key is in pin #9



### P/N 1700100170

USB cable with dual ports, 17.5 cm

- The key is in pin #10

### P/N 1700003195

USB cable with dual ports, 17.5 cm

- For AIMB-764, 762, 760, 750, 744, 742, 562, 560, 556, 554, 542, PCA-6189, PCE-5120, PCE-7210
- The key is in pin #9



### P/N 1700100301

USB cable with dual ports, 30 cm

- The key is in pin #10

### P/N 1700002204

USB cable with dual ports, 27cm

- For AIMB-764, 762, 760, 750, 744, 742, 562, 560, 556, 554, 542, PCA-6189, PCE-5120, PCE-7210
- The key is in pin #9



### P/N 1700060202

Y-cable for PS/2 mouse & keyboard for CPU card



### P/N 1700060201

Y-cable for PS/2 mouse & AT keyboard for CPU card



### P/N 1700000259

15-pin to 9-pin D-sub VGA cable, 20 cm



### P/N 1701260305

Serial and parallel ports with cables and bracket

## X-ON Electronics

Largest Supplier of Electrical and Electronic Components

*Click to view similar products for [Computer Cables](#) category:*

*Click to view products by [Advantech](#) manufacturer:*

Other Similar products are found below :

[68809-0004](#) [8F36-AAA105-1.00](#) [IB63](#) [CB-716EB-RS](#) [CB-716P8P9-RS](#) [CBK-11-290K-00](#) [ACL-10550](#) [ACL-10568-2](#) [ACL-10568-5](#)  
[427522400-3](#) [32102-021500-200-RS](#) [426091300-3](#) [48000023](#) [10114976-P015002LF](#) [10111838-S444ALF](#) [88761-6101](#) [NT631C-CN321-EU](#)  
[ACL-10568NF-1](#) [MIKROE-2092](#) [PCL-101100R-2E](#) [1700009405](#) [PS/2 Cable](#) [NT31C-CN323-EU](#) [PCL-10168H-1E](#) [68801-1905](#) [111068-](#)  
[1015](#) [100436-1107](#) [68801-0630](#) [68801-3612](#) [68801-3618](#) [205058-1002](#) [PS2NK](#) [SATA cable](#) [96021-0000-00-0](#) [FAK-SMZSMZ 5M](#) [FAK-](#)  
[SMZSMZ-3M](#) [ACC-500-200-R](#) [iW-C40-PCIe08-C1](#) [1700001531](#) [96048-0000-00-0](#) [96054-0000-00-0](#) [SATA III cable 30cm, down/straight](#)  
[cab-Pico-ITX-LVDS](#) [PCL-101100SB-2E](#) [AXXSTCBLQAT](#) [NT31C-KBA05](#) [A2U4PSWCXCXK1](#) [2 port SATA to 5 pin,L=200mm](#) [P782-](#)  
[006-DH](#) [ACL-10568NF-2](#)