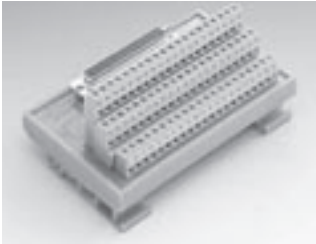


# ADAM-3900 Series

Wiring Terminals for  
DIN-rail Mounting



## ADAM-3962

**DB62 Wiring Terminal for  
DIN-rail Mounting**

### Features

- Low cost universal DIN-rail mounting screw terminal module for DA&C cards with DB62 female connector
- Screw-clamp terminal blocks allow easy and reliable connections
- Case dimensions (W x L x H): 77.5 x 124.5 x 63.5 mm (3.1" x 4.9" x 2.5")

### To Be Used With

PCI-1243U, PCI-1762



## ADAM-3968/50

**68-pin SCSI-II to Two 50-pin Box  
Header for DIN-rail Mounting**

### Features

- Low cost universal DIN-rail mounting screw terminal module for PC-LabCard™ products with 68-pin SCSI-II connectors
- Converts one 68-pin SCSI-II connector to two 50-pin Opto-22 compatible box headers
- Case dimensions (W x L x H): 77.0 x 101.0 x 54.3 mm (3.0" x 4.0" x 2.1")

### To Be Used With

PCI-1751, PCI-1753, PCI-1753E



## ADAM-3968

**68-pin SCSI-II Wiring Terminal  
for DIN-rail Mounting**

### Features

- Low cost universal DIN-rail mounting screw terminal module for industrial applications with 68-pin SCSI-II female connector
- Case dimensions (W x L x H): 77.5 x 191.2 x 51 mm (3.1" x 8.4" x 2.0")

### To Be Used With

PCI-1710/1710L, PCI-1710HG/1710HGL, PCI-1711/1711L, PCI-1712/1712L, PCI-1716/1716L, PCI-1741U, PCI-1742U, PCI-1747U, PCI-1721, PCI-1723, PCI-1751, PCI-1753/1753E, PCI-1723, PCI-1780U



## ADAM-3978

**DB78 Wiring Terminal for  
DIN-rail Mounting**

### Features

- Mounting Low cost universal DIN-rail mounting screw terminal module for industrial applications with DB78 female connector
- Case dimensions (W x L x H): 86 x 191 x 42 mm (3.39" x 7.51" x 1.65")

### To Be Used With

MIC-3753, PCI-1756



## ADAM-3968/20

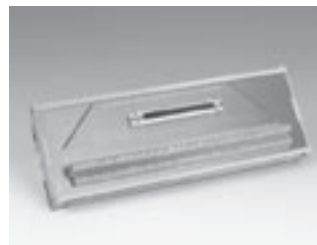
**68-pin SCSI-II to Three 20-pin  
Wiring Terminal Module for  
DIN-rail Mounting**

### Features

- Low cost universal DIN-rail mounting screw terminal module for PC-LabCard™ products with 68-pin SCSI-II connectors
- Converts one 68-pin SCSI-II connector to three 20-pin connectors
- Case dimensions (W x L x H): 77.5 x 80 x 54.3 mm (3.1" x 3.2" x 2.1")

### To Be Used With

PCI-1751, PCI-1753, PCI-1753E



## ADAM-39100

**100-pin SCSI-II Wiring Terminal  
for DIN-rail Mounting**

### Features

- Low cost universal DIN-rail mounting screw terminal module for industrial applications with 100 pin SCSI-II female connector
- Case dimensions (W x L x H): 80 x 230 x 42 mm (3.14" x 9.05" x 1.65")

### To Be Used With

PCI-1755

## X-ON Electronics

Largest Supplier of Electrical and Electronic Components

*Click to view similar products for [Terminal Block Interface Modules](#) category:*

*Click to view products by [Advantech](#) manufacturer:*

Other Similar products are found below :

[73-551-6002I](#) [GCN1MX25B](#) [DIN-50P-01](#) [DIN-68H-01](#) [DIN-96DI-01](#) [2291901](#) [2295185](#) [2907794](#) [2M10FCL](#) [FLKM-2I/O](#) [FLKM-4I/O](#)  
[2281759](#) [2906251](#) [2907808](#) [5601749](#) [5541962](#) [1776613-1](#) [GCN1-004A](#) [ADAM-3920R-AE](#) [060-6827-06](#) [2311030](#) [2287708](#) [XW2C-20G6-](#)  
[IO16](#) [GCN1-T](#) [MACX](#) [MCR-VAC](#) [5775235](#) [ADAM-3956-BE](#) [XW6T-COM2.5X20YL](#) [XW6T-COM1.5X8BL](#) [XW6T-COM1.5X16BL](#)  
[XW6T-COM1.5X20YL](#) [XW6T-COM1.5X16YL](#) [XW6T-COM1.5X20RD](#) [XW6T-COM1.5X20BL](#) [XW6T-COM2.5X8BL](#) [1976610000](#) [UM](#)  
[45-D50SUB/B/ZFKDS](#) [5541234](#) [410-261](#) [2906243](#) [2906915](#) [2907706](#) [ADAM-3909-AE](#) [ADAM-3920-AE](#) [ADAM-3925-AE](#) [ADAM-3937-](#)  
[BE](#) [ADAM-3950-AE](#) [ADAM-3951-BE](#) [ADAM-3968-AE](#) [ADAM-3968/50-AE](#)