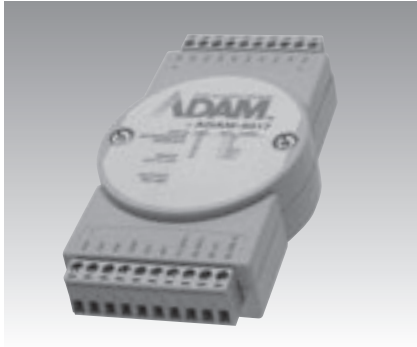


ADAM-4017/4017+ ADAM-4018/4018+ ADAM-4019+

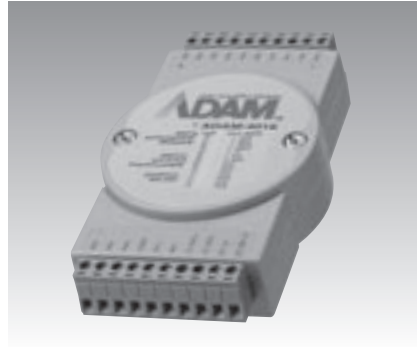
8-ch Analog Input Modules with Modbus®

8-ch Thermocouple Input Modules with Modbus

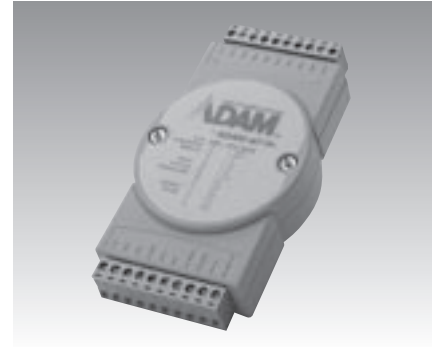
8-ch Universal Analog Input Module with Modbus



ADAM-4017/4017+ CE FCC FM APPROVED



ADAM-4018/4018+ CE FCC FM APPROVED



ADAM-4019+ CE FCC

Specifications

General

- Power Consumption 1.2 W @ 24 V_{DC}
- Watchdog Timer ADAM-4017: System (1.6 second)
ADAM-4017+: System (1.6 second) & Communication
- Support Protocol ASCII command (ADAM-4017)
ASCII command and Modbus/RTU (ADAM-4017+)

Analog Input

- Channels ADAM-4017: 6 differential, and 2 single-ended
ADAM-4017+: 8 differential
- Channel Independent Configuration ADAM-4017+ only
- Input Impedance Voltage: 20 MΩ
Current: 120 Ω (4017+ only)
- Input Type mV, V, mA
- Input Range ADAM-4017: ±150 mV, ±500 mV, ±1 V, ±5 V, ±10 V, ±20 mA
ADAM-4017+: ±150 mV, ±500 mV, ±1 V, ±5 V, ±10 V, ±20 mA, 4 ~ 20 mA

Specifications

General

- Power Consumption 0.8 W @ 24 V_{DC}
- Watchdog Timer ADAM-4018: System (1.6 second)
ADAM-4018+: System (1.6 second) & Communication
- Support Protocol ASCII command (ADAM-4018)
ASCII command and Modbus/RTU (ADAM-4018+)

Analog Input

- Channels ADAM-4018: 6 differential, and 2 single-ended
ADAM-4018+: 8 differential
ADAM-4018+ only
- Channel Independent Configuration
- Input Impedance Voltage: 20 MΩ
Current: 120 Ω (4018+ only)
- Input Type ADAM-4018 Thermocouple, mV, V, mA
ADAM-4018+ Thermocouple, mA
- Voltage/Current Input Range ADAM-4018 ±15 mV, ±50 mV, ±100 mV, ±500 mV, ±1 V, ±2.5 V, ±20 mA
ADAM-4018+ ±20 mA, 4 ~ 20 mA
- T/C Types and Temperature Ranges

J	0 ~ 760 °C	R	500 ~ 1750 °C
K	0 ~ 1370 °C	S	500 ~ 1750 °C
T	-100 ~ 400 °C	B	500 ~ 1800 °C
E	0 ~ 1000 °C		
- Burn-out Detection All T/C (ADAM-4018+ only)

Specifications

General

- Power Consumption 1.0 W @ 24 V_{DC}
- Watchdog Timer System (1.6 second) & Communication
- Support Protocol ASCII command and Modbus/RTU

Analog Input

- Channels 8 differential channels for individual input type
Yes
- Channel Independent Configuration
- Input Impedance Voltage: 20 MΩ
Current: 120 Ω
- Input Type T/C, mV, V, mA
- Voltage/Current Input Range ±1 V, ±2.5 V, ±5 V, ±10 V, ±100 mV, ±500 mV, ±20 mA, 4 ~ 20 mA
- T/C Types and Temperature Ranges

J	0 ~ 760 °C	R	500 ~ 1750 °C
K	0 ~ 1370 °C	S	500 ~ 1750 °C
T	-100 ~ 400 °C	B	500 ~ 1800 °C
E	0 ~ 1000 °C		
- Burn-out Detection 4 ~ 20 mA & all T/C

Common Specifications

General

- Power Input Unregulated 10 ~ 30 V_{DC}
- Connectors 2 x Plug-in terminal block (#14 ~ 22 AWG)

Analog Input

- Accuracy Voltage mode: ±0.1% or better
Current mode: ±0.2% or better
- Resolution 16-bit
- Sampling Rate 10 sample/second (total)

- Isolation Voltage 3000 V_{DC}
- Overvoltage Protection ±35 V_{DC}
- CMR @ 50/60 Hz 120 dB
- NMR @ 50/60 Hz 100 dB
- Span Drift ±25 ppm/°C
- Zero Drift ±6 μV/°C
- Built-in TVS/ESD Protection

Environment

- Humidity 5 ~ 95% RH
- Operating Temperature -10 ~ 70 °C (-14 ~ 158 °F)
- Storage Temperature -25 ~ 85 °C (-13 ~ 185 °F)

Ordering Information

- ADAM-4017 8-ch Analog Input Module
- ADAM-4017+ 8-ch Analog Input Module with Modbus
- ADAM-4018 8-ch Thermocouple Input Module
- ADAM-4018+ 8-ch Thermocouple Input Module with Modbus
- ADAM-4019+ 8-ch Universal Analog Input Module with Modbus

X-ON Electronics

Largest Supplier of Electrical and Electronic Components

Click to view similar products for [I/O Modules](#) category:

Click to view products by [Advantech](#) manufacturer:

Other Similar products are found below :

[70L-IDC5S](#) [70L-OAC-L](#) [70Z3289-4](#) [G21960000700](#) [G21960002700](#) [G88104401](#) [GUR02](#) [OACU](#) [PB16H](#) [SM-IDC15](#) [G77-S](#) [G78-16-E](#)
[GP34829091724](#) [GP34960005700](#) [JQP4](#) [ODC-24A](#) [IDC5P](#) [FC6A-N16B1](#) [6421](#) [FC6A-N32B3](#) [70MRCQ32-HL](#) [70Z5120](#) [C200H-LK201-](#)
[V1](#) [G3TA-OA202SZ-US](#) [DC12](#) [GT1-OD16](#) [GT1-AD04CST](#) [GT1-DA04](#) [B7AM-6BS](#) [GRT1-ML2](#) [GRT1-TS2P](#) [CRT1-ID16TAH-1](#)
[70GRCQ24-HS](#) [CRT1-ID08](#) [G7TC-ID16](#) [DC24V](#) [CRT1-ID08-1](#) [84110210](#) [6422](#) [AIIS-DIO32-00A1E](#) [84110410](#) [GT1-OD16MX](#) [GRT1-PC8](#)
[G7VC-OC16-B7](#) [G7TC-OC08-1](#) [DC24V](#) [G7TC-IA16](#) [AC200/220V](#) [G7TC-OC08](#) [DC24V](#) [70MRCK24-DIN](#) [2736505](#) [ODC5AQ](#) [PI/NI-](#)
[2D/24](#) [FC6A-KC1C](#)