

# ADAM-5017UH

# ADAM-5018

# ADAM-5018P

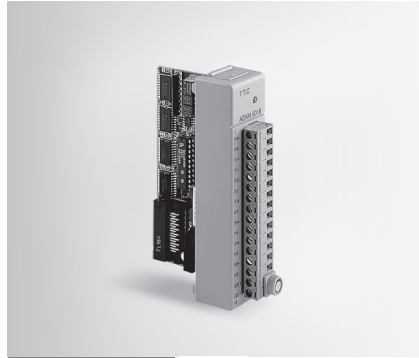
## 8-ch Ultra High Speed Analog Input Module

## 7-ch Thermocouple Input Module

## 7-ch Thermocouple Input Module with Independent Input Range



ADAM-5017UH



ADAM-5018



ADAM-5018P



### Specifications

#### General

- **Certification** CE
- **Connectors** 1 x Plug-in screw terminal (# 14 ~ 22 AWG)
- **Enclosure** ABS+PC
- **Power Consumption** 2.2 W (max.)

#### Analog Input

- **Accuracy**  $\pm 0.1\%$  or better
- **Bandwidth** 200 kHz
- **Channels** 8 differential
- **Differential Non-linear**  $\pm 1$  LSB
- **Input Impedance** Voltage: 2 M $\Omega$   
Current: 120  $\Omega$  (Build-in)
- **Integral Non-linear**  $\pm 1$  LSB
- **Input Range**  $\pm 10$  V,  $+0 \sim 10$  V,  
 $0 \sim 20$  mA,  $+4 \sim 20$  mA
- **Low pass filter** Configured by User
- **Resolution** 12-bit
- **Sampling Rate** Depends on base unit  
ADAM-5000/485 & 5000E:  
100 Samples/sec max (Total): one ADAM-5017UH installed  
ADAM-5000/TCP & 5000L/TCP:  
100 Samples/sec max (Total) :one ADAM-5017UH installed  
ADAM-5510 :  
200K Samples/sec max (Single Channel): one ADAM-5017UH installed  
ADAM-5550 & ADAM-5560:  
1K Samples/sec max(single channel): one ADAM-5017UH installed  
\*Depending on the performance of client server or controller
- **Signal Input Bandwidth** 200 kHz for both voltage and current inputs

#### Protection

- **Isolation Voltage** 3,000 V<sub>DC</sub>
- Note:**
- 1) The voltage difference between any two pins must not exceed 15 V
  - 2) Distinct range settings allowed on each channel
- Note: Not support ADAM-5510KW series

### Ordering Information

- **ADAM-5017UH** 8-ch Ultra High Speed Analog Input Module

### Specifications

#### General

- **Certification** CE, FM
- **Connectors** 1 x Plug-in screw terminal (# 14 ~ 22 AWG)
- **Enclosure** ABS+PC
- **Power Consumption** 0.63 W (max.)

#### Thermocouple Input

- **Accuracy** Voltage mode:  $\pm 0.1\%$  or better  
Current mode:  $\pm 0.2\%$  or better
- **Bandwidth** 13.1 Hz @ 50 Hz  
15.72 Hz @ 60 Hz
- **Channels** 7 differential
- **CMR @ 50/60 Hz** 92 dB min
- **Input Impedance** 2 M $\Omega$
- **Input Range**  $\pm 15$  mV,  $\pm 50$  mV,  $\pm 100$  mV,  $\pm 500$  mV,  
 $\pm 1$  V,  $\pm 2.5$  V,  $\pm 20$  mA  
mV, V, mA, thermocouple
- **Input Type** 16-bit
- **Resolution** 16-bit
- **Sampling Rate** 10 samples/sec. (total)
- **Span Drift**  $\pm 25$  PPM/ $^{\circ}$ C
- **Zero Drift**  $\pm 6$   $\mu$ V/ $^{\circ}$ C
- **T/C Type and Temperature Range**

J	0 $^{\circ}$	~	760 $^{\circ}$ C
K	0 $^{\circ}$	~	1,370 $^{\circ}$ C
T	-100 $^{\circ}$	~	400 $^{\circ}$ C
E	0 $^{\circ}$	~	1,000 $^{\circ}$ C
R	500 $^{\circ}$	~	1,750 $^{\circ}$ C
S	500 $^{\circ}$	~	1,750 $^{\circ}$ C
B	500 $^{\circ}$	~	1,800 $^{\circ}$ C

#### Protection

- **Fault and Overvoltage Protection** Withstands overvoltage up to  $\pm 35$  V
- **Isolation Voltage** 3,000 V<sub>DC</sub>

### Ordering Information

- **ADAM-5018** 7-ch Thermocouple Input Module
- **ADAM-5018SK** ADAM-5018 with CJC kit/ external

### Specifications

#### General

- **Certification** CE, FCC class A
- **Connectors** 1 x Plug-in screw terminal (# 14 ~ 22 AWG)
- **Enclosure** ABS+PC
- **Power Consumption** 0.63 W (max.)

#### Thermocouple Input

- **Accuracy** Voltage mode:  $\pm 0.1\%$  or better  
Current mode:  $\pm 0.2\%$  or better
- **Bandwidth** 13.1 Hz @ 50 Hz  
15.72 Hz @ 60 Hz
- **Channels** 7 (differential, each channel can be configured with different range)
- **CMR @ 50/60 Hz** 92 dB min
- **Input Impedance** 20 M $\Omega$ . (Build-in 120  $\Omega$ . Register for Current Input)
- **Input Range and Types**

Thermocouple			
J	0	~	760 $^{\circ}$ C
K	0	~	1,370 $^{\circ}$ C
T	-100	~	400 $^{\circ}$ C
E	0	~	1,000 $^{\circ}$ C
R	500	~	1,750 $^{\circ}$ C
S	500	~	1,750 $^{\circ}$ C
B	500	~	1,800 $^{\circ}$ C
Current Voltage			
		$\pm 20$ mA,	4 ~ 20 mA
		$\pm 15$ mV (0.2%),	$\pm 50$ mV,
		$\pm 100$ mV,	$\pm 500$ mV
		$\pm 1$ V,	$\pm 2.5$ V
			16-bit
			10 samples/sec. (total)
			$\pm 25$ PPM/ $^{\circ}$ C
			$\pm 6$ $\mu$ V/ $^{\circ}$ C
			200 V <sub>DC</sub>
- **Resolution** 16-bit
- **Sampling Rate** 10 samples/sec. (total)
- **Span Drift**  $\pm 25$  PPM/ $^{\circ}$ C
- **Zero Drift**  $\pm 6$   $\mu$ V/ $^{\circ}$ C
- **High Common Mode** 200 V<sub>DC</sub>

#### Protection

- **Fault and Overvoltage Protection** Withstands overvoltage up to  $\pm 35$  V
- **Isolation Voltage** 3,000 V<sub>DC</sub>
- **Filter function** Yes
- **Built-in TVS/ESD Protection**

Note: Not support ADAM-5510KW series

### Ordering Information

- **ADAM-5018P** 7-ch Thermo. Input Module w/ Ind. Input Range

## X-ON Electronics

Largest Supplier of Electrical and Electronic Components

*Click to view similar products for [I/O Modules](#) category:*

*Click to view products by [Advantech](#) manufacturer:*

Other Similar products are found below :

[70L-OAC-L](#) [G21960000700](#) [G34960002700](#) [G88104401](#) [IDC-5B](#) [OACU](#) [C4SWOUT](#) [FC6A-T32K3](#) [SNAP-OAC5MA](#) [FC6A-N16B3](#)  
[FC6A-N32B3](#) [FC6A-T16P3](#) [G3TAOD201SDC24](#) [PB32HQ](#) [PB16T](#) [PB8](#) [PB8H](#) [C200H-OD211](#) [GT1-AD04CST](#) [GT1-DA04](#) [70GRCQ24-](#)  
[HS](#) [M-OAC5](#) [G4OAC24AMA](#) [2736505](#) [6202](#) [6402](#) [IL MOD BK DI8 DO4-PAC](#) [FC6A-J2C1](#) [FC6A-KC1C](#) [FC6A-N08A11](#) [FC6A-M24BR1](#)  
[FC6A-K4A1](#) [FC6A-T32P3](#) [9-1393028-2](#) [GP32900003700](#) [641-480-5022](#) [PB16H](#) [WISE-4050/LAN-B](#) [WISE-S614T-A](#) [ADAM-4068-C](#)  
[56475](#) [ADAM-4017+-F](#) [ADAM-4118-C](#) [AMAX-4856-B](#) [WISE-4050-B](#) [ADAM-4051-C](#) [ADAM-4053-F](#) [GT1-AD08MX](#) [TM5SDO6TBFS](#)  
[70Q3446](#)