

AMAX-5001

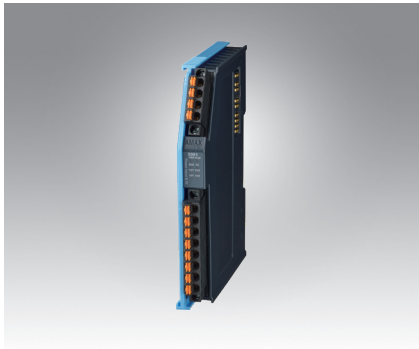
AMAX-5074

AMAX-5079

Smart Power Input Module with 4-ch DI

EtherCAT Coupler with ID Switch

EtherCAT Extension



AMAX-5001



AMAX-5074



AMAX-5079



Specifications

General

- **Certification** CE, FCC class A
- **Connector** Pluggable 4P+8P push-in terminal (#24-16 AWG)
- **Enclosure** PC
- **Power Consumption** 2W@24V_{DC}
- **Protocol** EtherCAT
- **Transmission Rate** 100Mbps
- **LED Indicator** PWR, RUN, Power Diagnosis LED

Power Input

- **Rated Voltage** 24V_{DC} (± 20%)
- **Dual Power Input** Supported
- **Max Current on Bus** 2A
- **Diagnosis Function** Over/under voltage for input 1&2
Over current output on bus

Digital Input

- **Channels** 4
- **Digital Input** Wet Contact
Rated voltage: 24V_{DC}
Logic level 1: 10~30 V_{DC}
and -10~-30 V_{DC}
Logic level 0: -3~3 V_{DC}
- **Input Delay** From logic level 0 to 1: 4ms
From logic level 1 to 0: 4ms
- **Digital Filter** 3ms

Protection

- **Isolation Voltage** 2,000 V_{DC}

Environment

- **Operation Temperature** -25~60°C (vertical mounted)
- **Storage Temperature** -40~85°C
- **Relative Humidity** 95% (non-condense)

Ordering Information

- **AMAX-5001** Smart Power Input Module with 4DI

Specifications

General

- **Certification** CE, FCC class A
- **Connector** Pluggable 4P push-in terminal (#24-16 AWG) and 2x RJ45
- **Enclosure** PC
- **Power Consumption** 2.5W@24V_{DC}
- **Protocol** EtherCAT
- **Transmission Rate** 100Mbps
- **LED Indicator** PWR, RUN, Power Diagnosis LED

Power Input

- **Rated Voltage** 24V_{DC} (± 20%)
- **Dual Power Input** Supported
- **Max Current on Bus** 2A
- **Diagnosis Function** Over/under voltage input 1/2
Over current output on bus

EtherCAT Coupler

- **Function** Coupling EtherCAT IO modules to 100BASE-TX EtherCAT network Ethernet/EtherCAT cable (min. Cat. 5), shielded
- **Cable** Max. 100 m (100BASE-TX)
- **Distance between stations** Max. 100 m (100BASE-TX)
- **Bus Interface** 2 x RJ45 (1 x Input, 1 x Output)

Protection

- **Isolation Voltage** 1,500 V_{DC} (LAN port)

Environment

- **Operation Temperature** -25~60°C (vertical mounted)
- **Storage Temperature** -40~85°C
- **Relative Humidity** 95% (non-condense)

Ordering Information

- **AMAX-5074** EtherCAT Coupler with ID switch

Specifications

General

- **Certification** CE, FCC class A
- **Connector** 1 x RJ45
- **Enclosure** PC
- **Power Consumption** N/A
- **Protocol** EtherCAT
- **Transmission Rate** 100Mbps
- **LED Indicator** N/A

EtherCAT Extension

- **Function** Conversion of EtherCAT to 100BASE-TX Ethernet for extension of the EtherCAT network Ethernet/EtherCAT cable (min. Cat. 5), shielded
- **Cable** Max. 100 m (100BASE-TX)
- **Distance between stations** Max. 100 m (100BASE-TX)
- **Bus Interface** 1 x RJ45
- **Power from bus** N/A

Protection

- **Isolation Voltage** 1,500 V_{DC} (LAN port)

Environment

- **Operation Temperature** -25~60°C (vertical mounted)
- **Storage Temperature** -40~85°C
- **Relative Humidity** 95% (non-condense)

Ordering Information

- **AMAX-5079** EtherCAT Extension

X-ON Electronics

Largest Supplier of Electrical and Electronic Components

Click to view similar products for [I/O Modules](#) category:

Click to view products by [Advantech](#) manufacturer:

Other Similar products are found below :

[70L-IDC5S](#) [70L-OAC-L](#) [70Z3289-4](#) [G21960000700](#) [G21960002700](#) [G34960002700](#) [OACU](#) [C4SWOUT](#) [PB16H](#) [G34960001700](#) [G3TA-OA101SZ-1](#) [DC24](#) [G77-S](#) [5607189](#) [DA5](#) [ODC-24A](#) [IDC5P](#) [FC6A-N16B1](#) [6421](#) [FC6A-N32B3](#) [70MRCQ32-HL](#) [C200H-LK201-V1](#) [G3TA-OA202SZ-US](#) [DC12](#) [GT1-OD16](#) [GT1-AD04CST](#) [B7AM-6BS](#) [70GRCQ24-HS](#) [6422](#) [84110410](#) [GT1-OD16MX](#) [G7VC-OC16-B7](#) [70MRCK24-DIN](#) [6202](#) [6402](#) [FC6A-J2C1](#) [FC6A-KC1C](#) [FC6A-R081](#) [FC6A-J8CU1](#) [GP32900003700](#) [641-480-5022](#) [PB16H](#) [84110210](#) [FRUSB1601](#) [PCL-720+-BE](#) [FRRJ451601](#) [AP24MX3DB25F](#) [ADAM-5053S-AE](#) [WISE-S614-A](#) [ADAM-5051S-AE](#) [WISE-4012-AE](#) [WISE-4060-B](#)