

AMAX-5017C

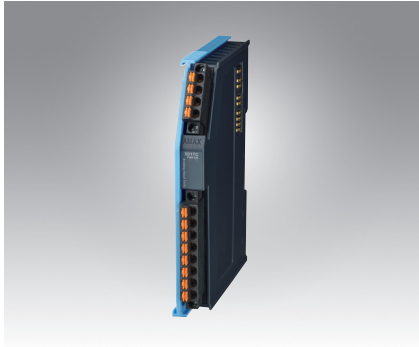
AMAX-5017V

AMAX-5017H

6-ch Current AI Module

6-ch Voltage AI Module

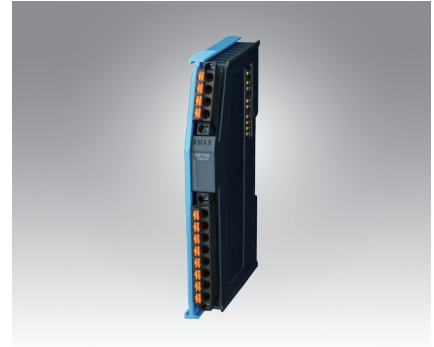
4-ch High Speed AI Module



AMAX-5017C



AMAX-5017V



AMAX-5017H



Specifications

General

- **Certification** CE, FCC class A
- **Connector** Pluggable 4P+8P push-in terminal (#24~16 AWG)
- **Enclosure** PC
- **Power Consumption** 2W@24V_{DC}
- **Protocol** EtherCAT
- **Transmission Rate** 100Mbps
- **LED Indicator** PWR, RUN

Analog Input

- **Channels** 6 (Differential)
- **Input Type** mA
- **Current Range** ±20 mA, 0 ~ 20 mA, 4 ~ 20 mA
- **Input Impedance** 120 Ω
- **Resolution** 16-bit with ±0.2% FSR accuracy @25°C
- **Sample Rate** 100 sample/s (per channel)
- **Burn-out detection** Yes

Protection

- **Isolation Voltage** 2,000 V_{DC}

Environment

- **Operation Temperature** -25~60°C (vertical mounted)
- **Storage Temperature** -40~85°C
- **Relative Humidity** 95% (non-condense)

Specifications

General

- **Certification** CE, FCC class A
- **Connector** Pluggable 4P+8P push-in terminal (#24~16 AWG)
- **Enclosure** PC
- **Power Consumption** 2W@24V_{DC}
- **Protocol** EtherCAT
- **Transmission Rate** 100Mbps
- **LED Indicator** PWR, RUN

Analog Input

- **Channels** 6 (Differential)
- **Input Type** V,mV
- **Voltage Range** ±150 mV, ±500 mV, ±1 V, ±5 V, ±10 V
- **Input Impedance** >10M Ω
- **Resolution** 16-bit with ±0.1% FSR accuracy
- **Sample Rate** 100 sample/s (per channel)

Protection

- **Isolation Voltage** 2,000 V_{DC}

Environment

- **Operation Temperature** -25~60°C (vertical mounted)
- **Storage Temperature** -40~85°C
- **Relative Humidity** 95% (non-condense)

Specifications

General

- **Certification** CE, FCC class A
- **Connector** Pluggable 4P+8P push-in terminal (#24~16 AWG)
- **Enclosure** PC
- **Power Consumption** 2.5W@24V_{DC}
- **Protocol** EtherCAT
- **Transmission Rate** 100Mbps
- **LED Indicator** PWR, RUN

Analog Input

- **Channels** 4 (Differential)
- **Input Type** V,mV
- **Voltage Range** ±10 V, 0~10V, 0~20mA
- **Input Impedance** 800 kΩ, for voltage input
500 Ω, for current input
- **Resolution** 16-bit with ±0.1% FSR accuracy for voltage input
16-bit with ±0.2% FSR accuracy for current input
- **Sample Rate** 10k sample/s (per channel)

Protection

- **Isolation Voltage** 2,000 V_{DC}

Environment

- **Operation Temperature** -25~60°C (vertical mounted)
- **Storage Temperature** -40~85°C
- **Relative Humidity** 95% (non-condense)

Ordering Information

- **AMAX-5017C** 6-ch Current AI Module

Ordering Information

- **AMAX-5017V** 6-ch Voltage AI Module

Ordering Information

- **AMAX-5017H** 4-ch High Speed AI Module

X-ON Electronics

Largest Supplier of Electrical and Electronic Components

Click to view similar products for [I/O Modules](#) category:

Click to view products by [Advantech](#) manufacturer:

Other Similar products are found below :

[70L-IDC5S](#) [70L-OAC-L](#) [70Z3289-4](#) [G21960000700](#) [G21960002700](#) [G34960002700](#) [OACU](#) [C4SWOUT](#) [PB16H](#) [G34960001700](#) [G3TA-OA101SZ-1](#) [DC24](#) [G77-S](#) [5607189](#) [DA5](#) [ODC-24A](#) [IDC5P](#) [FC6A-N16B1](#) [6421](#) [FC6A-N32B3](#) [70MRCQ32-HL](#) [C200H-LK201-V1](#) [G3TA-OA202SZ-US](#) [DC12](#) [GT1-OD16](#) [GT1-AD04CST](#) [B7AM-6BS](#) [70GRCQ24-HS](#) [6422](#) [84110410](#) [GT1-OD16MX](#) [G7VC-OC16-B7](#) [70MRCK24-DIN](#) [6202](#) [6402](#) [FC6A-J2C1](#) [FC6A-KC1C](#) [FC6A-R081](#) [FC6A-J8CU1](#) [GP32900003700](#) [641-480-5022](#) [PB16H](#) [84110210](#) [FRUSB1601](#) [PCL-720+-BE](#) [FRRJ451601](#) [AP24MX3DB25F](#) [ADAM-5053S-AE](#) [WISE-S614-A](#) [ADAM-5051S-AE](#) [WISE-4012-AE](#) [WISE-4060-B](#)