

AMAX-5015

AMAX-5018

AMAX-5024

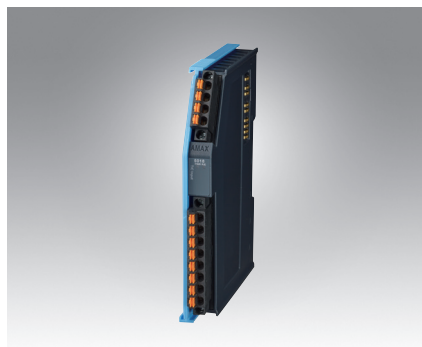
4-ch RTD Input Module

6-ch Thermocouple Input Module

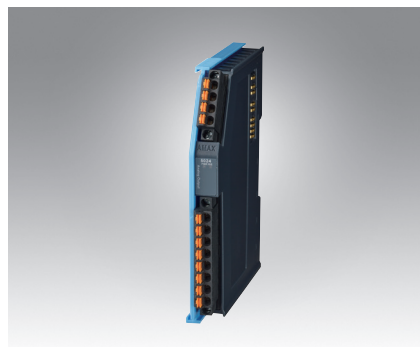
4-ch Analog Output Module



AMAX-5015



AMAX-5018



AMAX-5024



Specifications

General

- **Certification** CE, FCC class A
- **Connector** Pluggable 4P+8P push-in terminal (#24~16 AWG)
- **Enclosure** PC
- **Power Consumption** 2W@24V_{DC}
- **Protocol** EtherCAT
- **Transmission Rate** 100Mbps
- **LED Indicator** PWR, RUN

RTD Input

- **Channels** 4
- **Input Connections** 2 or 3 wire
- **Temperature Range** Pt 100 RTD: Pt -50°C to 150°C
Pt 0°C to 100°C
Pt 0°C to 200°C
Pt 0°C to 400°C
Pt -200°C to 200°C
IEC RTD 100 ohms (a = 0.00385)
JIS RTD 100 ohms (a = 0.00392)
Pt 1000 RTD
Balco 500 RTD
Ni 518 RTD
- **Resolution** 16 bit with ±0.1% FSR accuracy
- **Sample Rate** 100 sample/s (per channel)
- **Burn-out detection** Yes

Protection

- **Isolation Voltage** 2,000 V_{DC}

Environment

- **Operation Temperature** -25~60°C (vertical mounted)
- **Storage Temperature** -40~85°C
- **Relative Humidity** 95% (non-condense)

Ordering Information

- **AMAX-5015** 4-ch RTD Input Module

Specifications

General

- **Certification** CE, FCC class A
- **Connector** Pluggable 4P+8P push-in terminal (#24~16 AWG)
- **Enclosure** PC
- **Power Consumption** 2W@24V_{DC}
- **Protocol** EtherCAT
- **Transmission Rate** 100Mbps
- **LED Indicator** PWR, RUN

Thermocouple Input

- **Channels** 6 differential
- **Input Type** V, mV, Thermocouple
- **Input Impedance** >2MΩ
- **Voltage Range** ±50 mV, ±100 mV, ±500 mV, ±1 V, ±2.5 V
- **Temperature Range** Type J (0 ~ 760°C)
Type K (0 ~ 1370°C)
Type T (-100 ~ 400°C)
Type E (0 ~ 1000°C)
Type R (500 ~ 1750°C)
Type S (500 ~ 1750°C)
Type B (500 ~ 1800°C)
- **Resolution** 16-bit with ±0.1% FSR accuracy
- **Sample Rate** 100 sample/s (per channel)

Protection

- **Isolation Voltage** 2,000 V_{DC}

Environment

- **Operation Temperature** -25~60°C (vertical mounted)
- **Storage Temperature** -40~85°C
- **Relative Humidity** 95% (non-condense)

Ordering Information

- **AMAX-5018** 6-ch Thermocouple Input Module

Specifications

General

- **Certification** CE, FCC class A
- **Connector** Pluggable 4P+8P push-in terminal (#24~16 AWG)
- **Enclosure** PC
- **Power Consumption** 3.5W@24V_{DC}
- **Protocol** EtherCAT
- **Transmission Rate** 100Mbps
- **Distributed Clock** Default inactive
- **LED Indicator** PWR, RUN

Analog Output

- **Channels** 4
- **Output Type** V, mV, mA
- **Output Range** 0~5V, 0~10V, ±5V, ±10V, 4~20mA, 0~20mA
- **Resolution** 16-bit with accuracy ±0.01% FSR@25°C
- **Slew Rate** Configurable
- **Drift** ± 50 ppm/°C
- **Current Load Resistor** Max. 500 Ω
- **Voltage Load Resistor** Min. 1KΩ

Protection

- **Isolation Voltage** 2,000 V_{DC}

Environment

- **Operation Temperature** -25~60°C (vertical mounted)
- **Storage Temperature** -40~85°C
- **Relative Humidity** 95% (non-condense)

Ordering Information

- **AMAX-5024** 4-ch Analog Output Module

X-ON Electronics

Largest Supplier of Electrical and Electronic Components

Click to view similar products for [Temperature Sensor Modules](#) category:

Click to view products by [Advantech](#) manufacturer:

Other Similar products are found below :

[084Z6033](#) [084Z6039](#) [TX4L-14S](#) [084Z6041](#) [QP99](#) [CP-02](#) [CP82](#) [CP99](#) [R38-LAOO](#) [R38-LARR](#) [72-11304023-0150.0050](#) [72-11304027-0150.0050](#) [72-23304003-0150.0050.GGP](#) [72-23904001-0300.0040.TM](#) [TEM 73 A](#) [AT403-414-1000](#) [AT403-614-1000](#) [AT-503-1141-000](#) [AT-503-1161-000](#) [AT-503-6140-000](#) [AT-603-1141-000](#) [AT603-414-1000](#) [ATR121-AD](#) [ATR121-B](#) [TPMC-5](#) [TPMC-8W](#) [K39-HCRR](#) [K49-HCRR](#) [K49P-HCRR](#) [K85-HERR](#) [KR1-LCRR-D](#) [LHI968](#) [ZAD-1V2-24](#) [ZAD-ECO-V2](#) [RO](#) [E5CB-Q1P 100-240AC](#) [E5CB-Q1TC 100-240AC](#) [E5CB-Q1TCD 24AC/DC](#) [E5CB-R1PD 24AC/DC](#) [E5CSV-R1T-500 100-240AC](#) [RT-4 SONDA DS18S20](#) [RTM-02](#) [RTM-30](#) [RTM-30/S](#) [72-11301001-0300.0045.PP](#) [72-11301002-0300.0045.SS](#) [72-11301002-1000.0050.SS](#) [72-23304001-0150.0100.GGP](#) [CP82C](#) [STZ-02](#)