

# AMAX-5051

# AMAX-5056

# AMAX-5056SO

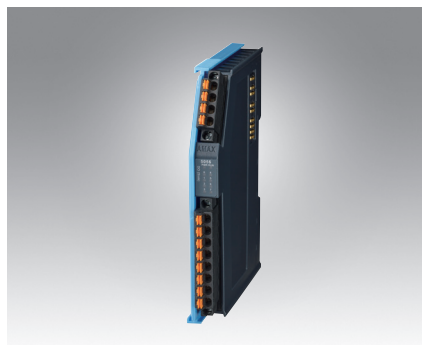
## 8-ch Digital Input Module

## 8-ch Sink-type Digital Output Module

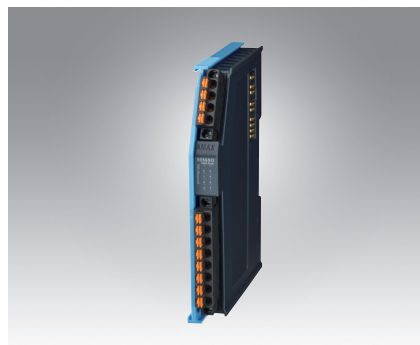
## 8-ch Source-type Digital Output Module



AMAX-5051



AMAX-5056



AMAX-5056SO



### Specifications

#### General

- **Certification** CE, FCC class A
- **Connector** Pluggable 4P+8P push-in terminal (#24-16 AWG)
- **Enclosure** PC
- **Power Consumption** 2W@24V<sub>DC</sub>
- **Protocol** EtherCAT
- **Transmission Rate** 100Mbps
- **LED Indicator** PWR, RUN, DI status

#### Digital Input

- **Channels** 8
- **Digital Input** Dry Contact  
Logic level 1: close to Iso.GND  
Logic level 0: open  
Wet Contact  
Rated voltage: 24V<sub>DC</sub>  
Logic level 1: 10-30 V<sub>DC</sub>  
and -10--30 V<sub>DC</sub>  
Logic level 0: -3~3 V<sub>DC</sub>
- **Input Delay** From logic level 0 to 1: 4ms  
From logic level 1 to 0: 4ms
- **Digital Filter** 3ms

#### Protection

- **Isolation Voltage** 2,000 V<sub>DC</sub>

#### Environment

- **Operation Temperature** -25-60°C (vertical mounted)
- **Storage Temperature** -40-85°C
- **Relative Humidity** 95% (non-condense)

### Ordering Information

- **AMAX-5051** 8-ch Digital Input Module

### Specifications

#### General

- **Certification** CE, FCC class A
- **Connector** Pluggable 4P+8P push-in terminal (#24-16 AWG)
- **Enclosure** PC
- **Power Consumption** 2W@24V<sub>DC</sub>
- **Protocol** EtherCAT
- **Transmission Rate** 100Mbps
- **Distributed Clock** Default inactive
- **LED Indicator** PWR, RUN, DO status

#### Digital Output

- **Channels** 8 (Sink Type)
- **Voltage Rating** 10-30V<sub>DC</sub>
- **Rated Current Output** 0.3A per channel at signal "1"
- **Leakage Current** 25 μA per channel at signal "0"
- **Output Delay** From logic level 0 to 1: 10μs  
From logic level 1 to 0: 100μs

#### Protection

- **Isolation Voltage** 2,000 V<sub>DC</sub>
- **Internal Flyback diode for inductive load**

#### Environment

- **Operation Temperature** -25-60°C (vertical mounted)
- **Storage Temperature** -40-85°C
- **Relative Humidity** 95% (non-condense)

### Ordering Information

- **AMAX-5056** 8-ch Sink-type Digital Output Module

### Specifications

#### General

- **Certification** CE, FCC class A
- **Connector** Pluggable 4P+8P push-in terminal (#24-16 AWG)
- **Enclosure** PC
- **Power Consumption** 2W@24V<sub>DC</sub>
- **Protocol** EtherCAT
- **Transmission Rate** 100Mbps
- **Distributed Clock** Default inactive
- **LED Indicator** PWR, RUN, DO status

#### Digital Output

- **Channels** 8 (Source Type)
- **Voltage Rating** 10-30V<sub>DC</sub>
- **Rated Current Output** 0.5A per channel at signal "1"
- **Leakage Current** 10 μA per channel at signal "0"
- **Output Delay** From logic level 0 to 1: 150μs  
From logic level 1 to 0: 2ms

#### Protection

- **Isolation Voltage** 2,000 V<sub>DC</sub>
- **Internal Flyback diode for inductive load**

#### Environment

- **Operation Temperature** -25-60°C (vertical mounted)
- **Storage Temperature** -40-85°C
- **Relative Humidity** 95% (non-condense)

### Ordering Information

- **AMAX-5056SO** 8-ch Source-type Digital Output Module

## X-ON Electronics

Largest Supplier of Electrical and Electronic Components

*Click to view similar products for [I/O Modules](#) category:*

*Click to view products by [Advantech](#) manufacturer:*

Other Similar products are found below :

[70L-IDC5S](#) [70L-OAC-L](#) [70Z3289-4](#) [G21960000700](#) [G21960002700](#) [G34960002700](#) [OACU](#) [C4SWOUT](#) [PB16H](#) [G34960001700](#) [G3TA-OA101SZ-1](#) [DC24](#) [G77-S](#) [5607189](#) [DA5](#) [ODC-24A](#) [IDC5P](#) [FC6A-N16B1](#) [6421](#) [FC6A-N32B3](#) [70MRCQ32-HL](#) [C200H-LK201-V1](#) [G3TA-OA202SZ-US](#) [DC12](#) [GT1-OD16](#) [GT1-AD04CST](#) [B7AM-6BS](#) [70GRCQ24-HS](#) [6422](#) [84110410](#) [GT1-OD16MX](#) [G7VC-OC16-B7](#) [70MRCK24-DIN](#) [6202](#) [6402](#) [FC6A-J2C1](#) [FC6A-KC1C](#) [FC6A-R081](#) [FC6A-J8CU1](#) [GP32900003700](#) [641-480-5022](#) [PB16H](#) [84110210](#) [FRUSB1601](#) [PCL-720+-BE](#) [FRRJ451601](#) [AP24MX3DB25F](#) [ADAM-5053S-AE](#) [WISE-S614-A](#) [ADAM-5051S-AE](#) [WISE-4012-AE](#) [WISE-4060-B](#)