

AMAX-5001

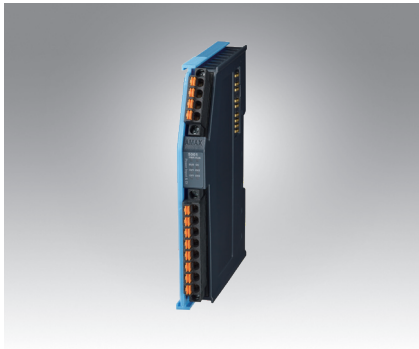
AMAX-5074

AMAX-5079

Smart Power Input Module with 4-ch DI

EtherCAT Coupler with ID Switch

EtherCAT Extension



AMAX-5001



AMAX-5074



AMAX-5079



Specifications

General

- **Certification** CE, FCC class A
- **Connector** Pluggable 4P+8P push-in terminal (#24-16 AWG)
- **Enclosure** PC
- **Power Consumption** 2W@24V_{DC}
- **Protocol** EtherCAT
- **Transmission Rate** 100Mbps
- **LED Indicator** PWR, RUN, Power Diagnosis LED

Power Input

- **Rated Voltage** 24V_{DC} (± 20%)
- **Dual Power Input** Supported
- **Max Current on Bus** 2A
- **Diagnosis Function** Over/under voltage for input 1&2
Over current output on bus

Digital Input

- **Channels** 4
- **Digital Input** Wet Contact
Rated voltage: 24V_{DC}
Logic level 1: 10~30 V_{DC}
and -10~-30 V_{DC}
Logic level 0: -3~3 V_{DC}
- **Input Delay** From logic level 0 to 1: 4ms
From logic level 1 to 0: 4ms
- **Digital Filter** 3ms

Protection

- **Isolation Voltage** 2,000 V_{DC}

Environment

- **Operation Temperature** -25~60°C (vertical mounted)
- **Storage Temperature** -40~85°C
- **Relative Humidity** 95% (non-condense)

Ordering Information

- **AMAX-5001** Smart Power Input Module with 4DI

Specifications

General

- **Certification** CE, FCC class A
- **Connector** Pluggable 4P push-in terminal (#24-16 AWG) and 2x RJ45
- **Enclosure** PC
- **Power Consumption** 2.5W@24V_{DC}
- **Protocol** EtherCAT
- **Transmission Rate** 100Mbps
- **LED Indicator** PWR, RUN, Power Diagnosis LED

Power Input

- **Rated Voltage** 24V_{DC} (± 20%)
- **Dual Power Input** Supported
- **Max Current on Bus** 2A
- **Diagnosis Function** Over/under voltage input 1/2
Over current output on bus

EtherCAT Coupler

- **Function** Coupling EtherCAT IO modules to 100BASE-TX EtherCAT network Ethernet/EtherCAT cable (min. Cat. 5), shielded
- **Cable** Max. 100 m (100BASE-TX)
- **Distance between stations** Max. 100 m (100BASE-TX)
- **Bus Interface** 2 x RJ45 (1 x Input, 1 x Output)

Protection

- **Isolation Voltage** 1,500 V_{DC} (LAN port)

Environment

- **Operation Temperature** -25~60°C (vertical mounted)
- **Storage Temperature** -40~85°C
- **Relative Humidity** 95% (non-condense)

Ordering Information

- **AMAX-5074** EtherCAT Coupler with ID switch

Specifications

General

- **Certification** CE, FCC class A
- **Connector** 1 x RJ45
- **Enclosure** PC
- **Power Consumption** N/A
- **Protocol** EtherCAT
- **Transmission Rate** 100Mbps
- **LED Indicator** N/A

EtherCAT Extension

- **Function** Conversion of EtherCAT to 100BASE-TX Ethernet for extension of the EtherCAT network Ethernet/EtherCAT cable (min. Cat. 5), shielded
- **Cable** Max. 100 m (100BASE-TX)
- **Distance between stations** Max. 100 m (100BASE-TX)
- **Bus Interface** 1 x RJ45
- **Power from bus** N/A

Protection

- **Isolation Voltage** 1,500 V_{DC} (LAN port)

Environment

- **Operation Temperature** -25~60°C (vertical mounted)
- **Storage Temperature** -40~85°C
- **Relative Humidity** 95% (non-condense)

Ordering Information

- **AMAX-5079** EtherCAT Extension

X-ON Electronics

Largest Supplier of Electrical and Electronic Components

Click to view similar products for [Ethernet Modules](#) category:

Click to view products by [Advantech](#) manufacturer:

Other Similar products are found below :

[TDKEZW3](#) [V23993-USB1029A](#) [100-POE4](#) [X520QDA1](#) [BCM84794A1KFSBG](#) [X520DA2OCP](#) [808-38157](#) [7506GX2](#) [TC EXTENDER 2001](#)
[ETH-2S](#) [105FX-SC-MDR](#) [110FX2-SC](#) [7000-P3201-P050150](#) [750-451](#) [750-494](#) [750-495](#) [750-501](#) [750-612](#) [750-627](#) [750-643](#) [750-652](#) [750-](#)
[653/003-000](#) [753-440](#) [753-540](#) [852-1812](#) [852-1813](#) [852-1816](#) [LANTICK PE-0-16](#) [LANTICK PE-16-0](#) [RBMTXLITE-L4X2.X.X.X.X.](#) [EKI-](#)
[7708E-4F-AE](#) [EKI-7708E-4FP-AE](#) [EKI-7708G-4FP-AE](#) [2352903-2](#) [EKI-2706G-1GFPI-BE](#) [SW-125](#) [7000-74712-4780030](#) [7000-74712-](#)
[4780060](#) [7000-74712-4780100](#) [7000-74712-4780150](#) [750-331](#) [753-649](#) [852-1200](#) [852-1210](#) [852-1280](#) [PM02TWA](#) [ICR-1601G](#) [BOXER-](#)
[6641-A1-1110](#) [EKI-7712G-4F-AE](#) [55150](#) [56005](#)