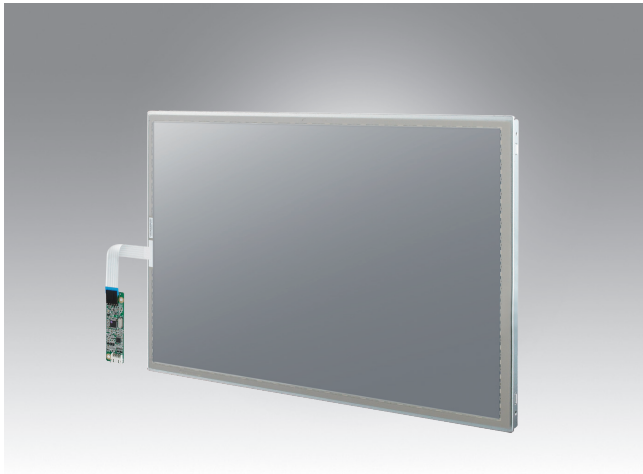


IDK-1121W

21.5" FHD Industrial Display kit with Touch Solution



Features

- 21.5" LCD supports 1920 x 1080 pixels and wide operating temperature (0 ~ 60° C)
- Brightness of 300 cd/m² with LED backlight
- 5-wire resistive touch solution
- High contrast ratio of 5000:1
- High uniformity of 80%
- LVDS signal interface
- Low power consumption 19.8 W (panel only)
- LED driver board built in
- Touch controller included (USB)
- AR surface treatment (optional)
- Optical bonding (optional)

Introduction

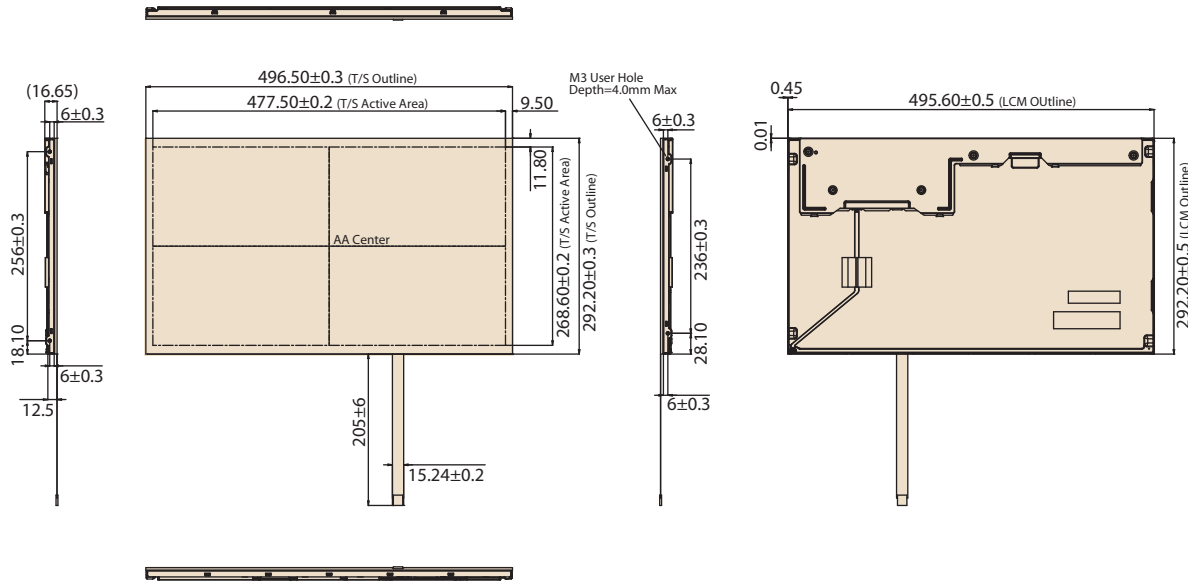
The Advantech IDK-1121W series comes with a 21.5" industrial grade LCD display with 5-wire resistive touch. The series is also available with flexible options for LCD screen enhancements such as Anti Reflection surface treatment and optical bonding solution. IDK-1121W series supports 5-wire resistive touch with a low power consumption of 19.8 W. IDK-1121W series is ideal for embedded applications which need maximum mechanical design flexibility.

Specifications

LCD Panel	Display Size	21.5" LED backlight panel
	Resolution	1920 x 1080
	Viewing Angle (U/D/L/R)	89° / 89° / 89° / 89°
	Brightness	300 cd/m ²
	Backlight Life (hrs)	50,000 hrs
	Contrast Ratio	5000 : 1
	Response Time (ms)	25 ms
	Colors	8bit (16.7 M)
	LCD Voltage	5V
	LED Driver Voltage	12V
	Consumption	19.8 W
	Signal Interface	2 channel LVDS
	Weight	2300g max.
	Dimensions (W x H x D)	495.6 x 292.2 x 12.7 mm
Touch Screen	Touch Screen	5-wire Resistive
	Transparency	80 ± 3%
	Surface Hardness	3H
	Durability	10 million times
Environment	Operating Temperature	0 ~ 60° C
	Storage Temperature	-20 ~ 60° C

Dimensions

Unit: mm



Ordering Information

Part No.	Size	Brightness (cd/m2)	Interface	Touch screen	Touch Interface
IDK-1121WR-30FHA1E	21.5"	300	LVDS	5-wire Resistive	RS-232/USB

Packing List

Part Number	Description
ETM-RES04C-EEH4EE	1 x 5-wire Touch controller
1700020324-01	1 x USB Touch cable 5P-2.0/USB-A (M) 180CM

Note: Package contents are subject to change without prior notice

Optional Order

SBC Part No.	LVDS Cable Part No.	Display Interface	B/L Cable Part No	Touch Interface	Touch Power Input
MIO-5270	96CB-L3040PAF5	LVDS: Dual channel 24bit	96CB-E0905PAE3	USB	5V
AIMB-270	96CB-L3040PAF5	LVDS: Dual channel 24bit	96CB-E0905PAE3	USB	5V

For more compatible embedded board solutions, please visit our Build Your Display web page:
<http://www.advantech.com/buildyourdisplay>

X-ON Electronics

Largest Supplier of Electrical and Electronic Components

Click to view similar products for [Display Modules](#) category:

Click to view products by [Advantech](#) manufacturer:

Other Similar products are found below :

[P6153-PR](#) [TDP0700T800480PCAP](#) [P6171DPR-DC-RS](#) [P6171DPR-DC-U](#) [MIKROMEDIA 4 FOR STM32F4 CAPACITIVE FPI](#)
[MIKROMEDIA 3 FOR STM32F4 CAPACITIVE FPI](#) [TN0216ANVNANN-GN00](#) [TN0104ANVAANN-GN00](#) [TN0181ANVNANN-GN00](#)
[MIKROMEDIA 5 FOR TIVA CAPACITIVE](#) [MIKROMEDIA 4 FOR TIVA CAPACITIVE](#) [MIKROMEDIA 4 FOR PIC32MZ CAPACITIVE](#)
[RVT43ULFNWC03 V4](#) [SM-RVT101HVBFWCA0](#) [SM-RVT101HVBNWCA0](#) [SM-RVT35HHBFWCA0](#) [SM-RVT35HHBNWCA0](#) [SM-](#)
[RVT43HLBFWCA0](#) [SM-RVT43HLBNWCA0](#) [SM-RVT50HQBNWCA0](#) [SM-RVT70HSBFWCA0](#) [SM-RVT70HSBNWCA0](#) [PIM579](#)
[1215686](#) [PIM543](#) [DFR0678](#) [P6191PR-DC-U-V3](#) [16381](#) [17916](#) [18205](#) [21229](#) [18625](#) [12885](#) [19885](#) [11769](#) [MIKROMEDIA FOR DSPIC33](#)
[MIKROMEDIA FOR PIC24](#) [MIKROMEDIA FOR PIC32](#) [MIKROMEDIA FOR STELLARIS M3](#) [MIKROMEDIA HMI 3.5 RES](#)
[MIKROMEDIA HMI 5](#) [MIKROMEDIA PLUS FOR FT90X](#) [MIKROMEDIA PLUS FOR PIC32MX7 SHIELD](#) [MIKROMEDIA PROTO](#)
[SHIELD](#) [14628](#) [MIKROMEDIA 5 FOR TIVA](#) [MIKROMEDIA 5 FOR TIVA SHIELD](#) [MIKROMEDIA 7 FOR STM32F4](#) [MIKROMEDIA](#)
[CONNECT SHIELD](#) [MIKROMEDIA FOR ARM](#)