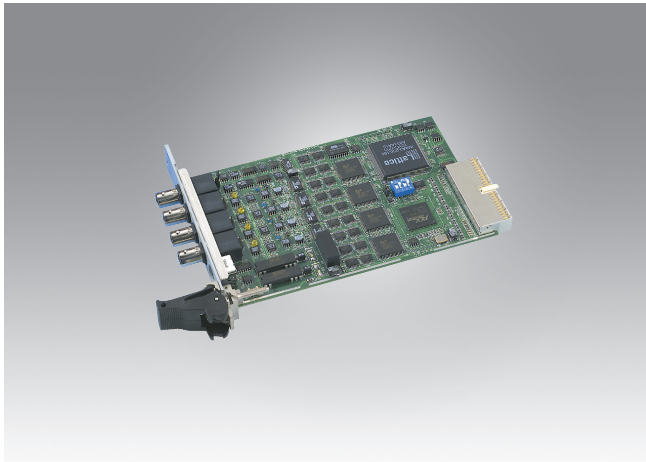


MIC-3714

MIC-3716

30 MS/s, 12-bit, Simultaneous 4-ch
Analog Input 3U CompactPCI® Card

250 kS/s, 16-bit, 16-ch Multifunction
3U CompactPCI® Card



MIC-3714/3

CE FCC

Specifications

Analog Input

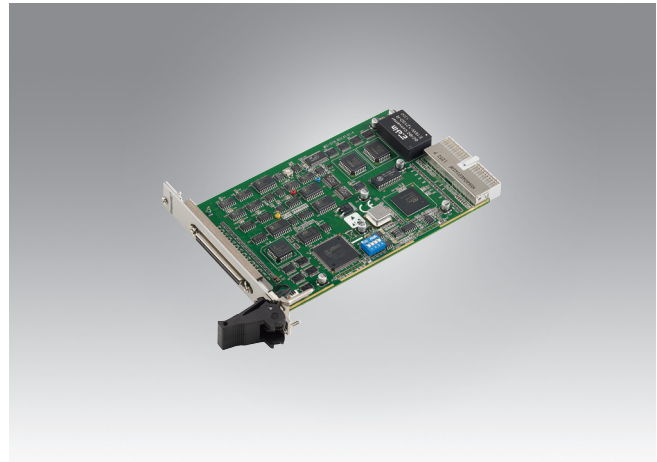
- **Channels** 4 single-ended channels
- **Resolution** 12 bits
- **Max. Sampling Rate** 30 MS/s (Only in FIFO 32k)
- **FIFO Size** 32,768 samples/ch
- **Overvoltage Protection** 30 Vp-p
- **Input Impedance** 50 Ω/1 MΩ/jumper selectable, 100 pF
- **Sampling Modes** Software, pacer, post-trigger, pre-trigger, delay-trigger, about-trigger
- **Input Range (V)** ±5, ±2.5, ±1, ±0.5

General

- **Bus Type** CompactPCI
- **I/O Connectors** 4 x BNC connector (for AI)
1 x PS/2 connector (for ext. colock and trigger)
- **Dimensions (L x H)** 160 x 100 mm (6.3" x 3.9") with 3U bracket
- **Power Consumption** Typical: +3.3 V @ 550 mA, +5 V @ 150 mA,
+12 V @ 600 mA
Max.: +3.3 V @ 850 mA, +5 V @ 200 mA,
+12 V @ 700 mA
- **Operating Temperature** 0 ~ 70 °C (32~158 °F)
- **Storage Temperature** -20 ~ 85 °C (-4 ~ 185 °F)
- **Storage Humidity** 5 ~ 95% RH, non-condensing (refer to IEC 68-2-3)
- **Certification** CE, FCC

Ordering Information

- **MIC-3714/3-AE** 3U, 30 MS/s Simultaneous 4-ch Analog Input Card
- **ADAM-3909-AE** DB-9 Wiring Terminal for DIN-rail Mounting
- **PCL-10901-3E** PS2 to DB-9 wiring cable, 3 m
- **PCL-1010B-1E** BNC to BNC wiring cable, 1 m



MIC-3716/3

CE

Specifications

Analog Input

- **Channels** 16 single-ended, 8 differential, or combination
- **Resolution** 16 bits
- **Max. Sampling Rate** 250 kS/s
- **FIFO Size** 1024 samples/ch
- **Overvoltage Protection** 30 Vp-p
- **Input Impedance** 100 MΩ/10 pF (Off); 100 MΩ/100 pF (On)
- **Sampling Modes** Software, pacer, or external
- **Input Range**

Bipolar	±10	±5	±2.5	±1.25	±0.625
Unipolar	-	0 - 10	0 - 5	0 - 2.5	0 - 1.25
Accuracy (% of FSR ±1LSB)	0.15	0.03	0.03	0.05	0.1

Analog Output

- **Channels** 2
- **Resolution** 16 bits
- **Output Rate** Static update
- **Output Range**

Internal Reference	Bipolar	±5, ±10
	Unipolar	0 - 5, 0 - 10
External Reference	0 - +x V @ +x V (-10 ≤ x ≤ 10) -x - +x V @ +x V (-10 ≤ x ≤ 10)	

- **Slew Rate** 20 V/μs
- **Driving Capability** ±20 mA
- **Output Impedance** 0.1 Ω max.
- **Operation Mode** Single output
- **Accuracy** Relative: ±1LSB

Digital Input/Output

- **Channels** 16, 5V/TTL
- **Input Voltage** Logic 0: 0.4 V max.
Logic 1: 2.4 V min.
- **Output Voltage** Logic 0: 0.4 V max.
Logic 1: 2.7 V min.
- **Output Capability** Sink: 0.4 V max. @ +8 mA
Source: 2.4 V min. @ -0.4 mA
- **Counter/Timer**
- **Channels** 3
- **Compatibility** 5 V/TTL
- **Resolution** 16 bits
- **Max. Input Frequency** 1 MHz
- **Reference Clock** Internal 10 MHz
External Clock Frequency 10 MHz
External Voltage Range TTL (Low: 0.8, High: 2 V)

General

- **PICMG Compliance** CompactPCI V2.0, R 2.1 Hot-Swap V2.1, R 2.0
- **Bus Type** CompactPCI
- **I/O Connector Type** 68-pin SCSI-II female
- **Dimensions (L x H)** 160 x 100 mm (6.9" x 3.9") with 3U Bracket
- **Power Consumption** Typical: +5 V @ 850 mA, +12 V @ 600 mA
Max.: +5 V @ 1 A, +12 V @ 700 mA
- **Certification** CE

Ordering Information

- **MIC-3716/3-AE** 3U, 250 kS/s, 16-bit, 16-ch High-Resolution Multifunction Card
- **PCLD-8710-AE** Industrial Wiring Terminal Board with CJC circuit for DIN-rail Mounting, (cable not included)
- **PCL-10168-1E/2E** 68-pin SCSI-II cable with male connectors on both ends and special shielding for noise reduction, 1 and 2 m
- **ADAM-3968-AE** 68-pin SCSI-II Wiring Terminal Board for DIN-rail Mounting

X-ON Electronics

Largest Supplier of Electrical and Electronic Components

Click to view similar products for [Data Logging & Acquisition](#) category:

Click to view products by [Advantech](#) manufacturer:

Other Similar products are found below :

[PCI-6208A](#) [DAQe-2502](#) [PXI-2208](#) [ACL-8112DG](#) [SpotBotBLE](#) [MCM-204](#) [USB-4711A-BE](#) [ACL-7130](#) [LPCI-7230](#) [PXES-2780](#) [Rack-Mount kit](#) [USB-4761-BE](#) [SE028](#) [PCI-1761-BE](#) [PCI-1711UL-CE](#) [USB-4702-AE](#) [USB-4704-AE](#) [USB-4716-AE](#) [USB-4750-BE](#) [USB-4751-AE](#) [USB-4751L-AE](#) [PCI-1710UL-DE](#) [PCI-1710U-DE](#) [PCI-1710HGU-DE](#) [AR207/8/S1/PPPP/IP30](#) [U2781A](#) [4610](#) [AR407/S1/P/P/P/P](#) [AR207/8/S2/PPPP/IP30](#) [ACL-8112PG](#) [cPCI-7248](#) [cPCI-7433](#) [DAQ-2213](#) [DAQe-2205](#) [ND-6053](#) [ND-6060](#) [PCI-7230](#) [PCI-7432](#) [PCI-7442](#) [PCI-9112](#) [PCI-9112A](#) [PCI-9113A](#) [PCI-9221](#) [PCM-7248+](#) [USB-1903](#) [USB-2401](#) [PCIE-1813-AE](#) [USB-5860-AE](#) [USB-5862-AE](#) [AR654/S1/P/P/P/P/IP30](#) [AR654/S2/P/P/P/P/IP30](#)