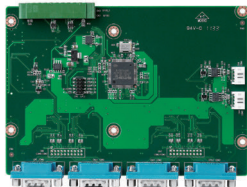


# MI/O Extension Modules

## MI0e-210

4 x RS232/422/485,  
2 x RS422/485, 8-bit GPIO



CE FCC

### Specifications

General	
Bus Interface	MI0e LPC
Ports	4 x RS232/422/485, 2 x RS422/485
GPIO	8-bit with 3.3V level
Communications	
Data Bits	5, 6, 7, 8
Data Signals	RS-422: TxD+, TxD-, RxD+, RxD- RS-485: DATA+, DATA- RS-232: TxD, RxD, RTS, CTS, DTR, DSR, DCD, RI, GND
IRQ	Depends on MI/O CPU Board
Parity	even, odd, sticky or no
Speed	50 to 115.2k Baud
Stop Bits	1, 1.5, 2
Protection	
EFT Protection	Air gap ±15kV, contact ±8kV
Compatibility	
Rear I/O	MI/O-Compact
Mechanical	MI/O-Compact
Function	MI/O-Compact*, MI/O-Ultra*
Environment	
Dimensions (L x W)	146 x 102 mm (5.7" x 4")
Weight	0.186 kg (0.41 lb)
Operating Humidity	0 - 90 % relative humidity, non-condensing
Operating Temperature	0 - 60° C (32 - 140° F)
Storage Temperature	-40° C - 85° C and 60° C @ 95% RH Non-Condensing
Power	
Power Supply Voltage	Supported by MI/O Extension SBC

\* Requires customized BIOS for MI/O CPU board support.

### Ordering Information

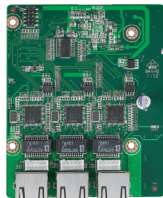
P/N	Description
MI0e-210-D6A1E	4 x RS232/422/485, 2 x RS422/485, 8-bit GPIO

### Accessories

Part No.	Description	Quantity
1703040157	RS-422/485 W/D-SUB COM 4P 15 cm	2

## MI0e-220

3 x Intel® Gigabit Ethernet



CE FCC

### Specifications

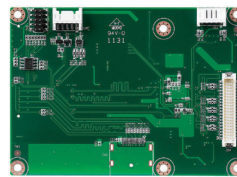
General	
Bus Interface	MI0e PCI Express
Chipset	Intel® 82583V Gigabit Ethernet Controller
PCIe Switch	PLX PEX8605
Port	3 x RJ45
Speed	10/100/1000 Mbps
Compatibility	
Rear I/O	MI/O-Compact
Mechanical	MI/O-Compact
Function	MI/O-Compact, MI/O-Ultra
Mechanical and Environmental	
Dimensions (L x W)	102 x 83 mm (4" x 3.2")
Weight	0.182 kg (0.401 lb)
Operating Temperature	Standard operating: 0 - 60° C (32 - 140° F)
Operating Humidity	0% - 90% relative humidity, non-condensing
Storage Temperature	-40° C - 85° C and 60° C @ 95% RH Non-Condensing
Power	
Power Supply Voltage	Supported by MI/O Extension SBC

### Ordering Information

P/N	Description
MI0e-220-L3A1E	3 x Intel® Gigabit Ethernet without PCIe Switch
MI0e-220-B3A1E	3 x Intel® Gigabit Ethernet with PCIe Switch (for MIO-5250 /MIO-5251/ MIO-5271)

## MI0e-230

48-bit LVDS or DisplayPort<sup>1</sup>,  
2 x USB 2.0



CE FCC

### Specifications

General	
Bus Interface	MI0e Displayport & USB 2.0
Controller	Chrontel CH7511
Brightness Control	Supported
USB	2 x USB 2.0
Compatibility	
Rear I/O	MI/O-Ultra
Mechanical	MI/O-Compact, MI/O-Ultra
Function	MI/O-Compact <sup>2</sup> , MI/O-Ultra <sup>2</sup>
Mechanical and Environmental	
Dimensions (L x W)	100 x 72 mm (3.9" x 2.8")
Weight	0.084 kg (0.185 lb)
Operating Temperature	0 - 60° C (32 - 140° F)
Operating Humidity	0% - 90% relative humidity, non-condensing
Power	
Power Supply Voltage	Supported by MI/O Extension SBC

<sup>1</sup> Support by request

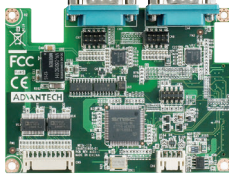
<sup>2</sup> Requires customized BIOS or HW adjustment for MI/O CPU board support.

### Ordering Information

P/N	Description
MI0e-230-L0A1E	48-bit LVDS or DisplayPort, 2 x USB 2.0

## MIOe-110

2 x RS-232, 2 x RS-232/422/485 (with power and isolation), 2 x USB 2.0



CE FCC

### Specifications

<b>General</b>	
Bus Interface	MIOe LPC/USB
Super I/O	SCH3106
<b>Rear I/O</b>	
COM port	COM1/2: Both at coastline and internal box water, simultaneously COM1: RS-232/422/485 (With isolation, RS-485 with auto flow control). COM2: RS-232/422/485 (Supports wake on ring. Supply 5V/12V power selected by jumper. RS-485 with auto flow control).
<b>Internal I/O</b>	
COM port	COM3/4: RS-232 (Support wake on ring)
USB 2.0	2
<b>Communications</b>	
Data Bits	5, 6, 7, 8
Data Signals	RS-422: TxD+, TxD-, RxD+, RxD- RS-485: DATA+, DATA- RS-232: TxD, RxD, RTS, CTS, DTR, DSR, DCD, RI, GND
IRQ	Depends on MI/O CPU Board
Parity	even, odd, sticky or no
Speed	50 to 115.2k Baud
Stop Bits	1, 1.5, 2
<b>Protection</b>	
ESD	Air gap ±15kV and contact +8kV for all COM ports
Isolation	2.5kV for COM1
<b>Compatibility</b>	
Rear I/O	MI/O-Ultra
Mechanical	MI/O-Ultra
Function	MI/O-Compact*, MI/O-Ultra*
<b>Environment</b>	
Dimensions	100 x 72 mm (3.9" x 2.8")
Weight	0.04 kg (0.09lb), only for board
Operational Temperature	0 ~ 60° C (32 ~ 140° F)
Operational Humidity	40° C @ 95% RH Non-Condensing
Storage Environment	-40° C ~ 85° C and 60° C @ 95% RH Non-Condensing
<b>Power</b>	
Power Supply Voltage	Supported by MI/O Extension SBC

\* Requires customized BIOS for MI/O CPU board support

### Ordering Information

P/N	Description
MIOe-110F-00A1E	2 x RS-232/422/485, 2 x RS-232, w/ isolation, 2 x USB
MIOe-110L-00A1E	1 x RS-232/422/485, 2 x RS-232, w/o isolation, 2 x USB

### Accessories

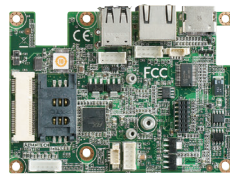
P/N	Description	Quantity
1700018999	COM3/4 cable 22cm	1

### Optional Accessories

P/N	Description
1700019414	COM1/2 internal cable 30cm
1700019071	2 ports USB cable w/o bracket, 12cm

## MIOe-120

2 x GbE, HDMI, Mini PCIe, SIM holder, speaker out, LPC, 2 x USB 2.0



CE FCC

### Specifications

<b>General</b>	
Bus Interface	MIOe PCI Express/ USB/ LPC/ Audio line-out
Ethernet controller	GbE Intel® 82583V
PCIe Switch	PLX PEX8605
USB Hub Controller	Terminus FE1.1 USB 2.0 4-port hub
<b>Rear I/O</b>	
GbE	1 (10/100/1000 Mbps), both at coastline and internal box water, simultaneously
USB 2.0	2 (Both at coastline and internal box water, simultaneously)
HDMI	1 (by request, only for MIO-2261)
<b>Internal I/O</b>	
GbE	1 (10/100/1000 Mbps)
Speaker out	1 with amplifier (Max 2.2W/ch stereo into a 3Ω load )
LPC	1 (support extra four COM ports by PCA-COM232-00A1E or PCA-COM485-00A1E, TPM module by PCA-TPM-00A1E)
<b>Expansion</b>	
Mini PCIe	1 (full size, with SIM holder, including of USB interface)
<b>Compatibility</b>	
Rear I/O	MI/O-Ultra
Mechanical	MI/O-Compact, MI/O-Ultra
Function	MI/O-Compact*, MI/O-Ultra*
<b>Mechanical and Environmental</b>	
Dimensions (L x W)	100 x 72 mm (3.9" x 2.8")
Weight	0.04 kg (0.09lb), only for board
Operational Temperature	Standard operating: 0 ~ 60° C (32 ~ 140° F)
Operational Humidity	40° C @ 95% RH Non-Condensing
Storage Temperature	-40° C ~ 85° C and 60° C @ 95% RH Non-Condensing
<b>Power</b>	
Power Supply Voltage	Supported by MI/O Extension SBC

- \* 1. HDMI: Only for MIO-2261, supported by request
- 2. LPC: Supported by OEM BIOS for PCA-COM232-00A1E, PCA-COM485-00A1E, and PCA-TPM-00A1E
- 3. MIO-5250 doesn't support MIOe-120L

### Ordering Information

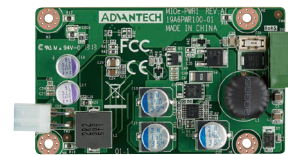
P/N	Description
MIOe-120F-00A1E	2 x GbE w/ PCIe switch, 2 x USB, Mini PCIe, SIM holder, speaker-out with amplifier, LPC
MIOe-120L-00A1E	1 x GbE w/o PCIe switch, 2 x USB, Mini PCIe, SIM holder, speaker-out with amplifier, LPC

### Optional Accessories

P/N	Description
1700019001	1 x LAN cable, 15cm
1700019071	2 ports USB cable w/o bracket, 12cm
PCA-COM232-00A1E	4 x RS-232 extension module, 31.5x48mm
PCA-COM485-00A1E	4 x RS-422/485 extension module, 31.5x48mm
PCA-TPM-00A1E	TPM module, 31.5 x 48 mm

## MIOe-PWR1

12-24V DC to DC Power Module MI/O-Chassis compliant



UL CB CE FCC

### Specifications

<b>General</b>	
Input Voltage	12 to 24 V <sub>DC</sub> ±5%
Output Voltage	12V ±10%
Output Current	Max. 5A
Protection	OVP, OCP, Anti-reverse
Connector type	Input: Phoenix 2pin Output: ATX 2x2pin
<b>Mechanical and Environmental</b>	
Dimensions (L x W)	90 x 53 mm (3.5" x 2.1")
Operating Temperature	0 ~ 60° C (32 ~ 140° F)
Weight	0.084 kg (0.185 lb)
Operating Humidity	0% ~ 90% relative humidity, non-condensing

### Ordering Information

P/N	Description
MIOe-PWR1-00A1E	12-24V DC to DC power module
MIOe-PWR1Z-00A1E	12-24V DC power module -20 ~ 80° C

### Accessories

Part No.	Description
1700021072-01	Power cable 2*2P-4.2/2*2P-4.2, 10cm

## X-ON Electronics

Largest Supplier of Electrical and Electronic Components

*Click to view similar products for [Ethernet Modules](#) category:*

*Click to view products by [Advantech](#) manufacturer:*

Other Similar products are found below :

[TDKEZW3](#) [V23993-USB1029A](#) [100-POE4](#) [I210T1BLK](#) [X520QDA1](#) [BCM84794A1KFSBG](#) [X520DA2OCP](#) [808-38157](#) [7506GX2](#) [TC](#)  
[EXTENDER 2001 ETH-2S](#) [105FX-SC-MDR](#) [110FX2-SC](#) [BCM54291B0IQLEG](#) [7000-P3201-P050150](#) [750-1415](#) [750-494](#) [750-495](#) [750-612](#)  
[750-613](#) [750-627](#) [750-643](#) [750-940](#) [753-440](#) [753-540](#) [753-650/003-000](#) [852-1322](#) [852-1328](#) [852-1812](#) [852-1813](#) [852-1816](#) [LANTICK PE-](#)  
[0-16](#) [LANTICK PE-16-0](#) [RBMTXLITE-L4X2.X.X.X.X.](#) [USR-TCP232-T2](#) [2017008](#) [EKI-7708E-4F-AE](#) [EKI-7708E-4FP-AE](#) [EKI-7708G-](#)  
[4FP-AE](#) [2352903-2](#) [753-620](#) [EGU-0702-SFP-T](#) [SW-125](#) [SW-525](#) [SW-725](#) [750-331](#) [1005957](#) [1006191](#) [304TX-N](#) [WIZ107SR\\_TTL](#) [ES-320](#)