

# Extension Modules for Slot SBCs



## PCA-AUDIO-00A1E

- 5.1 Channel AC'97 Audio Extension Module
- Line-in, Mic-in, Aux-in, Line-out, Speaker-out, CD-in and Buzzer-in from CPU card
- Dimensions: 44.05 x 94 mm



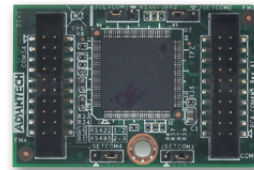
## PCA-AUDIO-HDA1E

- 7.1 Channel HD Audio Extension Module
- Line-in, Mic-in, Lin-out, Front-out, Speaker-out, Rear-out, Subcen-out, Side-out
- Dimensions: 47.5 x 80.74 mm



## PCA-COM232-00A1E

- 4 RS-232 series ports extension module by LPC connector on CPU card.
- Dimensions: 31.5 x 48 mm



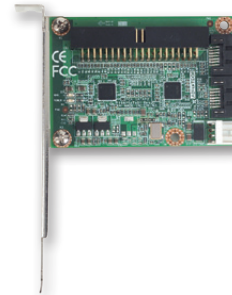
## PCA-COM485-00A1E

- 4 RS-422/485 series ports extension module by LPC connector on CPU card.
- With Auto-flow control function
- Dimensions: 31.5 x 48 mm



## PCA-SATAP1-00A1E

- 1 IDE to 1 SATA adapter board with bracket
- 1 EIDE (ATA100/66/33)
- 1 port SATA (300MB/s)
- Dimensions: 47.5 x 80.74 mm



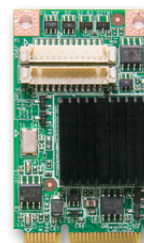
## PCA-SATAP2-00A1E

- 1 IDE to 2 SATAs adapter board with bracket
- 1 EIDE (ATA100/66/33)
- 2 ports SATA (300MB/s)
- Dimensions: 47.5 x 80.74 mm



## PCA-CFP1-00A1E

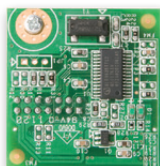
- IDE to CF adapter board with bracket
- 1 EIDE (ATA100/66/33)
- 1 CF socket
- Dimensions: 64.3 x 67.3 mm



## PCA-5650-00A1E

- 2 VGA output Mini PCI Express Graphic card
- GPU: Silicon Motion SM750
- VGA output: 1920 x 1080, up to 75Hz vertical rate
- 16 Mb of embedded DDR memory

NEW



## PCA-TPM-00A1E

- Trusted platform module compliant with TCG 1.2 specification and TCG software stack 1.2 via LPC connector on CPU card.
- Hardware based data protection solution for storage device encryption and decryption.
- Dimension: 31.5 x 30.5 mm

Preliminary



## IPMI-1000-00A1E

- IPMI2.0 Server-grade remote control solution
- OS independent hardware-based solution
- Real-time and centralized management
- KVM over IP remote control function
- User friendly UI and utility
- Support Model: PCE-5126WG2, PCE-7127

## X-ON Electronics

Largest Supplier of Electrical and Electronic Components

*Click to view similar products for [Interface Modules](#) category:*

*Click to view products by [Advantech](#) manufacturer:*

Other Similar products are found below :

[IFD8520](#) [cPCI-3544](#) [422CON](#) [ATX6022/14GP7](#) [ATX6022/8](#) [AX93221-24/48](#) [FC6A-EXM2](#) [OPT8AP-AE](#) [96RMKVM-19V1C-A](#) [60016-011](#) [60016-014](#) [60006-008](#) [60011-075](#) [HPCI-14S12U](#) [cBP-3208](#) [cBP-3062A](#) [FAB205-6P5](#) [ATX6022/6](#) [60016-012](#) [96RMKVM-17V1C-A](#) [MOS-1120Y-0201E](#) [96RMLCD-17V1-A](#) [96RMKVM-17V8C-A](#) [60004-005](#) [60016-017](#) [60006-009](#) [60016-035](#) [60016-034](#) [60016-031](#) [60016-030](#) [60016-026](#) [60016-024](#) [60016-018](#) [60016-007](#) [60016-005](#) [60007-002](#) [60006-010](#) [AXX10GBTWLHW3](#) [382-BBEH](#) [555-BDCL](#) [K6CMISZBI52](#) [426451401-3](#) [60011-093](#) [MIC-3620/3-BE](#) [MPCIE-UART-KIT02-R20](#) [RSM232](#) [PCIE-1680-AE](#) [BB-FOSTCDRI](#) [73-544-002](#) [UC-313](#)