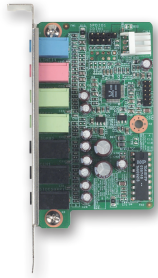
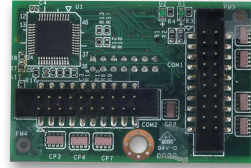


Extension Modules for Slot SBCs



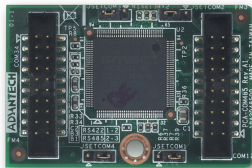
PCA-AUDIO-HDA1E

- 7.1 Channel HD Audio Extension Module
- Line-in, Mic-in, Lin-out, Front-out, Speaker-out, Rear-out, Subcen-out, Side-out
- Dimensions (L x H) : 47.5 x 80.74 mm (1.87" x 3.17")



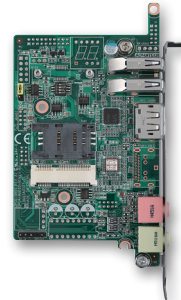
PCA-COM232-00A1E

- 4 RS-232 series ports extension module by LPC connector on CPU card.
- Dimensions (L x H) : 31.5 x 48 mm (1.24" x 1.88")



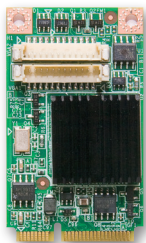
PCA-COM485-00A1E

- 4 RS-422/485 series ports extension module by LPC connector on CPU card.
- With Auto-flow control function
- Dimensions (L x H) : 31.5 x 48 mm (1.24" x 1.88")



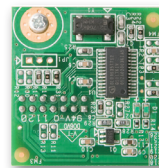
PCE-SA01-00A1E

- I/O extension stack board
- 1 DP, 2 USB 3.0, MIC-in, LINE-out
- Dimensions (L x H) : 68 x 125 mm (2.67" x 4.92")
- Supports Model: PCE-3029, PCE-4128, PCE-4129



PCA-5650-00A1E

- 2 VGA output Mini PCI Express Graphic card
- GPU: Silicon Motion SM750
- VGA output: 1920 x 1080, up to 75Hz vertical rate
- 16 Mb of embedded DDR memory



PCA-TPM-00A1E

- Trusted platform module compliant with TCG 1.2 specification and TCG software stack 1.2 via LPC connector on CPU card
- Hardware based data protection solution for storage device encryption and decryption
- Dimensions (L x H) : 31.5 x 30.5 mm (1.24" x 1.2")



IPMI-1000-00A1E

- IPMI2.0 Server-grade remote control solution
- OS independent hardware-based solution
- Real-time and centralized management
- KVM over IP remote control function
- User friendly UI and utility
- Supports Model: PCE-5126WG2, PCE-7127, PCE-5128



PCA-TPM-00B1E

- Trusted platform module compliant with TCG 2.0 specification and TCG software stack 2.0 via LPC connector on CPU card
- Hardware based data protection solution for storage device encryption and decryption
- Dimensions (L x H) : 31.5 x 30.5 mm (1.24" x 1.2")

X-ON Electronics

Largest Supplier of Electrical and Electronic Components

Click to view similar products for [Other Modules](#) category:

Click to view products by [Advantech](#) manufacturer:

Other Similar products are found below :

[AC1310](#) [AXXRPFKSSD](#) [B7A-R6F36](#) [RMS3CC080](#) [96RC-SAS-8P-PE-AD](#) [96RC-SAS-4P-PE-AD1](#) [VROCISSDMOD](#) [RS3WC080](#)
[OKY3525-1](#) [OKY3065-6](#) [OKY3199-7](#) [OKY3222-2](#) [OKY3318](#) [OKY3318-1](#) [OKY3318-3](#) [OKY3368](#) [OKY3368-1](#) [OKY3369-2](#) [OKY3369-3](#)
[OKY3370-1](#) [OKY3374-1](#) [OKY3375-6](#) [OKY3378-1](#) [OKY3380-2](#) [OKY3381](#) [OKY3387](#) [OKY3416](#) [OKY3420-5](#) [OKY3420-7](#) [OKY3425](#)
[OKY3431-2](#) [OKY3443-1](#) [OKY3444-2](#) [OKY3449](#) [OKY3452-3](#) [OKY3459](#) [OKY3460-4](#) [OKY3463-5](#) [OKY3471-4](#) [OKY3471-6](#) [OKY3481-2](#)
[OKY3482](#) [OKY3483](#) [OKY3507](#) [OKY3551-1](#) [OKY3605](#) [OKY3919](#) [FIT0827](#) [FIT0832](#) [FIT0767](#)