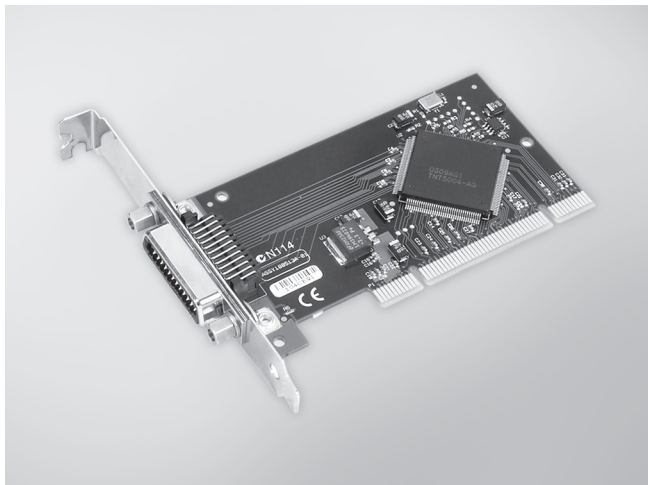


PCI-1671UP

IEEE-488.2 Interface Low Profile Universal PCI Card



FCC CE RoHS

Features

- IEEE 488.2 Standard interface
- Complete Talker/Listener/Controller
- Industry standard 32-bit PCI bus
- Data transfer rates over 1.5 MB/s
- 1,024-word FIFO buffer
- High-Speed State Machine Bus Manager
- 7 Interrupt lines, shared interrupt capability
- Transparent interrupt enabling/disabling
- Includes GPIB-Library software
- Low profile MD1 size
- Support industrial standard VISA

Introduction

The PCI-1671UP IEEE-488 interface converts any PCI bus personal computer into an instrumentation control and data acquisition system. Connect up to 14 instruments using standard IEEE-488 cables such as the PCL-10488-2, 2 meter IEEE-488 interface cable. The PCI-1671UP transfers data over the GPIB at rates in excess of 1.5 million bytes per second using the maximum IEEE-488 specification cable length (2 meters times the # of devices). A 1,024-word FIFO buffer and the advanced REP-INSW ISR data transfer method provide the horsepower required to then transfer the data between the GPIB board and the host computer. The high-speed state machine also provides byte-to-word packing and unpacking, and because words carry twice the information that bytes do, packed data requires fewer bus cycles to transfer the same GPIB information.

The PCI-1671UP adheres to ANSI/IEEE Standard 488-1978. Often referred to as the IEEE-488.2 bus, GPIB bus or HP-IB bus, the GPIB (General Purpose Interface Bus) is a standard for instrumentation communication and control for instruments from manufacturers the world over. The GPIB provides handshaking and interface communications over an 8-bit data bus employing 5 control and 3 handshake signals. Equipped with PCI-1671UP, a personal computer can control GPIB instruments, gather data from GPIB test equipment, or become a data acquisition station in a GPIB system.

Specifications

GPIB

- **Compatibility** IEEE 488.1, 488.2
- **GPIB Transfer Rate** 1.5 MB/s
- **OS Support** Windows 2000/XP/Vista/7/10
- **Library Support** Visual C++, Visual C#, Visual Basic, Visual Basic .NET, Delphi, LabView
- **Max. GPIB Connections** 15 (14 Listener)

General

- **Bus Type** Universal PCI V2.2
- **I/O Connectors** 1 x 24-pin IEEE 488
- **Dimensions (L x H)** 120 x 64 mm (Low profile MD1)
- **Power Consumption** 5 V_{DC} @ 375 mA
- **Operating Temperature** 0 ~ 60°C (32 ~ 158°F) @ 0-90% RH
- **Storage Temperature** -40 ~ 100°C (-40 ~ 212°F) @ 5-90% RH
- **Operating Humidity** 0 ~ 90% RH, non-condensing

Ordering Information

- **PCI-1671UP** High-perform. IEEE-488.2 Interface PCI Card

Accessories

- **PCL-10488-2E** IEEE-488 Cable, 2 m

X-ON Electronics

Largest Supplier of Electrical and Electronic Components

Click to view similar products for [Interface Modules](#) category:

Click to view products by [Advantech](#) manufacturer:

Other Similar products are found below :

[IFD8520](#) [cPCI-3544](#) [422CON](#) [ATX6022/14GP7](#) [ATX6022/8](#) [AX93221-24/48](#) [FC6A-EXM2](#) [OPT8AP-AE](#) [96RMKVM-19V1C-A](#) [60016-011](#) [60016-014](#) [60006-008](#) [60011-075](#) [HPCI-14S12U](#) [cBP-3208](#) [cBP-3062A](#) [FAB205-6P5](#) [ATX6022/6](#) [60016-012](#) [96RMKVM-17V1C-A](#) [PCE-DP10-00A1E](#) [MOS-1120Y-0201E](#) [96RMLCD-17V1-A](#) [96RMKVM-17V8C-A](#) [60004-005](#) [60016-017](#) [60006-009](#) [60016-035](#) [60016-034](#) [60016-031](#) [60016-030](#) [60016-026](#) [60016-024](#) [60016-018](#) [60016-007](#) [60016-005](#) [60007-002](#) [60006-010](#) [AXX10GBTWLHW3](#) [382-BBEH](#) [555-BDCL](#) [K6CMISZBI52](#) [426451401-3](#) [60011-093](#) [MIC-3620/3-BE](#) [MPCIE-UART-KIT02-R20](#) [RSM232](#) [PCIE-1680-AE](#) [BB-FOSTCDRI](#) [73-544-002](#)