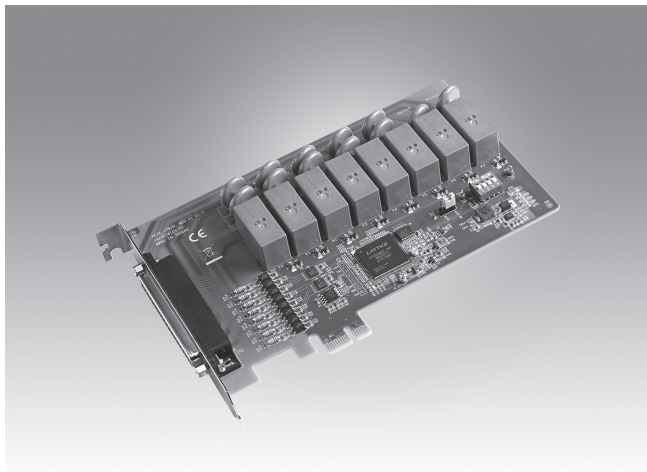


PCIE-1761H

8-ch Relay and 8-ch Isolated Digital Input w/ digital filter and interrupt PCIe Card



Features

- 8 opto-isolated digital input channels
- 8 relay actuator output channels
- Interrupt handling capability for all DI channels
- Selectable Digital filter time for all DI channels
- Output status readable
- LED indicator to show activated relays
- Selectable Form A or Form C

Introduction

The PCIE-1761H provides 8 opto-isolated digital inputs with isolation protection of 2,500 V_{DC} for collecting digital inputs in noisy environments, 8 relay actuators that can be used as an on/off control devices or small power switches.

All of the input signals can be used as interrupt request signals and also disable or enable the interrupt in each channel and support the edge of the input signals, at which to generate an interrupt. All of PCIE-1761H DI channel has a digital filter to prevent wrong recognition of input signals from carrying noise or a chattering.

Specifications

Isolated Digital Input

- **Channels** 8
- **Input Voltage** Logic 0: 3.0 V max.
Logic 1: 10 V min. (30V max.)
- **Input current** 4.1mA @ 12 V_{DC}
7.7mA @ 24 V_{DC}
- **Over-voltage protect** 70 V_{DC}
- **Interrupt Capable Ch.** 8 (IDIO ~ IDI7)
- **Isolation Protection** 2,500 V_{DC}
- **Opto-Isolator Response** 100 μs
- **Input Resistance** 2.7k Ohm @ 1 W
- **Digital Filter Time**

Setting Data (n)	Digital Filter Time	Setting Data (n)	Digital Filter Time
7 (07h)	16μsec	14 (0Eh)	2.048msec
8 (08h)	32μsec	15 (0Fh)	4.096msec
9 (09h)	64μsec	16 (10h)	8.192msec
10 (0Ah)	128μsec	17 (11h)	16.384msec
11 (0Bh)	256μsec	18 (12h)	32.768msec
12 (0Ch)	512μsec	19 (13h)	65.536msec
13 (0Dh)	1.024msec	20 (14h)	131.072msec

Relay Output

- **Channels** 8
- **Relay Type** 4 x Form C, and 4 x Form A
- **Contact Rating** 2 A @ 250 V_{AC}, 2 A @ 30 V_{DC}
- **Max. Switching Power** 500 VA, 60 W
- **Max. Switching Voltage** 400 V_{AC}, 300 V_{DC}
- **Operating Time** Typical: 7ms
- **Release Time** Typical: 2ms
- **Resistance** Contact: 100 m Ohm max.
- **Breakdown Voltage** 1000 V_{AC}
- **Life Expectancy** 3 x 10⁶ cycles min. @ 2A/ 250V_{AC}

General

- **I/O Connectors** 1 x DB37 female connector
- **Dimensions (L x H)** 168 x 100 mm (6.6" x 3.9")
- **Power Consumption** Typical: 3.3V @250mA
Max. : 3.3V @1600mA
- **Operating Temperature** 0 ~ 60°C (32 ~ 140°F)
- **Storage Temperature** -20 ~ 70°C (-4 ~ 158°F)
- **Storage Humidity** 5 ~ 95 % RH, non-condensing

Ordering Information

- **PCIE-1761H-AE** 8-ch Relay and 8-ch Isolated Digital Input PCIe Card

Accessories

- **PCL-10137-1E** DB37 Cable, 1 m
- **PCL-10137-2E** DB37 Cable, 2 m
- **PCL-10137-3E** DB37 Cable, 3 m
- **ADAM-3937-BE** DB37 DIN-rail Wiring Board

X-ON Electronics

Largest Supplier of Electrical and Electronic Components

Click to view similar products for [I/O Modules](#) category:

Click to view products by [Advantech](#) manufacturer:

Other Similar products are found below :

[70L-IDC5S](#) [70L-OAC-L](#) [70Z3289-4](#) [G21960000700](#) [G21960002700](#) [G88104401](#) [GUR02](#) [OACU](#) [PB16H](#) [SM-IDC15](#) [G77-S](#) [G78-16-E](#)
[GP34829091724](#) [GP34960005700](#) [JQP4](#) [ODC-24A](#) [IDC5P](#) [FC6A-N16B1](#) [6421](#) [FC6A-N32B3](#) [70MRCQ32-HL](#) [70Z5120](#) [C200H-LK201-](#)
[V1](#) [G3TA-OA202SZ-US](#) [DC12](#) [GT1-OD16](#) [GT1-AD04CST](#) [GT1-DA04](#) [B7AM-6BS](#) [GRT1-ML2](#) [GRT1-TS2P](#) [CRT1-ID16TAH-1](#)
[70GRCQ24-HS](#) [CRT1-ID08](#) [G7TC-ID16](#) [DC24V](#) [CRT1-ID08-1](#) [84110210](#) [6422](#) [AIIS-DIO32-00A1E](#) [84110410](#) [GT1-OD16MX](#) [GRT1-PC8](#)
[G7VC-OC16-B7](#) [G7TC-OC08-1](#) [DC24V](#) [G7TC-IA16](#) [AC200/220V](#) [G7TC-OC08](#) [DC24V](#) [70MRCK24-DIN](#) [2736505](#) [ODC5AQ](#) [PI/NI-](#)
[2D/24](#) [FC6A-KC1C](#)