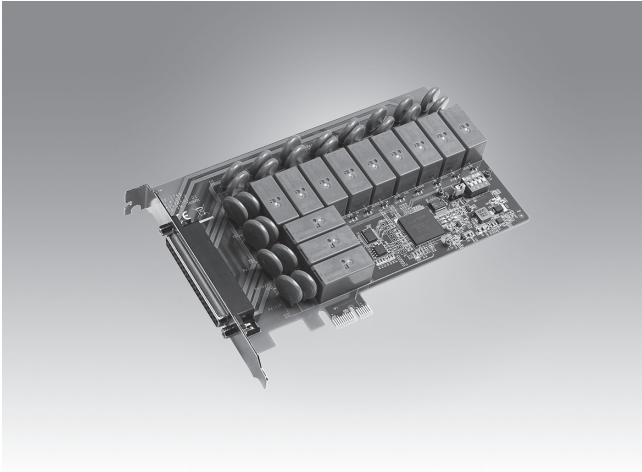


PCIE-1765

12-ch Relay PCIe Card



Features

- 12 relay output channels
- LED indicators to show activated relays
- 12 Form C-type relay output channels
- Output status read-back
- Keep relay output values after emergency reboot

Introduction

The Advantech PCIE-1765 is a 12-channel relay actuator with contact rating up to 2A@30V_{DC} current for the PCIe bus. Its 12 on-board SPDT relays are ideal for applications such as device ON/OFF control or small power switched. For easy monitoring, each relay is equipped with one red LED to show its ON/OFF status.

Specifications

Relay Output

- **Channels** 12
- **Relay Type** SPDT , Form C
- **Contact Rating** 2A@250 V_{AC} , 2A@30 V_{DC}
- **Max. switching power** 500VA, 60W
- **Max. switching voltage** 400 V_{AC}, 30 V_{DC}
- **Breakdown voltage** 1000 V_{AC}
- **Operate Time** Typical: 7ms
- **Release Time** Typical: 2ms
- **Resistance** Contact: 100m Ohm max.
- **Life Expectancy** 30 x 10⁶ cycles min. @ 2A/250 V_{AC}

General

- **I/O Connectors** 1 x DB37 female connector
- **Dimensions (L x H)** 168 x 100 mm (6.6" x 3.9")
- **Power Consumption** Typical: 3.3V @ 250mA
Max. : 3.3V @ 2500mA
- **Operating Temperature** 0 ~ 60°C (32 ~ 140°F)
- **Storage Temperature** -20 ~ 70°C (-4 ~ 158°F)
- **Storage Humidity** 5 ~ 95 % RH, non-condensing

Ordering Information

- **PCIE-1765-AE** 12-ch Relay PCIe Card

Accessories

- - **PCL-10137-1E** DB37 Cable, 1 m
- - **PCL-10137-2E** DB37 Cable, 2 m
- - **PCL-10137-3E** DB37 Cable, 3 m
- - **ADAM-3937-BE** DB37 DIN-rail Wiring Board

X-ON Electronics

Largest Supplier of Electrical and Electronic Components

Click to view similar products for [I/O Modules](#) category:

Click to view products by [Advantech](#) manufacturer:

Other Similar products are found below :

[70L-IDC5S](#) [70L-OAC-L](#) [70Z3289-4](#) [G21960000700](#) [G21960002700](#) [G34960002700](#) [OACU](#) [C4SWOUT](#) [PB16H](#) [G34960001700](#) [G3TA-OA101SZ-1](#) [DC24](#) [G77-S](#) [5607189](#) [DA5](#) [ODC-24A](#) [IDC5P](#) [FC6A-N16B1](#) [6421](#) [70MRCQ32-HL](#) [G3TAOD201SDC24](#) [C200H-LK201-V1](#)
[G3TA-OA202SZ-US](#) [DC12](#) [GT1-OD16](#) [GT1-AD04CST](#) [B7AM-6BS](#) [70GRCQ24-HS](#) [6422](#) [84110410](#) [GT1-OD16MX](#) [G7VC-OC16-B7](#)
[70MRCK24-DIN](#) [6202](#) [6402](#) [PI/NI-2D/24](#) [FC6A-J2C1](#) [FC6A-KC1C](#) [FC6A-R081](#) [FC6A-J8CU1](#) [GP32900003700](#) [641-480-5022](#) [PB16H](#)
[84145010](#) [84110210](#) [FRUSB1601](#) [PCL-720+-BE](#) [FRRJ451601](#) [AP24MX3DB25F](#) [ADAM-5053S-AE](#) [WISE-S614-A](#) [C200H-OD211](#)