

PCM-3610

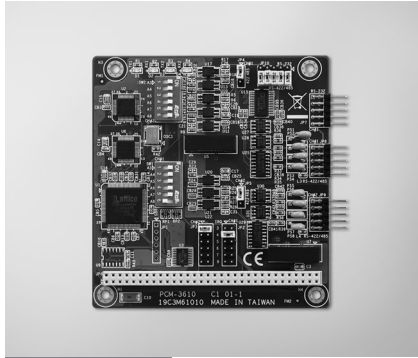
PCM-3612

PCM-3614

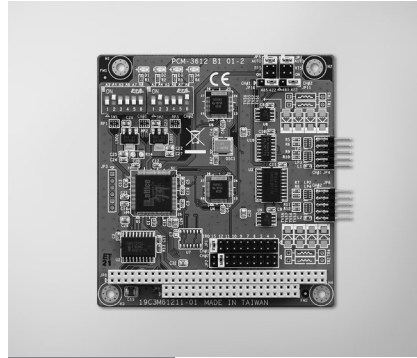
2-port RS-232/422/485 PC/104 Module with Isolation Protection

2-port RS-422/485 PC/104 Module

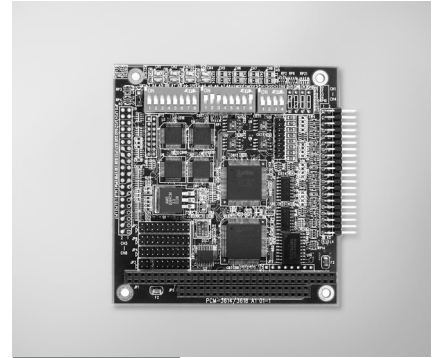
4-port RS-422/485 High-speed PC/104 Module



PCM-3610



PCM-3612



PCM-3614



Features

- High speed transmission rate
- Automatic RS-485 data flow control
- Jumper selectable interrupt level
- Supports Windows 2000/XP/Vista/7
- Supports WinCE 4.2, 5.0
- Powerful and easy-to-use utility (ICOM Tools)

Specifications

General

- **Card Interface** PC/104
- **Certification** CE, FCC
- **Connectors** 2 x DB9-M
- **Ports** 2
- **Power Consumption** +5V @ 400mA (Typical)

Communications

- **Channel 1** RS-232, 422, or 485
- **Channel 2** RS-422, or RS-485
- **Character Length** 5, 6, 7, or 8 bits
- **IRQ** 3, 4, 5, 6, 7, 9
- **Parity** Even, Odd, or None
- **Speed** 50 bps ~ 115.2 kbps
- **Stop Bit** 1, 1.5, or 2

Protection

- **Isolation Protection** 2,500 V_{DC}

Environment

- **Operating Humidity** 0 ~ 90 % RH
- **Operating Temperature** -40 ~ 85°C (-40 ~ 185°F)
- **Storage Temperature** -40 ~ 85°C (-40 ~ 185°F)

Ordering Information

- **PCM-3610** Isolated RS-232/422/485 Module

Features

- Long distance communication
- Automatic RS-485 data flow control
- Jumper selectable interrupt level
- Supports Windows 2000/XP/Vista/7
- Supports WinCE 4.2, 5.0
- Powerful and easy-to-use utility (ICOM Tools)

Specifications

General

- **Card Interface** PC/104
- **Certification** CE, FCC
- **Connectors** 2 x DB9-M
- **Indicators** Red LED for TX
Green LED for RX
- **Ports** 2
- **Power Consumption** +5V @ 400mA (Typical)

Communications

- **Channel 1 and 2** RS-422, or RS-485
- **Character Length** 5,6,7, or 8 bits
- **IRQ** 3, 4, 5, 6, 7, 9, 10, 11, 12 or 15
- **Parity** Even, Odd, or None
- **Speed** 50 bps ~ 115.2 kbps
- **Stop Bit** 1, 1.5, or 2

Environment

- **Operating Humidity** 0 ~ 90 % RH
- **Operating Temperature** -40 ~ 85°C (-40 ~ 185°F)
- **Storage Temperature** -40 ~ 85°C (-40 ~ 185°F)

Ordering Information

- **PCM-3612** Dual Port RS-422/485 Module

Features

- Automatic RS-485 data flow control
- Shared IRQ settings for each ports
- LED indicators: TX, RX
- Standard PC ports: COM1, COM2, COM3, COM4 compatible
- Supports Windows 2000/XP/Vista/7
- Supports WinCE 4.2, 5.0
- Powerful and easy-to-use utility (ICOM Tools)

Specifications

General

- **Card Interface** PC/104
- **Certification** CE, FCC
- **Connectors** 4 x DB9-M
- **Ports** 4
- **Power Consumption** +5V @ 450mA (Typical)

Communications

- **Data Bits** 5, 6, 7, 8
- **I/O Address Range** 0 x 000 ~ 0 x 3F8
- **IRQ** 3, 4, 5, 6, 7, 9, 10, 11, 12, or 15
- **Parity** Even, Odd, or None
- **Data Signals** RS-422: TxD+, TxD-, RxD+, RxD-, CTS+, CTS-, RTS+, and RTS-
RS-485: DATA+, DATA-
50 bps ~ 921.6 kbps
- **Speed** 50 bps ~ 921.6 kbps
- **Stop Bits** 1, 1.5, 2
- **Termination Resistor** 120 Ω

Environment

- **Operating Humidity** 0 ~ 90 % RH
- **Operating Temperature** 0~65°C (32~149°C)
- **Storage Temperature** -40 ~ 85°C (-40 ~ 185°F)

Ordering Information

- **PCM-3614** 4-port RS-422/485 High-speed Module

X-ON Electronics

Largest Supplier of Electrical and Electronic Components

Click to view similar products for [Interface Modules](#) category:

Click to view products by [Advantech](#) manufacturer:

Other Similar products are found below :

[IFD8520](#) [cPCI-3544](#) [422CON](#) [ATX6022/14GP7](#) [ATX6022/8](#) [AX93221-24/48](#) [FC6A-EXM2](#) [OPT8AP-AE](#) [96RMKVM-19V1C-A](#) [60016-011](#) [60016-014](#) [60006-008](#) [60011-075](#) [HPCI-14S12U](#) [cBP-3208](#) [cBP-3062A](#) [FAB205-6P5](#) [ATX6022/6](#) [60016-012](#) [96RMKVM-17V1C-A](#) [PCE-DP10-00A1E](#) [MOS-1120Y-0201E](#) [96RMLCD-17V1-A](#) [96RMKVM-17V8C-A](#) [60004-005](#) [60016-017](#) [60006-009](#) [60016-035](#) [60016-034](#) [60016-031](#) [60016-030](#) [60016-026](#) [60016-024](#) [60016-018](#) [60016-007](#) [60016-005](#) [60007-002](#) [60006-010](#) [AXX10GBTWLHW3](#) [382-BBEH](#) [555-BDCL](#) [K6CMISZBI52](#) [426451401-3](#) [60011-093](#) [MIC-3620/3-BE](#) [MPCIE-UART-KIT02-R20](#) [RSM232](#) [PCIE-1680-AE](#) [BB-FOSTCDRI](#) [73-544-002](#)