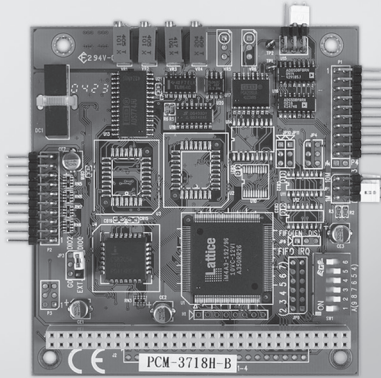


# PCM-3718H/HG/HO PCM-3724

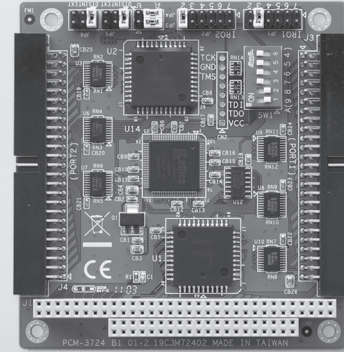
100 kS/s, 12-bit, 16-ch  
Multifunction PC/104 Module

48-ch Digital I/O PC/104  
Module



PCM-3718H/HG/HO

FCC CE RoHS



PCM-3724

FCC CE RoHS

## Specifications

### Analog Input

- **Channels** 16 single-ended / 8 differential
- **Resolution** 12 bits
- **Max. Sampling Rate** 100 KHz\* (DMA transfer)  
\*80 kHz on P4-based (or upper) system
- **Input Impedance** 10 M $\Omega$
- **Sampling Modes** Software, pacer or external
- **Input Range**

PCM-3718H and PCM-3718HO	<b>Bipolar</b>	$\pm 10, \pm 5, \pm 2.5, \pm 1.25, \pm 0.625$
	<b>Unipolar</b>	$0 \sim 10, 0 \sim 5, 0 \sim 2.5, 0 \sim 1.25$
PCM-3718HG	<b>Bipolar</b>	$\pm 10, \pm 5, \pm 1, \pm 0.5, \pm 0.1, \pm 0.05, \pm 0.01, \pm 0.005$
	<b>Unipolar</b>	$0 \sim 10, 0 \sim 1, 0 \sim 0.1, 0 \sim 0.01$

### Analog Output (PCM-3718HO only)

- **Channels** 1 (12 bits)
- **Output Range**

<b>Internal Reference</b>	<b>Unipolar (V)</b>	$0 \sim 5, 0 \sim 10$
<b>External Reference (V)</b>		$0 \sim 10, 0 \sim -10$

- **Slew Rate** 10 V/ $\mu$ s
- **Output Impedance** 0.1 W max.

### Digital Input/Output

- **Channels** 16, 5V/TTL
- **Input Voltage** Logic 0: 0.8 V max.  
Logic 1: 2.0 V min.
- **Output Voltage** Logic 0: 0.33 V max. @ 6 mA  
Logic 1: 3.84 V min. @ 6 mA

### General

- **Bus Type** PC/104
- **I/O Connectors** 2 x 20-pin box header
- **Dimensions (L x H)** 96 x 90 mm (3.8" x 3.5")
- **Power Consumption** Typical: 5 V @ 180 mA  
Max.: 5 V @ 400 mA
- **Operating Temperature** 0 ~ 60°C (32 ~ 140°F)
- **Storage Temperature** -40 ~ 85°C (-40 ~ 185°F)

## Ordering Information

- **PCM-3718H** 100 kS/s, 12-bit Multi. PC/104 Module
- **PCM-3718HG** 100 kS/s, 12-bit High-gain Multi. PC/104 Module
- **PCM-3718HO** 100 kS/s, 12-bit Multi. PC/104 Module w/AO

### Accessories

- **ADAM-3920** 20-pin DIN-rail Flat Cable Wiring Board
- **PCL-10120-1E** 20-pin Flat Cable, 1 m
- **PCL-10120-2E** 20-pin Flat Cable, 2 m

## Features

- Compact size with robust design
- 48 TTL digital I/O lines
- Output status read-back
- Channels simulate 8255 PPI mode 0
- Interrupt triggering, rising/falling edge

## Specifications

### Digital Input

- **Channels** 48 (shared with output)
- **Compatibility** 5 V/TTL
- **Input Voltage** Logic 0: 0.8 V max.  
Logic 1: 2.0 V min.
- **Interrupt Capable Ch.** 2

### Digital Output

- **Channels** 48 (shared with input)
- **Compatibility** 5 V/TTL
- **Output Voltage** Logic 0: 0.5 V max. @ 6 mA  
Logic 1: 2.0 V min. @ 6 mA

### General

- **Bus Type** PC/104
- **I/O Connectors** 2 x 50-pin box header
- **Dimensions (L x H)** 96 x 90 mm (3.8" x 3.5")
- **Power Consumption** 5 V @ 90 mA
- **Operating Temperature** 0 ~ 60°C (32 ~ 140°F)
- **Storage Temperature** -40 ~ 85°C (-40 ~ 185°F)
- **Storage Humidity** 0 ~ 90% RH, non-condensing

## Ordering Information

- **PCM-3724** 48-ch Digital I/O PC/104 Module w/ 50-pin Cable

### Accessories

- **ADAM-3950** 50-pin DIN-rail Flat Cable Wiring Board
- **PCLD-782B** 24-ch IDI Board w/ 20-pin & 50-pin Flat Cables
- **PCLD-785B** 24-ch Relay Board w/ 20-pin & 50-pin Flat Cables
- **PCL-10150-1.2E** 50-pin Flat Cable, 1.2 m

## X-ON Electronics

Largest Supplier of Electrical and Electronic Components

*Click to view similar products for [Data Logging & Acquisition](#) category:*

*Click to view products by [Advantech](#) manufacturer:*

Other Similar products are found below :

[PCI-6208A](#) [DAQe-2502](#) [PXI-2208](#) [ACL-8112DG](#) [SpotBotBLE](#) [LPCI-7230](#) [USB-4761-BE](#) [SE028](#) [PCI-1761-BE](#) [AR207/8/S1/PPPP/IP65](#)  
[PCI-1711UL-CE](#) [USB-4702-AE](#) [USB-4704-AE](#) [USB-4716-AE](#) [USB-4750-BE](#) [USB-4751-AE](#) [PCIE-1810-AE](#) [PCI-1710U-DE](#) [PCI-](#)  
[1710HGU-DE](#) [AR207/8/S1/PPPP/IP30](#) [U2781A](#) [4610](#) [EL-USB-5](#) [AR407/S1/P/P/P/P](#) [AR207/8/S2/PPPP/IP30](#) [ACL-8112PG](#) [cPCI-7248](#)  
[cPCI-7433](#) [DAQ-2213](#) [ND-6053](#) [ND-6060](#) [PCI-7230](#) [PCI-7432](#) [PCI-7442](#) [PCI-9112](#) [PCI-9112A](#) [PCI-9113A](#) [PCI-9221](#) [PCM-7248+](#) [USB-](#)  
[1903](#) [USB-2401](#) [PCIE-1813-AE](#) [PCIE-1816-AE](#) [PCIE-1816H-AE](#) [PCIE-1884-AE](#) [USB-5856-AE](#) [USB-5862-AE](#) [AR654/S1/P/P/P/P/IP30](#)  
[AR654/S2/P/P/P/P/IP30](#) [DAS30](#)