

SQF-P10

Industrial CompactFlash



Specifications

Capacity	256MB/1G/2G/4G/8G/16G/32G/64G
Flash Type	SLC/MLC
Compatibility	CF 3.0, PC Card, Socket Services
Form Factor	CF Type-I
Voltage	3.3 V / 5.0 V
Data Transfer Mode	PIO Mode-6 MWDMA Mode-2 UDMA Mode-4 (4CH UDMA5)
Sustained R/W Performance (*)	SLC 4 channel: 83/87 MB/sec SLC 2 channel: 43/40 MB/sec SLC 1 channel: 22/15 MB/sec MLC 2 channel: 43/20 MB/sec
Operation Temperature	Commercial Grade: 0 to +70° C Extended Grade: -40 to +85° C
Host interface	8/16 bit access
ECC (BCH)	Corrects up to 48 random bit errors per 2K bytes
Endurance	> 5,000,000 program/erase cycles
Shock resistance	1,500 G, Peak / 0.5 ms
Vibration resistance	20 G, Peak / 80 ~ 2000 Hz

(*)The values are for reference only; they may change according to the flash memory used.

Ordering Information

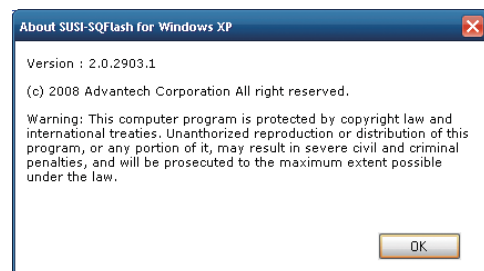
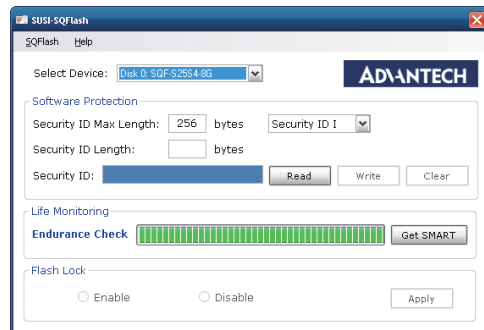
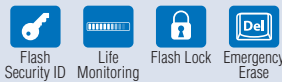
Part No.	Product Description
SQF-P10S1-XX-P8C	SQFlash SLC 256M/1G CF, 1-CH, DMA (0 ~ 70° C)
SQF-P10S2-XG-P8C	SQFlash SLC 2/4/8/16G/32G CF, 2-CH, DMA (0 ~ 70° C)
SQF-P10S1-1G-P8E	SQFlash SLC 1G CF, 1-CH, DMA (-40 ~ 85° C)
SQF-P10S2-XG-P8E	SQFlash SLC 2/4/8/16G/32G CF, 2-CH, DMA (-40 ~ 85° C)
SQF-P10S4-XG-P8C	SQFlash SLC 4/8/16G/32G/64G CF, 4-CH, DMA (0 ~ 70° C)
SQF-P10S4-XG-P8E	SQFlash SLC 4/8/16G/32G/64G CF, 4-CH, DMA (-40 ~ 85° C)
SQF-P10M2-XG-P9C	SQFlash MLC 16G/32G/64G CF, 2-CH, DMA (0 ~ 70° C)
SQF-P10M2-XG-P9E	SQFlash MLC 16G/32G/64G CF, 2-CH, DMA (-40 ~ 85° C)

Note: X stands for different capacities

Features

- Compliant with CFA 3.0 specification
- Built-in EDC/ECC up to 48 random bit errors per 2K bytes
- Advanced wear-leveling and block management
- Shock resistance, anti-vibration and low power consumption
- GUI Management Tool & Software API Package

GUI Management Tool & Software API Package



X-ON Electronics

Largest Supplier of Electrical and Electronic Components

Click to view similar products for [Memory Cards](#) category:

Click to view products by [Advantech](#) manufacturer:

Other Similar products are found below :

[SQF-ISDS1-8G-21C](#) [FSCSCLC-256G](#) [FSCSCOC-001T](#) [SDSDQAF4-032G-I](#) [SDSDQAF4-256G-I](#) [AP-CF002GKBNS-ETNRG](#)
[SFCE240GW1EB4TO-I-6F-111-STD](#) [SFCE060GW1EB2TO-I-5E-111-STD](#) [SQF-ISDS1-4G-21E](#) [AP-CF008GRBNS-NRG](#) [AF256GUD4-](#)
[BBAXM](#) [VSFCS2XI120G-V11](#) [SFCE120GW1EB4TO-I-5E-111-STD](#) [SDSDQAF3-128G-XI](#) [SDSDQEB-016G](#) [SQF-MSDS1-1G-21C](#)
[SFCA032GH1AO2TO-C-QC-216-STD](#) [SFCE030GW1EB1TO-I-5E-111-STD](#) [SFCE015GW1EB1TO-I-5E-111-STD](#) [HMC-EF283](#) [SDCFXPS-](#)
[032G-X46](#) [SDCFXSB-128G-G46](#) [SDSDQAF3-032G-I](#) [SDSDQAF3-064G-I](#) [SDSDQB-032G-B35](#) [SDSDQM-032G-B35A](#) [SDU4GDMGRB](#)
[SDU4GDPGRB](#) [92140-005LF](#) [AF1GSDI-OEM](#) [SDC4GDPGRB](#) [SDSDAA-032G](#) [SDSDAF3-032G-I](#) [HMC-EF183](#) [RP-SMPT04DA1](#) [RP-](#)
[SMPT08DA1](#) [HMC-SD291](#) [RP-SDHT64DA1](#) [SQF-MSDM1-4G-21E](#) [2729389](#) [2701799](#) [2913157](#) [SDSDAG3-016G-XA](#) [RP-SMTT64DA1](#)
[SQF-P10S2-4G-P8E](#) [96FMCFI-16G-ET-AP4](#) [AP-CF032GRANS-ETNRC](#) [AP-CF016GRANS-ETNRC](#) [AP-CF004GRANS-ETNRC](#) [AP-](#)
[CF001GRANS-ETNRC](#)