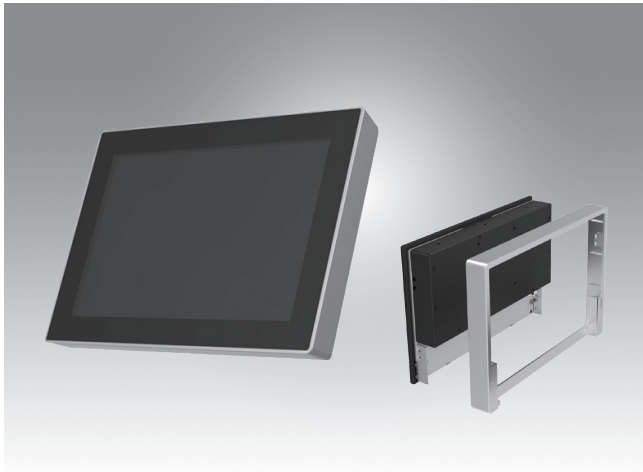


# UTC-510

**10.1" Ubiquitous Touch Computer**  
**UTC-510D with Intel® Atom® E3825 & Celeron® J1900**  
**UTC-510G with Intel® Celeron® N3350 & Pentium® N4200**



## Features

- Low Power & Fanless design
- Built-in Intel® Atom® E3825/Celeron® J1900 (UTC-510D)
- Built in Intel® Celeron® N3350/Pentium® N4200 (UTC-510G)
- Providing Natural Viewing Experience with 16:10 10.1" Display
- Landscape & Portrait screen mode support by different applications
- VESA 75 mm standard mounting holes for varied mounting demands
- Detachable plastic frame design for panel mount applications



## Introduction

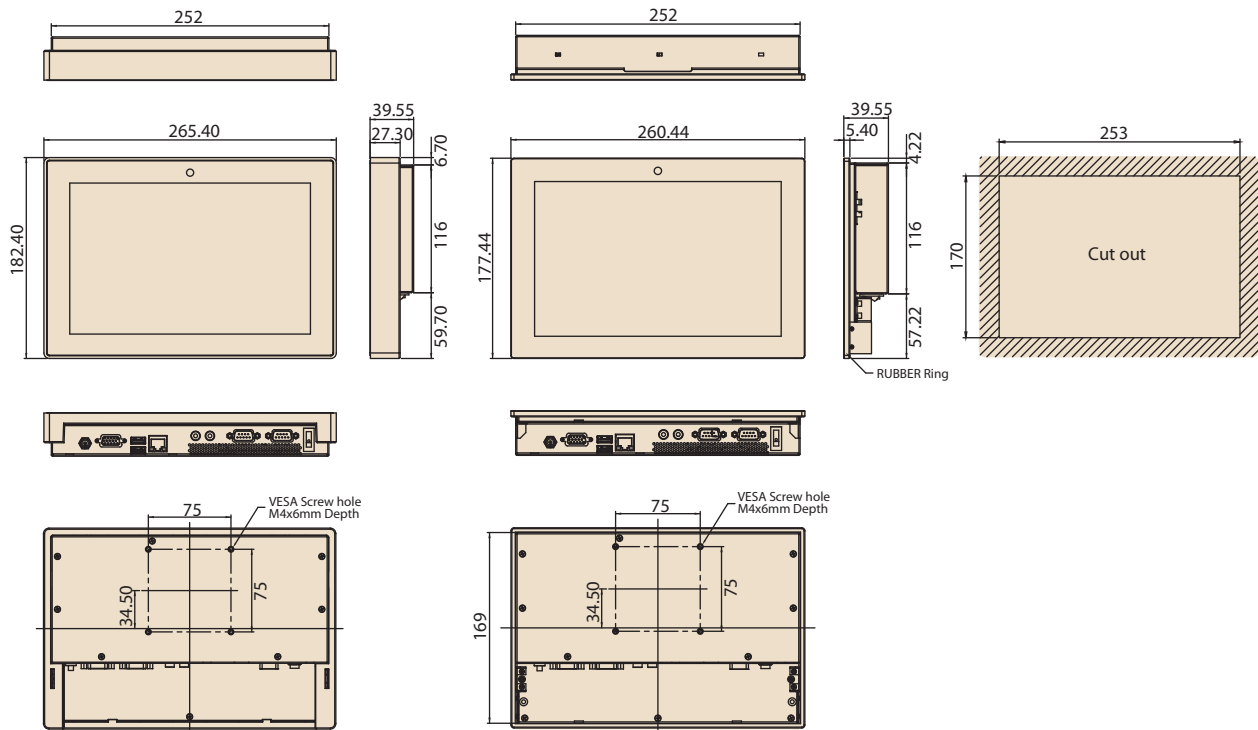
UTC-510 features an all-in-one computing system equipped with wide format, touch based LCD panel. It is easy to integrate key peripherals and display systems for diversified self-service and interactive signage deploy in different application areas. The systems deliver updated information with well-designed interactive interfaces, fully ensure relevant content and targeted promotions are delivered. UTC series touch panel computers are the best investments to enhance user satisfaction, further brand equity, and maximize business profits.

## Specifications

Processor System	CPU	Intel® Atom® E3825 (UTC-510D)	Intel® Celeron® J1900 (UTC-510D)	Intel® Celeron® N3350 (UTC-510G)	Intel® Pentium® N4200 (UTC-510G)
	Base Frequency	1.33 GHz (Dual-Core)	2 GHz (Quad-Core)	1.10 GHz (Dual-Core)	1.10 GHz (Quad-Core)
	Cache	L2 Cache 1MB	L2 Cache 2MB	L2 Cache 2MB	L2 Cache 2MB
	Memory	1 x 204 pin SO-DIMM DDR3L 1066 MHz up to 8 GB	1 x 204 pin SO-DIMM DDR3L 1333 MHz up to 8 GB	1 x 204 pin SO-DIMM DDR3L 1866 MHz up to 8 GB	
	HDD	1 x 2.5 internal SATA HDD bay			
	Network (LAN)	1 x Gigabit Ethernet ports (Supports Wake on LAN)			
	I/O ports	2 x RS-232 COM (COM1 RS-422/485 supported)* 1 x USB 2.0 / 1 x USB 3.0 / 2 x USB 2.0 (optional)*		2 x RS-232 COM (COM1 RS-422/485 supported)* 2 x USB 3.0 / 2 x USB 2.0 (optional)*	
	Stereo Speaker	1 x Gigabit Ethernet (RJ-45) 1 x VGA Audio Line-out x 1, Mic-in x 1		1 x Gigabit Ethernet (RJ-45) 1 x VGA Audio Line-out x 1, Mic-in x 1	
	Bus expansion	1 Half size MiniPCle 1 Half size mSATA		1 Full size MiniPCle 1 Half size mSATA	
	Mounting	VESA 75 x 75 mm			
Dimensions (W x H x D)	265.40 x 182.40 x 39.55 mm				
Weight	1.80 kg (3.97 lbs)				
OS Support	WES7P 32/64bit WES7E 32bit Windows Pro Embedded 7 Pro 32/64bit WES8 32bit Windows Embedded 8.1 Industry Pro 64bit Win 10 IoT Enterprise 64bit Linux Ubuntu 16.04 Android 4.4			Window 10 IoT Enterprise Linux Ubuntu 16.04 Android 6.0	
Front Panel Protection	IP 65 Compliant				
Environmental Specifications	Operating Temperature	0 ~ 40° C (32 ~ 104° F)	0 ~ 35° C (32 ~ 95° F)	0 ~ 45° C (32 ~ 113° F)	
	Relative Humidity	10 ~ 95% @ 40° C non-condensing			
	Vibration	1Grms			
	Shock	5G peak acceleration (11 msec. duration)			
	Certification	CE, FCC, CB, UL, CCC, BSMI			
Power Supply	Input Rating	12 V/3 A (36W ITE Adapter)			
	Power consumption	Typical 10W Max. 20W			
LCD Display	Size/Type	10.1" TFT LCD with LED backlight			
	Max.Resolution	1280 x 800			
	Max. Color	16.7M			
	Pixel Pitch (um)	169.5 x 169.5			
	Brightness (cd/m <sup>2</sup> )	350			
	View Angle	170 / 170			
Touch Screen Option (PE/GE)	Camera	5 Mega Pixel (Optional)			
	Type	Projected Capacitive. Glass Panel			
Touch Screen Option (PE/GE)	Light Transmission	80% ± 5% / 90%			
	Controller	USB Interface / -			

**Dimensions**

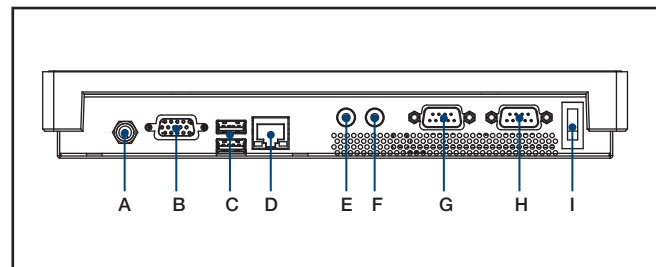
Unit: mm



**Ordering Information**

Part No.	Description
UTC-510DP-ATB0E	10.1" Intel Atom E3825 Based fanless UTC with PCT.T/S 2GB RAM
UTC-510DG-ATB0E	10.1" Intel Atom E3825 Based fanless UTC with Glass 2GB RAM
UTC-510DP-ATB1E	10.1" Intel Celeron J1900 Based fanless UTC with PCT.T/S 2GB RAM
UTC-510GP-ATB0E	10.1" Intel Celeron N3350 Based fanless UTC with PCT.T/S 2GB RAM
UTC-510GG-ATB0E	10.1" Intel Celeron N3350 Based fanless UTC with Glass 2GB RAM
UTC-510GP-ATB1E	10.1" Intel Pentium N4200 Based fanless UTC with PCT.T/S 2GB RAM
UTC-510GG-ATB1E	10.1" Intel Pentium N4200 Based fanless UTC with Glass 2GB RAM
UTC-510GP-ATN0E	10.1" Intel Celeron N3350 Based fanless UTC with PCT.T/S 2GB RAM, Ant
UTC-510GP-ATN1E	10.1" Intel Pentium N4200 Based fanless UTC with PCT.T/S 2GB RAM, Ant
1700001524	Power Cord 3P UL 10A 125V 180cm
170203180A	Power Cord 3P UK 2.5A/3A 250V 1.83M
170203183C	Power Cord 3P Europe (WS-010+WS-083)183cm
1700021374-01	Power Cord 3P CCC 2.5A 250V 250cm (IEC60320-C5)
1960073820N001	IO Cover UTC-510
1931031500	Screws for IO Cover UTC-510(*2)

**Fully- Integrated I/O**



- A. DC Power jack
- B. VGA
- C. USB 3.0 X 1, USB 2.0 x 1 (for UTC-510D)  
USB 3.0 X 2 (for UTC-510G)
- D. LAN Ports
- E. MIC-in
- F. Line-out
- G. COM 2
- H. COM 1
- I. Power switch

**Peripherals for UTC-510 series**

Part No.	Description
UTC-510P-F01E	Finger Print Reader For UTC-510 (USB connection)
UTC-510P-R01E	RFID Reader For UTC-510 (USB connection)
UTC-510P-B03E	2D Barcode Scanner - Honeywell N3680 for UTC-510 (USB connection)
UTC-510P-M01E	Magnet Strip Reader For UTC-510 (USB connection)
UTC-510P-S01E	Smart Card Reader For UTC-510 (USB connection)

**Installation Accessory**

Part No.	Description
UTC-WALL-MOUNT1E	Wall Mount kit for UTC-520/515/510
UTC-WALL-MOUNT4E	UTC-510 VESA mount (75 x 75)
UTC-S03-STANDE	UTC 75*75 mm Desktop Stand
UTC-510-STANDE	UTC-510 desktop stand
1960074091N000	UTC-510 Panel Mount Clamper (*4)
1930005598	UTC-510 Panel Mount Screw (*4)

## X-ON Electronics

Largest Supplier of Electrical and Electronic Components

*Click to view similar products for [Panel PCs category](#):*

*Click to view products by [Advantech manufacturer](#):*

Other Similar products are found below :

[GOT-5100T-832](#) [GOT-3126T-832](#) [BYARM-W071-PC](#) [STC-15WR-E3950,4G,64GB M.2](#) [STC-15WP-E3950,4G,64GB M.2](#) [POC-W152-C11D-ACE](#) [PWS-770-VMOUNT00E](#) [PWS-870-CHDC00E](#) [PWS-870-UCOVER00E](#) [TREK-572-LWB7B0E](#) [ESRP-HMI-TPC1551](#) [ESRP-HMI-TPC1251](#) [ESRP-HMI-TPCB200](#) [BYARM-181-PC](#) [BYTEM-121-PC](#) [IDOOH-210-IR](#) [AFL3-W15A-BT-J1/PC/2G-R13](#) [IOVU-07F-AD-WBC-R10](#) [003002400100](#) [1050387](#) [SPTM20XP](#) [XPTB10X](#) [UTC-W101BF-ABI0E](#) [UTC-W101B-ABI0E](#) [UTC-W101B-AWI0E](#) [UTC-532C-GE](#) [UTC-532A-GE](#) [UTC-520A-PE](#) [UTC-520A-GE](#) [TREK-722R-A1E](#) [TREK-570-00A0E](#) [PWS-870-7S6G4P5F0E](#) [PPC-174T-WL-MTE](#)  
[110070048](#)