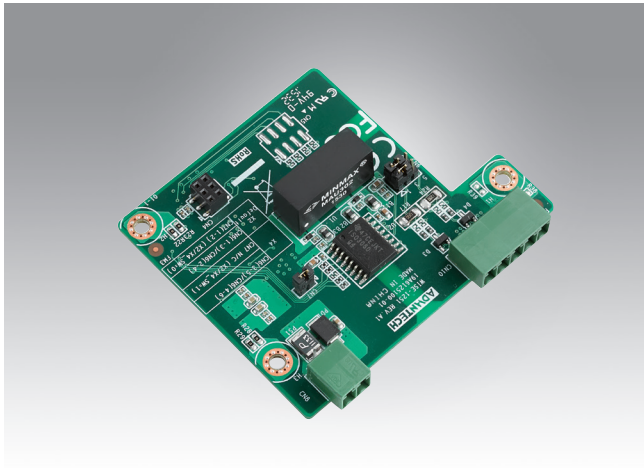


WISE-1251

RS422/485 I/O Board



CE FCC 

Specifications

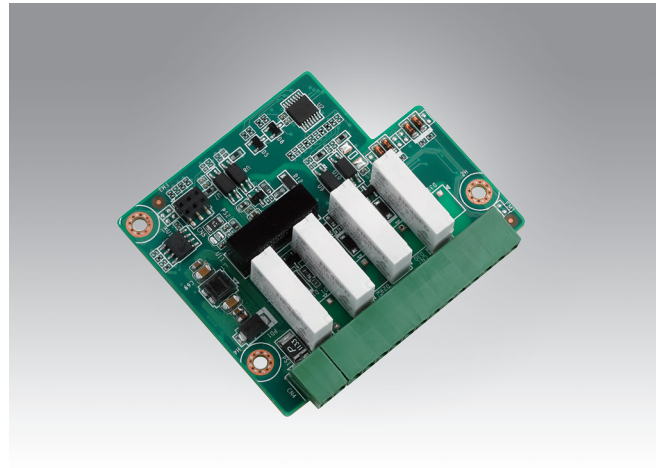
| | |
|-----------------------|--|
| Input | RS-485 (4-wire) or RS-422 (2-wire) |
| Output | RS-485 (4-wire) or RS-422 (2-wire) |
| Interface Connectors | 2 x plug-in terminal blocks (RS422/485) |
| Isolation Protection | 3500 V _{DC} |
| Speed Modes (bps) | 1,200, 2,400, 4,800, 9,600, 19.2 k, 38.4 k, 57.6 k, 115.2 k, |
| EEPROM | 32KB |
| Power Requirement | 3.3V & 5V DC |
| Operating temperature | -40 to 85° C |
| Storage Temperature | -40 ~ 85° C |
| Operating Humidity | 5 ~ 95% RH |

Ordering Information

| P/N | Description |
|-------------------|---|
| WISE-1251W0-0000E | RS422/485 I/O node board |
| WISE-1021WR-1100E | WSN IP Node, IEEE.802.15.4e Linear/Dust Mesh network with TI MSP430 MCU WISE-DB1021 |

WISE-1252

4-ch Relay and DIO I/O Board



CE FCC 

Specifications

| | |
|----------------------------|--|
| Relay output | 4ch |
| Contact Rating (Resistive) | 250V _{AC} @ 0.3A, 30V _{DC} @ 2A |
| Isolation Protection | 3500 V _{DC} |
| Initial Insulation | 1 G Ω min. at 500 V _{DC} Resistance Relay off Time 2 ms (Typical) |
| Relay on Time | 3 ms (Typical) |
| Maximum Operating Speed | 20 operations/min (at related load) |
| Digital input | 4-ch |
| EEPROM | 32KB |
| Power Requirement | 3.3V & 5V DC |
| Operating temperature | -40 to 85° C |
| Storage Temperature | -40 ~ 85° C |
| Operating Humidity | 5 ~ 95% RH |

Ordering Information

| P/N | Description |
|-------------------|---|
| WISE-1252W0-0000E | 4-ch Relay and 4-ch DIO I/O node board |
| WISE-1021WR-1100E | WSN IP Node, IEEE.802.15.4e Linear/Dust Mesh network with TI MSP430 MCU WISE-DB1021 |

X-ON Electronics

Largest Supplier of Electrical and Electronic Components

Click to view similar products for [Interface Modules](#) category:

Click to view products by [Advantech](#) manufacturer:

Other Similar products are found below :

[IFD8520](#) [cPCI-3544](#) [422CON](#) [ATX6022/14GP7](#) [ATX6022/8](#) [AX93221-24/48](#) [FC6A-EXM2](#) [OPT8AP-AE](#) [96RMKVM-19V1C-A](#) [60016-011](#) [60016-014](#) [60006-008](#) [60011-075](#) [HPCI-14S12U](#) [cBP-3208](#) [cBP-3062A](#) [FAB205-6P5](#) [ATX6022/6](#) [60016-012](#) [96RMKVM-17V1C-A](#) [PCE-DP10-00A1E](#) [MOS-1120Y-0201E](#) [96RMLCD-17V1-A](#) [96RMKVM-17V8C-A](#) [60004-005](#) [60016-017](#) [60006-009](#) [60016-035](#) [60016-034](#) [60016-031](#) [60016-030](#) [60016-026](#) [60016-024](#) [60016-018](#) [60016-007](#) [60016-005](#) [60007-002](#) [60006-010](#) [AXX10GBTWLHW3](#) [382-BBEH](#) [555-BDCL](#) [K6CMISZBI52](#) [426451401-3](#) [60011-093](#) [MIC-3620/3-BE](#) [MPCIE-UART-KIT02-R20](#) [RSM232](#) [PCIE-1680-AE](#) [BB-FOSTCDRI](#) [73-544-002](#)