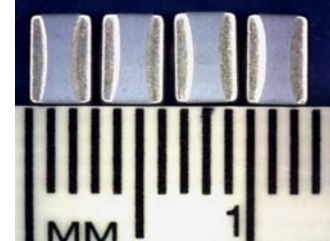
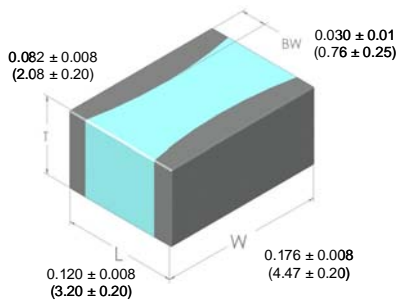


SolidMatrix™ 1218 Series High Current Surface Mount Fuses

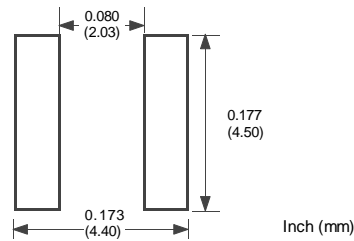
Features:

- Glass ceramic monolithic structure
- Silver fusing element and silver end metallization with nickel and Sn/Pb plating
- Low DC resistance (low power dissipation)
- Symmetrical design with marking on both sides (optional)
- Operating temperature: -55°C to +125 °C

Shape and Dimensions:



Recommended Land Pattern:



Electrical Characteristics:

% of current rating	Clear-time at 25 °C
100%	4 hours min. (Fuse body temperature < 125 °C)
300%	0.005-1.0 seconds (0.010-5.0 seconds for 4.0 amp rating)
600%	0.0005-0.003 seconds
1000%	0.0001-0.001 seconds
Interrupting rating	300A at rated voltage

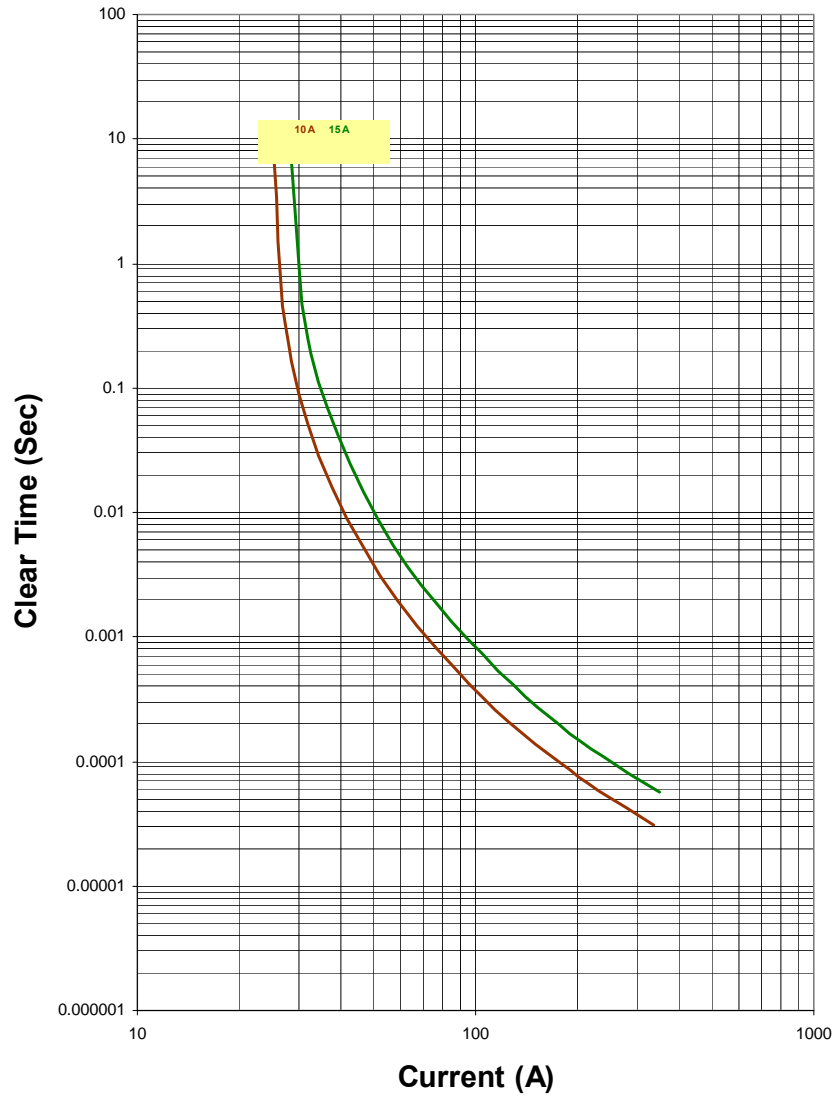
Marking Code (Optional): 4.0A: M, 10.0A: Q, 15.0A: Y, 20.0A: Z

Ordering Information:

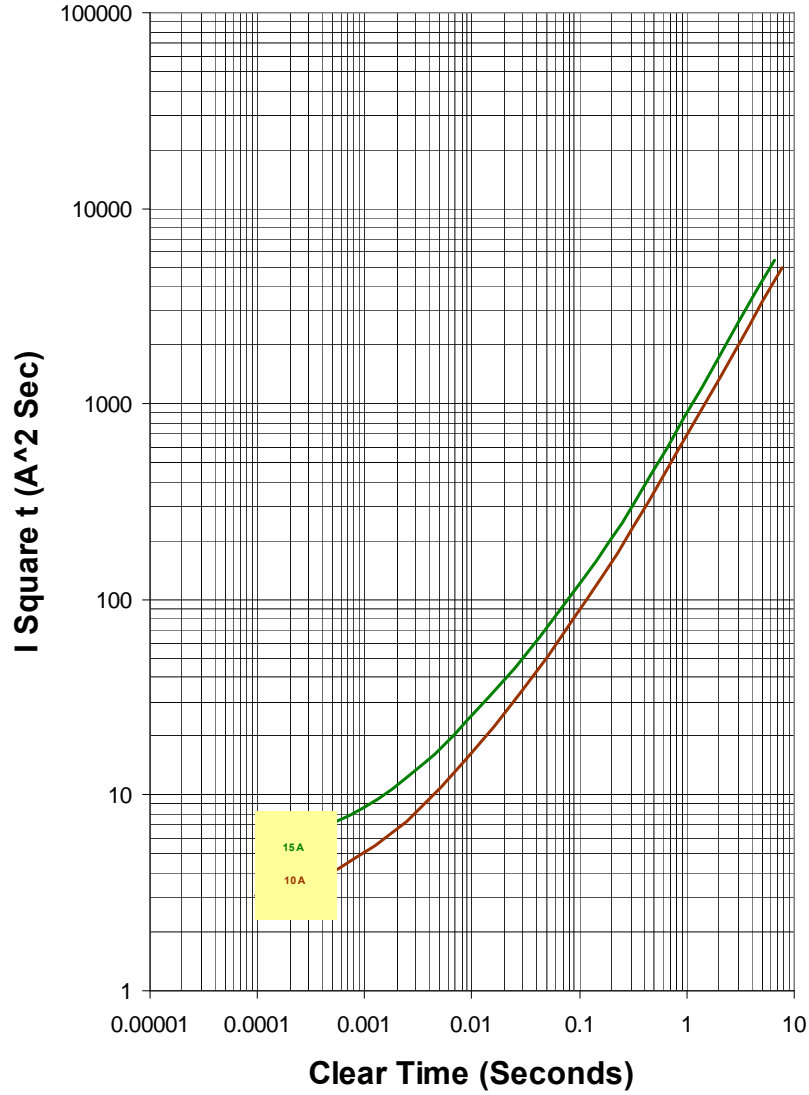
Part Number	Current Rating(A)	Voltage Rating (VDC)	Nominal Cold DCR (Ω) ^a
F1218HR040V048T	4.0	48	0.025
F1218HR100V048T	10.0	48	0.009
F1218HR150V048T	15.0	48	0.006
F1218HR200V048T	20.0	48	0.0035

a. Measured at = 10% of rated current and 25°C ambient

**Average Clear Time
 AEM F1218HR Series Chip Fuse**



I Square t vs. Clear Time
 F1218HR Series



X-ON Electronics

Largest Supplier of Electrical and Electronic Components

Click to view similar products for [Surface Mount Fuses](#) category:

Click to view products by [AEM](#) manufacturer:

Other Similar products are found below :

[FHC20402ADTP](#) [NFVC6125S0R50TRF](#) [SFT-125MA](#) [TF16SN2.00TTD](#) [TF16SN3.15TTD](#) [TR/3216LR-500MA](#) [CCP2B20TTE](#)
[FCC16501ABTP](#) [FHC16322ADTP](#) [0308.250UR](#) [0308.375UR](#) [0308.500UR](#) [030801.5UR](#) [FCC16202ABTP](#) [03081.25UR](#) [F0603G0R03FNTR](#)
[SKY87604-11](#) [3404.0110.22](#) [SEF 0.375A 125V \(G\)](#) [1211015](#) [S1206-F-3.0A](#) [9321315278](#) [S0603-F-4.0A](#) [SMT1315AP](#) [0603TD-4A](#)
[1240FH-30A](#) [R451003.L](#) [R451.500L](#) [R451001.L](#) [3-103-119](#) [3-103-123](#) [3-103-127](#) [0154002.DRL](#) [0154008.DRL](#) [0154.500DRL](#) [189140.1,25](#)
[189140.0,8](#) [189140.0,4](#) [189140.0,63](#) [189140.0,25](#) [0468003.WR](#) [0494001.NRHF](#) [0494002.NRHF](#) [0494003.NRHF](#) [049402.5NRHF](#)
[049403.5NRHF](#) [0494.250NRHF](#) [0494.375NRHF](#) [0494.500NRHF](#) [CF06V3T1R60](#)