

DC BLOCKS

2.9mm

7 kHz - 26.5 GHz

INNER ONLY



MODELS: 8060A, 8063A & 8066A

SPECIFICATIONS:

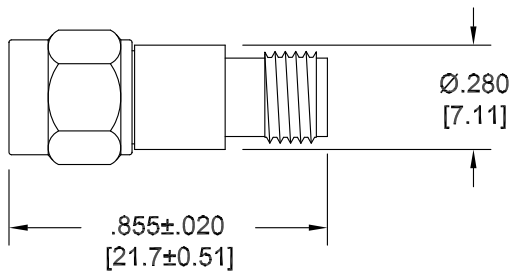
Electrical:

Frequency Range and Typ. -3 dB Bandwidth ____ 7 kHz - 26.5 GHz
 VSWR:
 250 kHz - 18 GHz _____ 1.35:1 Max.
 18 GHz - 26.5 GHz _____ 1.50:1 Max.
 Typ. Risetime _____ <9 picoSeconds
 Capacitance Nominal _____ 100 nanoFarads
 Impedance _____ 50 Ohms
 Insertion Loss:
 250 kHz - 18 GHz _____ 0.5 dB Max.
 18 GHz - 26.5 GHz _____ 0.75 dB Max.
 Voltage Rating _____ 75 Volts Max.
 Operating Temp. Range _____ -35°C to +85°C

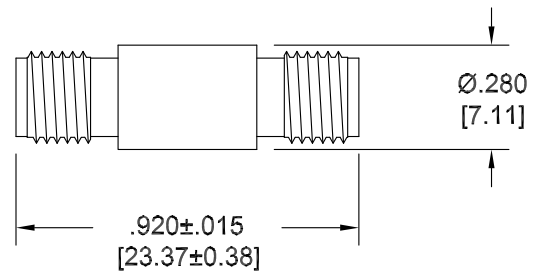
Mechanical:

2.9mm Connectors _____ Passivated Stainless Steel
(Mate both Mechanically & Electrically with all SMA, SMK, K*, 2.92 mm & 3.5mm Series Connectors.)
 Conductors _____ Gold Plated Beryllium Copper
 Housings _____ Passivated Stainless Steel

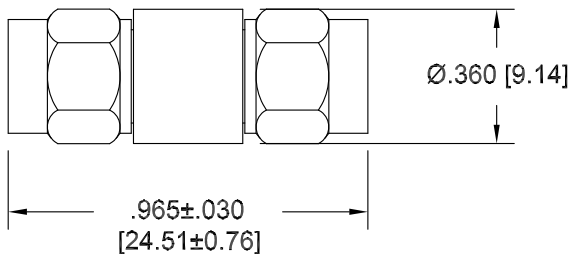
Model Number: **8060A**
 2.9mm Male / Female



Model Number: **8063A**
 2.9mm Female / Female



Model Number: **8066A**
 2.9mm Male / Male



Note: Dimensions in Brackets are Expressed in Millimeters and are for Reference Only.
 Design specifications are subject to change without notice.
 Contact factory for technical specifications before purchasing or use.

X-ON Electronics

Largest Supplier of Electrical and Electronic Components

Click to view similar products for [Test Accessories - Other](#) category:

Click to view products by [Aeroflex](#) manufacturer:

Other Similar products are found below :

[AO1026](#) [AO1035](#) [AO1051](#) [AO1059](#) [149118](#) [C20](#) [RS40](#) [RS41](#) [AO1030](#) [AO1032](#) [AO1036](#) [AO1058](#) [4742](#) [KTS288540](#) [00415](#) [00163](#)
[046450](#) [GPR10](#) [ADPTR-HDV](#) [VS-AVT-C02-L03](#) [VS-AVT-CABLE-04](#) [VS-AVT-CABLE-16](#) [VS-AVT-CABLE-20](#) [VS-AVT-CABLE-30](#)
[VS-CKP14-6](#) [VS-CKP4-000](#) [VS-AVT2-C02L03](#) [VS-AVT2-C08L10](#) [CKSB1-00](#) [CKSB6-2](#) [CKSB10-8](#) [GP73800080](#) [MPT-VF](#) [98-CAL020](#)
[LSP08-RTS](#) [1-1437358-1](#) [4408 POMONA](#) [AX-904](#) [DME D110 T1](#) [LMLH 50](#) [1508-POM](#) [00836](#) [85392-12](#) [207P18.2222.F](#) [CR-31](#) [7708](#)
[ST18/SMAM/SMAM/72](#) [CT2299](#) [C700](#) [34192A](#)